

# NOW LEASING

# AXIS REALTY

**12,500 SF Divisible (to 1,500 SF) Out-Lot Building - To Be Constructed**

**16300 S Harlem Ave @ 163rd, Tinley Park - Hard Signalized Corner**

**Adjacent to Sam's Club**



**Join Newly Constructed  
Pete's Fresh Market  
and Chic Fil A**

## Highlights

- > Depth of only 60'
- > Anchored by newly constructed Pete's Fresh Market and newly constructed Chic Fil A
- > Hard corner with traffic signal
- > 29,795 VPD along Harlem and 35,145 VPD along 159th St., just north of the subject
- > Excellent access & visibility



## Demographics

|                   | 1 mile   | 2 miles   | 5 miles   |
|-------------------|----------|-----------|-----------|
| Population        | 13,488   | 93,308    | 197,497   |
| Average HH Income | \$97,043 | \$104,827 | \$104,994 |
| Households        | 5,401    | 36,553    | 76,227    |

Dino Geroulis • [dino@axis-realty.com](mailto:dino@axis-realty.com) • 773.594.1602  
John Roberson • [john@axis-realty.com](mailto:john@axis-realty.com) • 312.925.7701

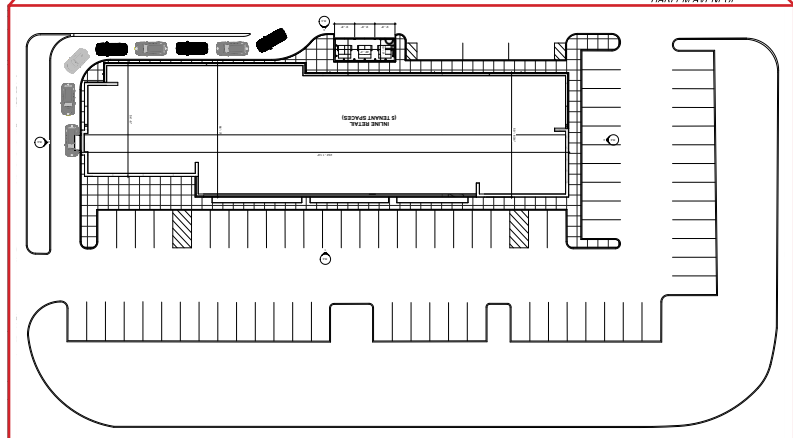
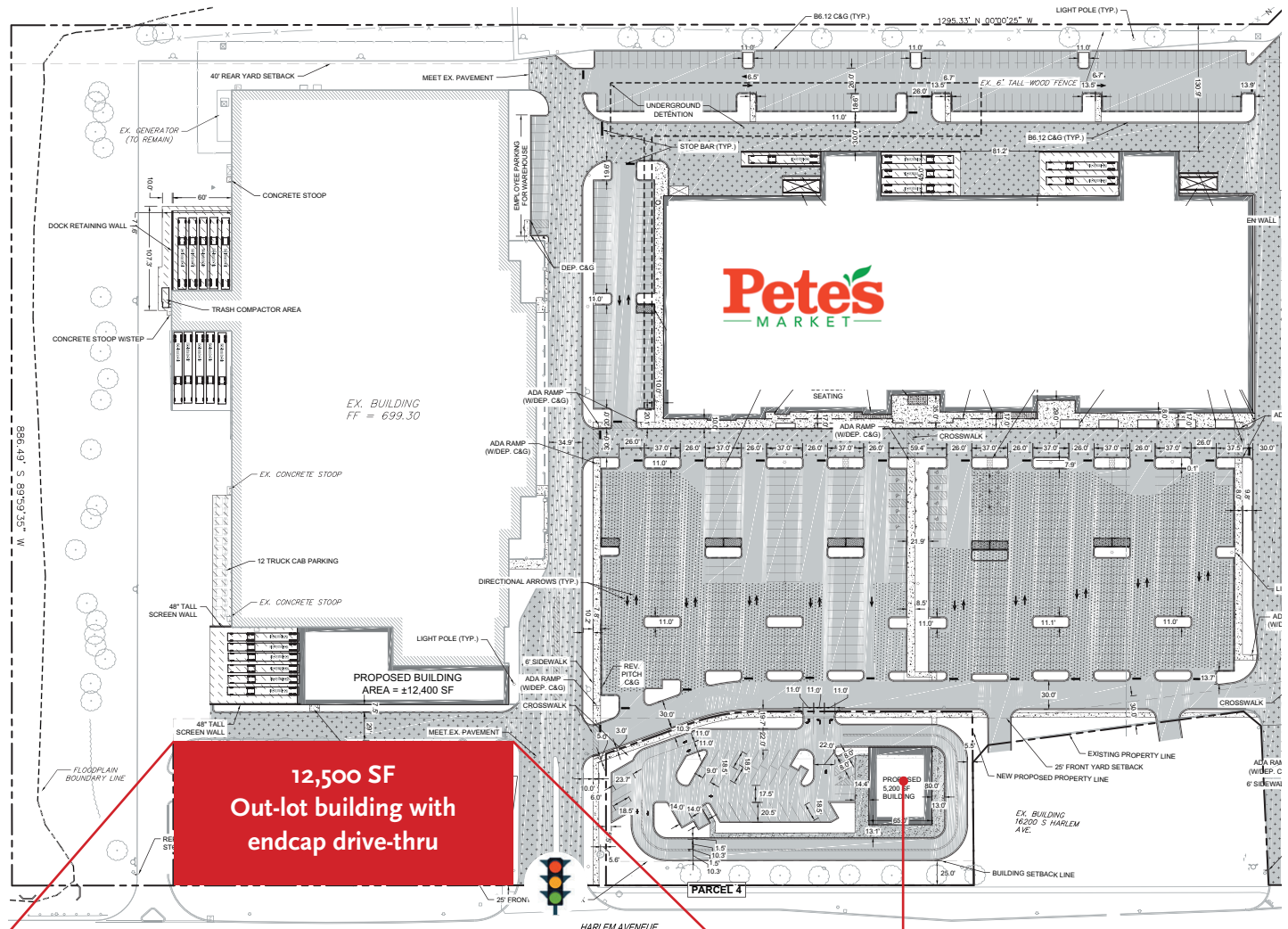
# NOW LEASING

# AXIS REALTY

## 12,500 SF Divisible (to 1,500 SF) Out-Lot Building - To Be Constructed

16300 S Harlem Ave @ 163rd, Tinley Park - Hard Signalized Corner

Adjacent to Sam's Club



Dino Geroulis • dino@axis-realty.com • 773.594.1602  
John Roberson • john@axis-realty.com • 312.925.7701



# NOW LEASING

AXIS  REALTY

## 12,500 SF Divisible (to 1,500 SF) Out-Lot Building - To Be Constructed

16300 S Harlem Ave @ 163rd, Tinley Park - Hard Signalized Corner

## Adjacent to Sam's Club



Dino Geroulis • [dino@axis-realty.com](mailto:dino@axis-realty.com) • 773.594.1602  
John Roberson • [john@axis-realty.com](mailto:john@axis-realty.com) • 312.925.7701



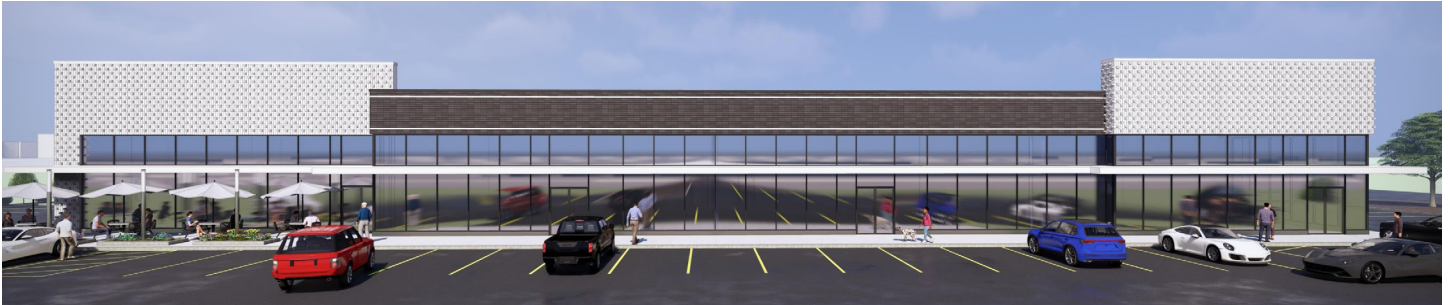
# NOW LEASING

# AXIS REALTY

**12,500 SF Divisible (to 1,500 SF) Out-Lot Building - To Be Constructed**

16300 S Harlem Ave @ 163rd, Tinley Park - Hard Signalized Corner

Adjacent to Sam's Club



Dino Geroulis • [dino@axis-realty.com](mailto:dino@axis-realty.com) • 773.594.1602  
John Roberson • [john@axis-realty.com](mailto:john@axis-realty.com) • 312.925.7701



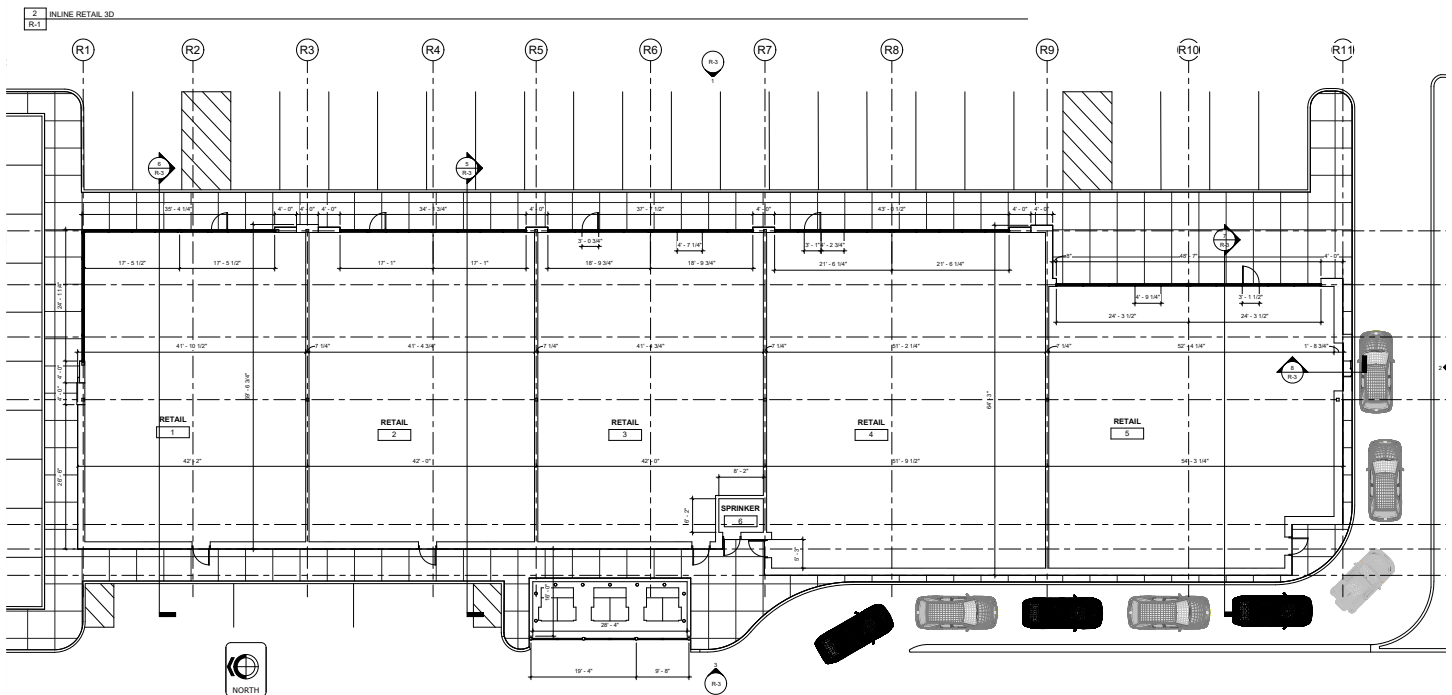
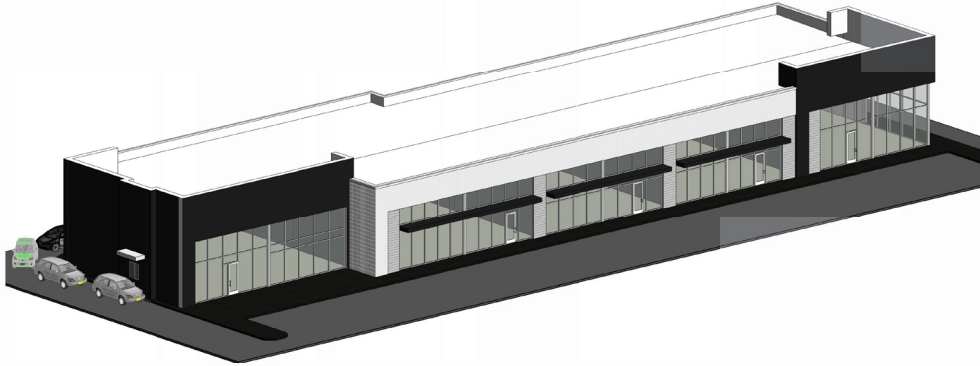
# NOW LEASING

# AXIS REALTY

**12,500 SF Divisible (to 1,500 SF) Out-Lot Building - To Be Constructed**

**16300 S Harlem Ave @ 163rd, Tinley Park - Hard Signalized Corner**

**Adjacent to Sam's Club**



Dino Geroulis • [dino@axis-realty.com](mailto:dino@axis-realty.com) • 773.594.1602  
John Roberson • [john@axis-realty.com](mailto:john@axis-realty.com) • 312.925.7701