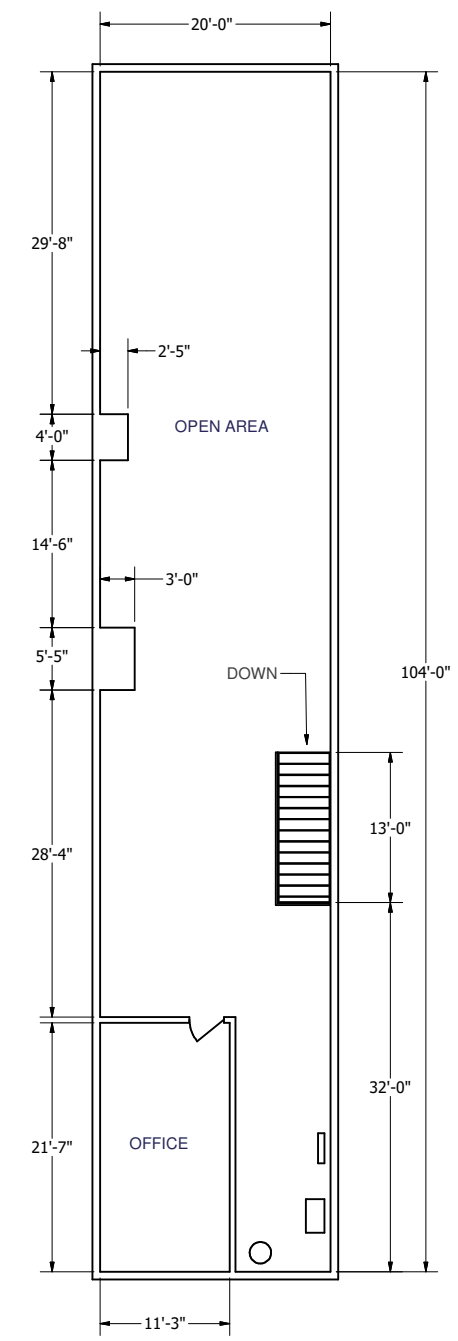


**FIRST FLOOR  
PLAN VIEW**  
APPROX. 7,370 SQ.FT.

**TOTAL FLOOR SPACE**  
APPROX. 9,450 SQ.FT.



**SECOND FLOOR  
PLAN VIEW**  
APPROX. 2,080 SQ.FT.

<b>TENNESSEE DESIGN CO.</b> NASHVILLE, TENNESSEE  <small>THIS DOCUMENT IS CONFIDENTIAL AND THE PROPERTY OF TENNESSEE DESIGN CO. ITS CONTENTS ARE NOT TO BE COPIED OR USED FOR ANY PURPOSE WITHOUT THE WRITTEN APPROVAL OF TENNESSEE DESIGN CO.</small>	<small>TOLERANCE UNLESS SPECIFIED</small> X +/- 1/64 XX +/- .02 XXX +/- .005 XXXX +/- .0005 ANGLE +/- 0' 30" SURFACE FINISH 1/8"		<b>BC WOOD PROPERTIES, INC.</b> LOUISVILLE, KENTUCKY TITLE <b>BUILDING LAYOUT - SPACE NO.12</b>	
	CONFIDENTIAL <small>DESIGNER L. CRESON DATE 3/1/2021</small> <small>CHECKER S. MINER DATE 3/15/2021</small>	<small>PROJECT</small> <b>RIVER OAK SHOPPING CENTER / FAYETTEVILLE, TN</b>	<small>SCALE</small> NTS <small>DESIGN STATE</small> Released	<small>SHEET NO.</small> 1 OF 1 <small>DRAWING NO.</small> E1918-002-001 <small>REV. NO.</small> 01
<small>THIRD ANGLE PROJECTION</small>	<small>APP. BY</small> <small>CLIENT APP.</small>	<small>DATE</small>	<small>MATERIAL</small> SEE NOTES	<small>REV. NO.</small> 01