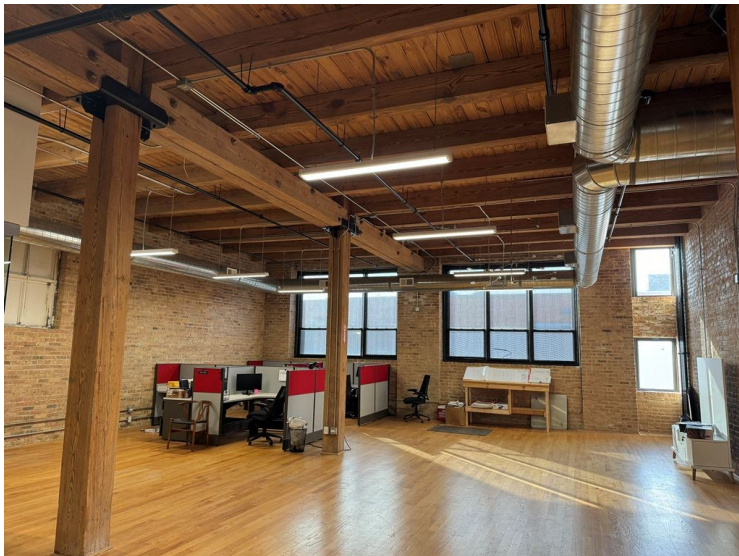


FOR LEASE IN KINZIE CORRIDOR/WEST FULTON MARKET 5,000-9,929 SF LOFT OFFICE AVAILABLE



Stunning loft office with 5,000 SF to 9,929 SF available. Situated on the first floor of a beautifully renovated two-story building, this great workspace boasts exposed brick walls and soaring 14-foot ceilings, creating a comfortable environment filled with natural light from tall windows. Designed for flexibility, the open floor plan is perfect for tech companies, R&D, or any creative office needs. You'll enjoy modern amenities, including hardwood floors, a fully equipped kitchen, ADA-compliant entry, and convenient elevator access. Plus, benefit from 3-5 dedicated outdoor parking spots, with additional overflow options available. Less than 1 mile west of the bustling Fulton Market District, you'll have access to an array of dining and entertainment options. Commuting is an option with the Ashland Green/Pink Line only 0.3 miles away. Elevate your workspace and thrive in the heart of Chicago's Kinzie Corridor!

Size: 5,000 SF —
9,929 SF

Lease Price: \$24 PSF

Rental Type: Modified
Gross

Zoning: PMD-4

LOCATION HIGHLIGHTS:

- Kinzie Corridor TIF District
- 0.3 miles to CTA Green/Pink Line
- 0.5 miles to United Center
- 0.8 miles to Fulton Market District
- 1.0 miles to I-290
- 1.1 miles to Kennedy Expressway



CRAIG WOLF
847-989-9653
CRAIG@STRAUSSREALTY.COM

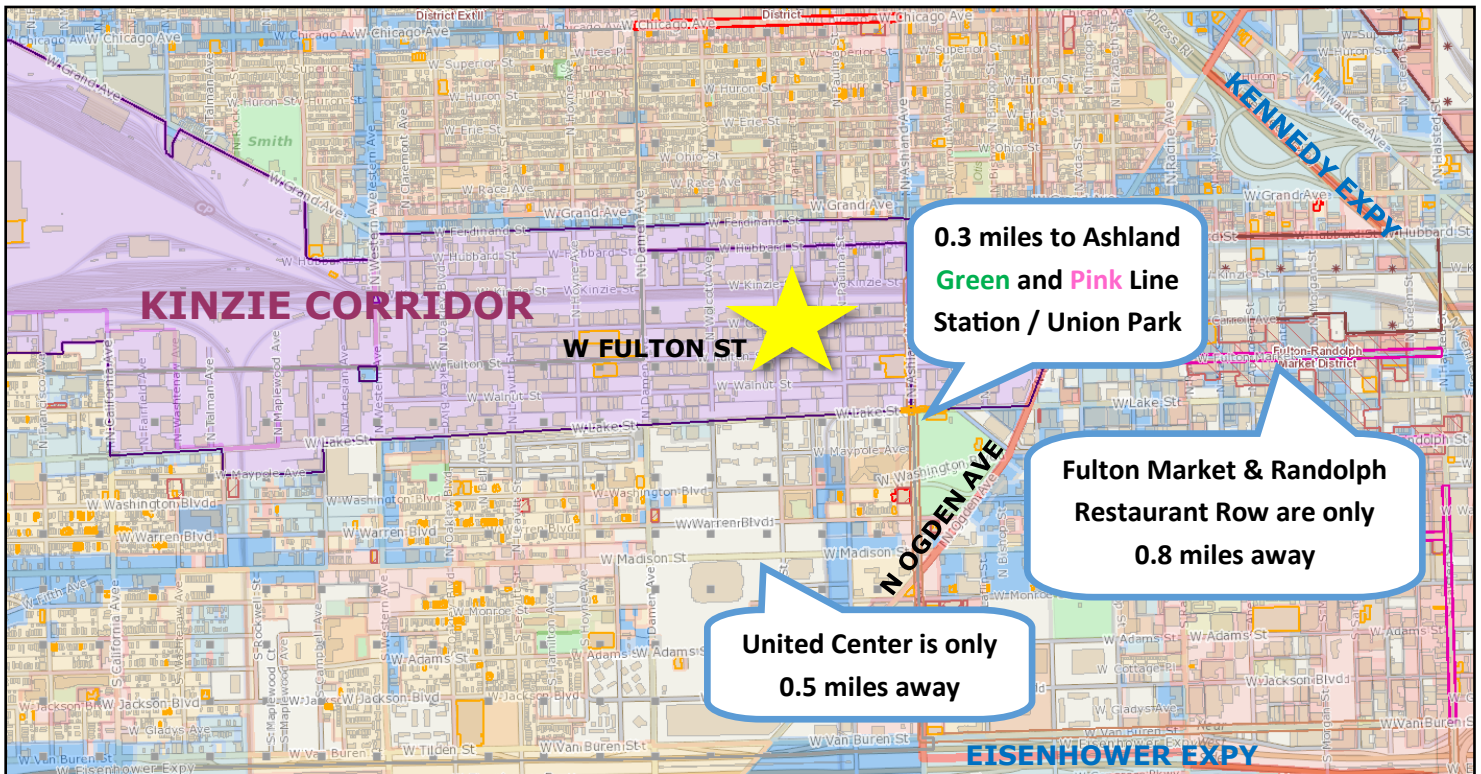
STRAUSS REALTY, LTD.
4220 W. MONTROSE AVENUE
CHICAGO, ILLINOIS 60641
PHONE: 773-736-3600

STRAUSS

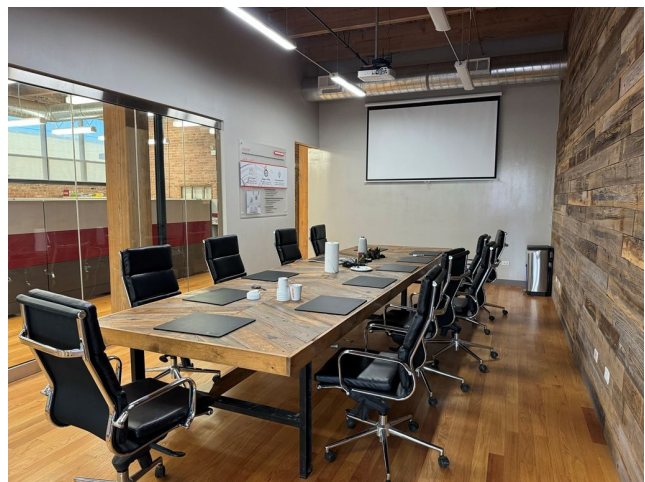
REALTY, LTD.

1750 W. FULTON ST.
CHICAGO, ILLINOIS 60612

MAP



INTERIOR



CRAIG WOLF
847-989-9653
CRAIG@STRAUSSREALTY.COM

STRAUSS REALTY, LTD.
4220 W. MONTROSE AVENUE
CHICAGO, ILLINOIS 60641
PHONE: 773-736-3600

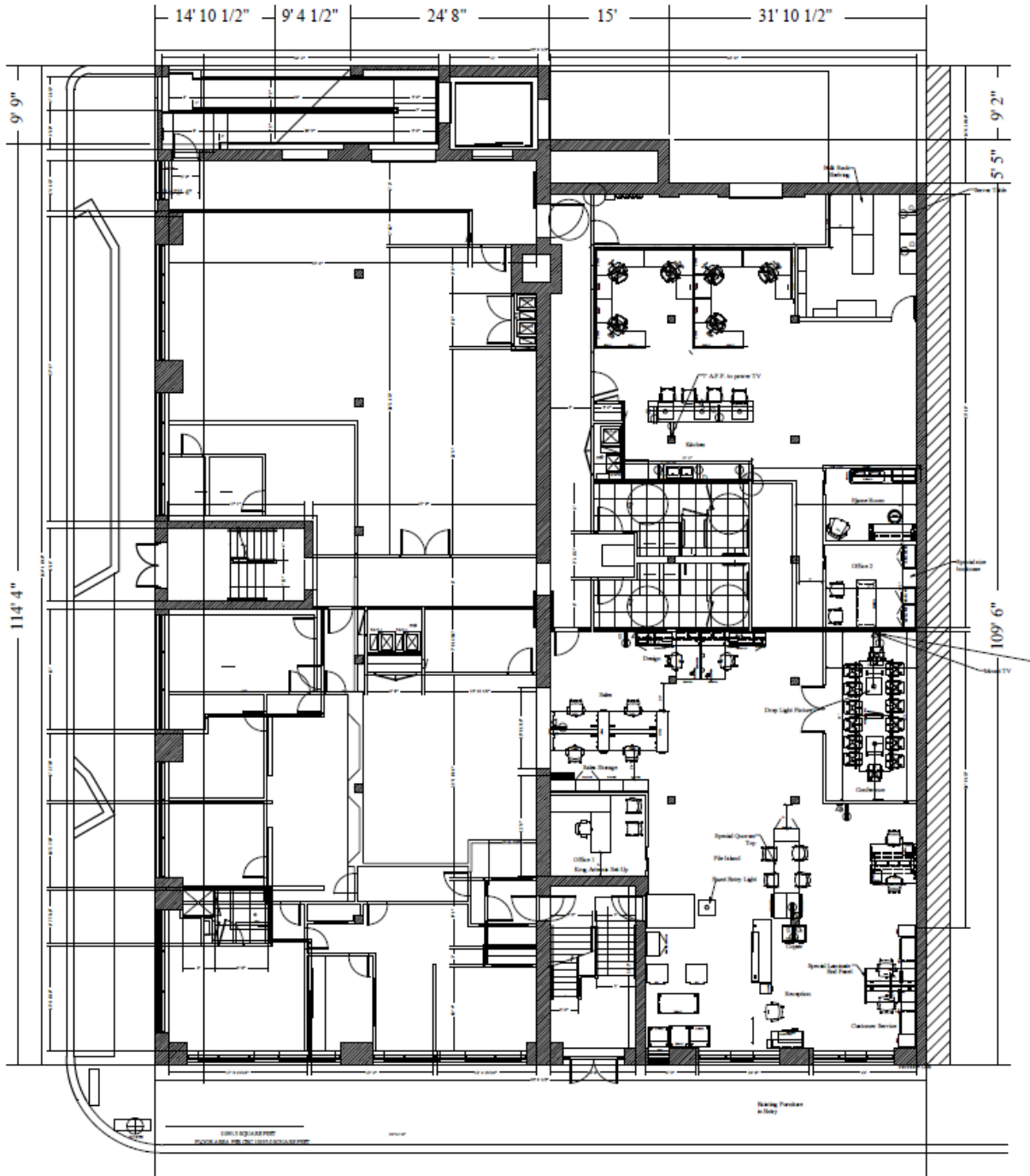
INTERIOR



CRAIG WOLF
847-989-9653
CRAIG@STRAUSSREALTY.COM

STRAUSS REALTY, LTD.
4220 W. MONTROSE AVENUE
CHICAGO, ILLINOIS 60641
PHONE: 773-736-3600

LAYOUT



CRAIG WOLF
847-989-9653
CRAIG@STRAUSSREALTY.COM

STRAUSS REALTY, LTD.
4220 W. MONTROSE AVENUE
CHICAGO, ILLINOIS 60641
PHONE: 773-736-3600