

43,143 SF AVAILABLE

# 12012

**NW 27th Place**

Miami, FL 33167



**INDUSTRIAL  
& MULTIFAMILY**

**FOR SALE &  
FOR LEASE**

# AVAILABLE FOR SALE OR LEASE

**43,143**  
Available SF

**±1.0**  
Acres

**UC-MC**  
Zoning

Property Size SF	43,143 SF
Land AC	±1 Acre
Occupancy	Immediately
Zoning	UC-MC
Submarket	North Central Dade
Improvements	Miling, fenced, electrical onsite, potential to put mobile office
Lease Rate	\$19,800/month Gross
Sale Price	\$3,850,000



**\*Fully entitled permit set for mixed-use building.**



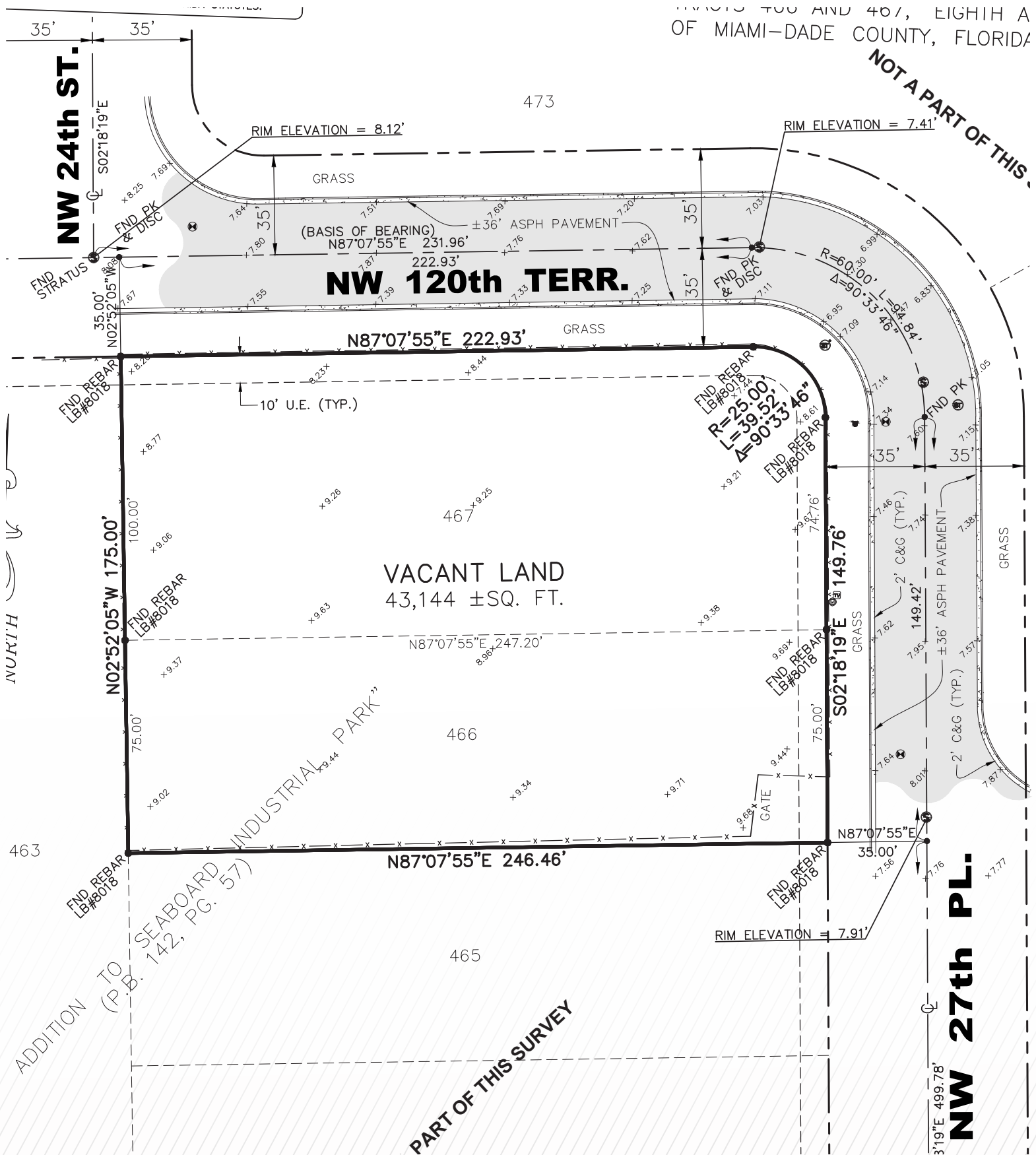
# PROPERTY PHOTOS



\*PROPOSED MIXED-USE RENDING



# SITE SURVEY

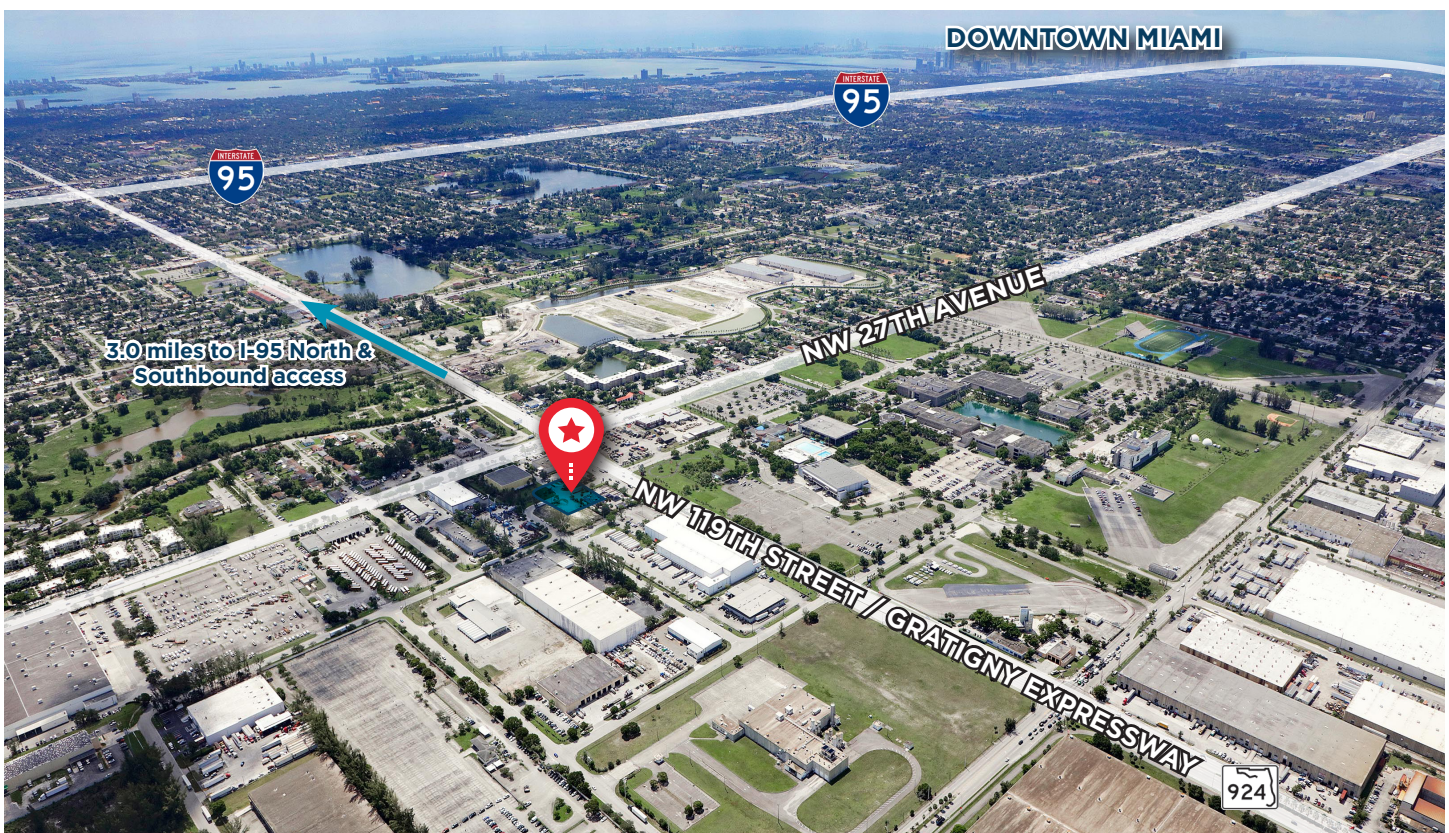




# LOCATION HIGHLIGHTS

Strategically located in NW Miami-Dade with immediate access to major arterial roads including NW 27th Ave, Opa-locka Blvd, and the Palmetto Expressway (SR-826), providing efficient connectivity throughout the Miami metro

Proximity to key logistics and labor hubs, with easy access to Miami International Airport, PortMiami, and surrounding industrial submarkets, making the site ideal for distribution, service, or light industrial users



## CONTACT



**NICOLAS PALAZZO**  
Managing Director  
+1 812 327 7088  
[nico.palazzo@cushwake.com](mailto:nico.palazzo@cushwake.com)



**ANDREW FERNANDEZ**  
Managing Director  
+1 305 467 1449  
[andrew.fernandez@cushwake.com](mailto:andrew.fernandez@cushwake.com)



**SKYLAR STEIN**  
Executive Director  
+1 859 801 5557  
[skylar.stein@cushwake.com](mailto:skylar.stein@cushwake.com)

©2024 Cushman & Wakefield. All rights reserved. The information contained in this communication is strictly confidential. This information has been obtained from sources believed to be reliable but has not been verified. NO WARRANTY OR REPRESENTATION, EXPRESS OR IMPLIED, IS MADE AS TO THE CONDITION OF THE PROPERTY (OR PROPERTIES) REFERENCED HEREIN OR AS TO THE ACCURACY OR COMPLETENESS OF THE INFORMATION CONTAINED HEREIN, AND SAME IS SUBMITTED SUBJECT TO ERRORS, OMISSIONS, CHANGE OF PRICE, RENTAL OR OTHER CONDITIONS, WITHDRAWAL WITHOUT NOTICE, AND TO ANY SPECIAL LISTING CONDITIONS IMPOSED BY THE PROPERTY OWNER(S). ANY PROJECTIONS, OPINIONS OR ESTIMATES ARE SUBJECT TO UNCERTAINTY AND DO NOT SIGNIFY CURRENT OR FUTURE PROPERTY PERFORMANCE.

