



# AVAILABLE FOR SALE + LEASE



1320 East Lomita Blvd  
Wilmington, CA 90744

## PROPERTY HIGHLIGHTS

- **LAND:** ±57,898 SF (± 1.33 Acres)
- **BUILDING:** ± 2,225 SF ( ± 1,000 SF office / ± 1,225 SF maintenance)
- **POWER:** 200 AMP, 208/480 Volts, 3 Phase, 4 Wire
- **UTILITIES:** Electricity, Water, Sewer
- **YARD:** Fenced, Concreted Paved
- **ZONING (SIMPLIFIED):** M3
- **ZONING (COMPLETE):** [Q]M3-1VL-CUGU
- **APN:** 7426-006-015
- **LOCATION:** Quick Access to 110/710/405 Freeways
- **LOCATION:** Close Proximity to World Ports of Long Beach and Los Angeles

ASKING SALE PRICE:  
\$205 PLSF

ASKING LEASE RATE:  
2025: \$0.40 PLSF Gross  
2026: \$0.60 PLSF Gross

### Contact us:

#### Lary Carlton

Senior Vice President  
Lic. No. 1222308  
+1 562 547 8994  
lary.carlton@colliers.com

#### Kyle Degener

Senior Vice President  
Lic. No. 01950430  
+1 310 321 1805  
kyle.degener@colliers.com

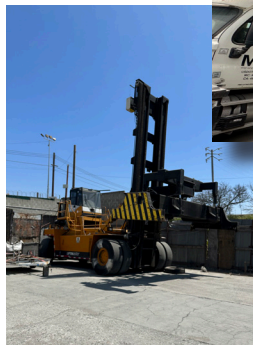
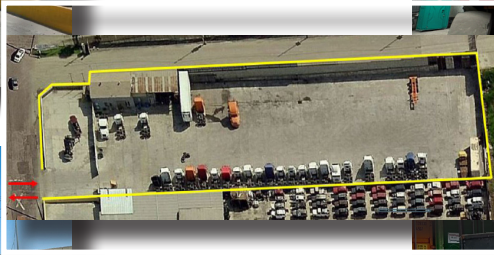
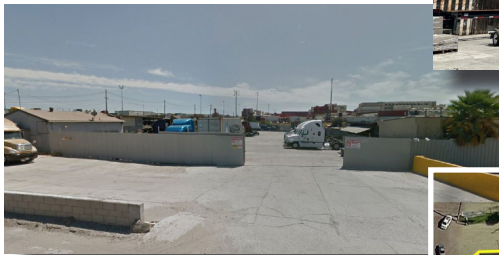
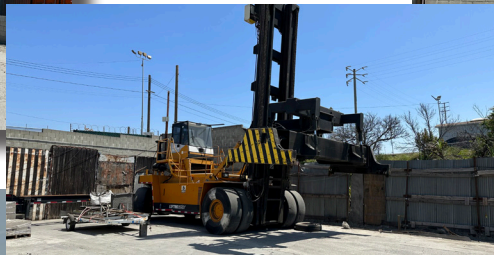
#### Amanda DePierro

Senior Associate  
Lic. No. 02111366  
+1 310 321 1817  
amanda.depierro@colliers.com

**Colliers**

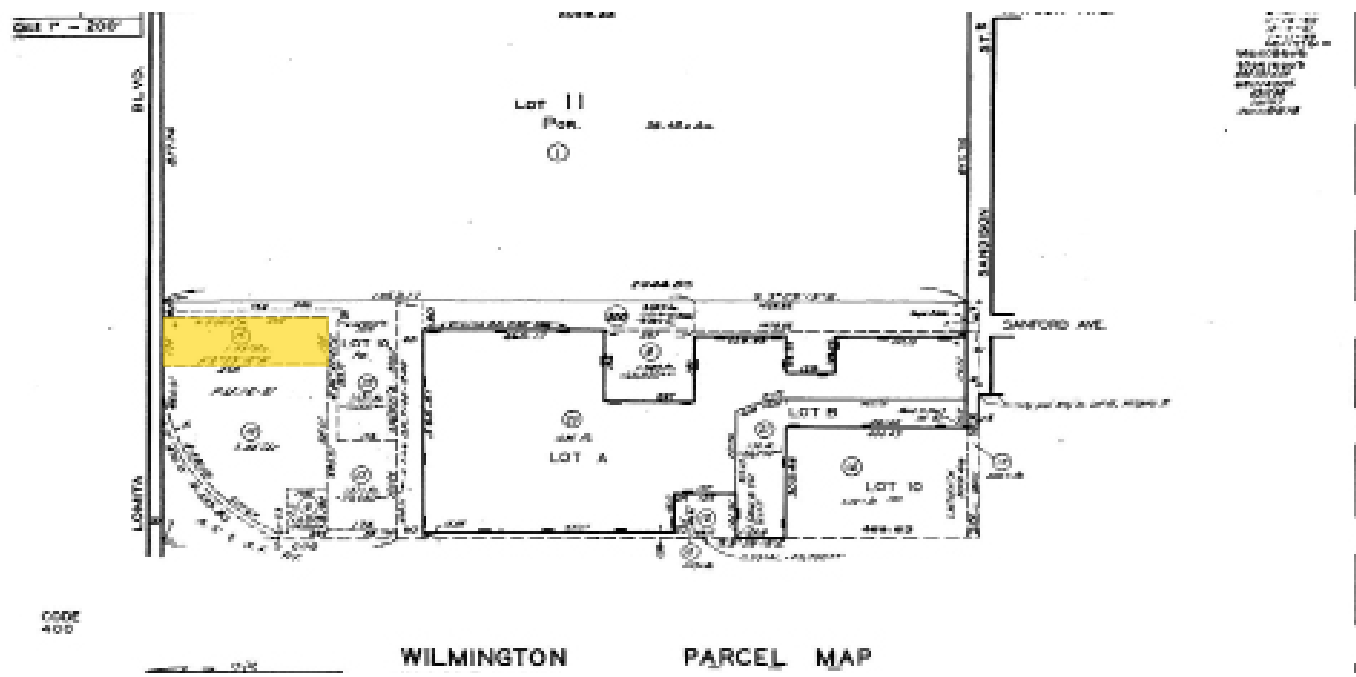
2141 Rosecrans Ave, Suite 1120  
El Segundo, CA 90245  
colliers.com

# PHOTOS

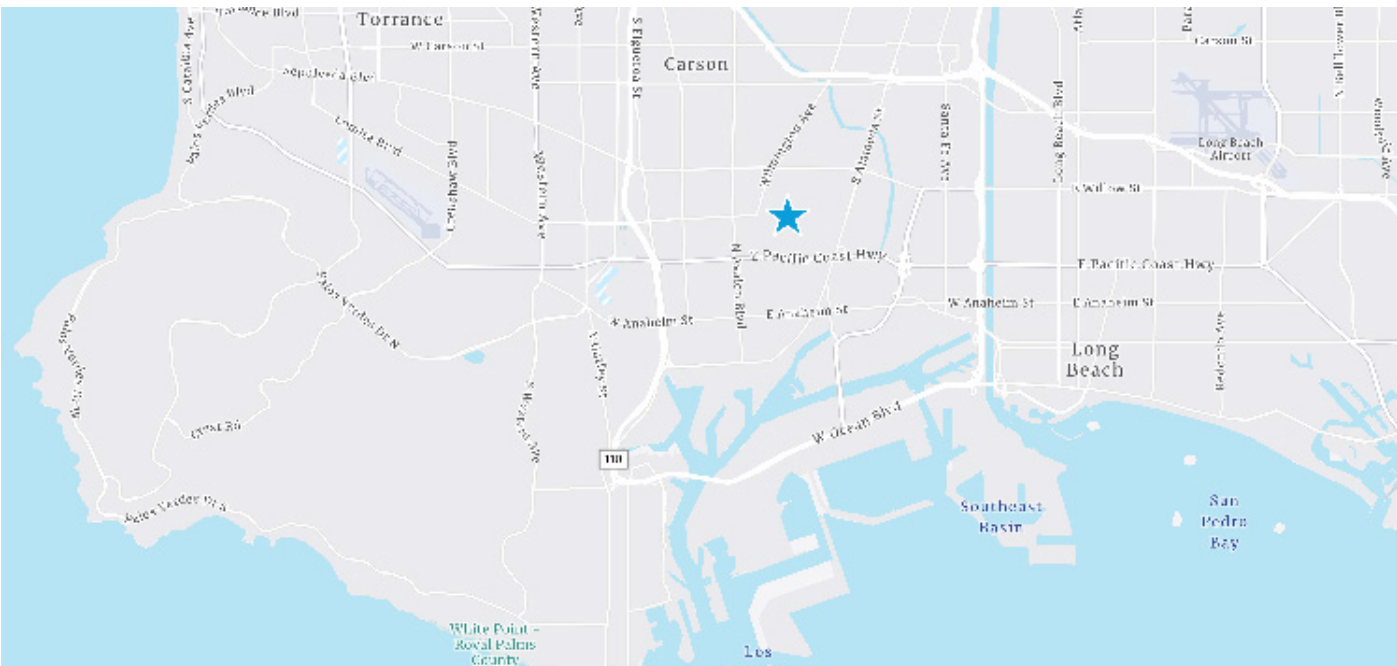




# PARCEL MAP



# ROAD MAP



Colliers International makes no guarantees, representations or warranties of any kind, expressed or implied, regarding the information including, but not limited to, warranties of content, accuracy and reliability. This publication is the copyrighted property of Colliers International and /or its licensor(s). 2025. All rights reserved.