

The Exchange

130 N BRAND BOULEVARD, GLENDALE, CA 91203

FOR LEASE



Prime office location within the hub
of Glendale's Central Business
District

For More Information

John Martin

Senior Vice President

O: 626 204 1503

jmartin@naicapital.com | CalDRE #01280892

NAICapital
COMMERCIAL REAL ESTATE SERVICES, WORLDWIDE

No warranty, express or implied, is made as to the accuracy of the information contained herein. This information is submitted subject to errors, omissions, change of price, rental or other conditions, withdrawal without notice, and is subject to any special listing conditions imposed by our principals. Cooperating brokers, buyers, tenants and other parties who receive this document should not rely on it, but should use it as a starting point of analysis, and should independently confirm the accuracy of the information contained herein through a due diligence review of the books, records, files and documents that constitute reliable sources of the information described herein. Logos are for identification purposes only and may be trademarks of their respective companies. NAI Capital Commercial, Inc. CAL DRE Lic. #02130474

225 S. Lake Avenue, Suite M270
Pasadena, CA 91101
626 564 4800 tel
naicapital.com



OFFICE SPACE FOR LEASE

The Exchange

130 N BRAND BOULEVARD, GLENDALE, CA 91203

Property Highlights

±1,750-5,520 SF office available

COVERED STRUCTURE PARKING
in adjacent city garage, 3/1000
unreserved spaces at prevailing
rates, 90 minutes free for visitors

CREATIVE office suites

WALKING DISTANCE to several
restaurants and amenities

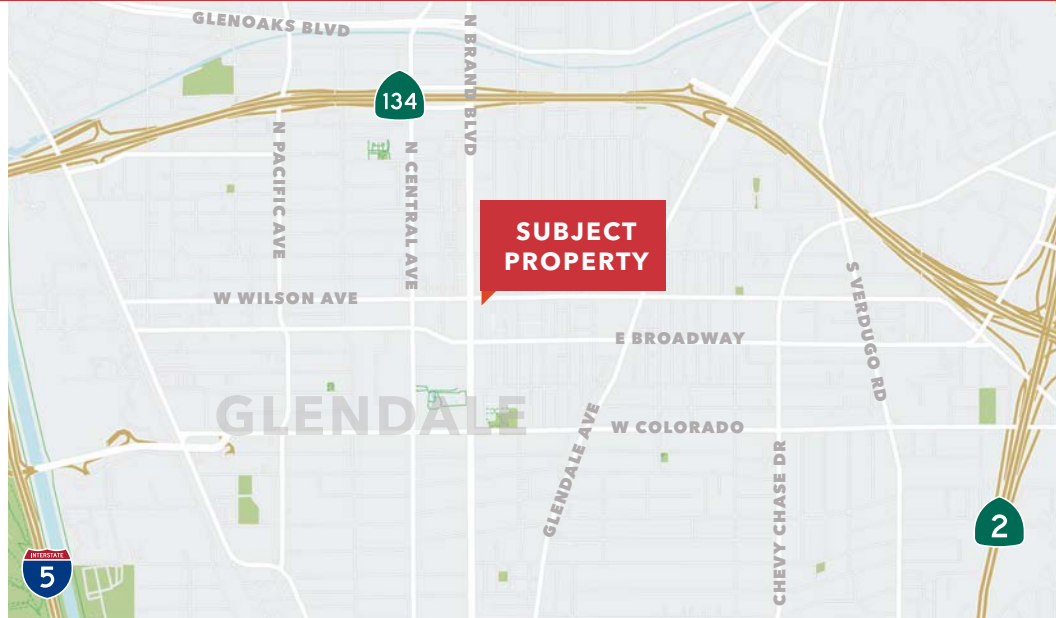
PROFESSIONAL office setting

ONSITE building engineer

EXCELLENT access to 134, 5 and 2
freeways

PROFESSIONALLY managed Office
property

Move-in ready suites



BUILDING AVAILABLE SPACE

| Suite | Type | Rate | Lease | Size | Available |
|-------|--------|--------------|--------------|----------|-------------|
| 200 | Office | \$2.45 SF/Mo | Full Service | 2,434 SF | Immediately |
| 206 | Office | \$2.45 SF/Mo | Full Service | 5,520 SF | Immediately |
| 207 | Office | \$2.45 SF/Mo | Full Service | 1,750 SF | Immediately |
| 310 | Office | \$2.45 SF/Mo | Full Service | 3,518 SF | Immediately |

For More Information

John Martin

Senior Vice President

O: 626 204 1503

jmartin@naicapital.com | CalDRE #01280892



No warranty, express or implied, is made as to the accuracy of the information contained herein. This information is submitted subject to errors, omissions, change of price, rental or other conditions, withdrawal without notice, and is subject to any special listing conditions imposed by our principals. Cooperating brokers, buyers, tenants and other parties who receive this document should not rely on it, but should use it as a starting point of analysis, and should independently confirm the accuracy of the information contained herein through a due diligence review of the books, records, files and documents that constitute reliable sources of the information described herein. Logos are for identification purposes only and may be trademarks of their respective companies. NAI Capital Commercial, Inc. CAL DRE Lic. #02130474

225 S. Lake Avenue,
Suite M270 Pasadena,
CA 91101

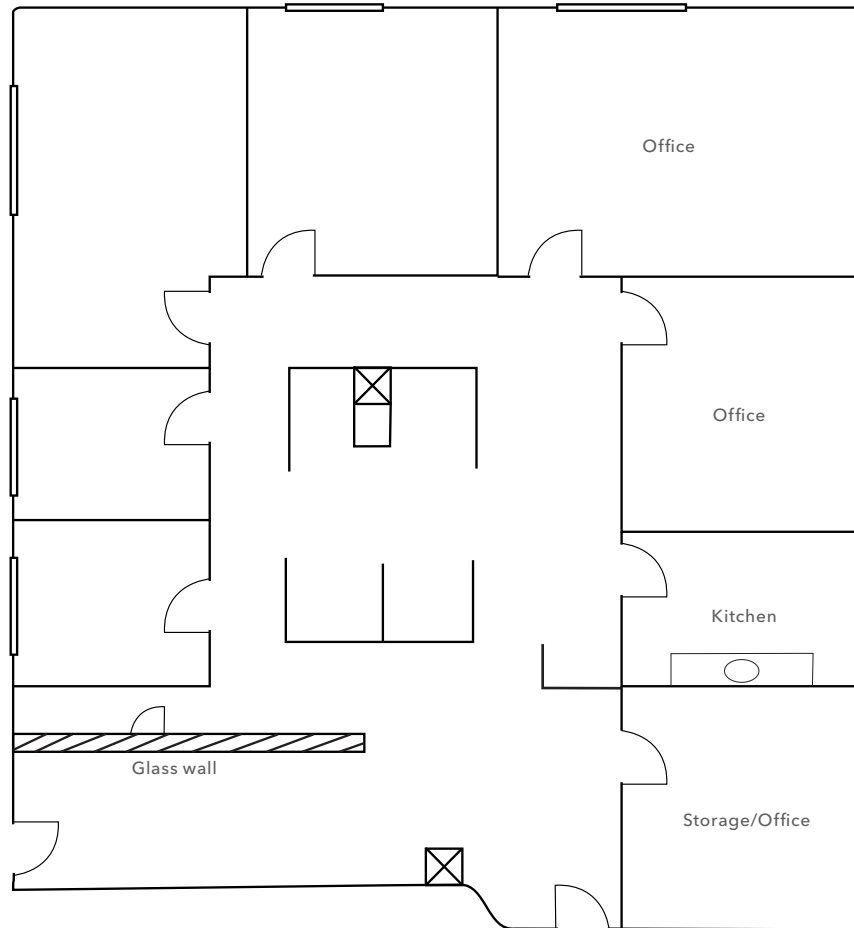
626 564 4800 tel
naicapital.com

OFFICE SPACE FOR LEASE

The Exchange

130 N BRAND BLVD, GLENDALE, CA 91203

Suite 200



OVERVIEW

| Suite | Type | Rate | Lease | Size | Available |
|-------|--------|--------------|--------------|----------|-------------|
| 200 | Office | \$2.45 SF/Mo | Full Service | 2,434 SF | Immediately |

For More Information

John Martin

Senior Vice President

O: 626 204 1503

jmartin@naicapital.com | CalDRE #01280892



No warranty, express or implied, is made as to the accuracy of the information contained herein. This information is submitted subject to errors, omissions, change of price, rental or other conditions, withdrawal without notice, and is subject to any special listing conditions imposed by our principals. Cooperating brokers, buyers, tenants and other parties who receive this document should not rely on it, but should use it as a starting point of analysis, and should independently confirm the accuracy of the information contained herein through a due diligence review of the books, records, files and documents that constitute reliable sources of the information described herein. Logos are for identification purposes only and may be trademarks of their respective companies. NAI Capital Commercial, Inc. CAL DRE Lic. #02130474

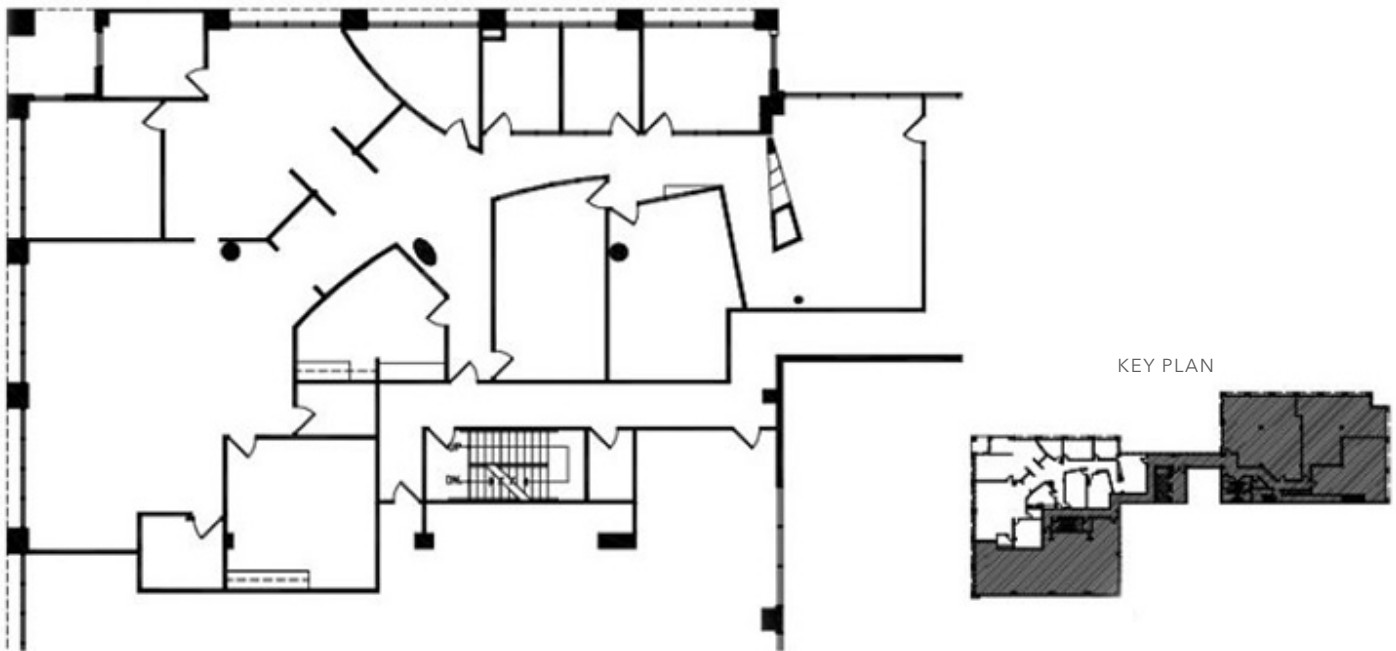
225 S. Lake Avenue, Suite
M270 Pasadena, CA 91101
626 564 4800 tel
naicapital.com

OFFICE SPACE FOR LEASE

The Exchange

130 N BRAND BOULEVARD, GLENDALE, CA 91203

Suite 206



OVERVIEW

| Suite | Type | Rate | Lease | Size | Available |
|-------|--------|--------------|--------------|----------|-------------|
| 206 | Office | \$2.45 SF/Mo | Full Service | 5,520 SF | Immediately |

For More Information

John Martin

Senior Vice President

O: 626 204 1503

jmartin@naicapital.com | CalDRE #01280892



No warranty, express or implied, is made as to the accuracy of the information contained herein. This information is submitted subject to errors, omissions, change of price, rental or other conditions, withdrawal without notice, and is subject to any special listing conditions imposed by our principals. Cooperating brokers, buyers, tenants and other parties who receive this document should not rely on it, but should use it as a starting point of analysis, and should independently confirm the accuracy of the information contained herein through a due diligence review of the books, records, files and documents that constitute reliable sources of the information described herein. Logos are for identification purposes only and may be trademarks of their respective companies. NAI Capital Commercial, Inc. CAL DRE Lic. #02130474

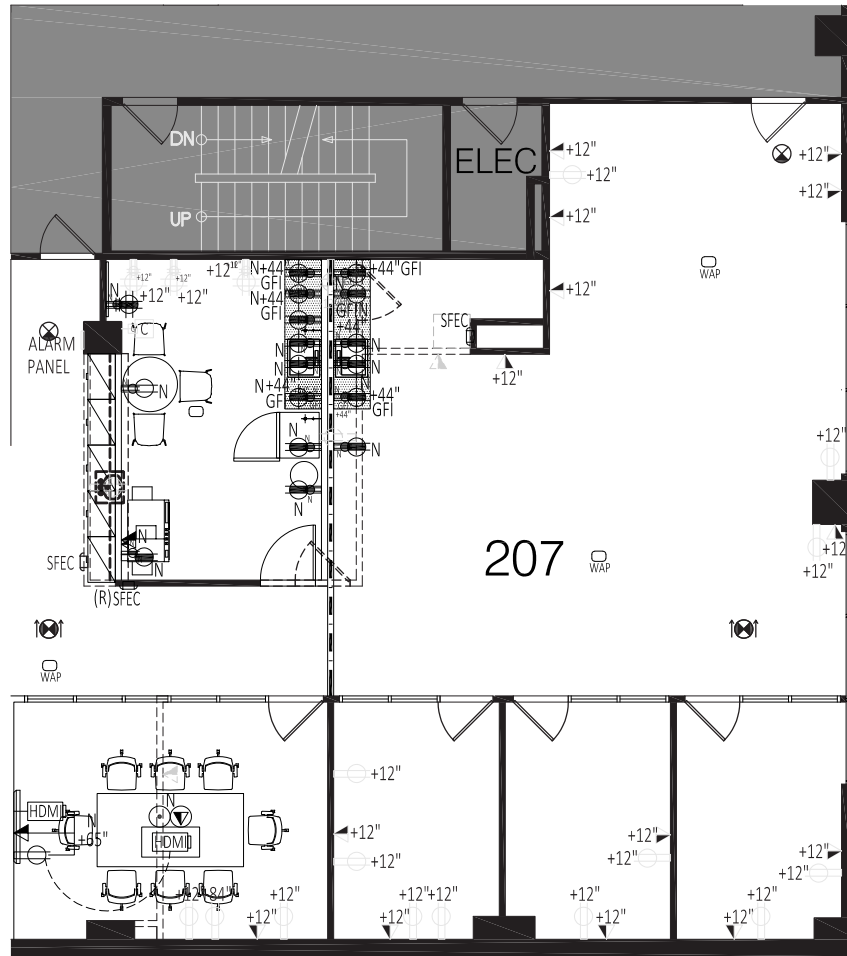
225 S. Lake Avenue, Suite
M270 Pasadena, CA 91101
626 564 4800 tel
naicapital.com

OFFICE SPACE FOR LEASE

The Exchange

130 N BRAND BOULEVARD, GLENDALE, CA 91203

Suite 207



OVERVIEW

| Suite | Type | Rate | Lease | Size | Available |
|-------|--------|--------------|--------------|----------|-------------|
| 207 | Office | \$2.45 SF/Mo | Full Service | 1,750 SF | Immediately |

For More Information

John Martin

Senior Vice President

O: 626 204 1503

jmartin@naicapital.com | CalDRE #01280892



No warranty, express or implied, is made as to the accuracy of the information contained herein. This information is submitted subject to errors, omissions, change of price, rental or other conditions, withdrawal without notice, and is subject to any special listing conditions imposed by our principals. Cooperating brokers, buyers, tenants and other parties who receive this document should not rely on it, but should use it as a starting point of analysis, and should independently confirm the accuracy of the information contained herein through a due diligence review of the books, records, files and documents that constitute reliable sources of the information described herein. Logos are for identification purposes only and may be trademarks of their respective companies. NAI Capital Commercial, Inc. CAL DRE Lic. #02130474

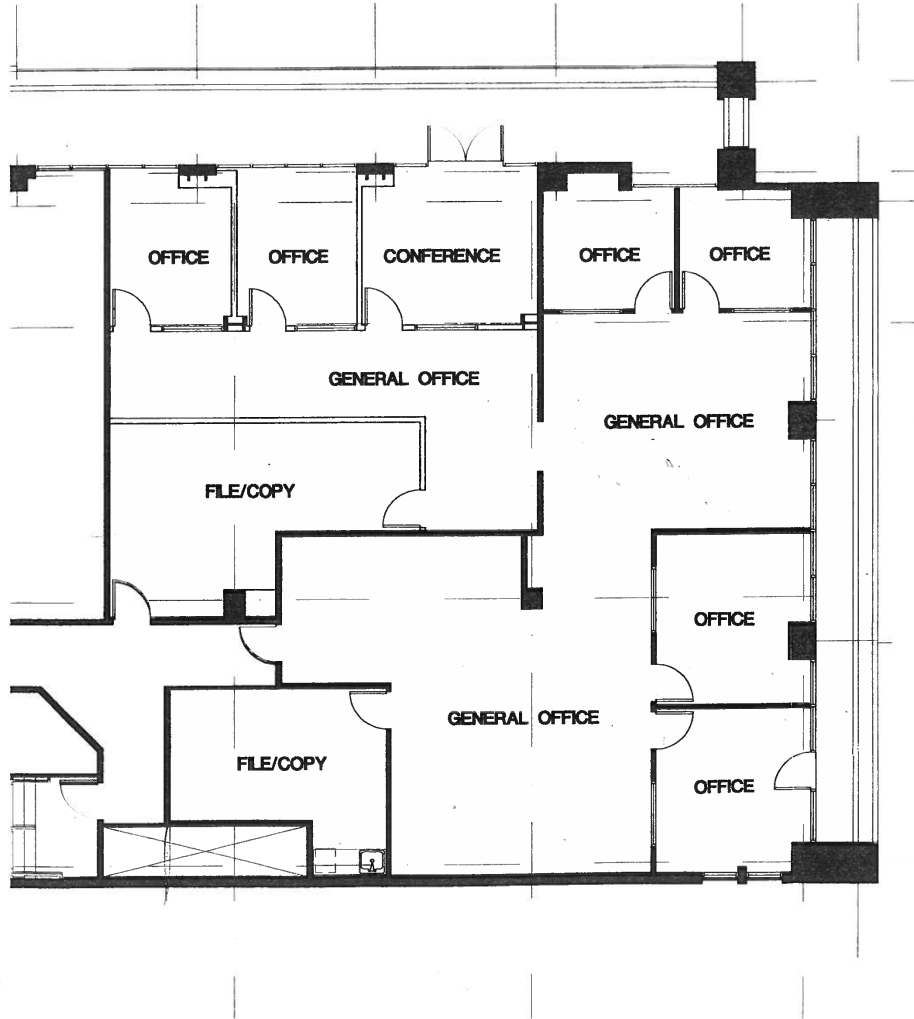
225 S. Lake Avenue, Suite
M270 Pasadena, CA 91101
626 564 4800 tel
naicapital.com

OFFICE SPACE FOR LEASE

The Exchange

130 N BRAND BLVD, GLENDALE, CA 91203

Suite 310



OVERVIEW

| Suite | Type | Rate | Lease | Size | Available |
|-------|--------|--------------|--------------|----------|-------------|
| 310 | Office | \$2.45 SF/Mo | Full Service | 3,518 SF | Immediately |

For More Information

John Martin

Senior Vice President

O: 626 204 1503

jmartin@naicapital.com | CalDRE #01280892



No warranty, express or implied, is made as to the accuracy of the information contained herein. This information is submitted subject to errors, omissions, change of price, rental or other conditions, withdrawal without notice, and is subject to any special listing conditions imposed by our principals. Cooperating brokers, buyers, tenants and other parties who receive this document should not rely on it, but should use it as a starting point of analysis, and should independently confirm the accuracy of the information contained herein through a due diligence review of the books, records, files and documents that constitute reliable sources of the information described herein. Logos are for identification purposes only and may be trademarks of their respective companies. NAI Capital Commercial, Inc. CAL DRE Lic. #02130474

225 S. Lake Avenue, Suite
M270 Pasadena, CA 91101
626 564 4800 tel
naicapital.com