

Amelia Point

Amelia, OH

Property Highlights

- + In-line Retail Space Available: 1,453 -3,121 SF
 - + Outlots Available: 0.5 - 2.4 Acres
 - + Signalized access from OH-125
 - Two non-signalized access points
 - + Tremendous residential growth
 - + Less than 4 miles from I-275
 - + Less than 2 miles from West Clermont High School (2,200 Students)
- + Nearby retailers include: Dickey's Barbecue, Chipotle, Kroger, McDonalds, Jimmy John's, Donatos, Ace Hardware and more
 - + Traffic Counts:
 - OH-125: 31,409 AADT (2023)
 - I-275: 68,765 AADT (2023)

1227 Ohio Pike
Amelia, OH 45102

[Click Here for Drone Video](#)



Contact Us

John Abraham

First Vice President
+1 513 369 1315
john.abraham@cbre.com

Mike Seliga

Associate
+1 513 369 1394
mike.seliga@cbre.com

Lacey Kelly

Associate
+1 513 369 1640
lacey.kelly@cbre.com

Amelia Point

1227 Ohio Pike | Amelia, OH 45102

For Lease

Available Spaces



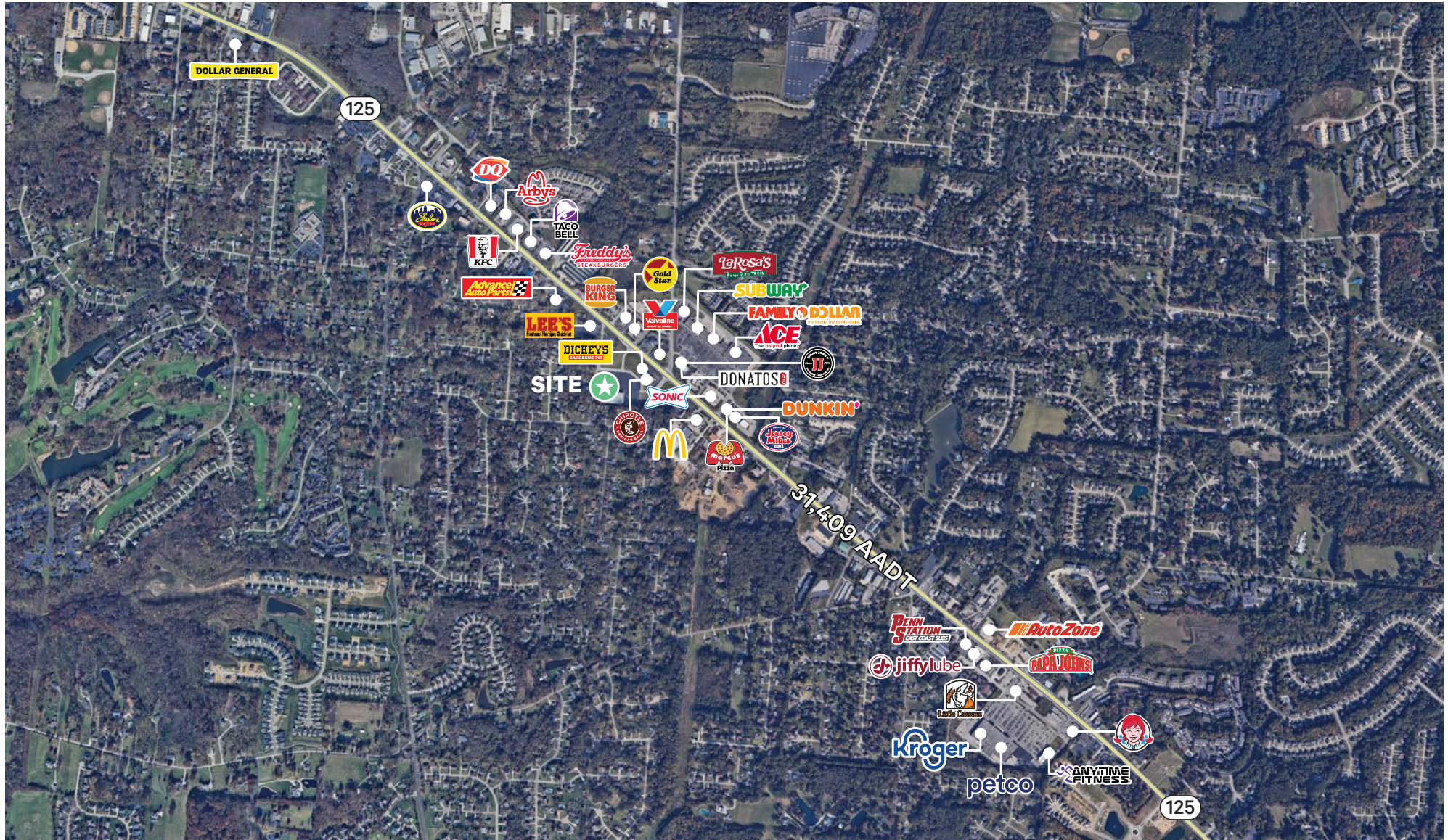
SPACE	TENANT	SF
1227-A	CHIPOTLE	3,662
1227-B	SPORT CLIPS	1,450
1227-C	AVAILABLE	1,668
1227-D	AVAILABLE	1,453
1227-E	DICKEY'S	2,415

- Space C has 24' of frontage
- Space D has 21' of frontage
- Ceiling height 14' clear

Site Plan



Site Overview

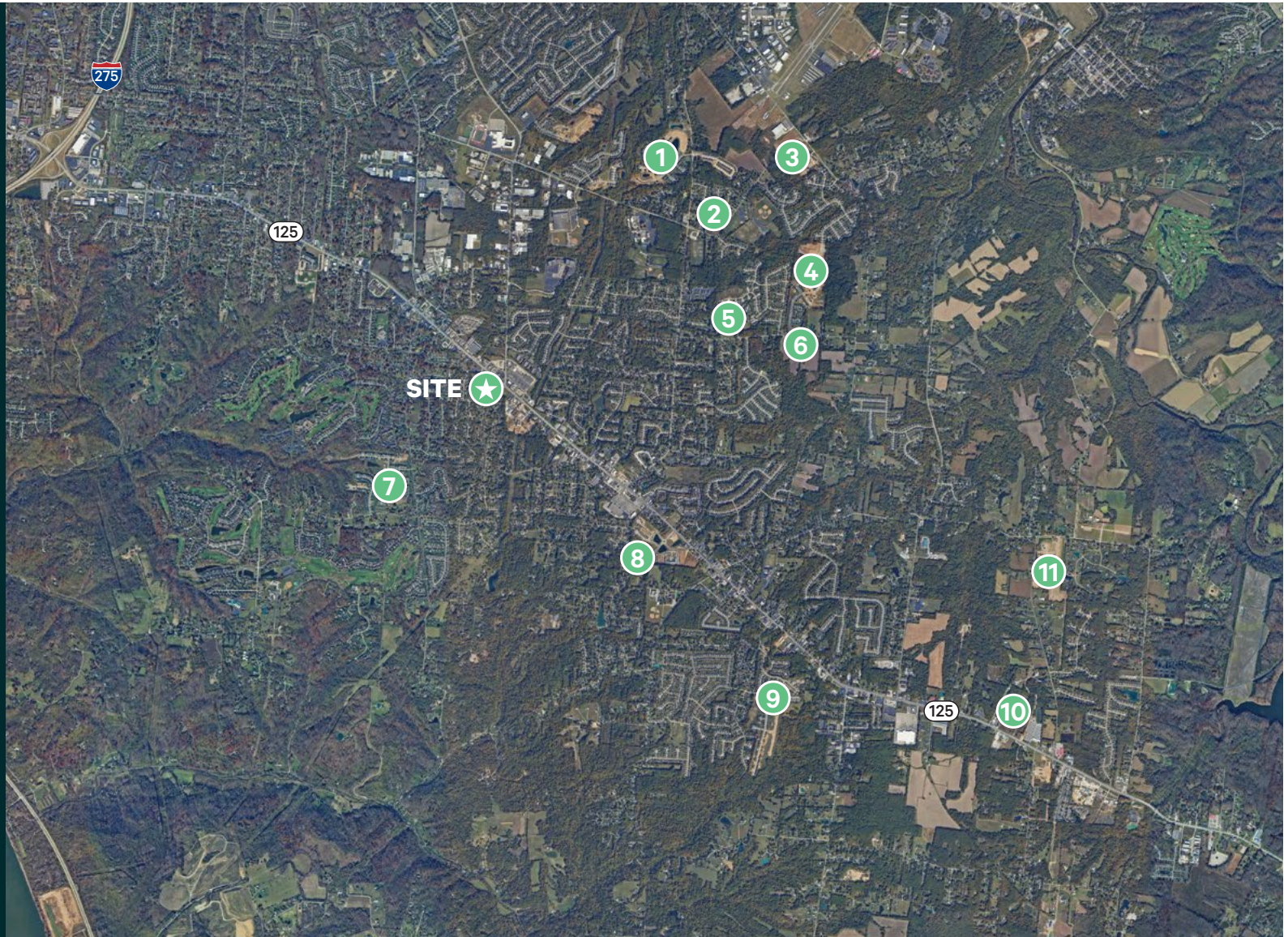


Housing Development Map

- 1. Billingsley Subdivision**
(68 single family attached,
155 detached)
- 2. Olivewood Parke**
(82 single family attached)
- 3. Forest Grove**
(95 single family detached)
- 4. Rosewood Subdivision**
(181 single family detached)
- 5. 295 Judd Rd**
(59 single family attached)
- 6. Kinsdale Subdivision**
(95 single family detached)
- 7. Prestwick Place**
(219 lots)
- 8. Glen Mary Park**
(121 lots)
- 9. Woodside Park**
(286 lots)
- 10. Redwood Apartments**
(120 multi-family)
- 11. Heritage Farms**
(81 single family detached)

Total Units Planned:

816 single family
120 multi-family
626 lots



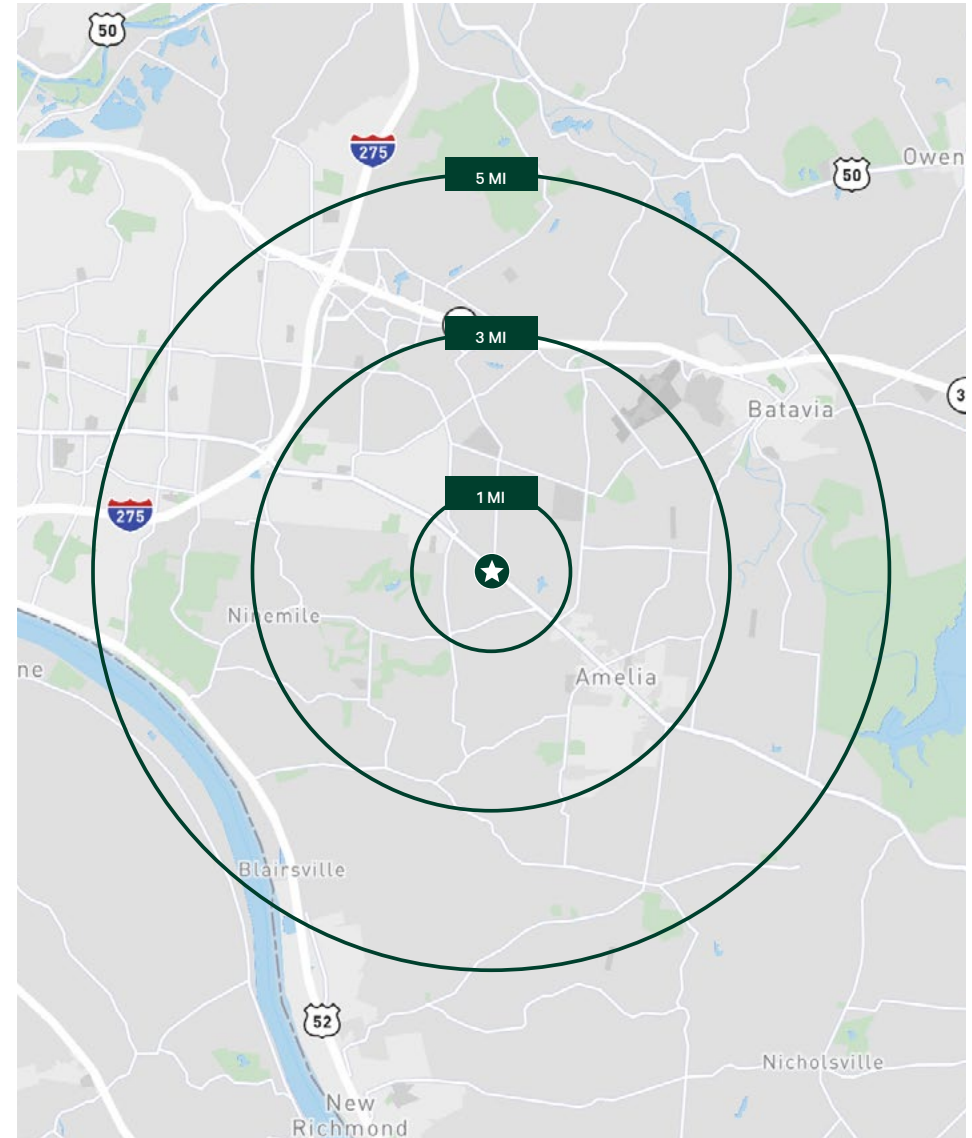
Amelia Point

1227 Ohio Pike | Amelia, OH 45102

For Lease

Market Insights

2024 Demographics	1 Miles	3 Miles	5 Miles
Population	6,540	44,459	88,375
Daytime Population	6,219	33,234	77,042
Median Age	39.1	38.0	39.0
Households	2,410	18,406	36,151
Average Household Income	\$95,112	\$96,315	\$98,984



Contact Us

John Abraham

First Vice President

+1 513 369 1315

john.abraham@cbre.com

Mike Seliga

Associate

+1 513 369 1394

mike.seliga@cbre.com

Lacey Kelly

Associate

+1 513 369 1640

lacey.kelly@cbre.com

© 2023 CBRE, Inc. All rights reserved. This information has been obtained from sources believed reliable, but has not been verified for accuracy or completeness. You should conduct a careful, independent investigation of the property and verify all information. Any reliance on this information is solely at your own risk. CBRE and the CBRE logo are service marks of CBRE, Inc. All other marks displayed on this document are the property of their respective owners, and the use of such logos does not imply any affiliation with or endorsement of CBRE. Photos herein are the property of their respective owners. Use of these images without the express written consent of the owner is prohibited.

CBRE