



INDUSTRIAL FOR LEASE

CBRE

1470 E Weisgarber Rd
Knoxville, TN 37919

Property Details

Property Summary

This 24,250 SF industrial facility offers a mix of office, clean room, warehouse, and mechanical space. The building includes:

- 18,250 SF Warehouse
- 950 SF Mechanical Shop
- 2,900 SF Office
- 2,150 SF Clean Room (two rooms: 1,650 SF with 12' drop ceiling and 500 SF with 8'10" drop ceiling)
- 17' Clear Height up to 20'8" at Peak
- Previously Fully Conditioned—HVAC infrastructure remains in place for reactivation
- 25 Parking Spaces

Power & Sprinkler

- 1,000 amps, 208V, 3-phase power
- Wet-pipe OH2 sprinkler system. Designed at 0.20 GPM/SF over 1,500 SF (13-head design area) with a 613 GPM system demand

Loading

- Three (3) dock-high doors:
 - Two (2) 8'W × 8'9"H with seals, electric openers, one pit leveler, one edge-of-dock leveler, and one dock lock
 - One (1) 8'W × 8'H with electric opener
- One (1) 12' x 12' drive in door

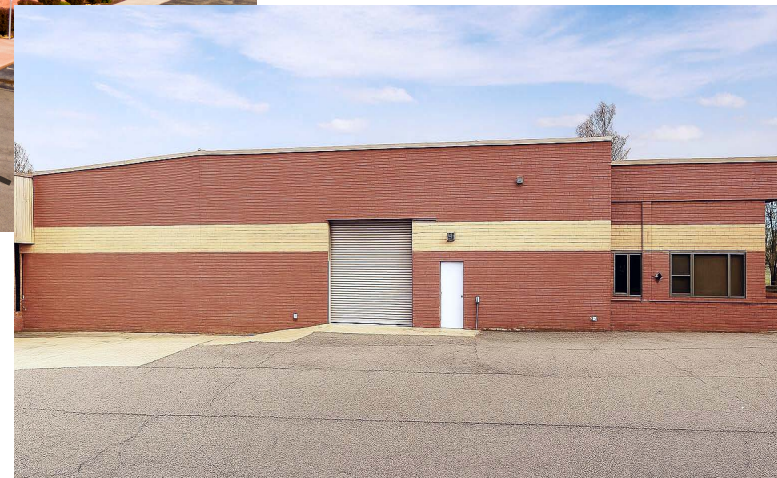
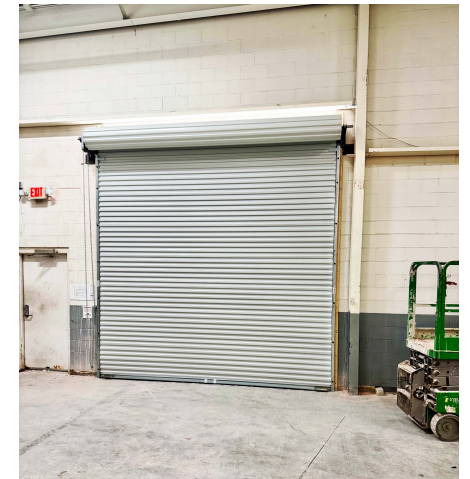
Floor Slab Construction

- 5" reinforced concrete slab with 6×6×10/10 wire mesh, 6-mil vapor barrier, and 4" gravel base



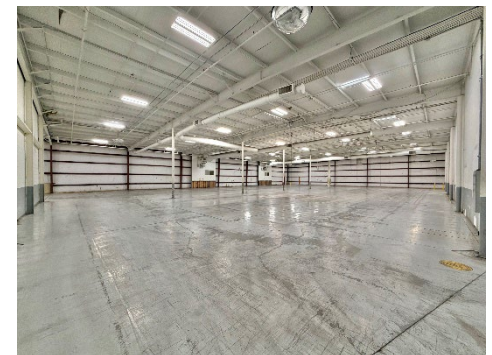
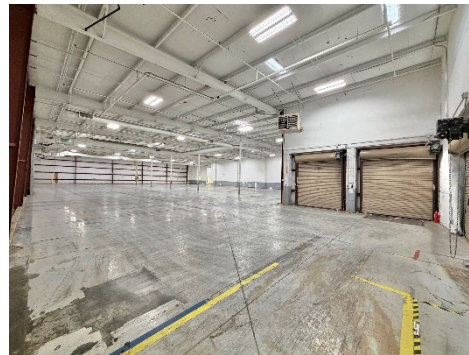
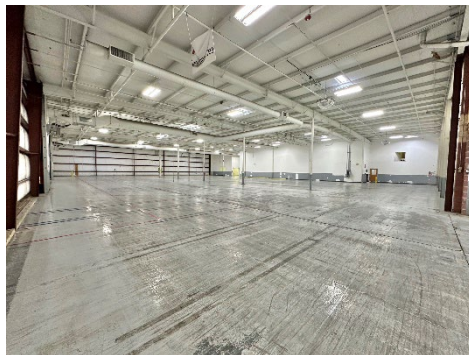
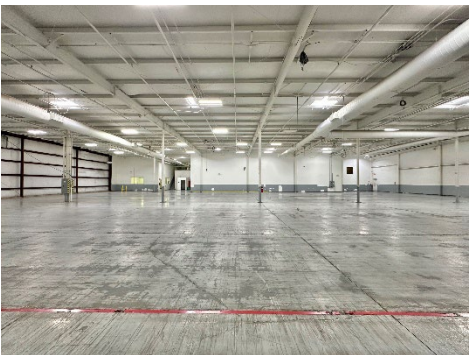
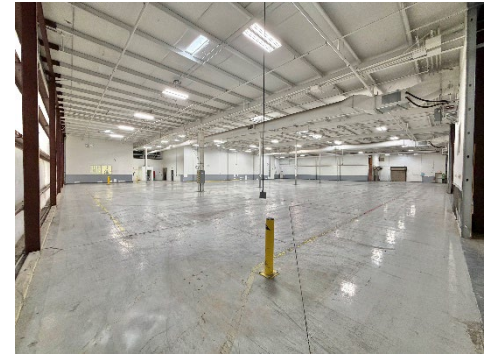
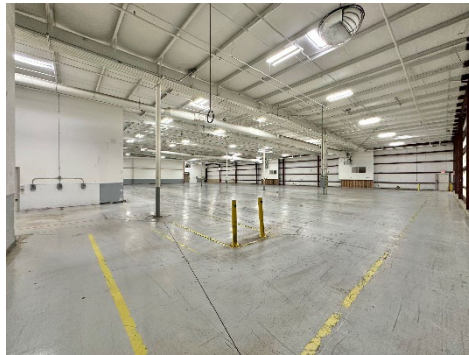
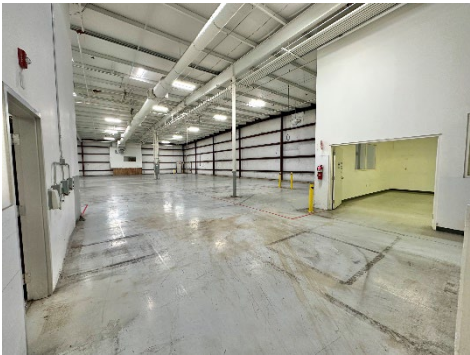
Photo Gallery

Recently installed drive-in door



1470 EAST WEISGARBER ROAD

Photo Gallery



1470 EAST WEISGARBER ROAD

Market Overview



1470 EAST WEISGARBER ROAD

Demographics

1 MILE

4,632

2024 Population

383

2024 Businesses

\$83,128

2024 Average Household Income

3 MILES

64,176

2024 Population

3,079

2024 Businesses

\$102,840

2024 Average Household Income

5 MILES

151,363

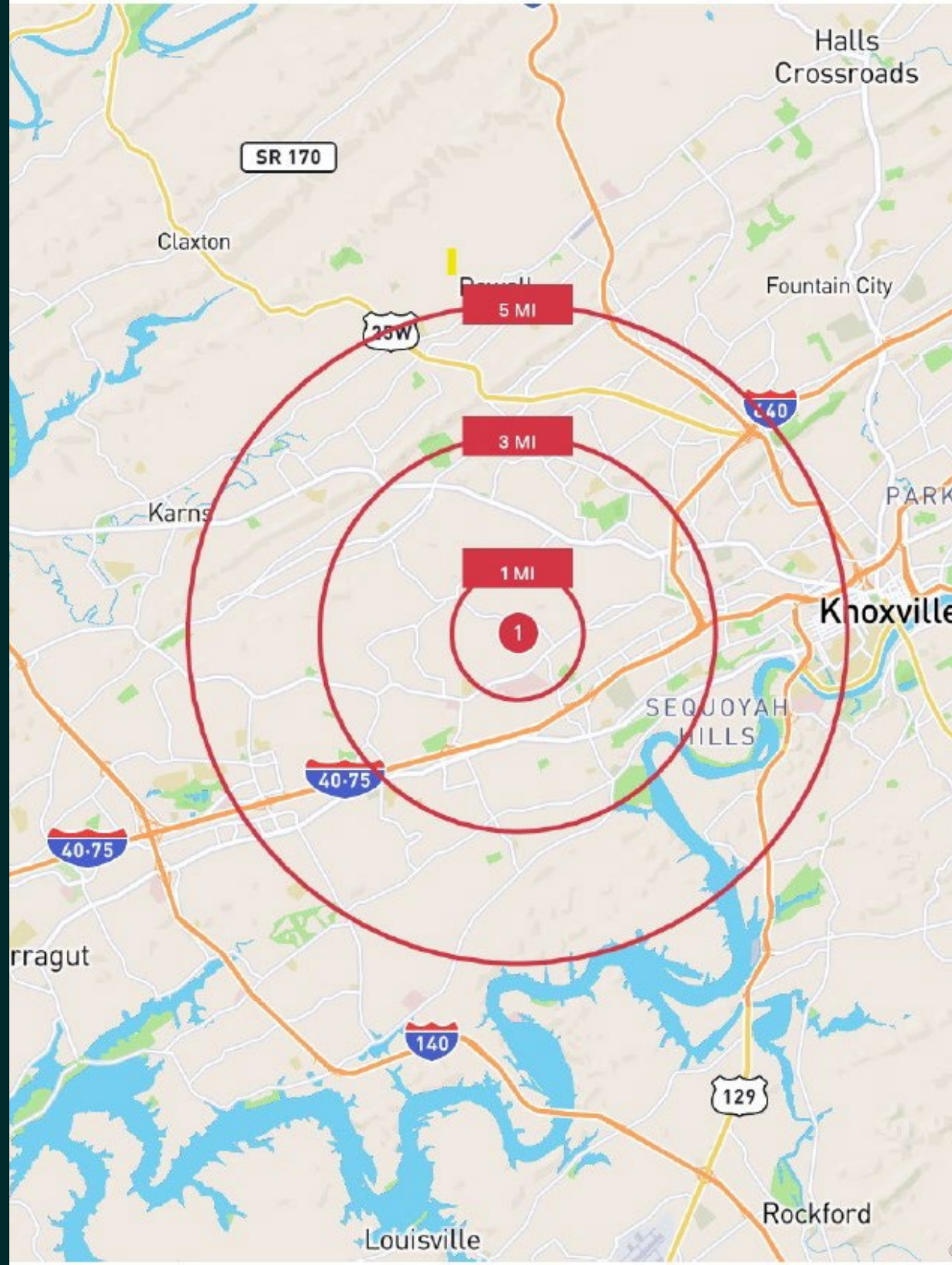
2024 Population

6,865

2024 Businesses

\$103,157

2024 Average Household Income



1470 EAST WEISGARBER ROAD

Meet the Team



Andrew Wilmoth, SIOR, CCIM

Vice President

Direct: 865.498.6500 Cell: 865.322.2556
andrew.wilmoth@cbre.com



Brian Tapp SIOR, CCIM

First Vice President

Direct: 865.498.6500 Cell: 865.719.5703
brian.tapp@cbre.com