

For Lease

Office/Medical



35150-35360 Nankin Blvd.

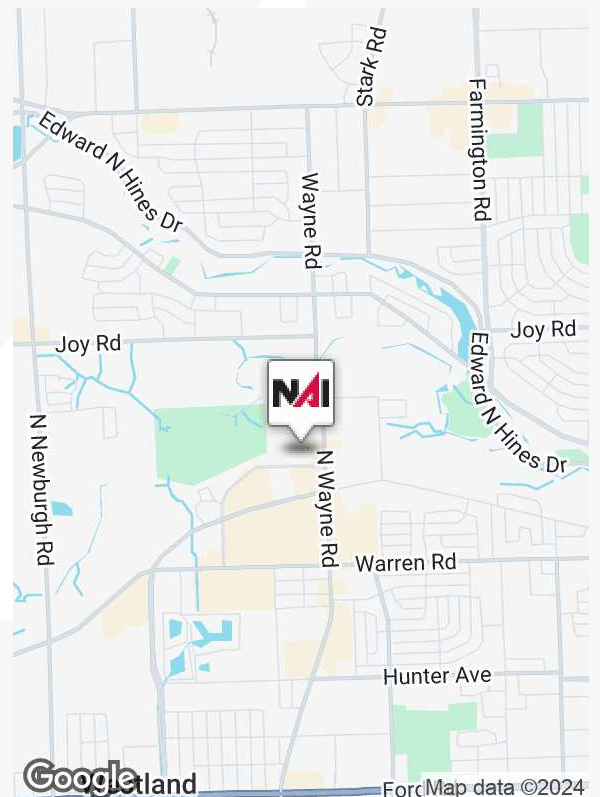
Westland, Michigan 48185

Property Highlights

- Fantastic Medical / Office Space up to 3,369 SF
- Outstanding Westland Location with Easy Ingress & Egress
- Ample Convenient Parking
- Private Walk-In Entry
- Professionally Managed

Available Spaces

Spaces	Lease Rate	Size (SF)
Suite 102	\$15.00 SF/yr	1,666
Suite 103	\$15.00 SF/yr	3,369
Suite 402A	\$15.00 SF/yr	1,229
Suite 502	\$15.00 SF/yr	2,000



For more information

Brad Margolis

O: 248 351 4367
bmargolis@farbman.com

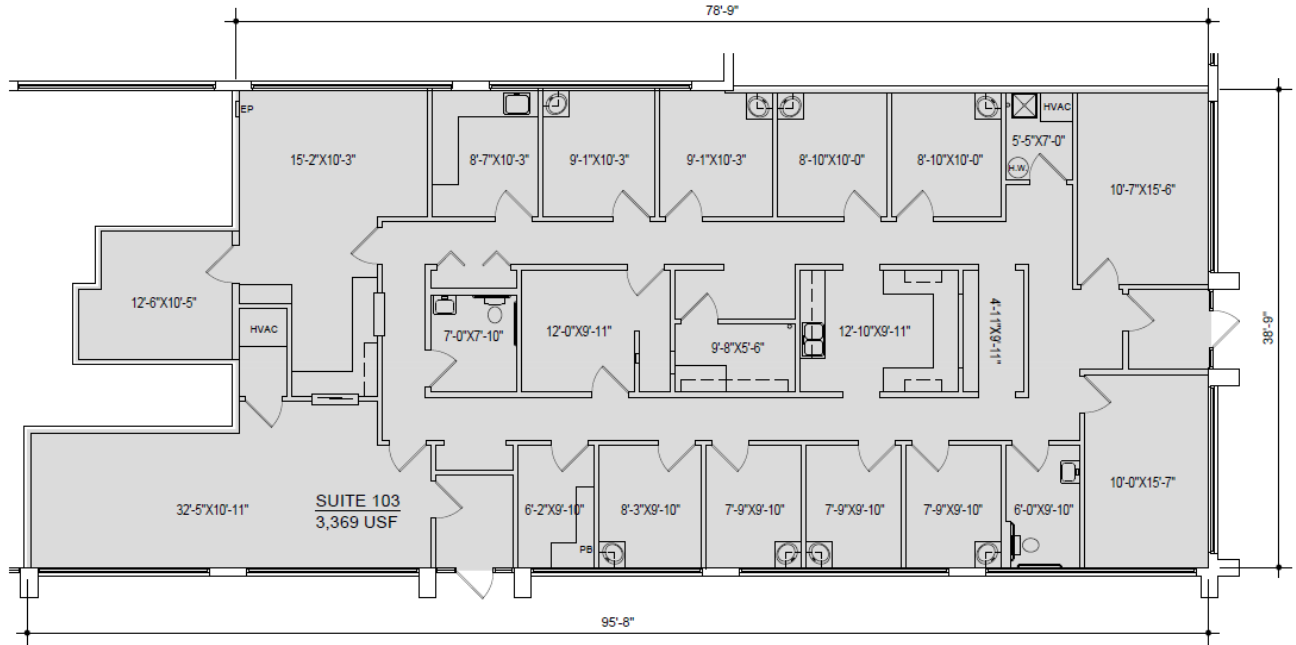


Commercial Real Estate Services, Worldwide.

31700 Middlebelt Road
Suite 225
Farmington Hills, MI 48334
248 353 0500 tel
naifarbman.com

For Lease: Office





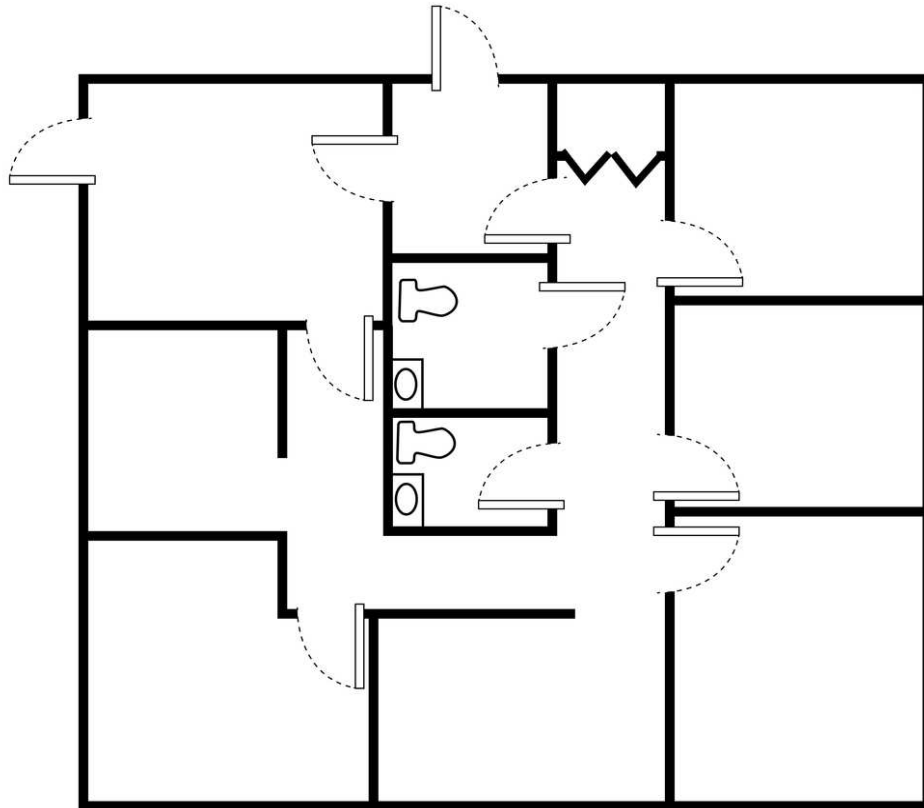
35150 NANKIN BLVD. WESTLAND, MI - SUITE 103 FLOOR PLAN
2-13-23

SCALE: 1/8" = 1'-0"



PREPARED BY METRO CAD GROUP

Suite 402A
1,229 SF



Suite 502 - 2,000 SF



Suite 502