



New Construction, State-of-the-Art Building
Nearing Completion!



201,571 SF AVAILABLE FOR LEASE

PREMIER WAREHOUSE DISTRIBUTION FACILITY AVAILABLE

9615 Norwalk Boulevard | Santa Fe Springs, CA

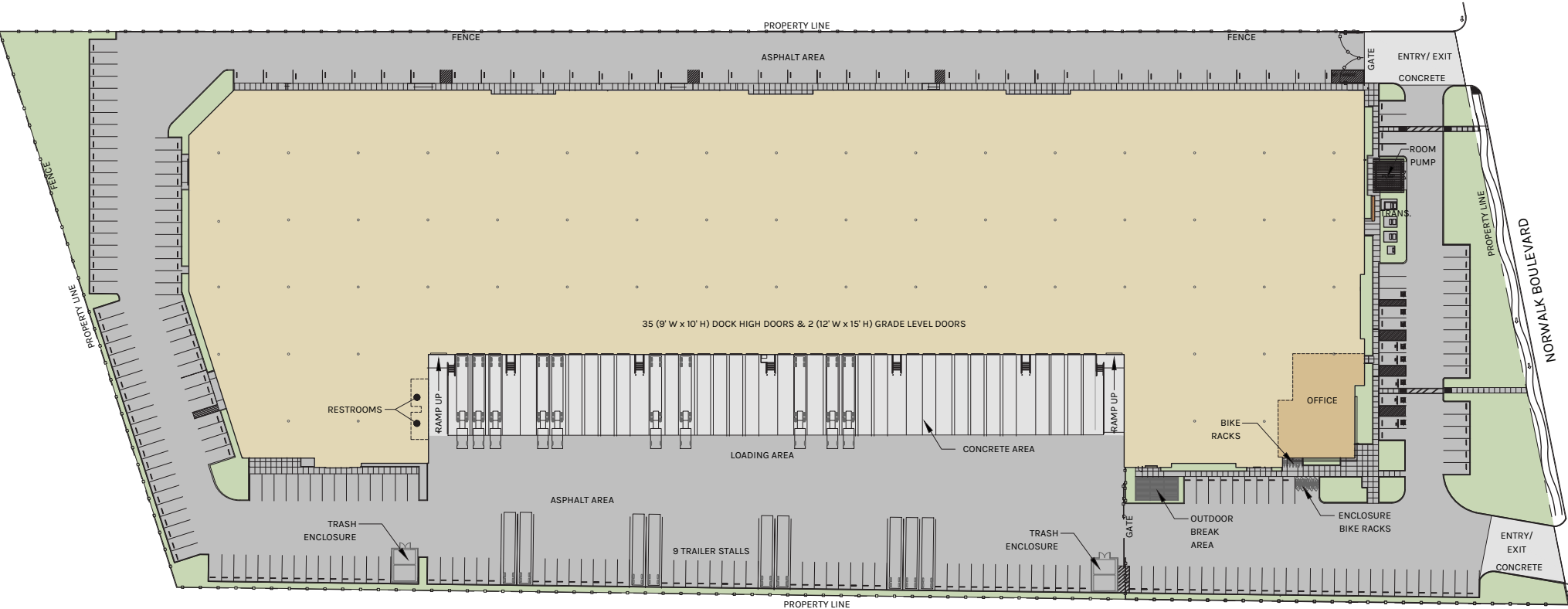




WAREHOUSE DISTRIBUTION FACILITY

- 201,571 SF Warehouse Distribution Building
- 7,767 SF of Two-Story Office Area
- 32' Interior Warehouse Clearance
- 35 Dock High Positions (3 Pit Levelers, 32 Edge of Dock Levelers)
- 2 Ground Level Doors
- Fully Sprinklered ESFR K-25 at 75 PSI
- 4,000 Amp Capacity (Tenant to Verify)
- 52' x 50' Column Spacing
- Remote Warehouse Restrooms
- 9 Trailer Parking Stalls
- 249 Parking Spaces
- Major Frontage on Norwalk Blvd
- Excellent Access to 5 and 605 Freeways
- **LEED - Silver Features including:**
 - Motion Sensor LED Lighting Throughout
 - Touchless Plumbing Fixtures
 - 25 EV Charger Stalls
 - Outdoor Break Area
 - Water Efficient Landscaping & Irrigation System
 - Water Bottle Filling Station
 - TPO Roofing with High Solar Reflectivity Value



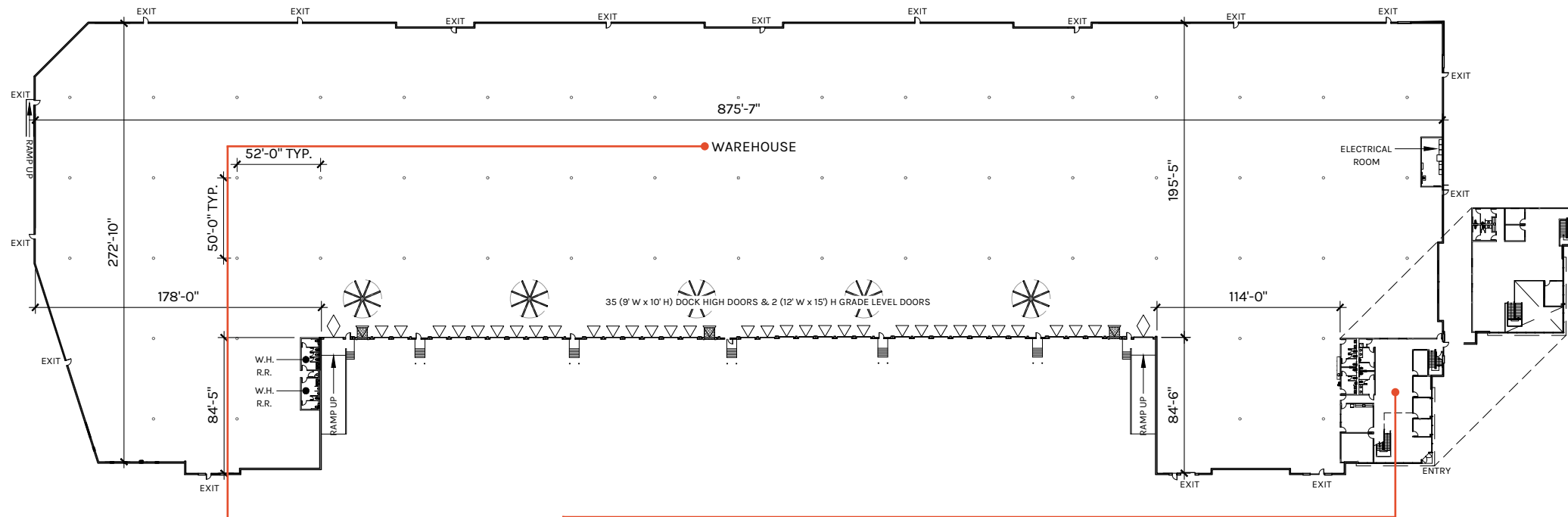


WAREHOUSE
193,804 SF

OFFICE
7,767 SF

TOTAL
201,571 SF

PLAN LAYOUT SUBJECT TO FIELD CONDITIONS AND MAY DIFFER FROM PLAN AS SHOWN. ALL INFORMATION PRESENTED ON THIS DRAWING IS PRESUMED TO BE ACCURATE, HOWEVER TENANT SHOULD VERIFY PERTINENT INFORMATION PRIOR TO COMMITTING TO A LEASE. ANY FURNITURE OR APPLIANCES SHOWN ON PLAN ARE FOR CONCEPT ONLY AND WILL BE TENANT PROVIDED.

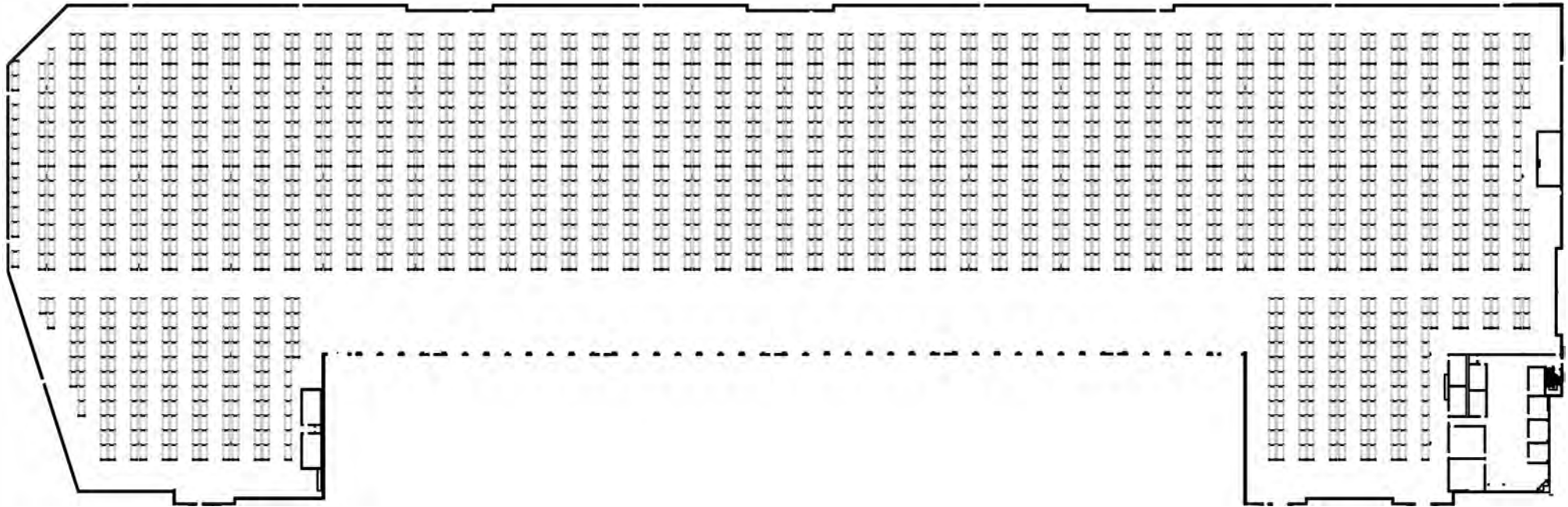


WAREHOUSE
193,804 SF

OFFICE
7,767 SF

TOTAL
201,571 SF

PLAN LAYOUT SUBJECT TO FIELD CONDITIONS AND MAY DIFFER FROM PLAN AS SHOWN. ALL INFORMATION PRESENTED ON THIS DRAWING IS PRESUMED TO BE ACCURATE, HOWEVER TENANT SHOULD VERIFY PERTINENT INFORMATION PRIOR TO COMMITTING TO A LEASE. ANY FURNITURE OR APPLIANCES SHOWN ON PLAN ARE FOR CONCEPT ONLY AND WILL BE TENANT PROVIDED.



Total Pallet Positions

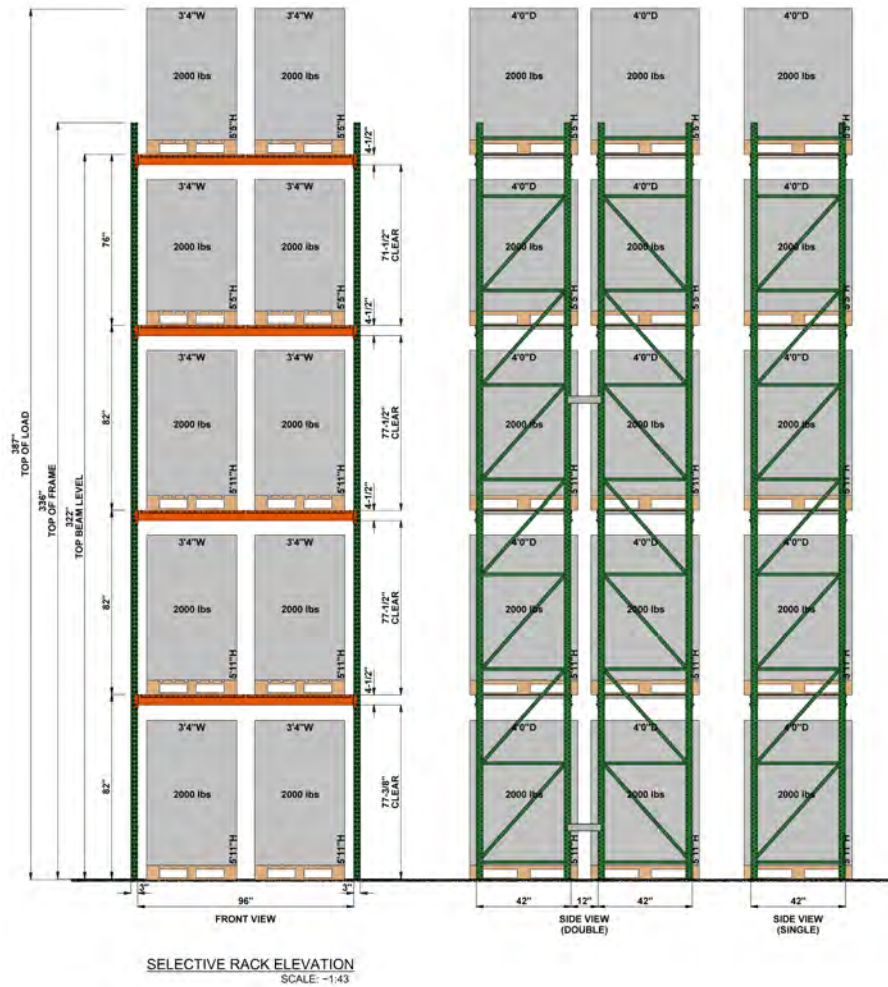
56" pallets: 18,500

64" pallets: 18,500

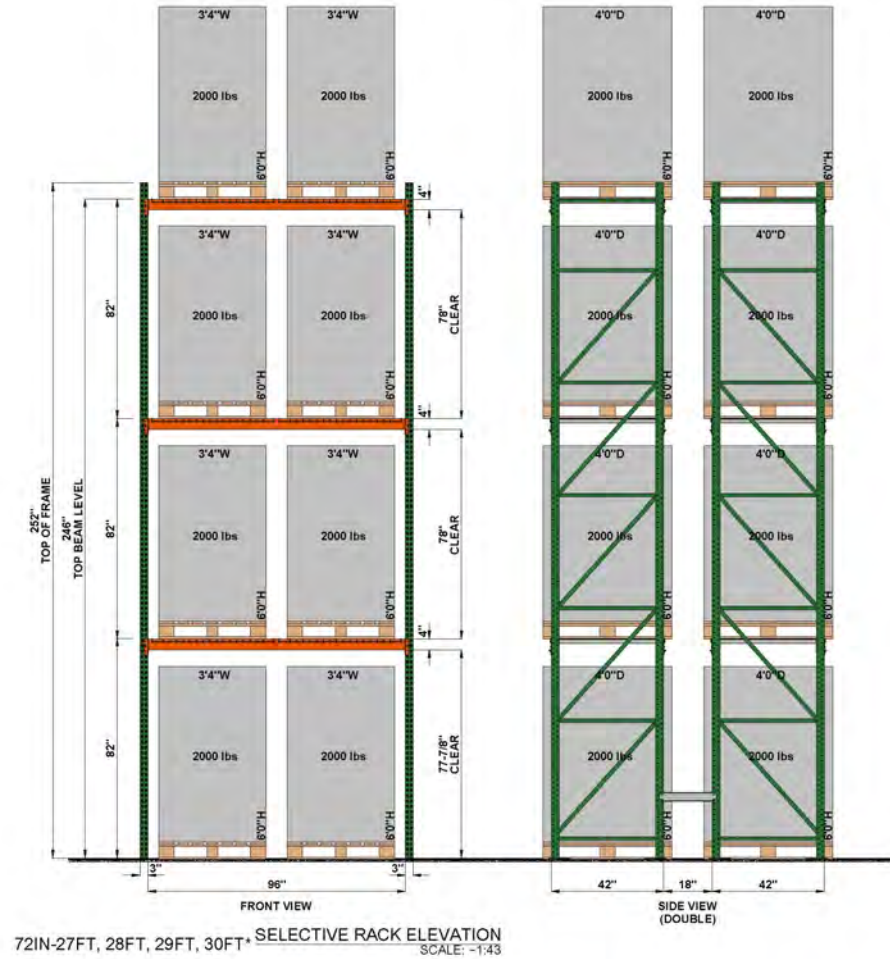
72" pallets: 14,800



56" and 64" Pallets

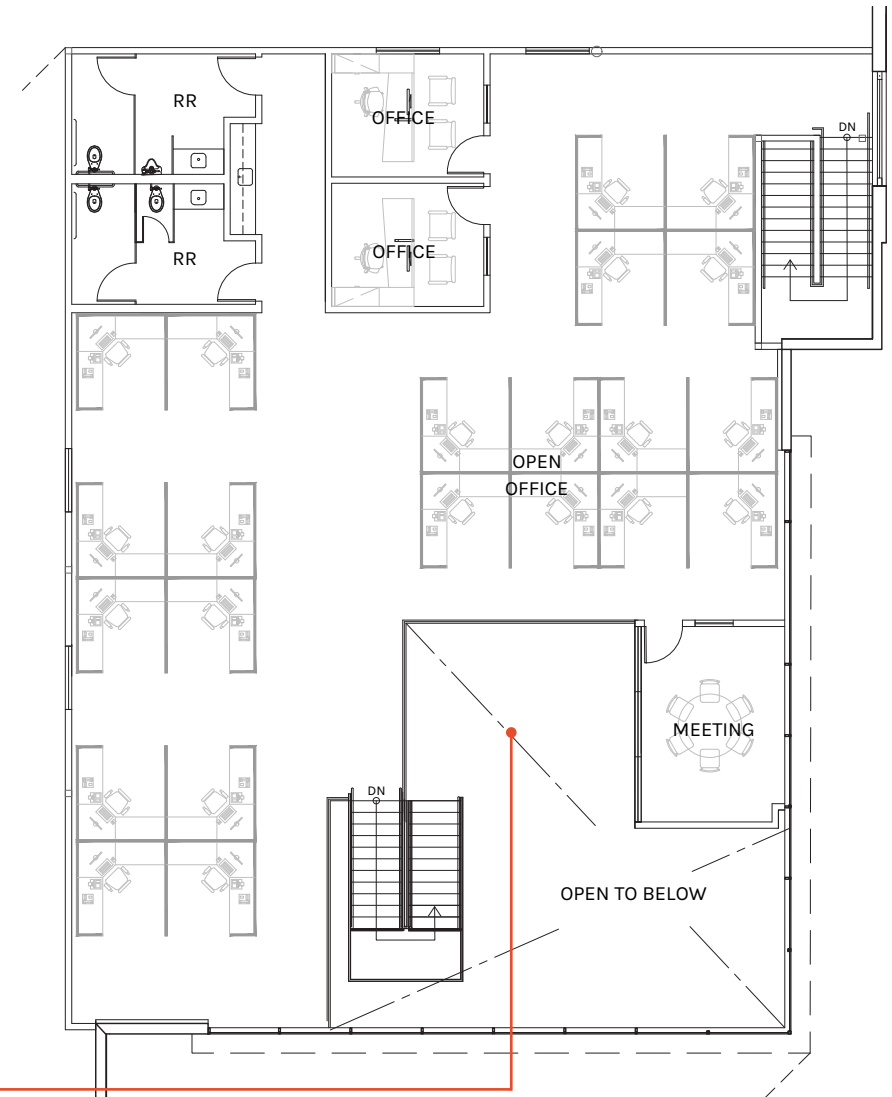
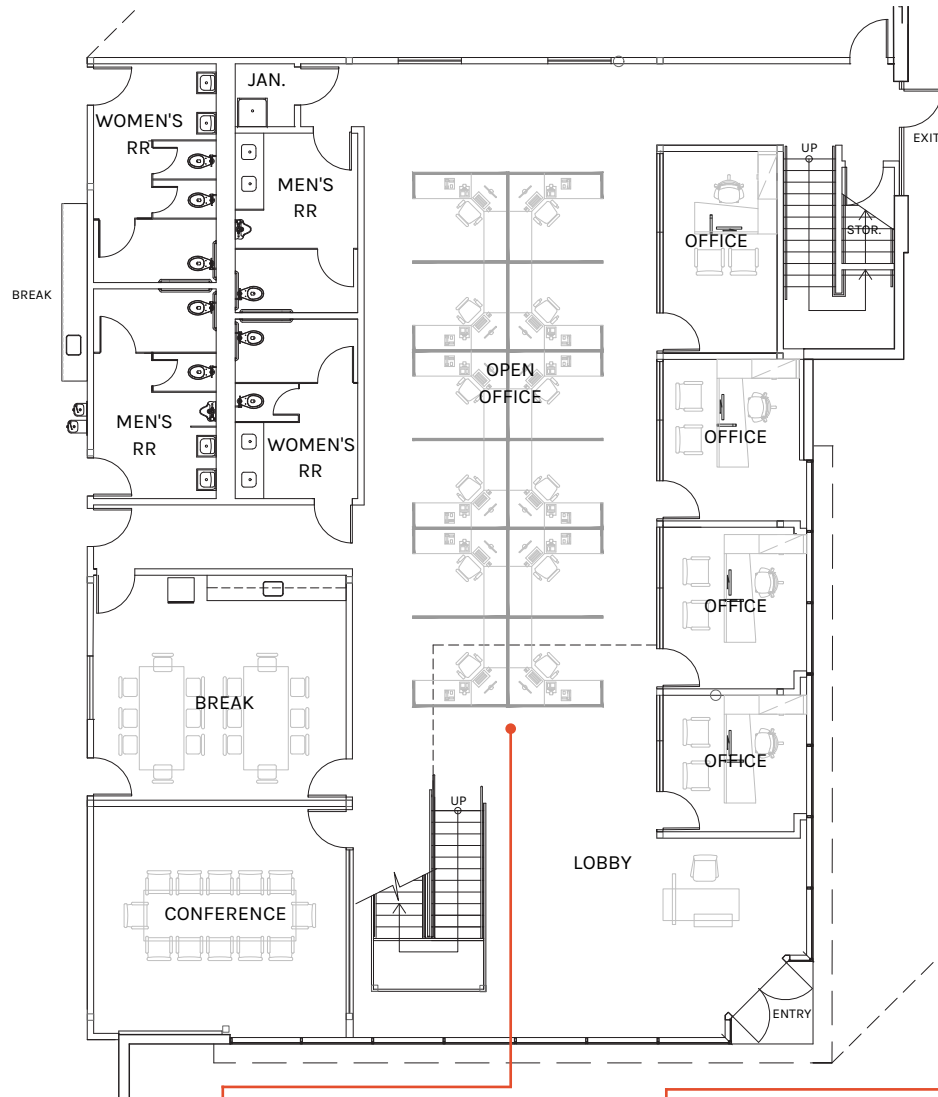


72" Pallets



Office Floor Plan

9615 Norwalk Boulevard

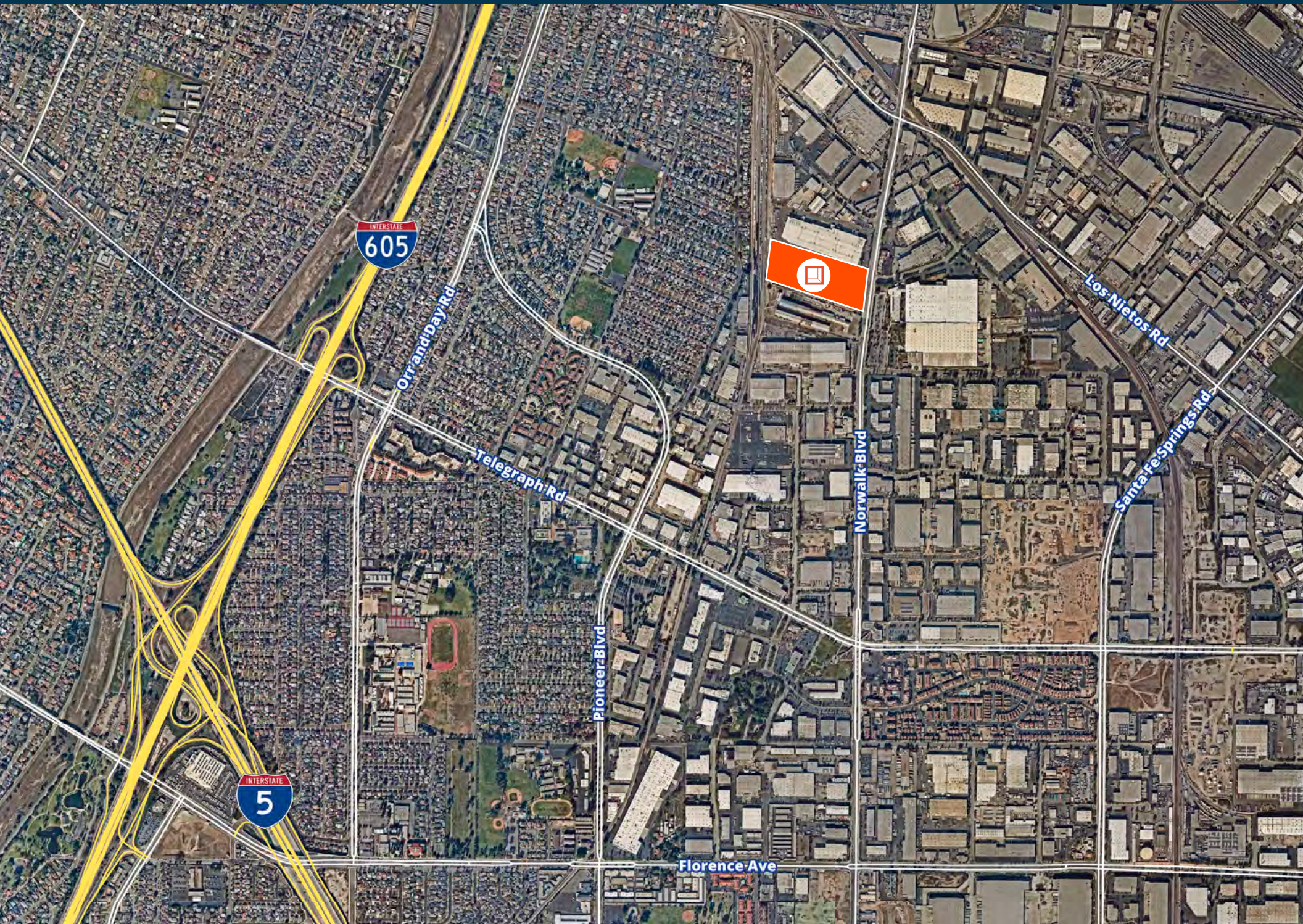


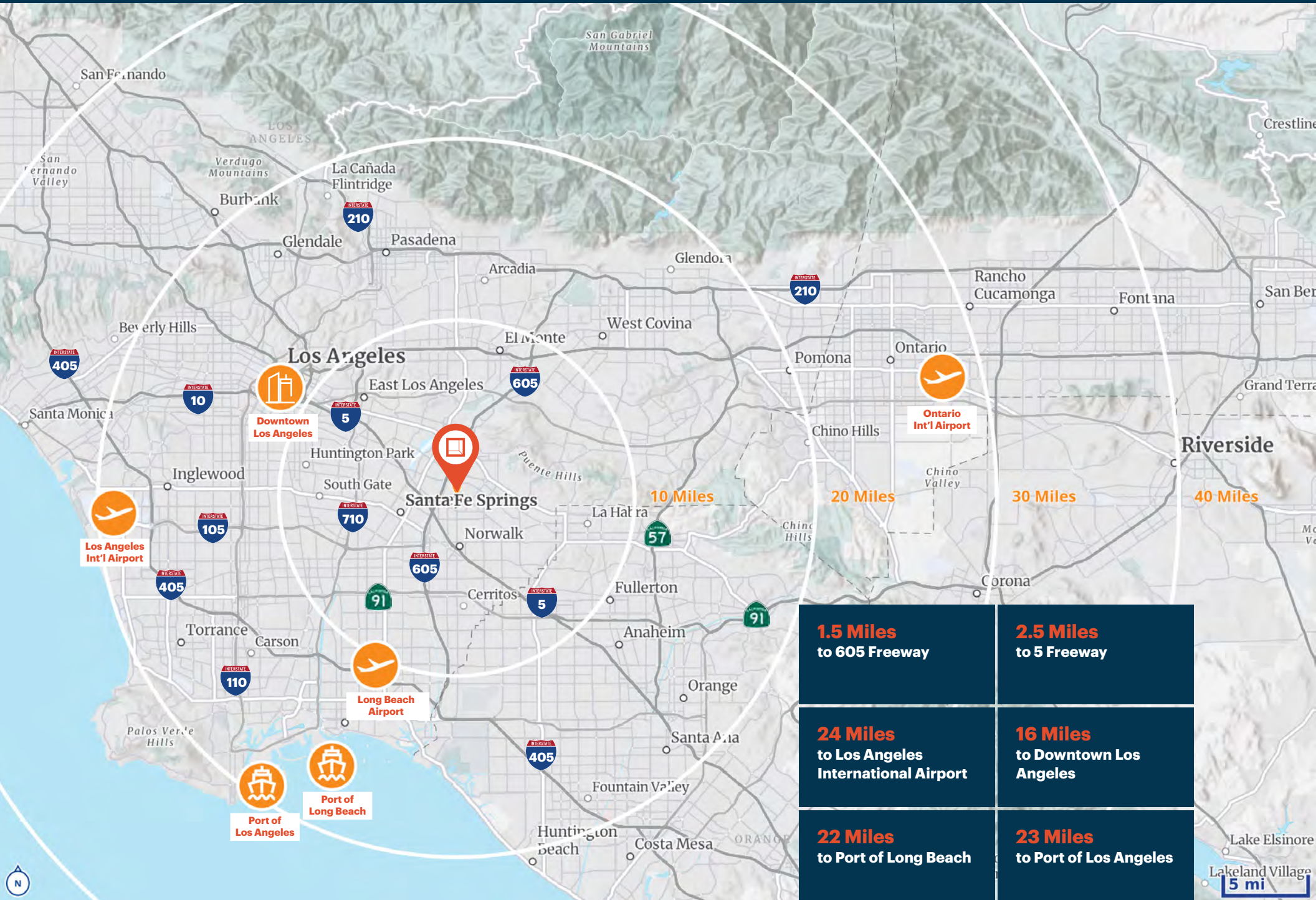
GROUND FLOOR
4,220 SF

MEZZANINE
3,547 SF

TOTAL
7,767 SF

PLAN LAYOUT SUBJECT TO FIELD CONDITIONS AND MAY DIFFER FROM PLAN AS SHOWN. ALL INFORMATION PRESENTED ON THIS DRAWING IS PRESUMED TO BE ACCURATE, HOWEVER TENANT SHOULD VERIFY PERTINENT INFORMATION PRIOR TO COMMITTING TO A LEASE. ANY FURNITURE OR APPLIANCES SHOWN ON PLAN ARE FOR CONCEPT ONLY AND WILL BE TENANT PROVIDED.







**Rexford
Industrial**

Leasing Contacts

Mike Foley

Executive Vice President
t 310-321-1813
mike.foley@colliers.com
LIC # 00771079

Chris Sheehan, SIOR

Senior Executive Vice President
t 310-321-1831
chris.sheehan@colliers.com
LIC # 01202469

Senna De La Cruz, CCIM

Vice President
t 310-321-1862
senna.delacruz@colliers.com
LIC # 02038640



Colliers

2141 Rosecrans Avenue
Suite 1120
El Segundo, CA 90245

t 310-787-1000
colliers.com

Corporate License #01908231

Copyright © 2025 Colliers International. Information herein has been obtained from sources deemed reliable, however its accuracy cannot be guaranteed. The user is required to conduct their own due diligence and verification.