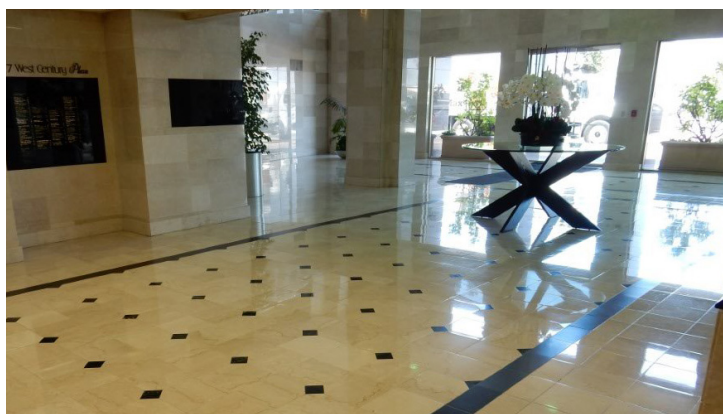
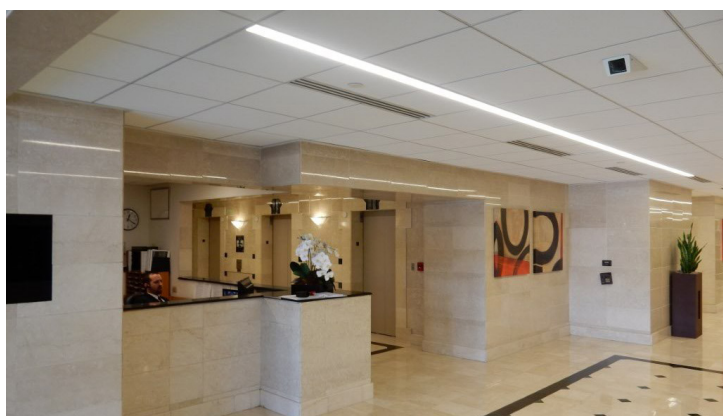
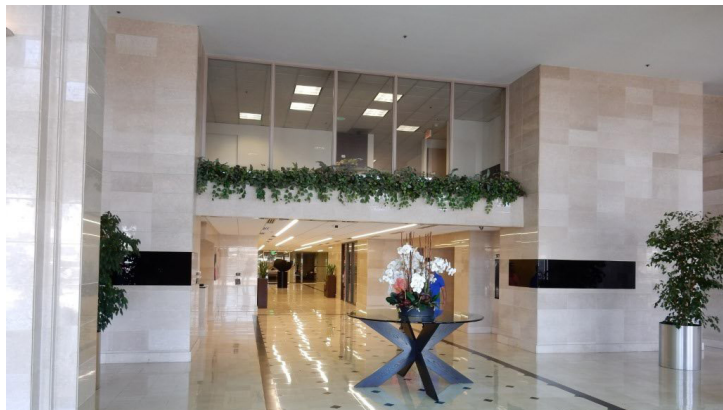


FOR LEASE

5777 W Century Boulevard | Los Angeles, CA



5777
WEST CENTURY PLAZA



Available Suites Ranging 405 RSF - 53,595 SF

- 16-Story, class "A" office tower
- Up to 53,000 SF of contiguous space on 4th floor
- Elegant, all marble / granite lobby
- Excellent airport, ocean, & LA basin views
- 24-hour access
- Modern surveillance system
- Around-the-clock security guard service
- Enterprise class bandwidth internet
- On-site internet service provider, IT support, owner management, conference facilities, and café
- Executive-type exercise room for tenants in the complex
- Adjacent to LAX Hilton & Marriott hotels
- Complimentary valet
- Building top signage available
- Parking ratio: 3/1000

Asking Rate:

\$2.00 - \$2.50 / PSF FSG



**16 STORY
CLASS A
OFFICE BLDG**



**AROUND-THE-
CLOCK SECURITY
GUARD SERVICE**



**CLOSE
PROXIMITY TO
LAX AIRPORT**

Availabilities as of September 27, 2022

FLOOR/SUITE	SQ. FT.	RATE	DESCRIPTION
100	840	\$2.20 NNN	Retail/office space
103	1,490	\$2.20 NNN	Retail/office space
105	1,084	\$2.20 NNN	Retail/office space
103/105	2,574	\$2.20 NNN	Retail/office space
220	2,076	\$2.00 FSG	3 offices, conference room, kitchen, 1 office/storage room, IT/storage room, open area, reception
232	1,517	\$2.00 FSG	3 offices, conference room, kitchen, IT/server room, reception
310	7,374	\$2.00 FSG	15 offices, 2 conference rooms, IT/storage, open area, reception - Click for Virtual Tour!
370	3,283	\$2.00 FSG	8 offices, training room, kitchen, open area
390	2,109	\$2.00 FSG	3 offices, open area
4th Floor	33,130-53,595	\$2.00 FSG	Full floor
520	5,231	\$2.10 FSG	2 offices, 3 storage rooms, kitchen, IT/server room, open area
535	935	\$2.10 FSG	2 offices, kitchen, storage
555	915	\$2.10 FSG	Open area
560	2,810	\$2.10 FSG	9 offices, IT/server room, open area, reception
605	2,769	\$2.10 FSG	
625	606	\$2.10 FSG	3 offices, reception
605/625	3,375	\$2.10 FSG	
655	1,080	\$2.10 FSG	3 offices, open area
670	1,019	\$2.10 FSG	2 offices, conference, reception
675	10,700	\$2.10 FSG	
700	7,896	\$2.10 FSG	Multiple offices, kitchen, open area

Copyright © Lee & Associates. All rights reserved. No part of this work may be reproduced or distributed without written permission of the copyright owner. The information contained in this report was gathered by Lee & Associates from sources believed to be reliable. Lee & Associates, however, makes no representation concerning the accuracy or completeness of such information and expressly disclaims any responsibility for any inaccuracy contained herein.

Availabilities as of September 27, 2022

FLOOR/SUITE	SQ. FT.	RATE	DESCRIPTION
700/715/725	10,614	\$2.10 FSG	Multiple offices, kitchen, open area
760	3,673	\$2.10 FSG	5 offices, kitchen, open area, IT room
785	5,221	\$2.10 FSG	8 offices, storage room, kitchen, open area
790	1,424	\$2.10 FSG	2 offices, conference room, open area
760/790	5,097	\$2.10 FSG	Multiple offices, kitchen, open area
760/785/790	10,324	\$2.10 FSG	Multiple offices, 2 kitchens, open area
805	1,924	\$2.25 FSG	2 offices, kitchen, IT/server room, open area
855	2,876	\$2.25 FSG	7 offices, kitchen, storage room, IT/server room, open area
865	980	\$2.25 FSG	3 offices, IT/server room, open area
875	1,691	\$2.25 FSG	2 window offices, 3 interior offices, open area
876	1,688	\$2.25 FSG	1 office, IT/server room, open area
890	1,745	\$2.25 FSG	2 window offices, open area
895	4,096	\$2.25 FSG	9 offices, conference room, kitchen, open area
935	513	\$2.25 FSG	2 offices
955	1,064	\$2.25 FSG	2 offices, open area
1000	10,460	\$2.25 FSG	6 window offices, 2 kitchens, open area
1010/1030	2,292	\$2.25 FSG	
1015	1,100	\$2.25 FSG	2 window offices, conference room, storage room, open area
1025	1,214	\$2.25 FSG	3 offices, open area, reception
1033	695	\$2.25 FSG	Open area
1045	2,592	\$2.25 FSG	3 window offices, conference room, kitchen, open area, reception

Copyright © Lee & Associates. All rights reserved. No part of this work may be reproduced or distributed without written permission of the copyright owner. The information contained in this report was gathered by Lee & Associates from sources believed to be reliable. Lee & Associates, however, makes no representation concerning the accuracy or completeness of such information and expressly disclaims any responsibility for any inaccuracy contained herein.

Availabilities as of September 27, 2022

FLOOR/SUITE	SQ. FT.	RATE	DESCRIPTION
1075	879	\$2.25 FSG	1 office, storage room, open area
1101	1,922	\$2.25 FSG	4 offices, kitchen, IT/server room, open area, reception
1125	600	\$2.25 FSG	3 offices, open area
1135	1,434	\$2.25 FSG	4 offices, kitchen, open area, reception
1150	3,051	\$2.25 FSG	5 window offices, 2 interior offices, 2 conference rooms, kitchen, storage room, open area, reception
1156	405	\$2.25 FSG	1 office, open area, reception
1180	1,385	\$2.25 FSG	2 window offices, 2 interior offices, open area
1200	6,533	\$2.25 FSG	2 offices, kitchen, IT/server room, storage room, open area
1210	1,572	\$2.25 FSG	Open area
1200/1210	8,105	\$2.25 FSG	2 offices, kitchen, IT/server room, storage room, open area
1225	2,267	\$2.25 FSG	3 offices, kitchen, IT room, open area, reception
1230	828	\$2.25 FSG	2 offices, open area, reception
1235	818	\$2.25 FSG	1 window office, IT / server room, open area
1280	3,067	\$2.25 FSG	5 offices, sink, open area
1415	2,003	\$2.50 FSG	5 offices, IT / server room, open area
1435	580	\$2.50 FSG	1 office, IT/server room, open area
1450	3,420	\$2.50 FSG	13 offices, kitchen, IT room, storage, open area
1455	1,092	\$2.50 FSG	1 office, server room, open area
1470	1,856	\$2.50 FSG	3 window offices, 1 interior office, open area
1450/1470	5,276	\$2.50 FSG	16 offices, kitchen, storage room, open area, reception
1510	1,551	\$2.50 FSG	2 window offices, kitchen, IT room, open area
1520	1,695	\$2.50 FSG	Spec Suite - open area - Click for Virtual Tour!

Copyright © Lee & Associates. All rights reserved. No part of this work may be reproduced or distributed without written permission of the copyright owner. The information contained in this report was gathered by Lee & Associates from sources believed to be reliable. Lee & Associates, however, makes no representation concerning the accuracy or completeness of such information and expressly disclaims any responsibility for any inaccuracy contained herein.

Availabilities as of September 27, 2022

FLOOR/SUITE	SQ. FT.	RATE	DESCRIPTION
1540	1,217	\$2.50 FSG	2 offices, IT/server room, open area
1550	2,302	\$2.50 FSG	5 offices, 2 storage rooms, open area
1555	7,422	\$2.50 FSG	5 offices, kitchen, IT/server room, storage rooms, open area, reception
1575	2,054	\$2.50 FSG	5 offices, 2 storage rooms, open area
1590	1,167	\$2.50 FSG	2 offices, open area
1595	1,743	\$2.50 FSG	3 offices, kitchen, open area, reception
1590/1595	2,910	\$2.50 FSG	5 offices, kitchen, open area, reception
1605	2,567	\$2.50 FSG	2 offices, conference room, IT room, open area
1606	1,417	\$2.50 FSG	3 interior offices, open area
1620	1,002	\$2.50 FSG	1 window office, 2 interior offices, open area
1630	1,222	\$2.50 FSG	3 window offices, open area
1665	1,698	\$2.50 FSG	1 window office, open area, corporate suite with shared access to conference room and kitchen/lounge area - 3 window offices, kitchen, storage closet
1677	476	\$2.50 FSG	Corporate suite with shared access to conference room and kitchen/lounge area - 1 window office, open area
1680	1,405	\$2.50 FSG	Corporate suite with shared access to conference room and kitchen/lounge area - 3 offices, kitchen, open area
1750	3,485	\$2.50 FSG	6 offices, conference room, kitchen, IT room, open area, reception
1775	2,078	\$2.50 FSG	5 offices, conference room, open area, IT room, storage room
1790	2,928	\$2.50 FSG	4 offices, open area
1775/1790	5,006	\$2.50 FSG	9 offices, conference room, IT room, storage room, open area

*Rental rates are subject to change without prior notice

Copyright © Lee & Associates. All rights reserved. No part of this work may be reproduced or distributed without written permission of the copyright owner. The information contained in this report was gathered by Lee & Associates from sources believed to be reliable. Lee & Associates, however, makes no representation concerning the accuracy or completeness of such information and expressly disclaims any responsibility for any inaccuracy contained herein.

5777

WEST CENTURY PLAZA



5777

WEST CENTURY PLAZA

5777 W Century Boulevard | Los Angeles, CA



YOUR LOCAL MARKET EXPERTS

TOM TORABI

Principal | DRE# 00936845

PH: 310.965.1754

E: ttorabi@leelalb.com

TIM SULLIVAN

Principal | DRE# 01368296

PH: 310.965.1745

E: tsullivan@leelalb.com

1411 W. 190TH STREET, SUITE 450, GARDENA CA 90248 ☎ 310-768-8800 | WWW.LEE-ASSOCIATES.COM

Copyright © Lee & Associates. All rights reserved. No part of this work may be reproduced or distributed without written permission of the copyright owner. The information contained in this report was gathered by Lee & Associates from sources believed to be reliable. Lee & Associates, however, makes no representation concerning the accuracy or completeness of such information and expressly disclaims any responsibility for any inaccuracy contained herein.