

RETAIL SPACE

89 MONITOR STREET

Bergen-Lafayette section of Jersey City

HUDSON COUNTY

JERSEY CITY | NEW JERSEY

1,387 SF

New Construction,
Delivery Q1 2022

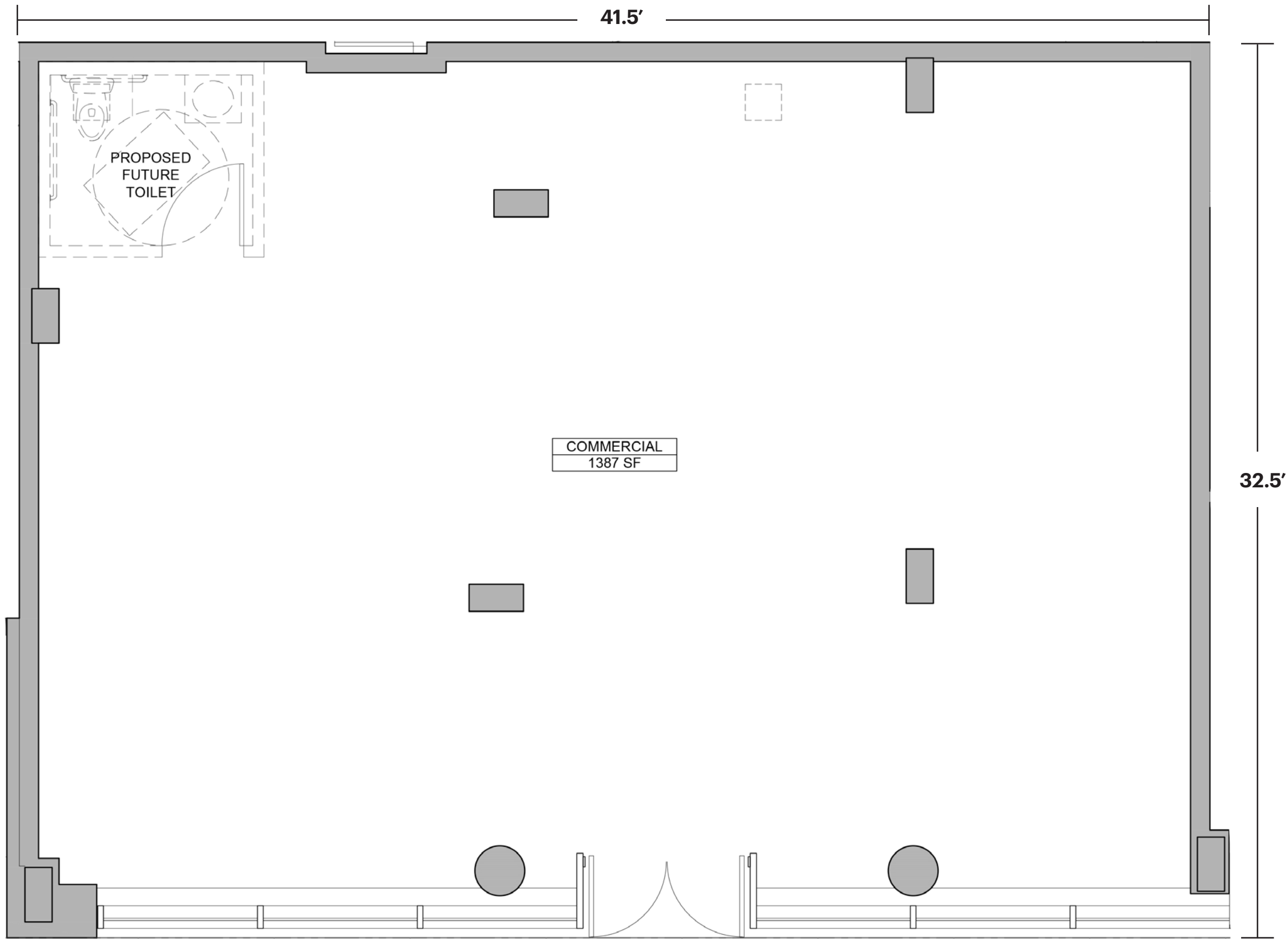
Restaurant Ready



RIPCO
REAL ESTATE

SPACE DETAILS

GROUND FLOOR



SIZE
1,387 SF

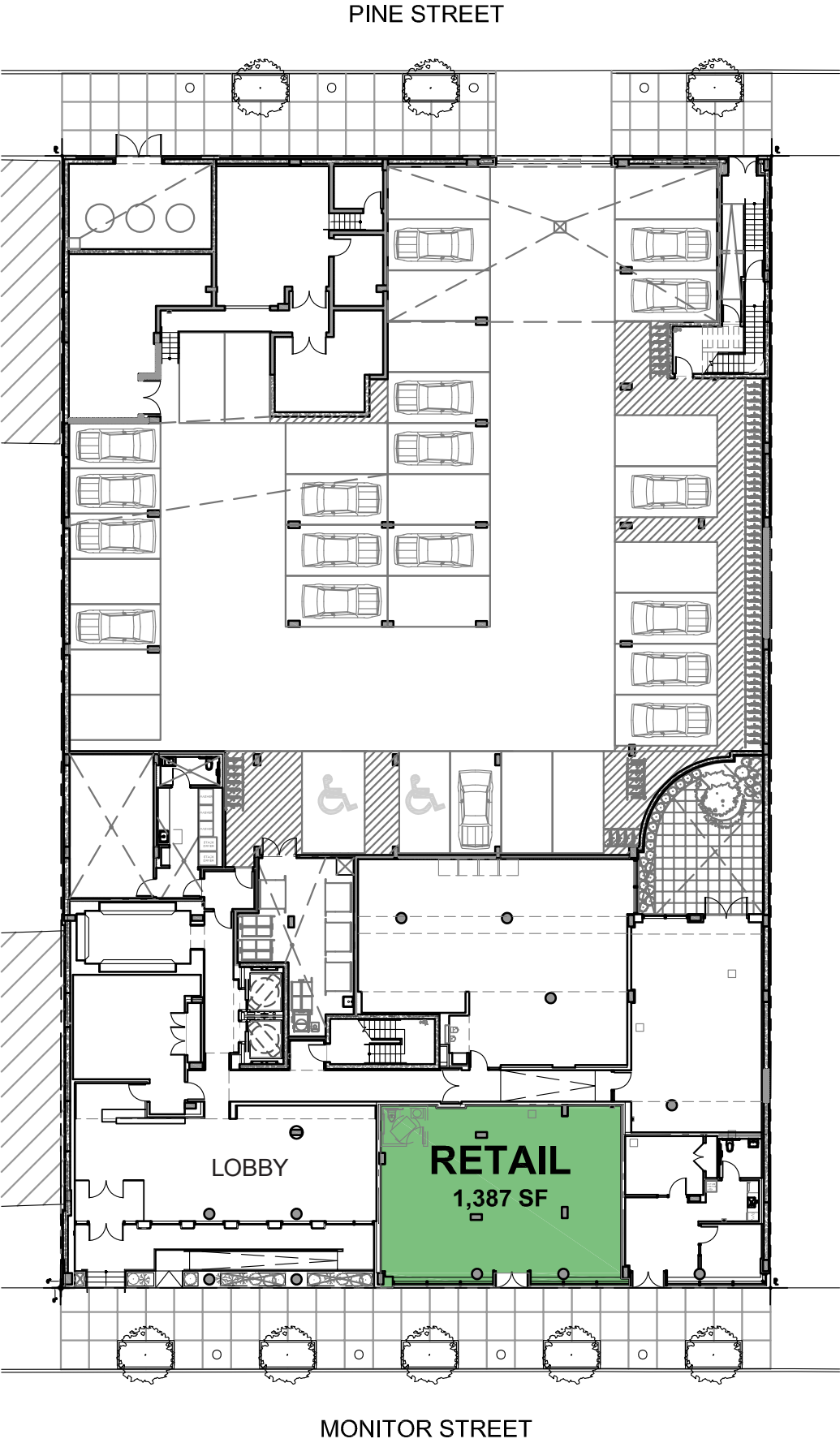
NNN
TBD

NEIGHBORS
The Grind General Store, River Mart, Ion-Performance, Mordi's Sandwich Shop, Cafe Lafayette, Ace Hardware, Dunkin, Advanced Auto Parts, Popeye's, KFC, McDonald's, Crossfit, Papa John's, Domino's, Bank of America

RENT
Negotiable

SPACE DETAILS

GROUND FLOOR



ADDITIONAL PHOTOS



DEMOGRAPHICS



.25 MILE RADIUS

POPULATION
3,897
HOUSEHOLDS
1,726
MEDIAN AGE
35.2
COLLEGE GRADUATES (Bachelor's +)
1,959 - 66.7%

TOTAL BUSINESSES
42
TOTAL EMPLOYEES
748
TOTAL DAYTIME POPULATION
2,436
AVERAGE HOUSEHOLD INCOME
\$104,346

.5 MILE RADIUS

POPULATION
9,218
HOUSEHOLDS
3,860
MEDIAN AGE
34.9
COLLEGE GRADUATES (Bachelor's +)
3,027 - 46.7%

TOTAL BUSINESSES
213
TOTAL EMPLOYEES
6,002
TOTAL DAYTIME POPULATION
10,681
AVERAGE HOUSEHOLD INCOME
\$85,721

1 MILE RADIUS

POPULATION
58,965
HOUSEHOLDS
27,043
MEDIAN AGE
34.7
COLLEGE GRADUATES (Bachelor's +)
28,289 - 63.7%

TOTAL BUSINESSES
1,482
TOTAL EMPLOYEES
31,869
TOTAL DAYTIME POPULATION
58,216
AVERAGE HOUSEHOLD INCOME
\$161,133

3 MILE RADIUS

POPULATION
362,056
HOUSEHOLDS
152,469
MEDIAN AGE
34.4
COLLEGE GRADUATES (Bachelor's +)
156,202 - 58.4%

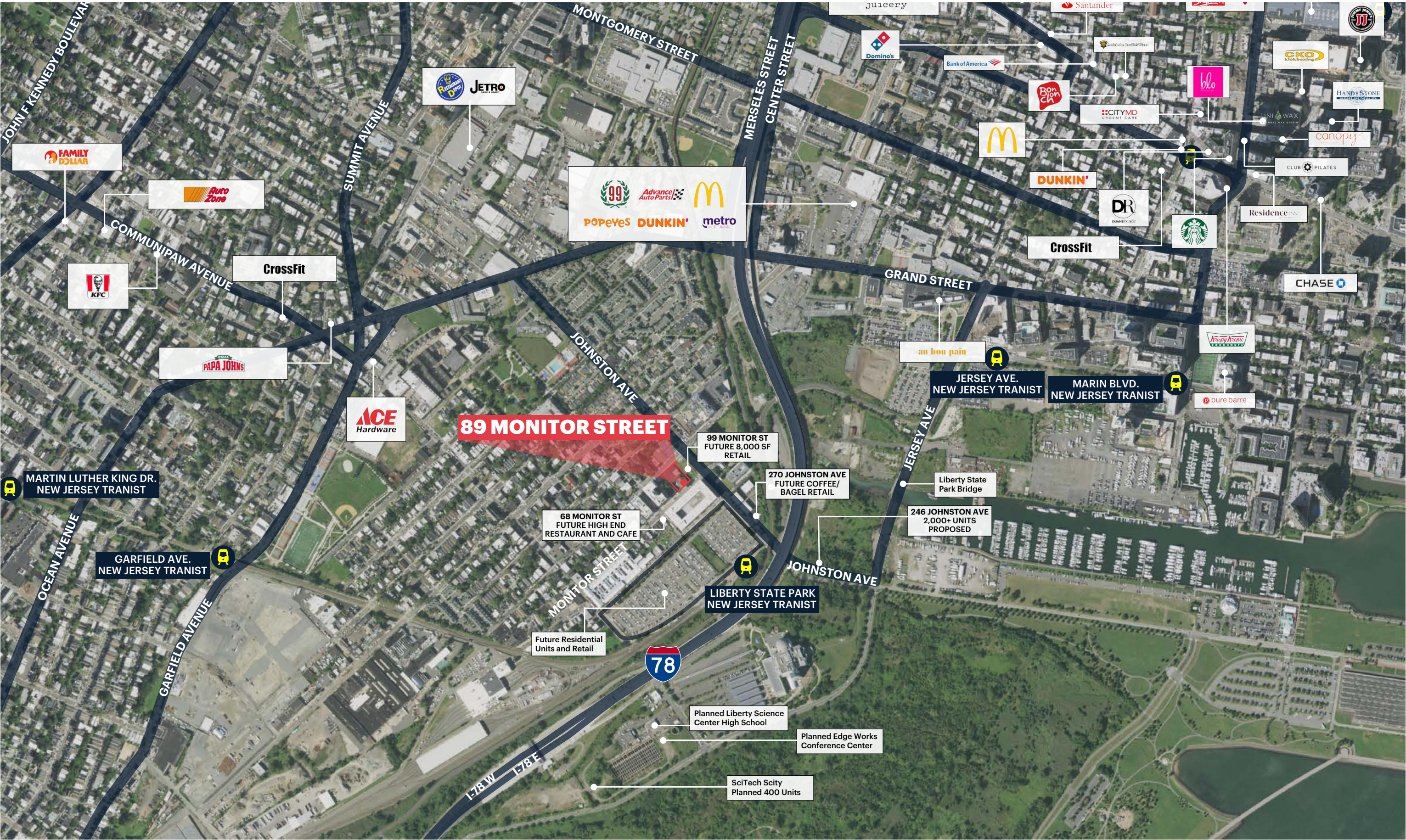
TOTAL BUSINESSES
9,174
TOTAL EMPLOYEES
181,617
TOTAL DAYTIME POPULATION
352,978
AVERAGE HOUSEHOLD INCOME
\$154,785

*2024 estimates

AERIAL ZOOM MAP



AERIAL MAP





CONTACT EXCLUSIVE AGENTS

LISA RICCA

lricca@ripconj.com
201.636.7449

FLORIAN SUSERMAN

fsuserman@ripconj.com
201.777.2301

RIPCO
REAL ESTATE

611 River Drive
3rd Floor
Elmwood Park, NJ 07407
201.777.2300

Please visit us at ripconj.com for more information

This information has been secured from sources we believe to be reliable, but we make no representations as to the accuracy of the information. References to square footage are approximate. Buyer must verify the information and bears all risk for any inaccuracies.