



M E R I D I A N

147 S. CHERRY STREET, SUITE 200 | WINSTON-SALEM, NC 27101 | P 336.722.1986 | F 336.723.3173 | MERIDIANREALTY.COM




Free Standing Retail Building

535 Nelson Street

Kernersville, NC 27284



Former free standing Lowes Food available in Piney Grove Plaza, other Tenants in the shopping center include Subway, Jackson Hewitt and Amalfi's Pizza. Located in a prime retail corridor, nearby businesses include Dollar Tree, Walgreens, AutoZone, Sonic, Grease Monkey and more. This flexible floor plan allows for a multitude of users.

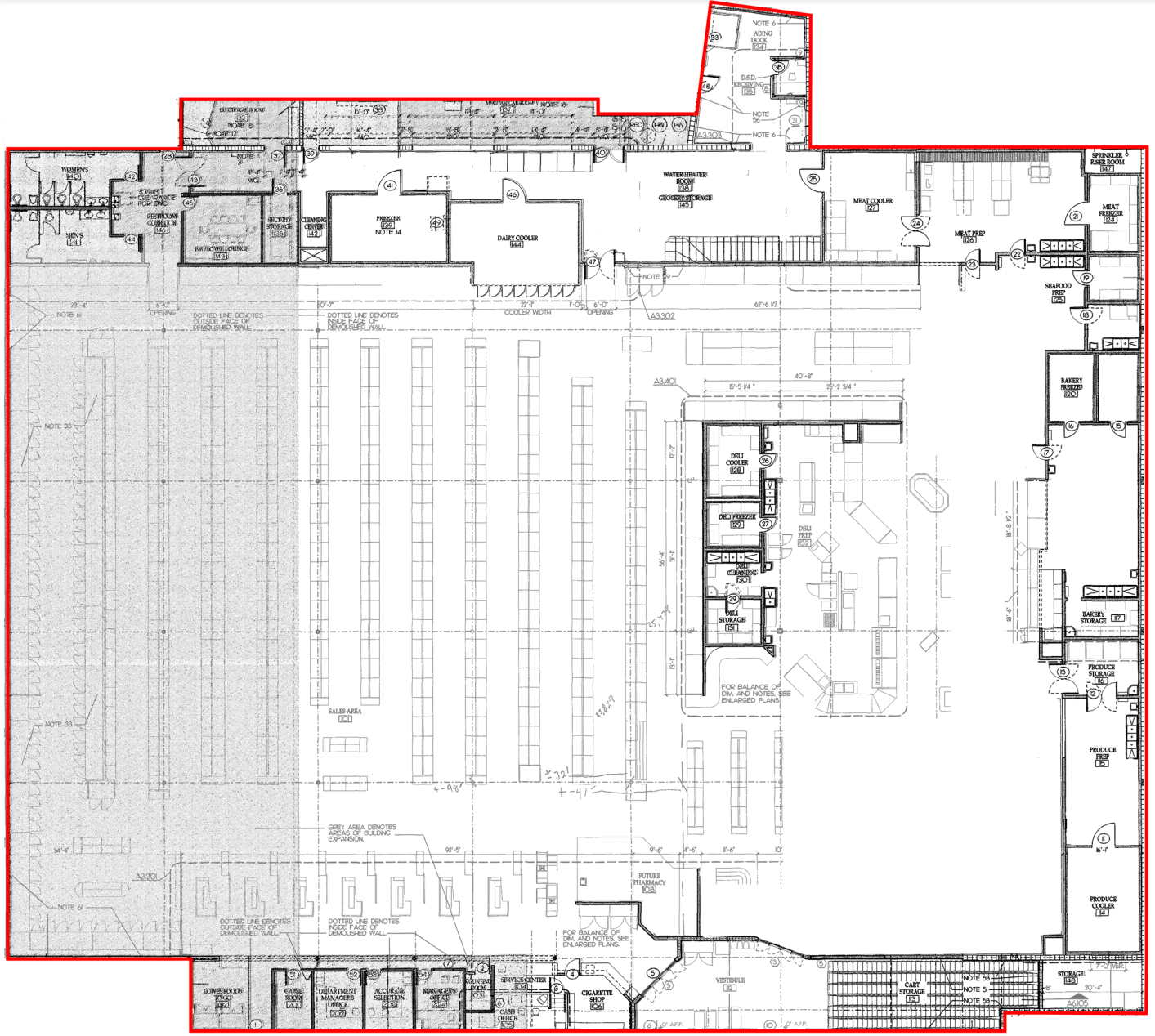
	Demographics		
	1mi	3mi	5mi
 Population	6,399	28,231	61,720
 Household	2,955	12,403	25,624
 Household Income	\$74,887	\$93,756	\$102,690

For more information:

William T. Bartholomew, Jr., CCIM
William@meridianrealty.com
336.480.2335

FOR SALE: \$3,300,000.00
FOR LEASE: \$8.00 PSF NNN

Floorplan



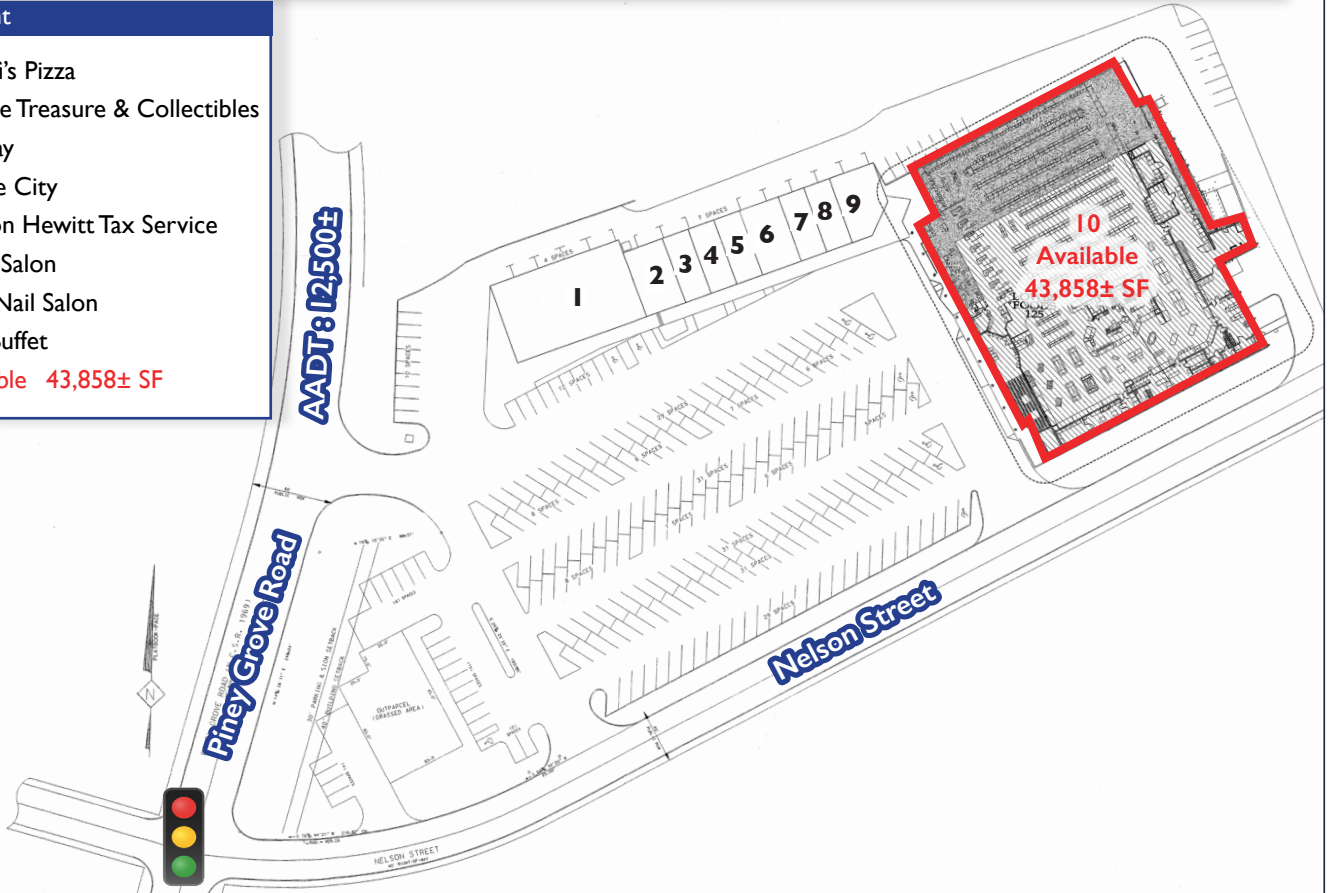
Entrance



Piney Grove Plaza Site Plan

Suite Tenant

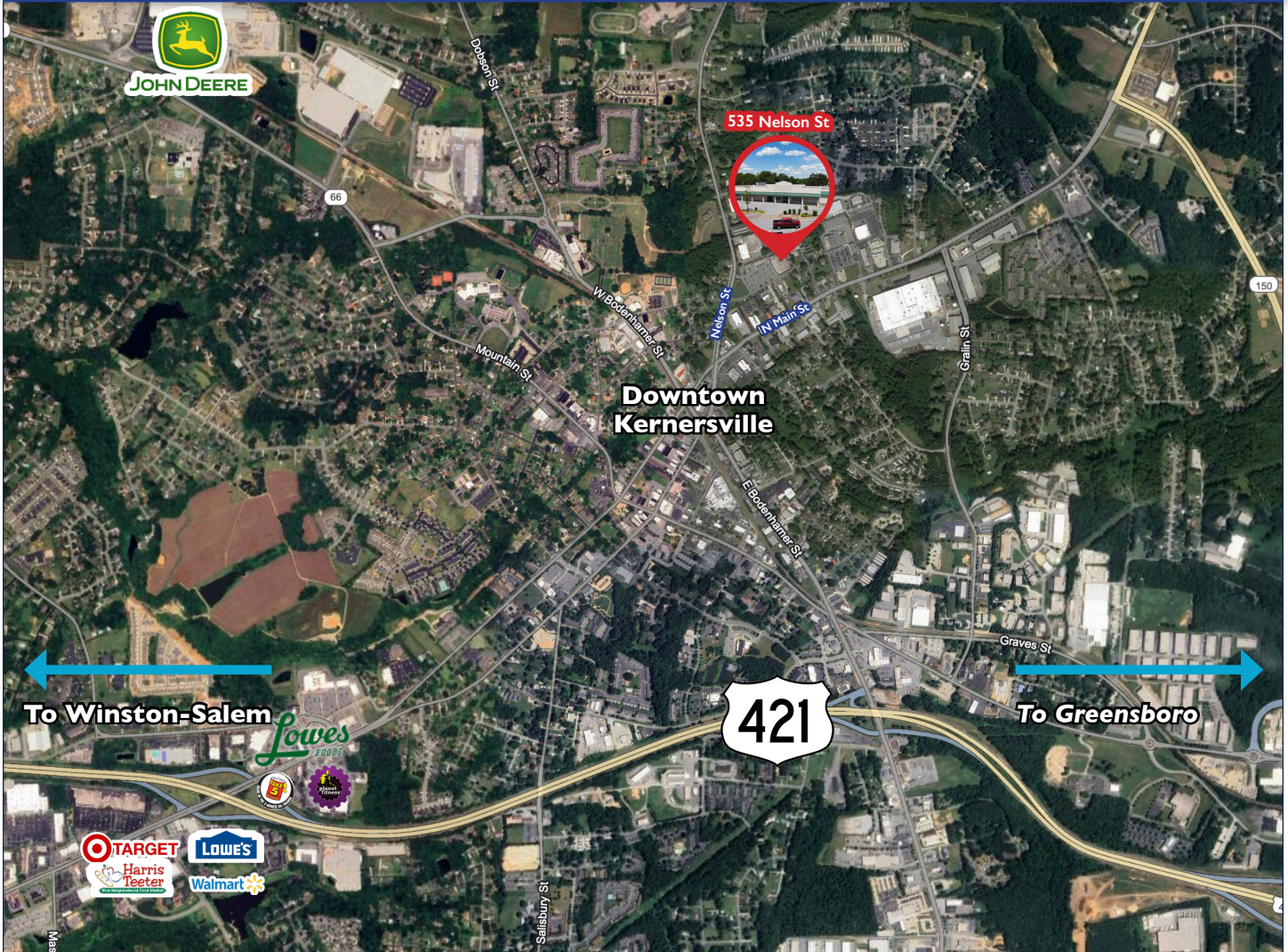
- 1 Amalfi's Pizza
- 2 Unique Treasure & Collectibles
- 3 Subway
- 4 Smoke City
- 5 Jackson Hewitt Tax Service
- 6 Gloss Salon
- 7 Lynn Nail Salon
- 8/9 Lin's Buffet
- 10 Available 43,858± SF



Bird's Eye Aerial



AERIAL



Property Details

- 43,858± SF
- Former Lowes Food
- Zoned HB
- For Sale: \$3,300,000.00
- For Lease: \$8.00 PSF NNN



No warranty or representation (express or implied) is made as to the accuracy or completeness of the information set forth herein. All information is submitted subject to errors, omissions, change of price, prior lease or sale, and withdrawal without notice. All marketing material produced by the Meridian Realty Group is proprietary. Any reproduction is expressly prohibited.



THE MERIDIAN REALTY GROUP | 147 S. CHERRY STREET, SUITE 200 | WINSTON-SALEM, NC 27101

P 336.722.1986 | F 336.723.3173