



FOR SALE

1400 INGHAM STREET

PITTSBURGH, PA 15212

OXFORD
REALTY SERVICES, INC.

PROPERTY DESCRIPTION

BUILDING SIZE

9,995 SF - 2-Story Main Building

- 5,100 SF - Upper Level
- 4,895 SF - Lower Level

PROPERTY HIGHLIGHTS

- 6.5± acre site within Pittsburgh city limits, offering ample space and flexibility for expansion or future development
- The property includes three buildings: the main Career Development Center, a modernized two-story auxiliary building, and a free-standing garage/warehouse with three drive-in doors, offering versatile space for operations, training, storage, or other uses
- Ample on-site parking (102 spaces) to support a variety of high-traffic uses such as educational, medical, or community services, something that's often limited in urban settings
- Located approximately 10 minutes from downtown Pittsburgh, offering convenient access to city amenities.
- Campus-like setting ideal for institutional buyers or organizations seeking a self-contained environment
- Situated in a vibrant neighborhood with a strong sense of community, ideal for organizations focused on outreach or public services

SALE PRICE

\$990,000.00



1400 INGHAM STREET

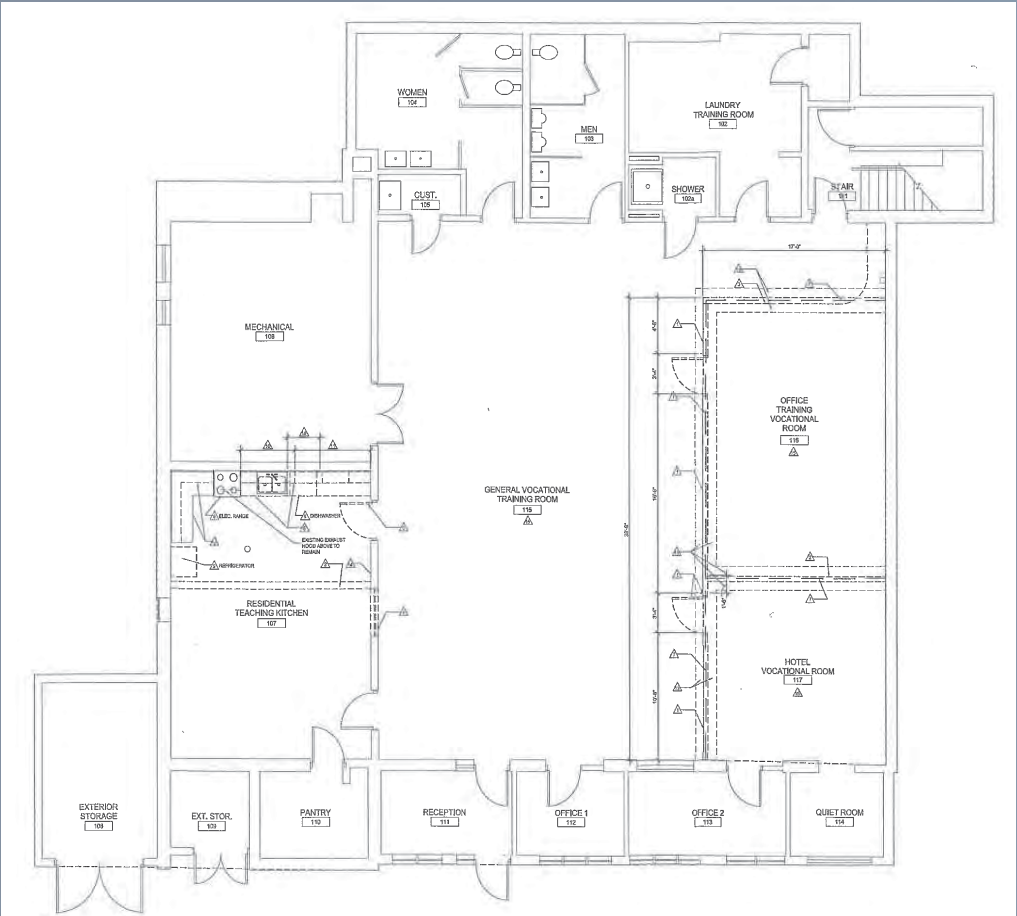
BUILDING PHOTOS



1400 INGHAM STREET

FLOOR PLANS

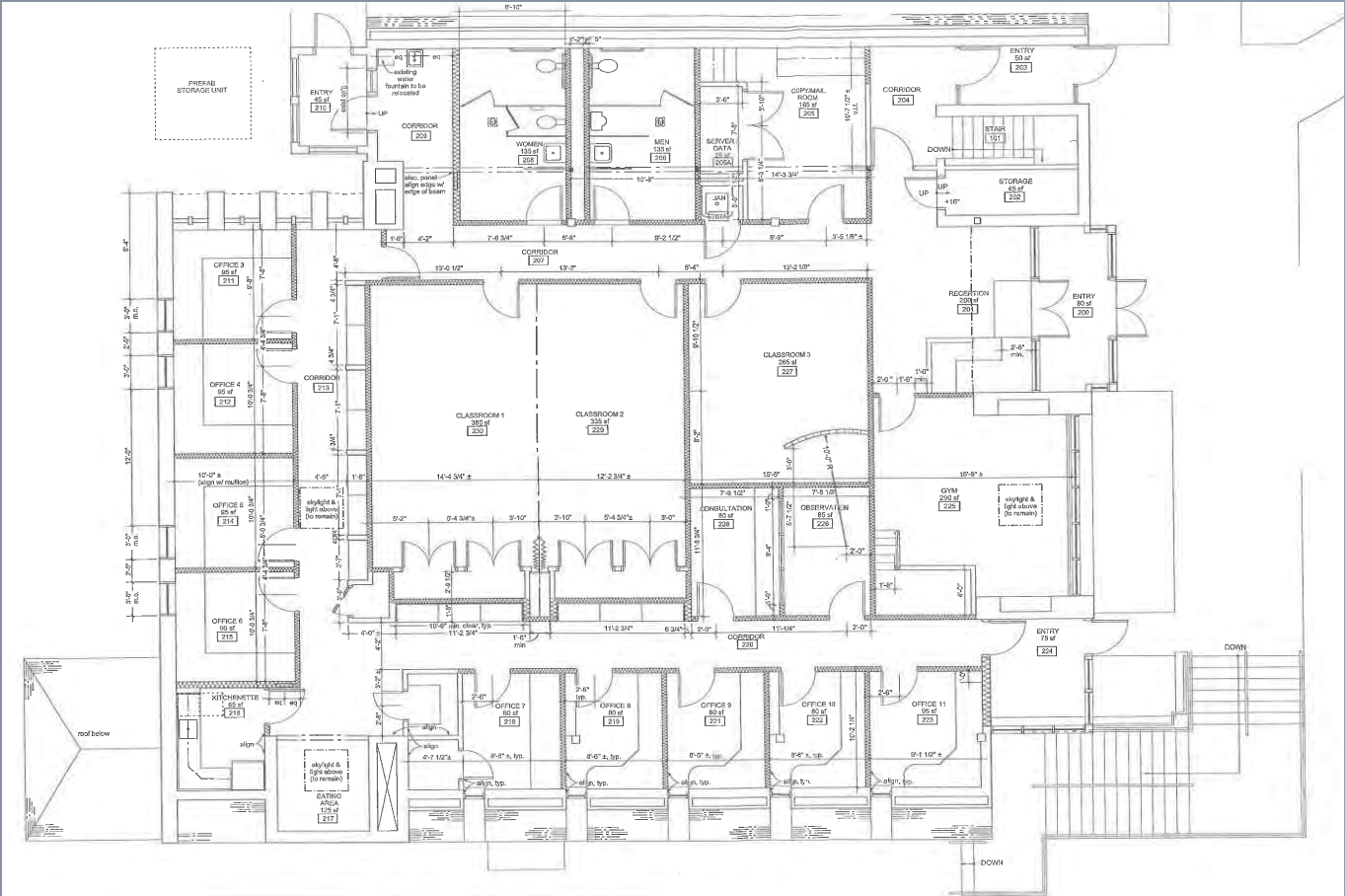
LOWER LEVEL - OFFICE BUILDING



1400 INGHAM STREET

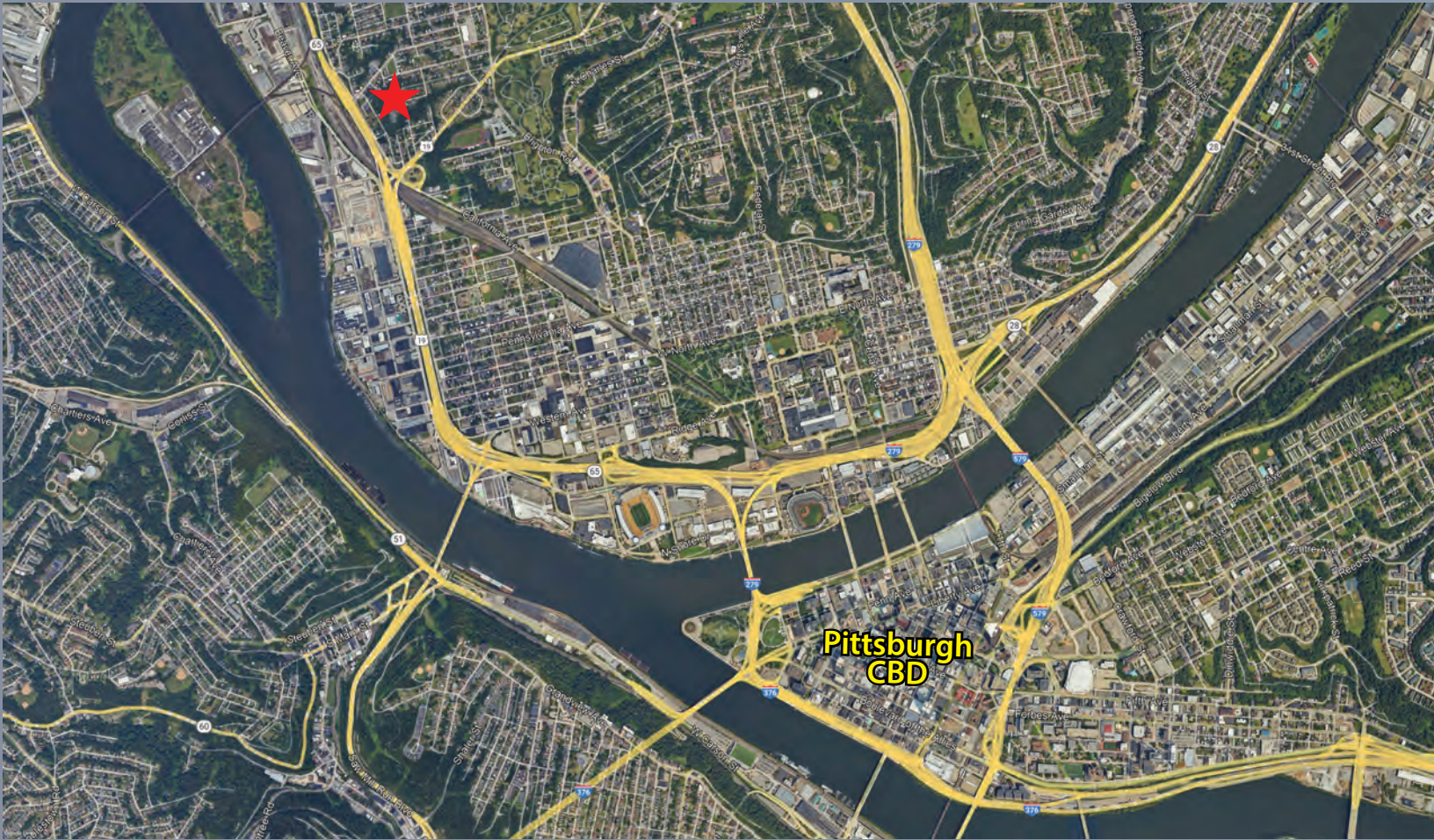
FLOOR PLANS

UPPER LEVEL - OFFICE BUILDING



1400 INGHAM STREET

PROPERTY LOCATION



DEMOGRAPHICS

	3-MILES	5-MILES
Population	119,749	301,681
Average HH Income	\$80,957	\$82,223

TRAFFIC COUNTS

10,423 Vehicles Daily.....
California Avenue & Route 19 (Marshall Ave)

1400 INGHAM STREET



JOE TOSI, SIOB
EXECUTIVE VICE PRESIDENT
412-261.0200 – ext. 3471
jtosi@oxfordrealtyservices.com



TAYLOR IABONI
VICE PRESIDENT
412-261.0200 – ext. 3493
tiaboni@oxfordrealtyservices.com

OXFORD
REALTY SERVICES, INC.

For more information or to schedule a tour, please contact: