

THE UTILITIES SHOWN HEREON ARE FOR THE CONTRACTORS CONVENIENCE ONLY. THERE MAY BE OTHER UTILITIES NOT SHOWN ON THESE PLANS. THE ENGINEER ASSUMES NO RESPONSIBILITY FOR THE LOCATIONS SHOWN AND IT SHALL BE THE CONTRACTORS RESPONSIBILITY TO VERIFY ALL UTILITIES WITHIN THE LIMITS OF THE WORK. IF THERE ARE ANY DISCREPANCIES THE ENGINEER MUST BE NOTIFIED. ALL DAMAGE MADE TO EXISTING UTILITIES BY THE CONTRACTOR SHALL BE THE SOLE RESPONSIBILITY OF THE CONTRACTOR.

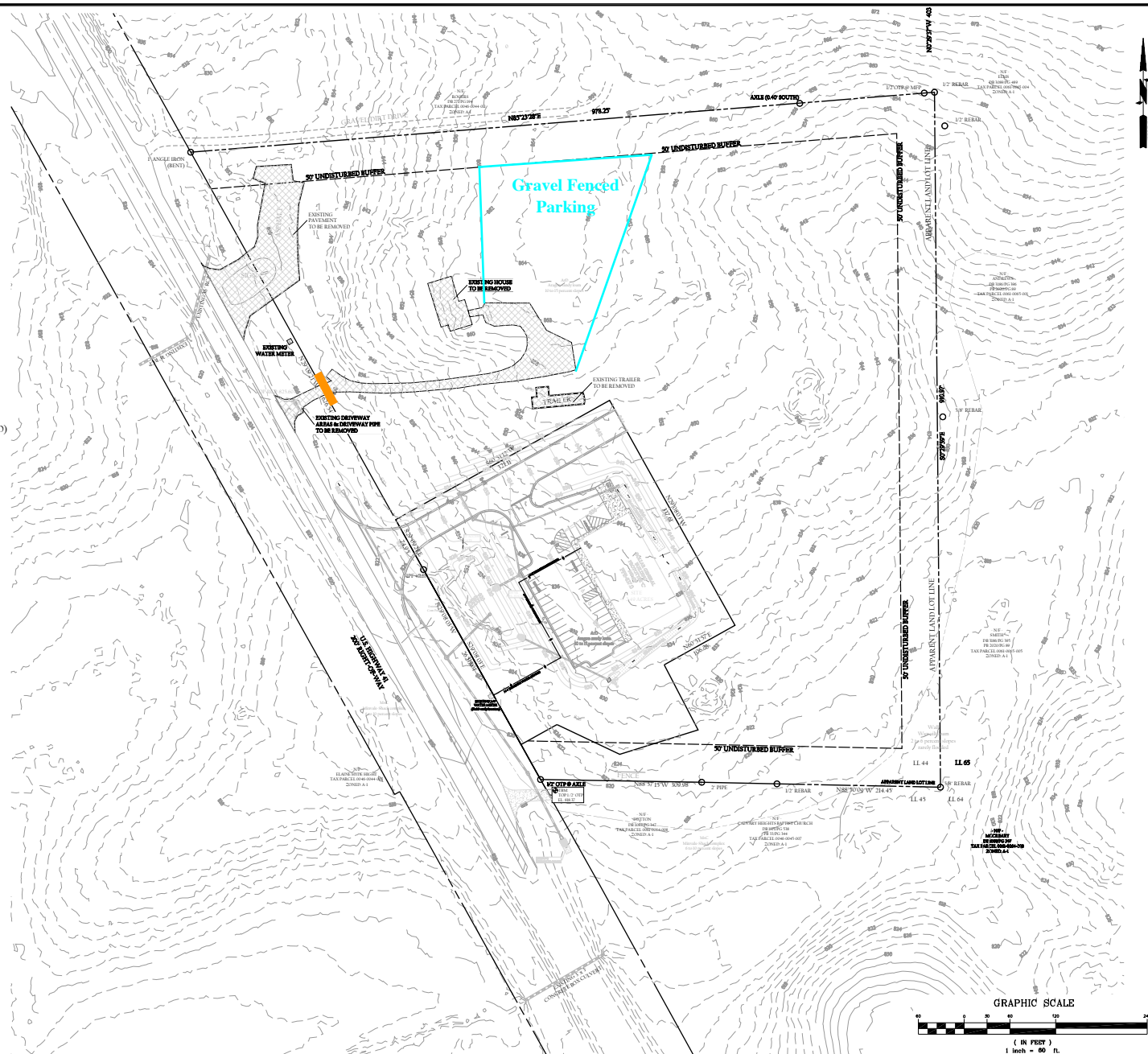
**IF YOU DIG GEORGIA  
CALL US FIRST !**  
1-800-282-7411  
*It's The Law !*

Benjamin Hankins  
770-324-8711

**ELEVATION NOTE**  
TOPOGRAPHIC INFORMATION IS BASED ON A FIELD RUN TOPOGRAPHIC MAP PROVIDED BY  
HARTOW COUNTY GIS. IT IS THE CONTRACTOR'S RESPONSIBILITY TO FIELD VERIFY ALL EXISTING  
AND PROPOSED ELEVATIONS AND GRADES, STORM DRAINS, AND ANY UTILITIES PRIOR TO  
CONSTRUCTION. IF AN DISCREPANCY IS FOUND THEN IT IS THE RESPONSIBILITY OF THE  
CONTRACTOR TO NOTIFY THE ENGINEER.

EROSION CONTROL MEASURES WILL BE MAINTAINED AT ALL TIMES. IF FULL IMPLEMENTATION OF THE APPROVED PLAN DOES NOT PROVIDE EFFECTIVE EROSION CONTROL, ADDITIONAL EROSION CONTROL MEASURES SHALL BE IMPLEMENTED ACCORDING TO THE 'MANUAL FOR EROSION AND SEDIMENT CONTROL IN GEORGIA'.

ArD - Aragon sandy loam, 10 to 15 percent slopes (Group B)  
WaB - Wax silt loam, 2 to 6 percent slopes, rarely flooded (Group D)



STEPHENSON  
ENGINEERING, INC.  
CIVIL ENGINEERING,  
LAND PLANNING &  
DEVELOPMENT CONSULTANTS

1



ENGINEER GSWCC# 00000201

THE HOLDER OF THIS DOCUMENT WAIVES ALL CLAIMS AGAINST STEPHENSON ENGINEERING INCORPORATED FOR A UNAUTHORIZED CHANGE OR REDUCTION OF THIS DOCUMENT. THIS DOCUMENT IS INSTRUMENT OF SERVICE OF STEPHENSON ENGINEERING INCORPORATED FOR A RETAIN ALL RIGHTS OF CONTRACT, STATUTE AND COPYRIGHT THEREON.

OWNER/DEVELOPER:

Hankins Storage, LLC  
109 Hammond Drive  
Canton, GA 30114  
Phone (770) 324-8711  
hr Contacts Benjamin Hankins  
mailto:benhank@hankinsstorage.com

Highway 41 Outdoor Storage

Located in Land Lot 44, 5th Dist, 3rd Sec.  
Barlow County, Georgia

PROJECT  
23-005

DATE  
2-21-2

SHEET TITLE  
Existing  
Conditions

SHEET NO.  
C1.