

NOW LEASING



BUILDING SIGNAGE AVAILABLE

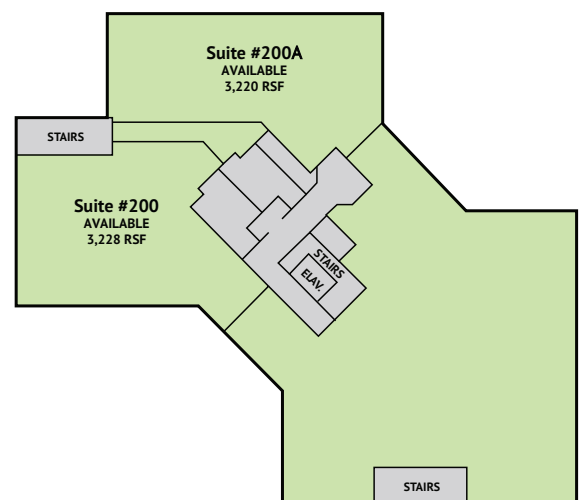
LAKESIDE MEDICAL PLAZA

17001 Lakeside Hills Plaza | Omaha, NE 68130

NOW LEASING suite #200 and #200A at Lakeside Medical Plaza. Both suites are located on floor 2 and are the first building vacancy in years. The medical plaza is adjacent to the CHI Lakeside Campus with visibility from W. Center Road.

Rental rate & tenant improvement allowance are negotiable.

2ND FLOOR



FOR LEASING INFORMATION, PLEASE CONTACT:

Kristen Neumann, Senior Vice President, Leasing
kristen.neumann@nexcoregroup.com
303.710.1909

Current Tenant Mix

Brumm Eye Laser Center (Ophthalmology)
Robert J. Zadalis (General Surgery)
Midwest Gastroenterology
Lakeside Endoscopy