

300 West Vine



Office Space for Lease

General Lease Information:

Building Square Footage:	389,208
Parking Spaces:	272 - Tower 607 - Annex
Storage:	Basement & Annex

Amenities:

- Professional On-Site Management
- 24 Hour Security
- 24 Hour On-Call Maintenance
- Cleaning Service
- After Hour Card Key Access
- Restaurant
- Barber Shop
- Convenient Covered Pedways
- Easy Access to I-75 & I-64
- Convenient to Downtown banks, restaurants, shops, hotels and Rupp Arena



LANGLEY PROPERTIES COMPANY

300 West Vine Street; Ste 2200
Lexington, KY 40507

Contact:

Scott A. Davidson

Phone: (859) 253-2255

Fax: (859) 254-6002

Email: sdavidson@langleyproperty.com

300 W. Vine

6th Floor



1250 SF Available –
can be divided into smaller offices of 250 SF

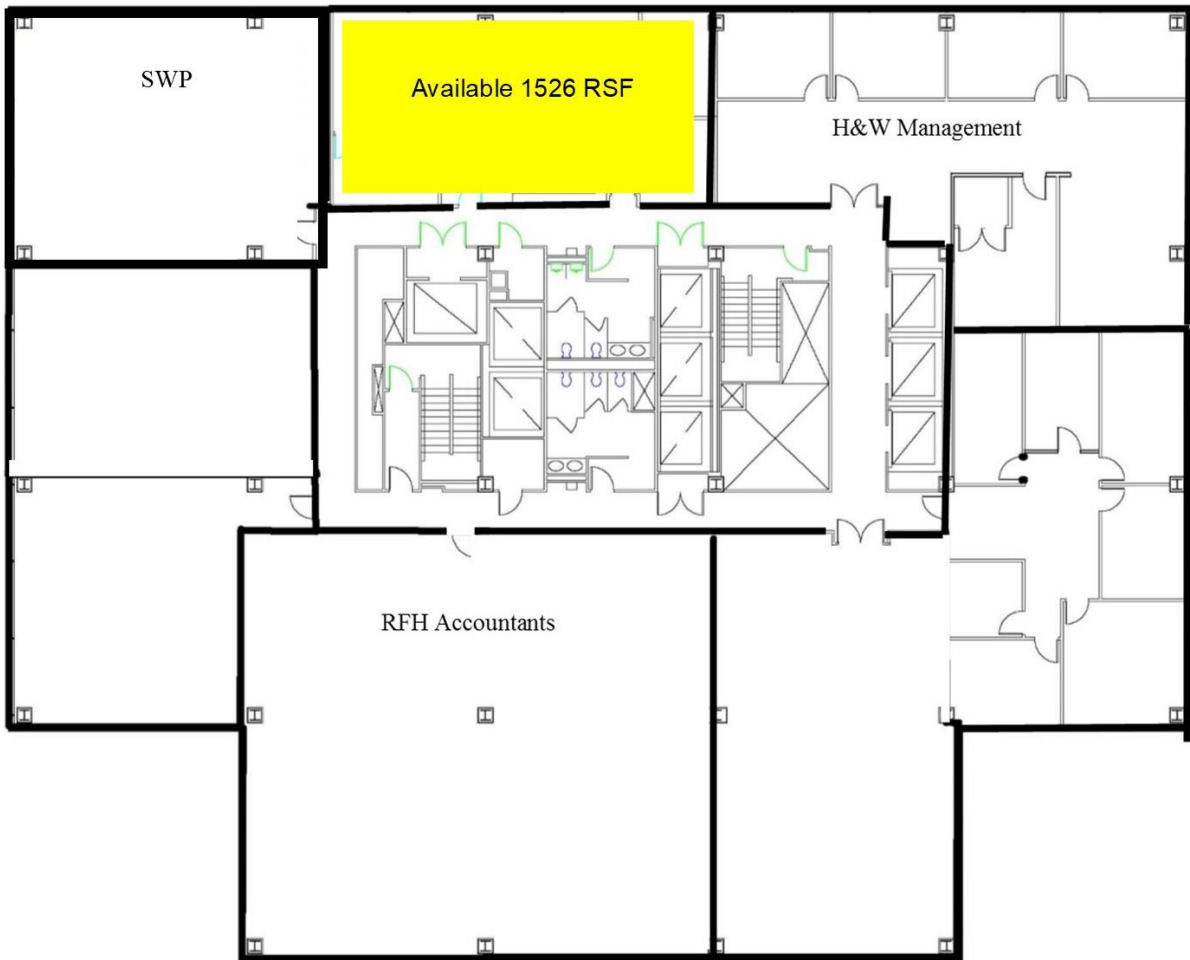
Contact:
Scott A. Davidson
Phone: (859) 253-2255
Fax: (859) 254-6002
Email: sdavidson@langleyproperty.com



LANGLEY PROPERTIES COMPANY

300 W. Vine

8th Floor



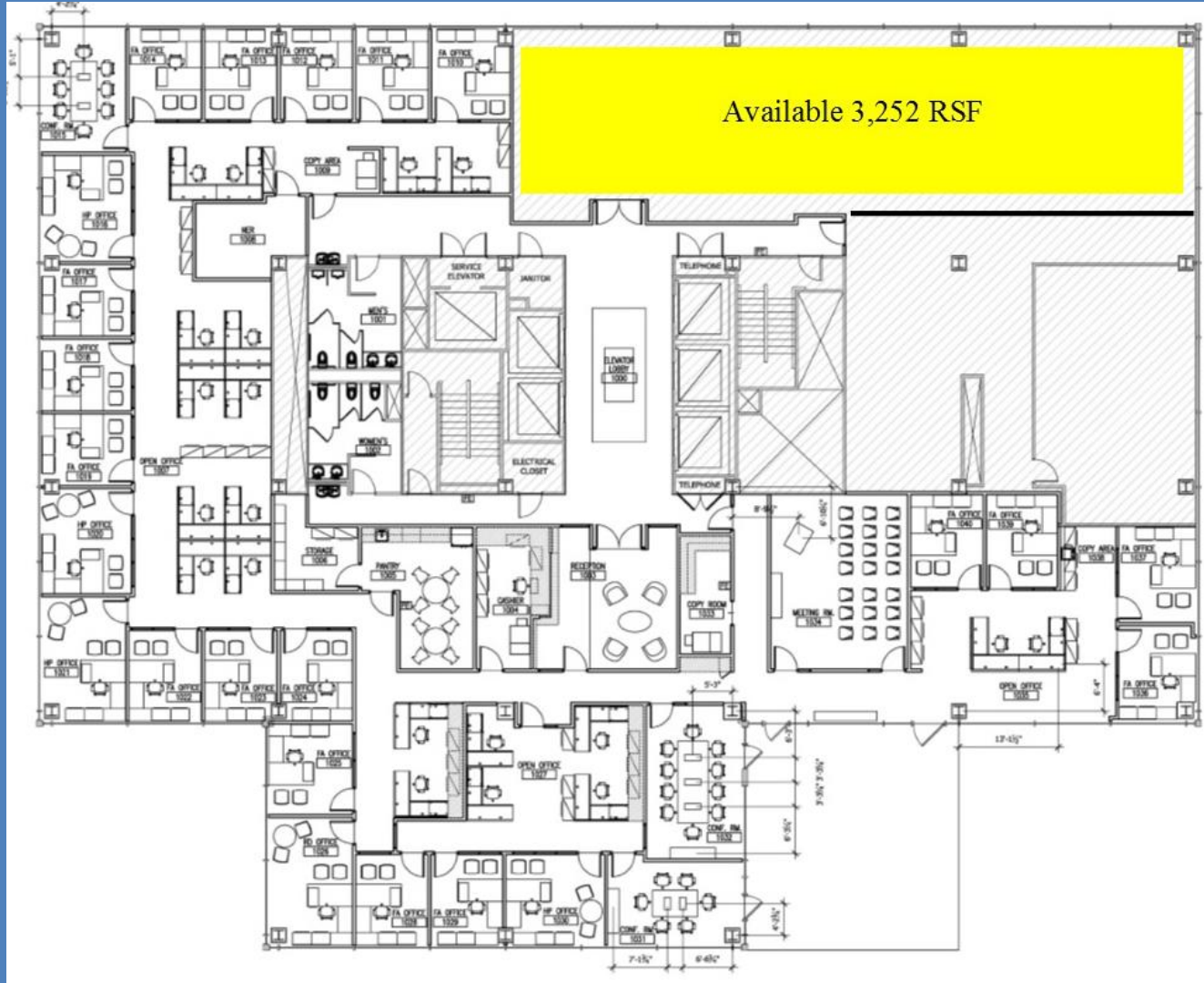
Contact:
Scott A. Davidson
Phone: (859) 253-2255
Fax: (859) 254-6002
Email: sdavidson@langleyproperty.com



LANGLEY PROPERTIES COMPANY

300 West Vine

10th Floor



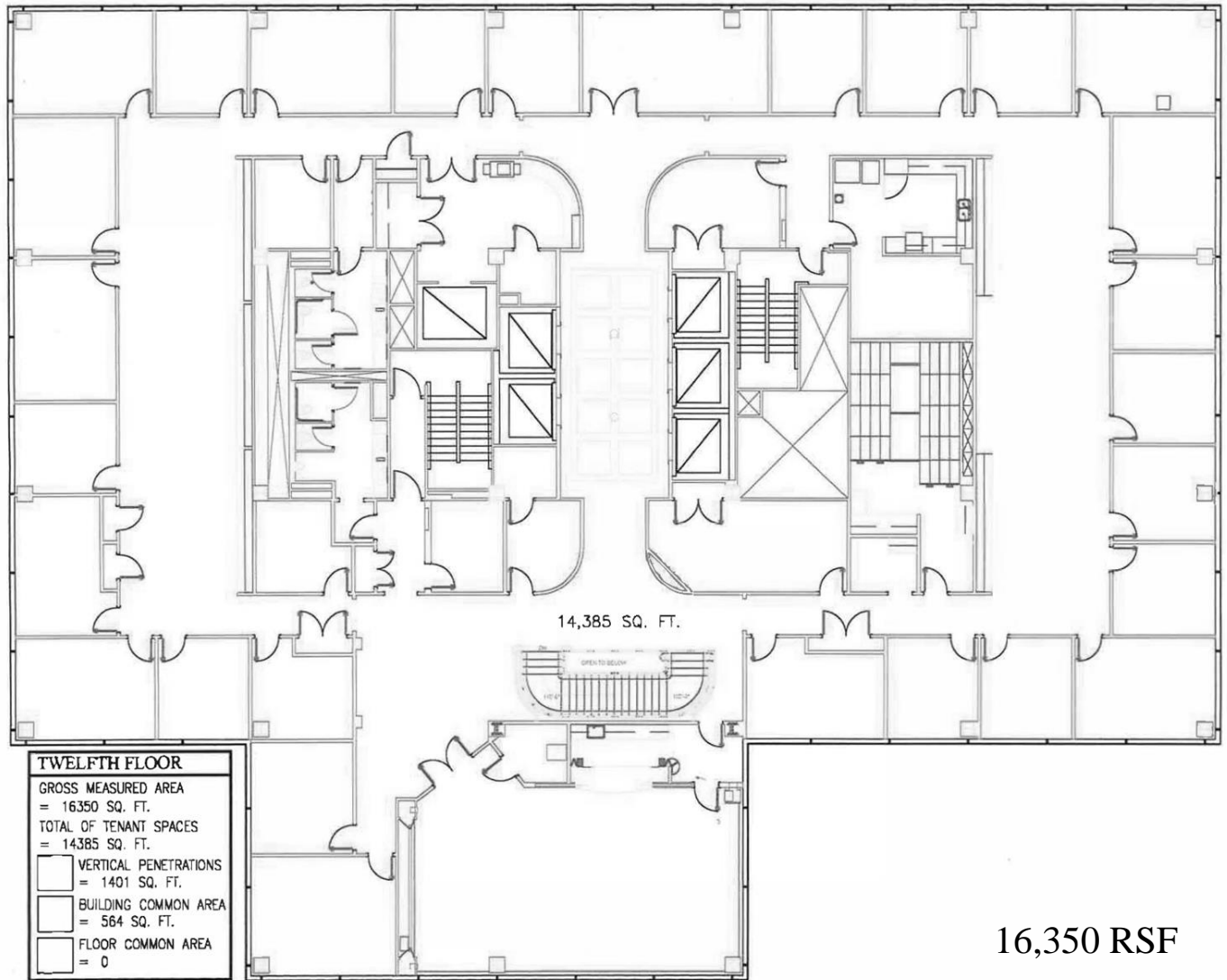
Contact:
Scott A. Davidson
Phone: (859) 253-2255
Fax: (859) 254-6002
Email: sdavidson@langleyproperty.com



LANGLEY PROPERTIES COMPANY

300 W. Vine

12th Floor



300 WEST VINE - TWELFTH FLOOR PLAN

Contact:

Scott A. Davidson

Phone: (859) 253-2255

Fax: (859) 254-6002

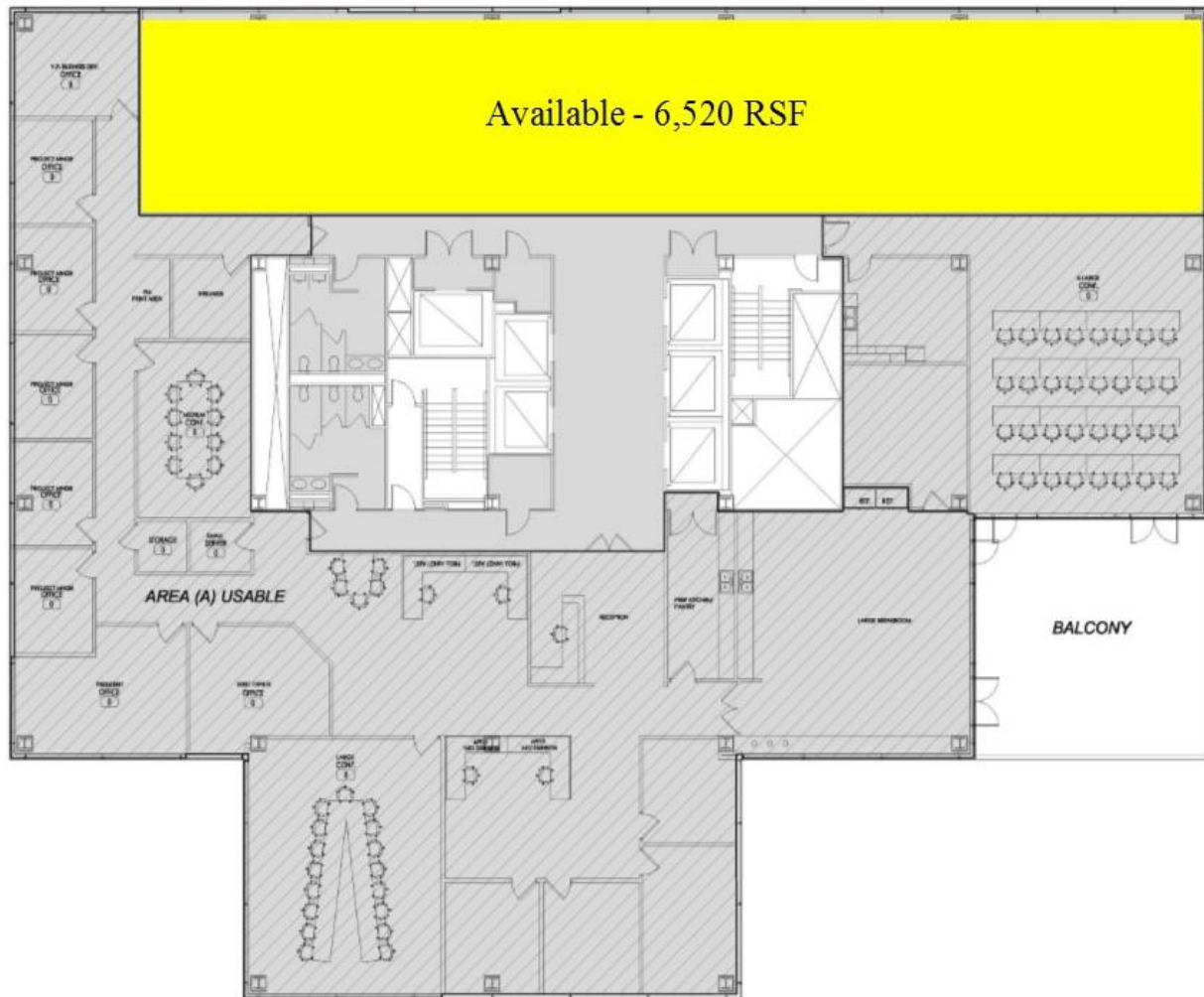
Email: sdavidson@langleyproperty.com



LANGLEY PROPERTIES COMPANY

300 West Vine

14th Floor



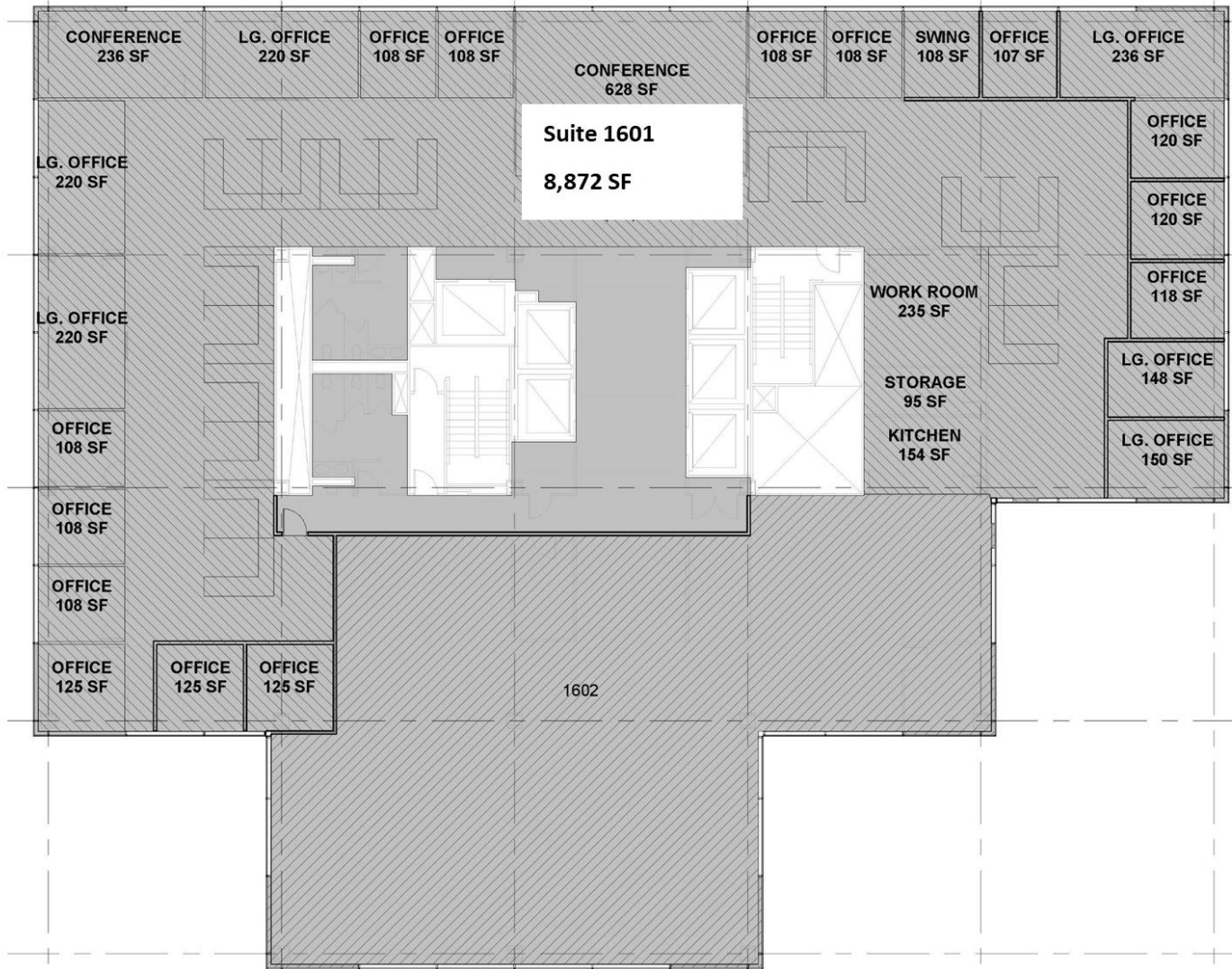
Contact:
Scott A. Davidson
Phone: (859) 253-2255
Fax: (859) 254-6002
Email: sdavidson@langleyproperty.com



LANGLEY PROPERTIES COMPANY

300 West Vine

16th Floor



Contact:
Scott A. Davidson
Phone: (859) 253-2255
Fax: (859) 254-6002
Email: sdavidson@langleyproperty.com

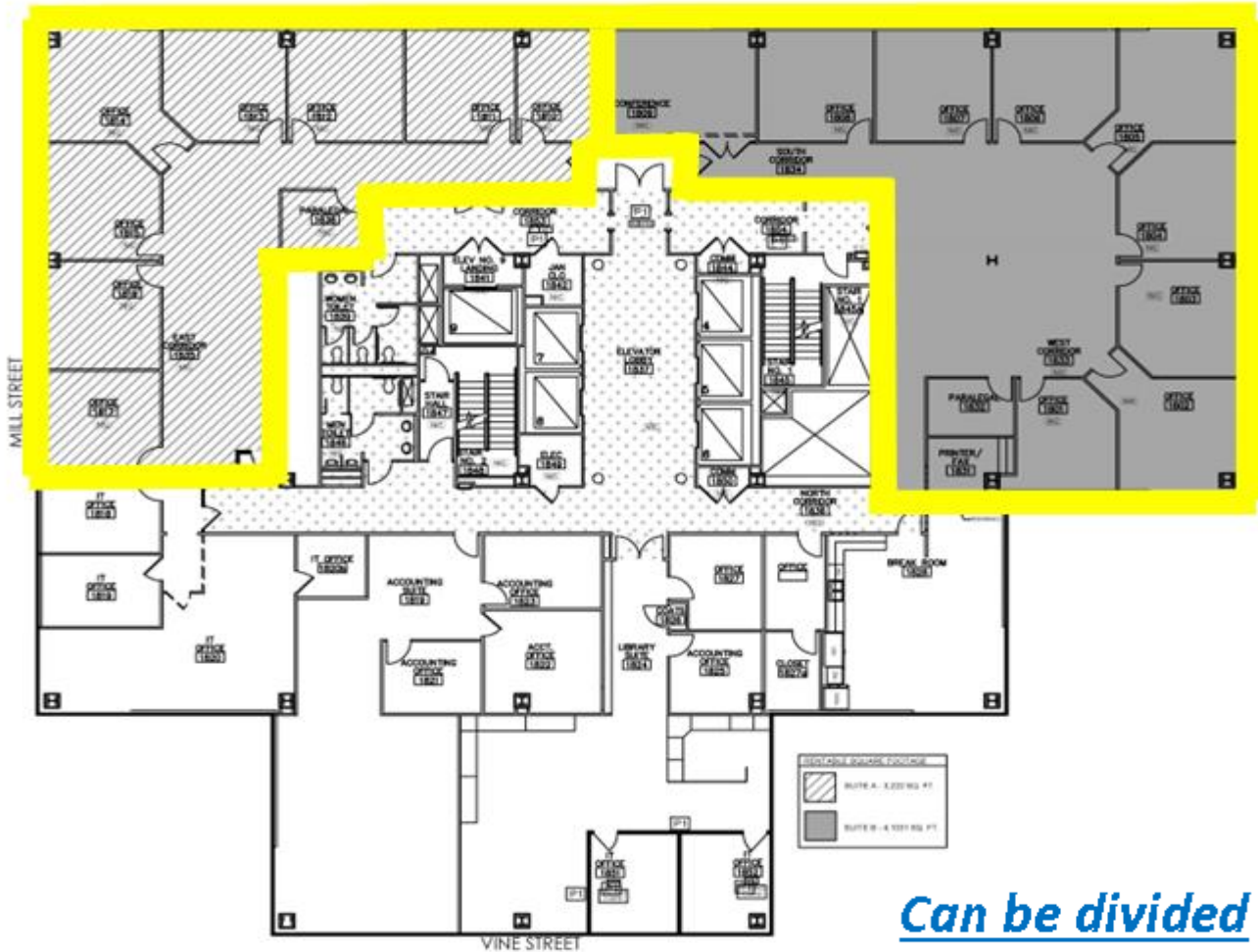


LANGLEY PROPERTIES COMPANY

300 West Vine

18th Floor

7,355 SF Available



Contact:
Scott A. Davidson
Phone: (859) 253-2255
Fax: (859) 254-6002
Email: sdavidson@langleyproperty.com



LANGLEY PROPERTIES COMPANY