



0.22±
ACRES

CORRINE DR AADT: 11,100±

LONG-TERM LAND LEASE

2901 Corrine Drive, Orlando, FL 32803

COMING 1Q 2024

PROPERTY HIGHLIGHTS

- **New to market**
- Rare commercial opportunity along prestigious Corrine corridor
- Located in high demand Audubon Park Garden District
- Approved for a variety of commercial uses
- Excellent signage opportunities
- Within walking distance to area restaurants and shopping



ASKING RATE:
Contact broker for details



TOTAL LAND AREA:
0.22±



TRAFFIC COUNTS:
On Corrine Dr:
11,100± vehicles/day
On N Mills Ave:
28,000± vehicles/day



DAMIEN MADSEN
dmadsen@harbertrealty.com | 407.256.2844

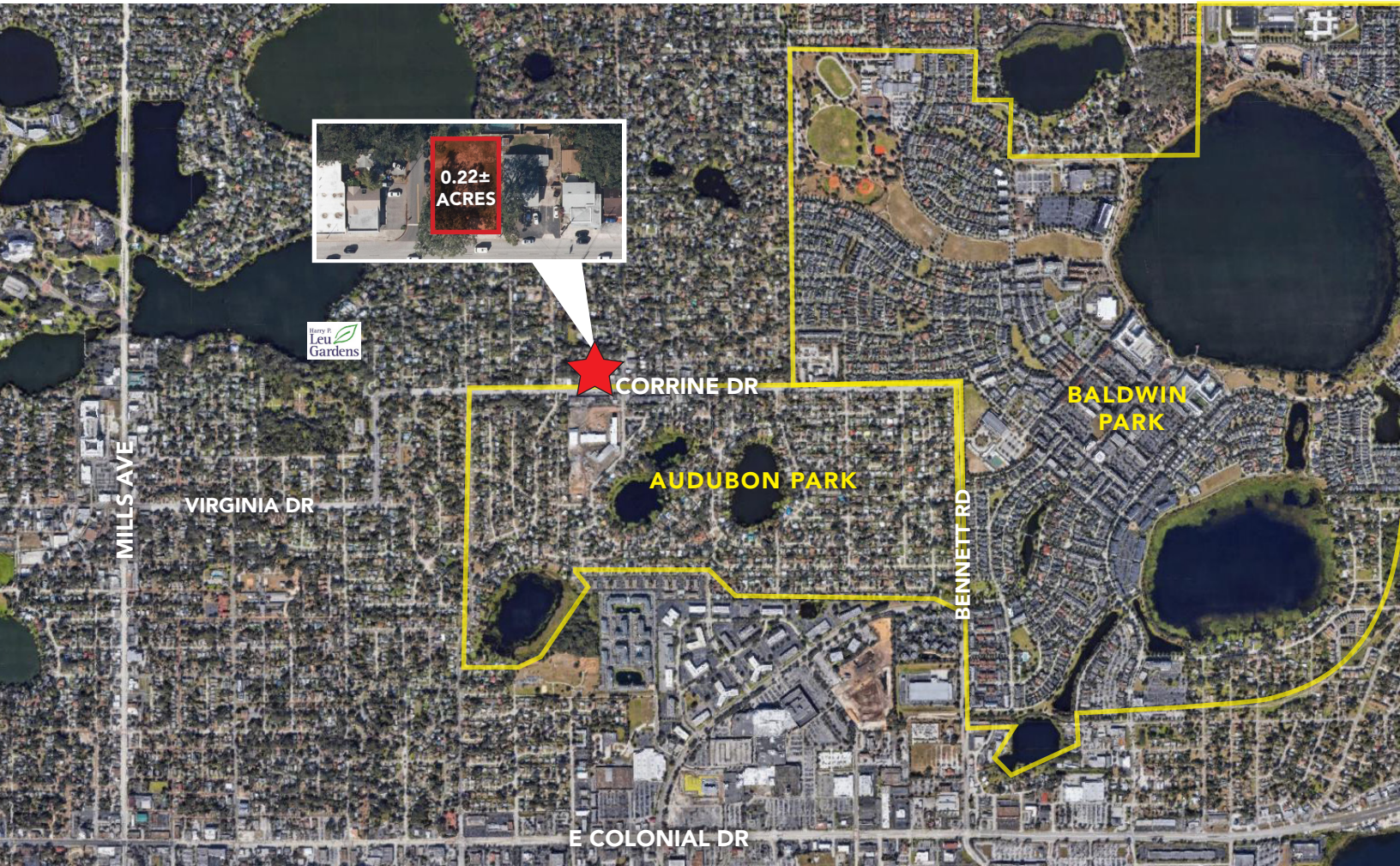
For More Information: HarbertRealty.com
400 S Park Ave, Suite 225, Winter Park, FL 32789

The information contained herein has been obtained from sources deemed reliable, however, HRS makes no guarantees, warranties or representation as to its completeness or accuracy thereof. The presentation of this property is submitted subject to errors, omissions, change of price or conditions, prior to sale or lease or withdrawal without notice.

LONG-TERM LAND LEASE

2901 Corrine Drive, Orlando, FL 32803

AREA OVERVIEW



WITHIN CLOSE PROXIMITY TO 2901 CORRINE DRIVE



DAMIEN MADSEN
dmadsen@harbertrealty.com | 407.256.2844

For More Information: HarbertRealty.com
400 S Park Ave, Suite 225, Winter Park, FL 32789