

Columbia Warehouse

3400 NE Columbia Blvd
Portland, OR 97202

FOR SALE



PROPERTY HIGHLIGHTS

Signage on Columbia Blvd

Great exposure on NE Columbia Blvd & NE Lombard Street

Power (west bays): 120/240v single phase, 200 amp

Power (east bays): 120/240v 3 phase, 200 amp

2 Driveway aprons onto Columbia Blvd

Wet sprinkler system

Reinforced concrete tilt construction

Truck Scale

OFFERING SUMMARY

Available SF:	Shell:	36,015 SF
	Office:	6,111 SF
	Dock:	1,800 SF
	GBA:	40,866 SF

Lot Size: 2.14 Acres

Clear Height: 24'

Dock Loading: 5 (24') doors on loading dock grade level access

Grade Loading: 2 doors

Year Built: 1970

Zoning: IG2H

Erich Kasch

360-737-1900

erich@monolithdevelopment.com

Columbia Warehouse

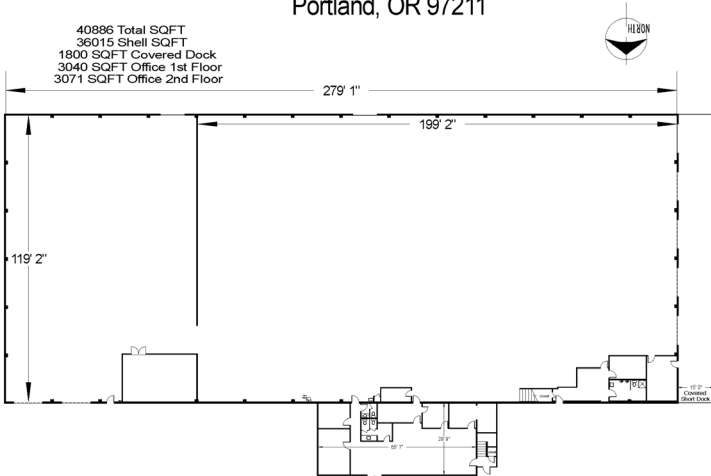
3400 NE Columbia Blvd
Portland, OR 97202

FOR SALE

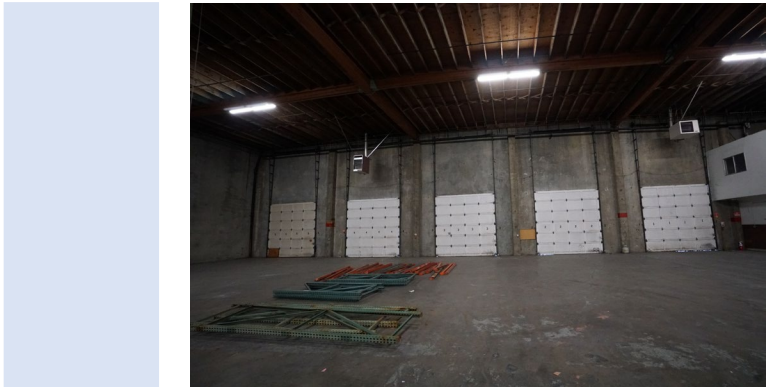


3400 NE Columbia Blvd.
Portland, OR 97211

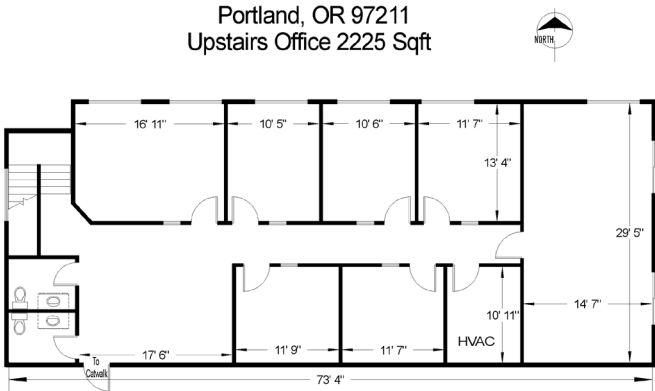
40886 Total SQFT
36015 Shell SQFT
1800 SQFT Covered Dock
3040 SQFT Office 1st Floor
3071 SQFT Office 2nd Floor



The information contained herein was obtained either from the Owner or other parties we consider reliable. We have no reason to doubt its accuracy, however we do not guarantee it.



3400 NE Columbia Blvd.
Portland, OR 97211
Upstairs Office 2225 Sqft



The information contained herein was obtained either from the Owner or other parties we consider reliable. We have no reason to doubt its accuracy, however we do not guarantee it.



Erich Kasch
360-737-1900
erich@monolithdevelopment.com

