



RETAIL SPACE

SOMERSET, NJ

REDEVELOPMENT SITE

1213 NJ-27

SIZE

±1,848 SF

ASKING RENT

Upon Request

ZONING: GB GENERAL BUSINESS

Permitted Uses:

Retail, Restaurants, Funeral Home, Laundromat and Dry Cleaning, Printing, Offices

Conditional Uses:

Places of Worship, Automobile Service Station

LOT SIZE

0.57 Acres

TERM

Negotiable

COMMENTS

High visibility site

Signalized intersection

Very convenient to business and residents

Nearby retailers include, Stop & Shop, Bank of America, Dunkin', Exxon, Subaru and Taco Bell

CONTACT EXCLUSIVE AGENTS

MICHAEL HORNE

mhorne@ripconj.com

201.351.8782

STEVEN WINTERS

swinters@ripconj.com

201.335.6050

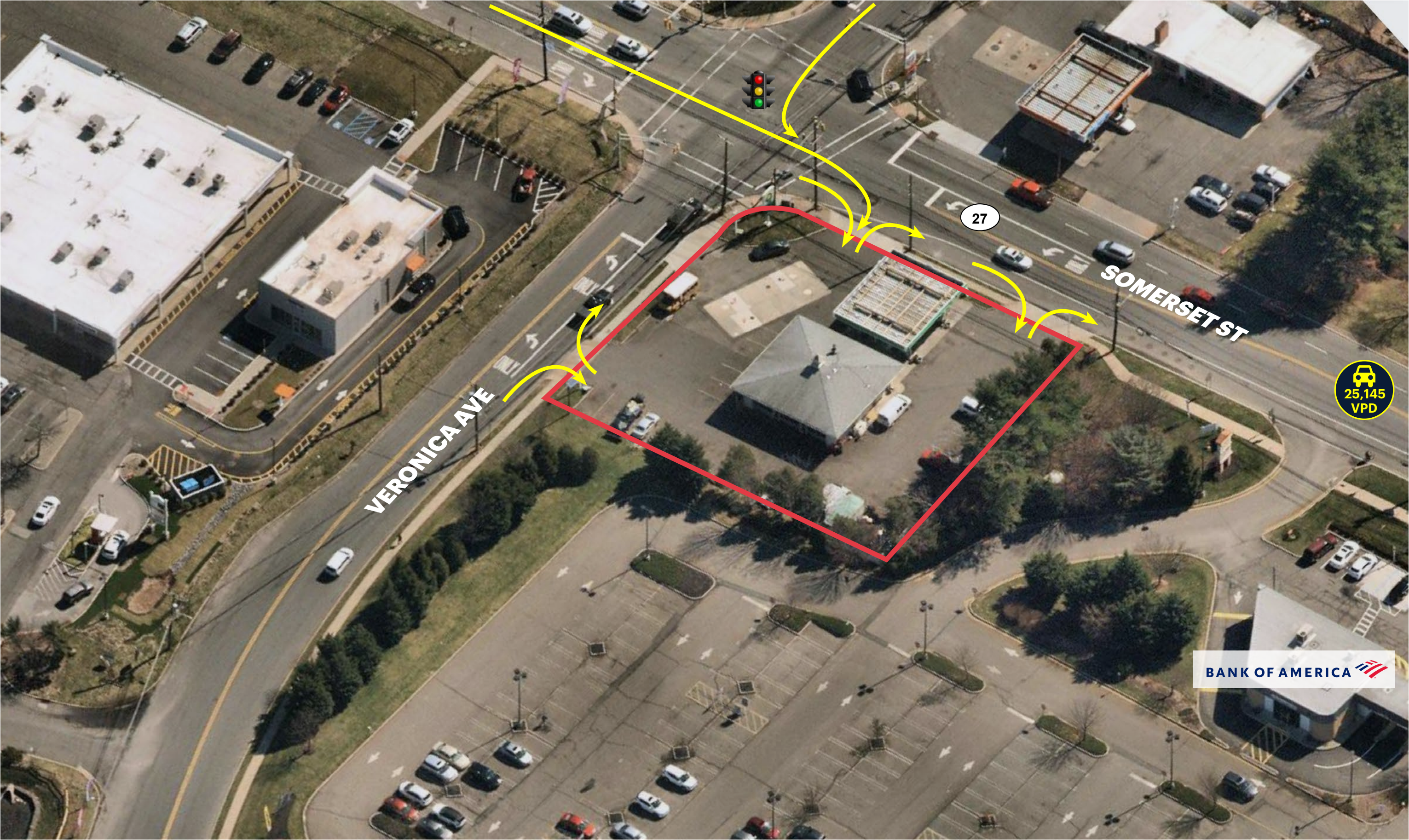
RIPCO
REAL ESTATE

611 River Drive
3rd Floor
Elmwood Park, NJ 07407
201.777.2300

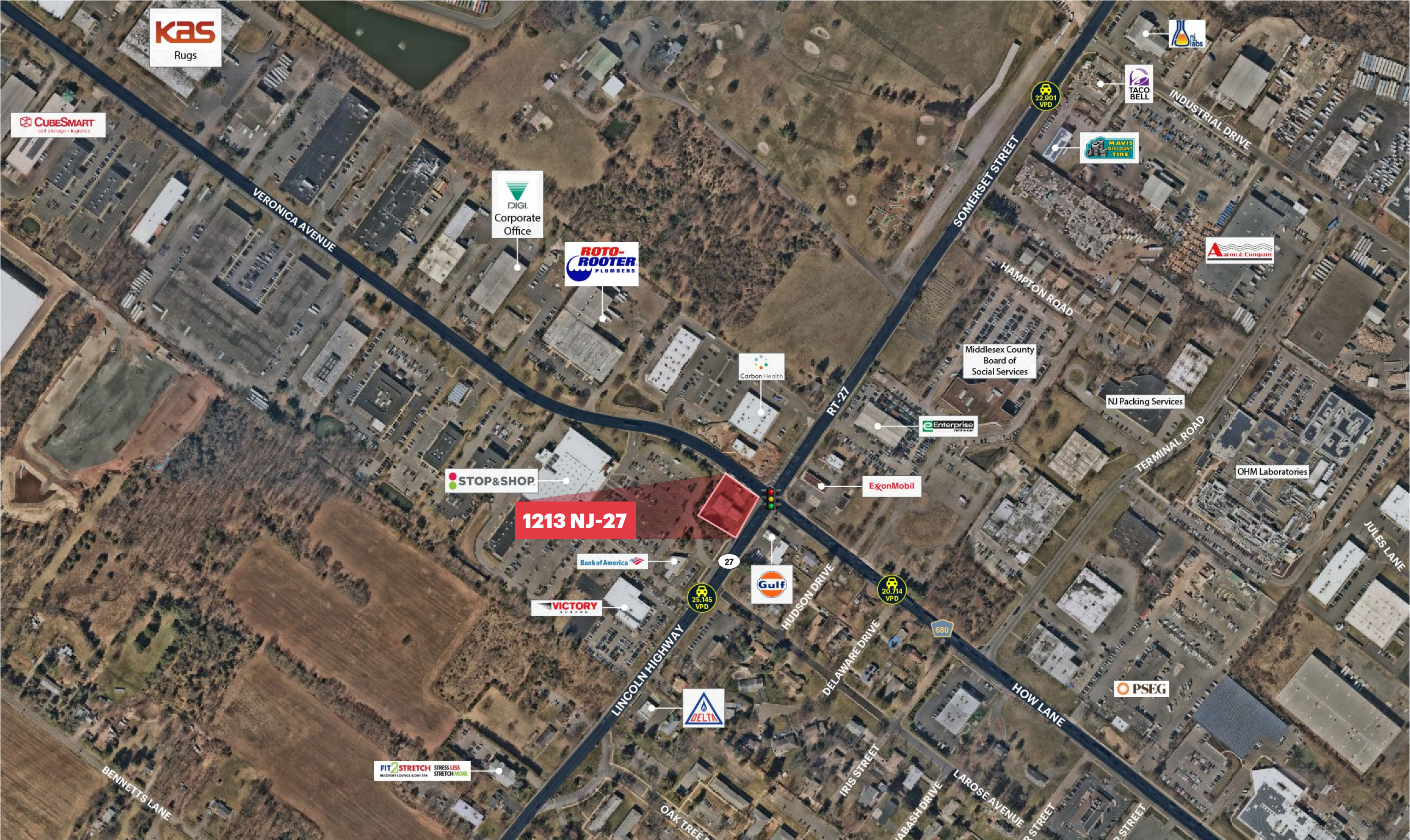
Please visit us at ripconj.com for more information

This information has been secured from sources we believe to be reliable, but we make no representations as to the accuracy of the information. References to square footage are approximate. Buyer must verify the information and bears all risk for any inaccuracies.

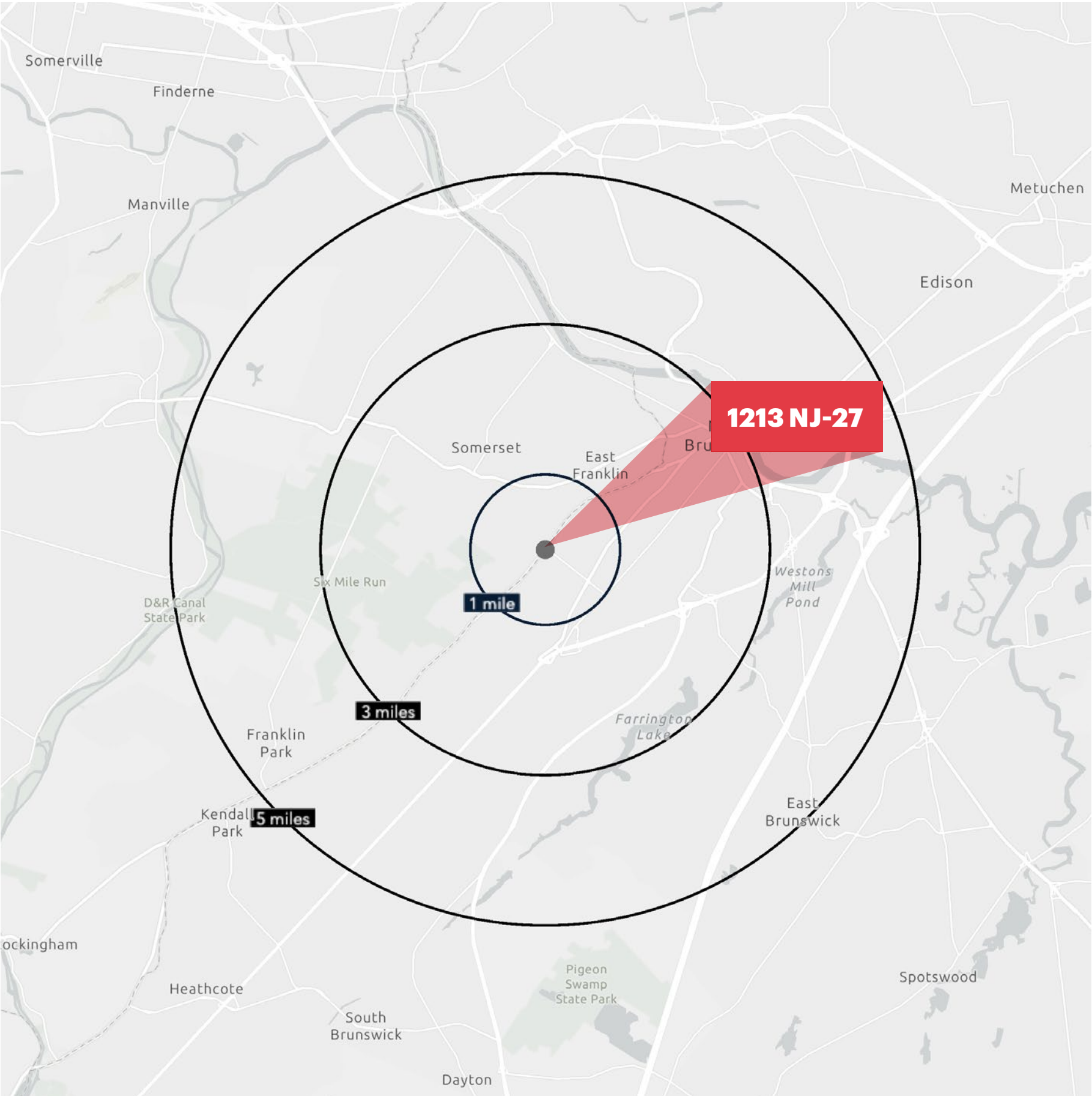
OBLIQUE AERIAL



LOW-LEVEL AERIAL



DEMOGRAPHICS



1 MILE RADIUS

POPULATION
8,757
HOUSEHOLDS
3,061
MEDIAN AGE
36.7
COLLEGE GRADUATES (Bachelor's +)
2,548 - 43.1%

TOTAL BUSINESSES
538
TOTAL EMPLOYEES
7,589
TOTAL DAYTIME POPULATION
11,569
AVERAGE HOUSEHOLD INCOME
\$137,877

3 MILE RADIUS

POPULATION
126,744
HOUSEHOLDS
41,993
MEDIAN AGE
33.6
COLLEGE GRADUATES (Bachelor's +)
33,720 - 41.8%

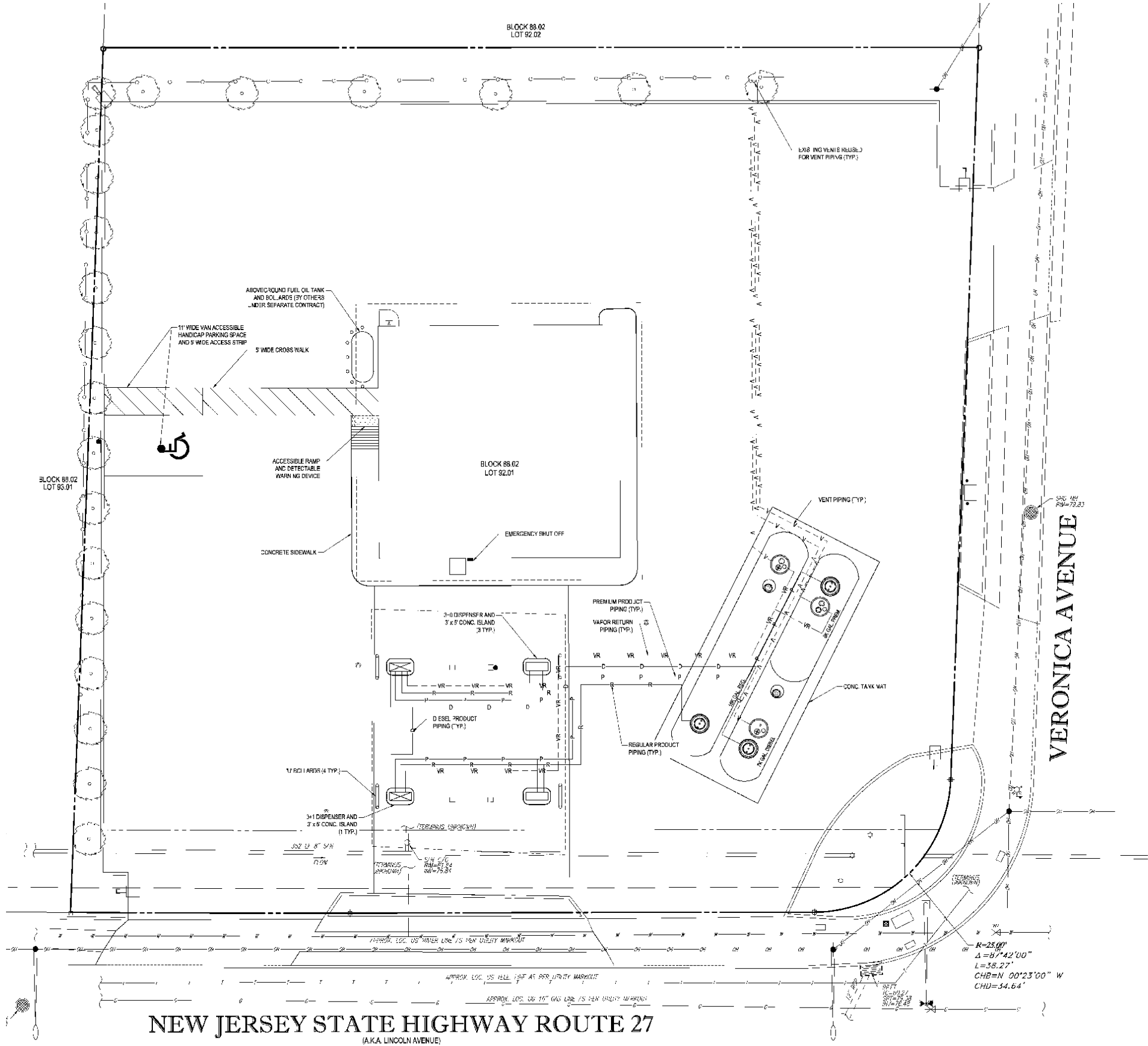
TOTAL BUSINESSES
4,246
TOTAL EMPLOYEES
67,034
TOTAL DAYTIME POPULATION
130,805
AVERAGE HOUSEHOLD INCOME
\$123,226

5 MILE RADIUS

POPULATION
237,049
HOUSEHOLDS
79,443
MEDIAN AGE
35.1
COLLEGE GRADUATES (Bachelor's +)
78,766 - 51.1%

TOTAL BUSINESSES
7,788
TOTAL EMPLOYEES
120,987
TOTAL DAYTIME POPULATION
240,249
AVERAGE HOUSEHOLD INCOME
\$142,777

*2024 estimates



SURVEY OVERLAY

