

A multi-story brick building with horizontal bands of windows. The top left corner of the building features the 'KORE co-working' logo. The building is surrounded by green trees and a clear blue sky.

**KORE** co-working

**SHORT TERM  
LEASES  
AVAILABLE**

**KORE 9250**

9250 E COSTILLA AVE, GREENWOOD VILLAGE, CO

**OFFICE OR MEDICAL**

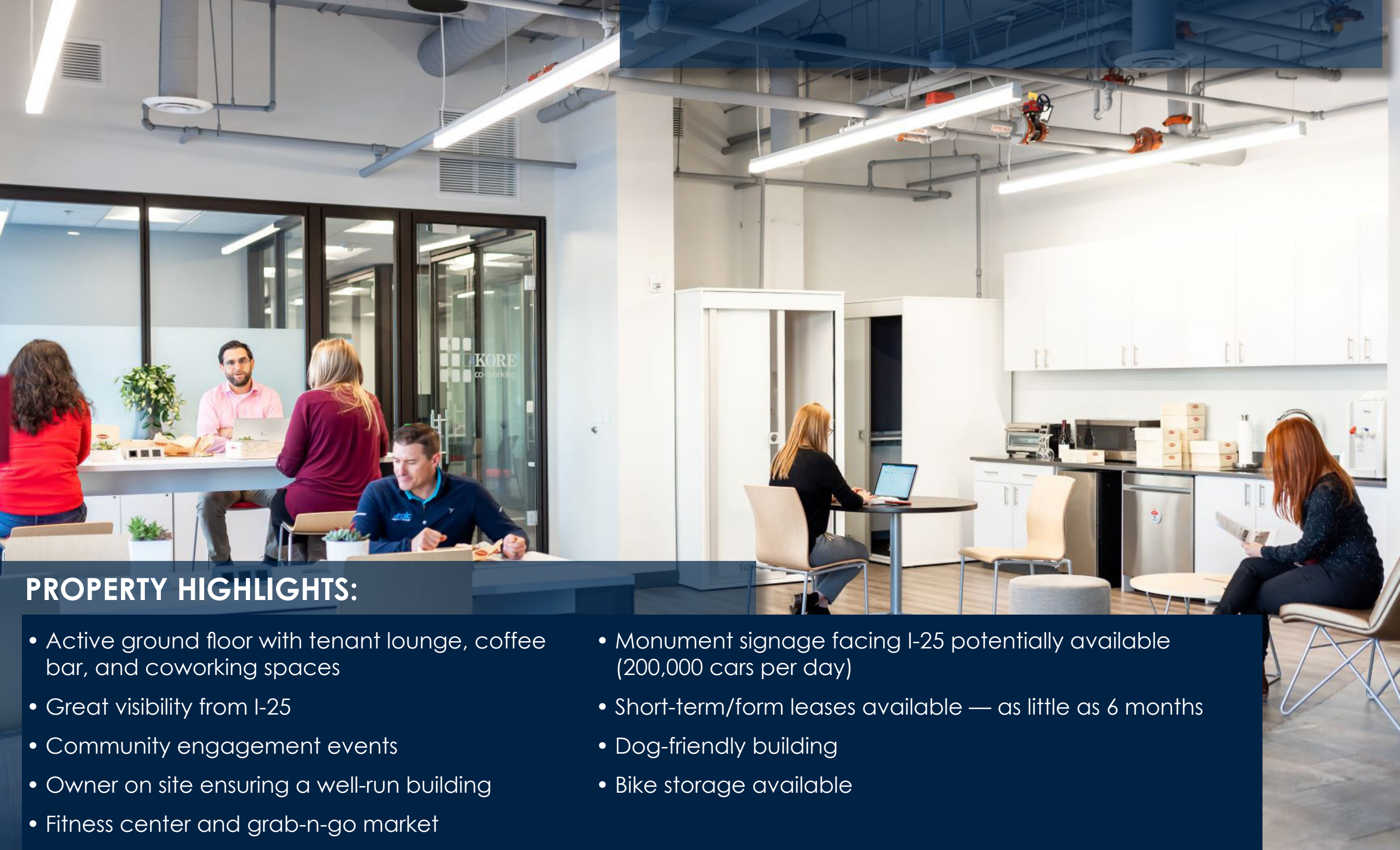
For leasing information contact:

Michelle Gertzman | 720.743.6399  
mgertzman@premisescommercial.com

Matt Smith | 303.996.8460  
msmith@premisescommercial.com

**PREMISES**  
PREMISES COMMERCIAL REAL ESTATE LLC





## PROPERTY HIGHLIGHTS:

- Active ground floor with tenant lounge, coffee bar, and coworking spaces
- Great visibility from I-25
- Community engagement events
- Owner on site ensuring a well-run building
- Fitness center and grab-n-go market
- Monument signage facing I-25 potentially available (200,000 cars per day)
- Short-term/form leases available — as little as 6 months
- Dog-friendly building
- Bike storage available





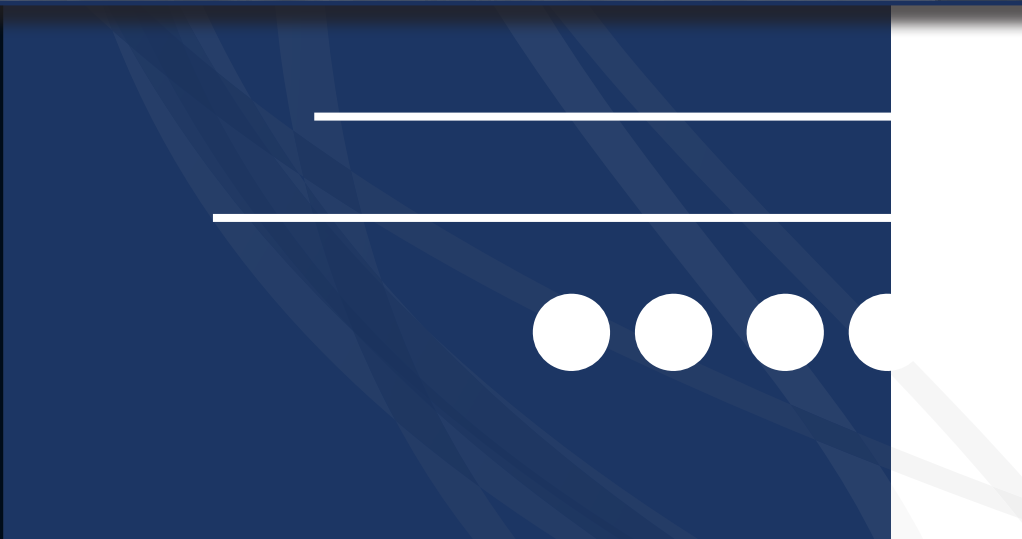


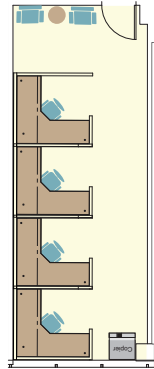
CLOSE TO SHOPPING,  
RESTAURANTS & PARKS



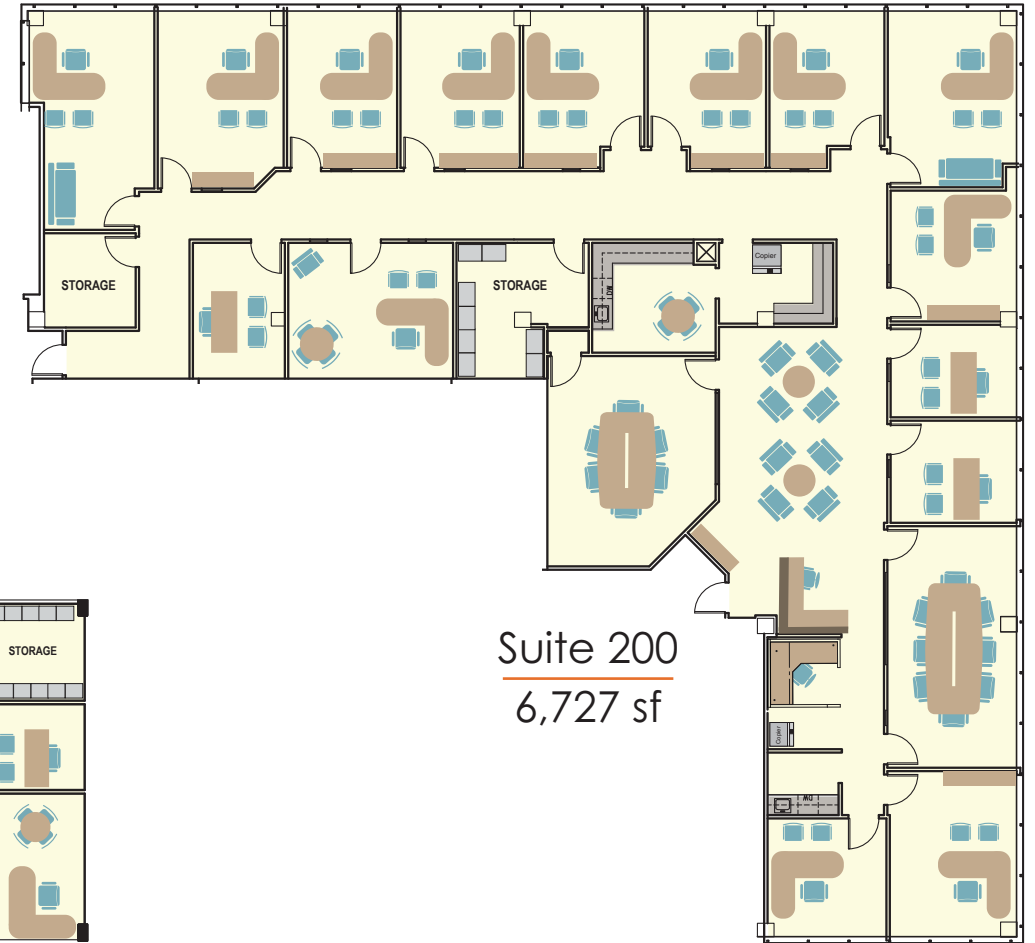
KORE  
9250



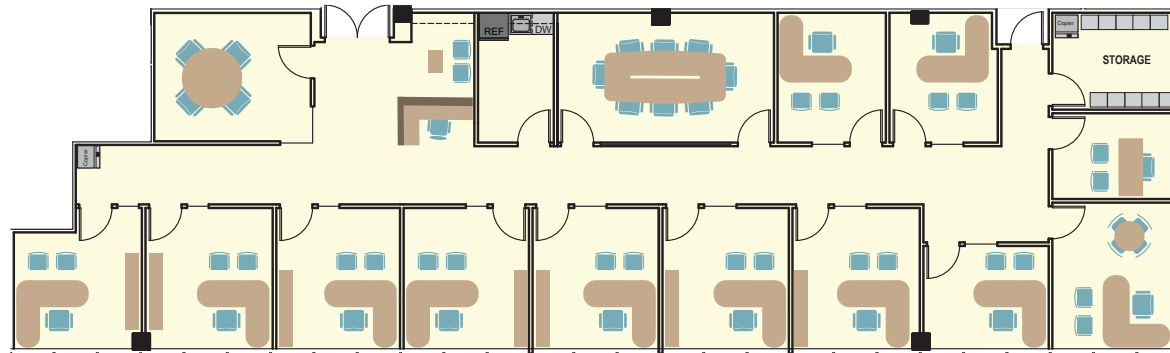




Suite 230  
465 sf



Suite 200  
6,727 sf



Suite 305  
4,189 sf

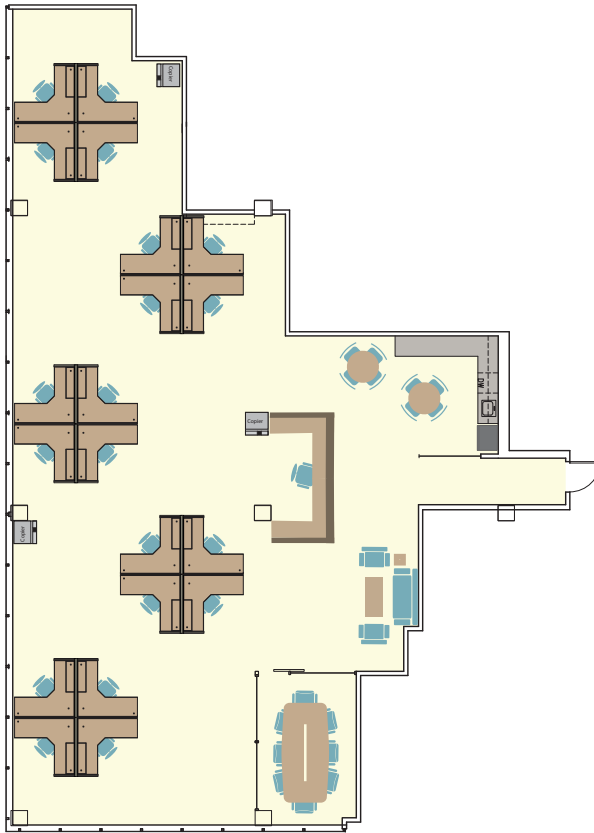


## AVAILABLE SUITES

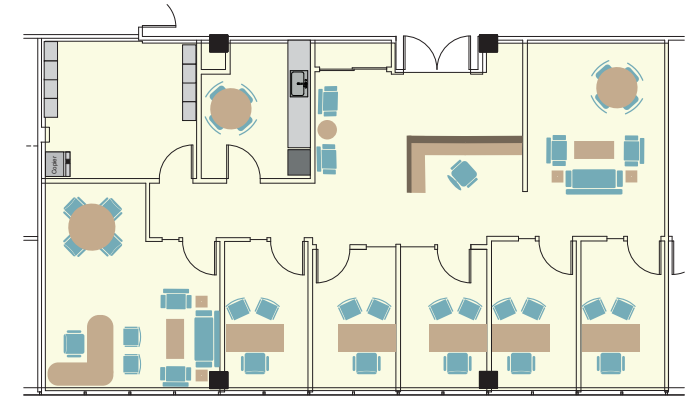
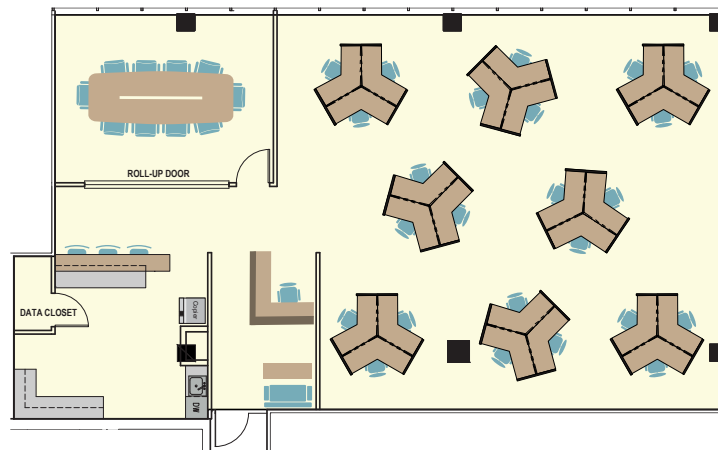
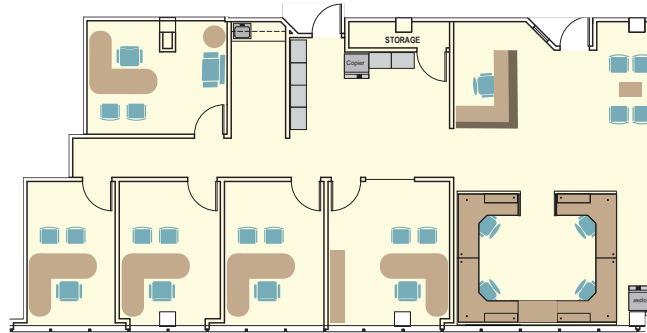


The information contained herein, while not guaranteed, has been secured from sources we believe to be reliable. Different brokerage relationships are available which include Seller/Landlord Agency, Buyer/Tenant Agency and Transaction Broker. Premises Commercial Real Estate, LLC is acting in this capacity as Landlord's/Sublessor's Agent, unless otherwise agreed, and owes its fiduciary allegiance to Landlord/Sublessor as defined by Colorado Real Estate Commission.

Suite 505  
3,330 sf



Suite 510  
2,360 sf



(Available 2/1/2026)

Suite 655  
2,293 sf

Suite 650  
2,719 sf



For leasing information contact:

Michelle Gertzman | 720.743.6399  
mgertzman@premisescommercial.com

Matt Smith | 303.996.8460  
msmith@premisescommercial.com

**AVAILABLE SUITES**