

# FOR LEASE

±29,485 Square Feet

Divisible Warehouse Space

## 1110 Springfield Road

Union, New Jersey



Incredible Location - Close Proximity To The Garden State Parkway, Route 22, and I-78  
Ideal for Warehouse / Last-Mile / Retail



**NAI** DiLeo-Bram & Co.

Commercial Real Estate Services, Worldwide.

For further information please contact Exclusive Broker:

Kyle Gerace  
Vice President

732 985 3000 ext. 229  
[kgerace@naidb.com](mailto:kgerace@naidb.com)

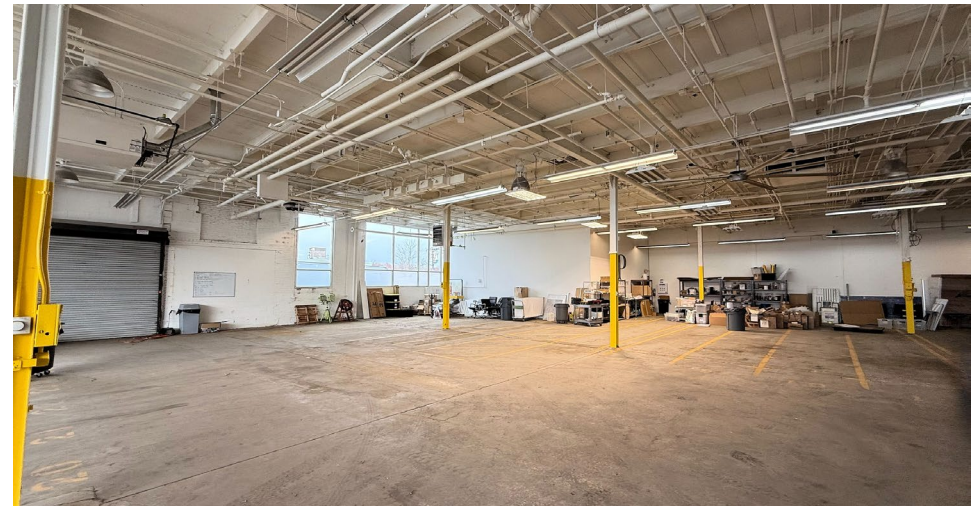
Christopher Chiusolo  
Vice President

732 985 3000 ext. 210  
[cchiusolo@naidb.com](mailto:cchiusolo@naidb.com)



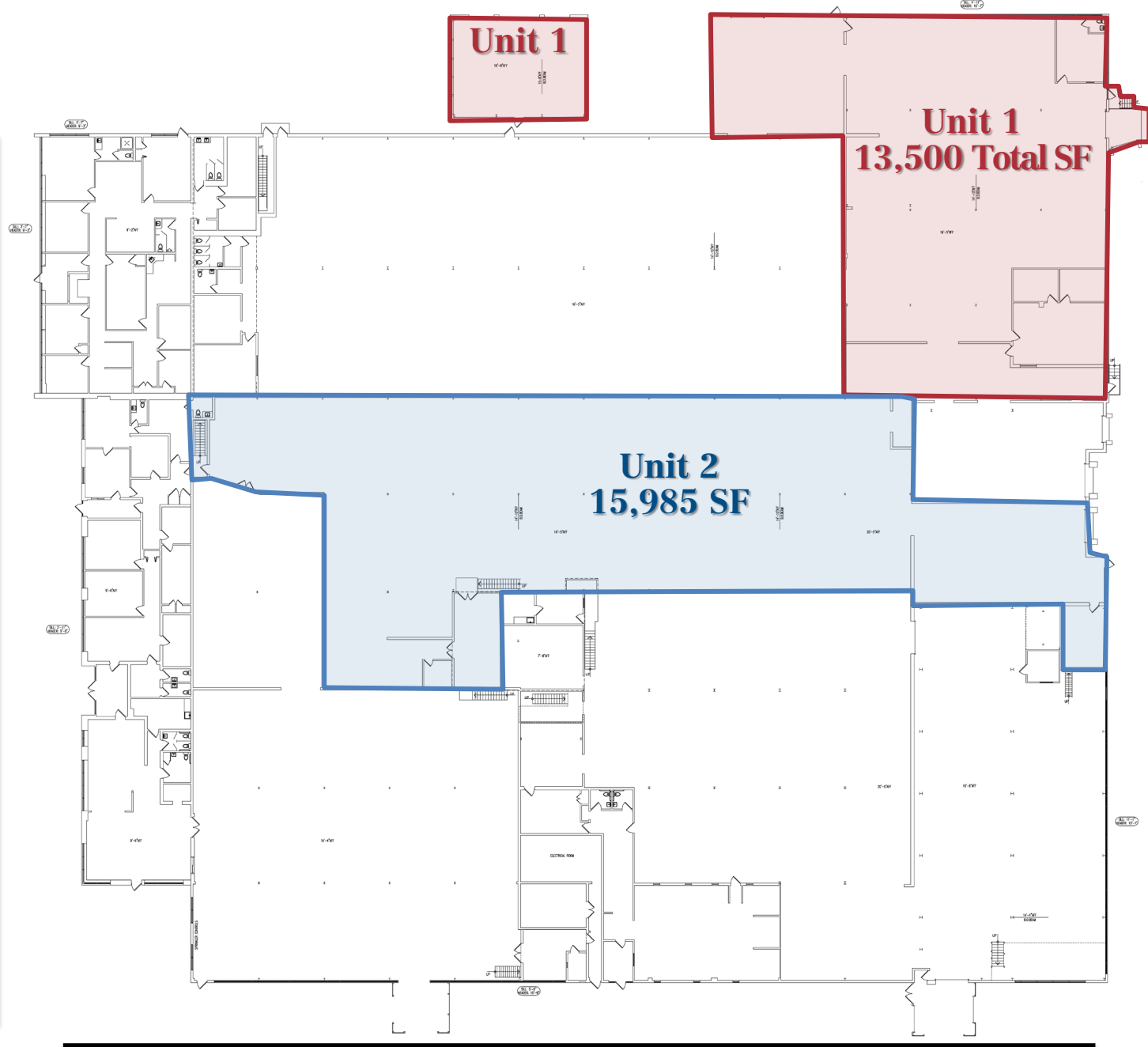
# PROPERTY FEATURES

- ±29,485 sq. ft. of warehouse space
- **Unit 1:** 13,500 sq. ft. unit featuring 1 loading dock, 4 drive-ins and all new windows
- **Unit 2:** 15,985 sq. ft. unit featuring 1 loading dock
- Ceilings: 15' clear
- Strategically located within close proximity to the Garden State Parkway, Route 22, and I-78
- Ideal for Warehouse / Last-Mile / Retail
- *Call for Lease Price Information*



# FLOOR PLAN

Springfield Road



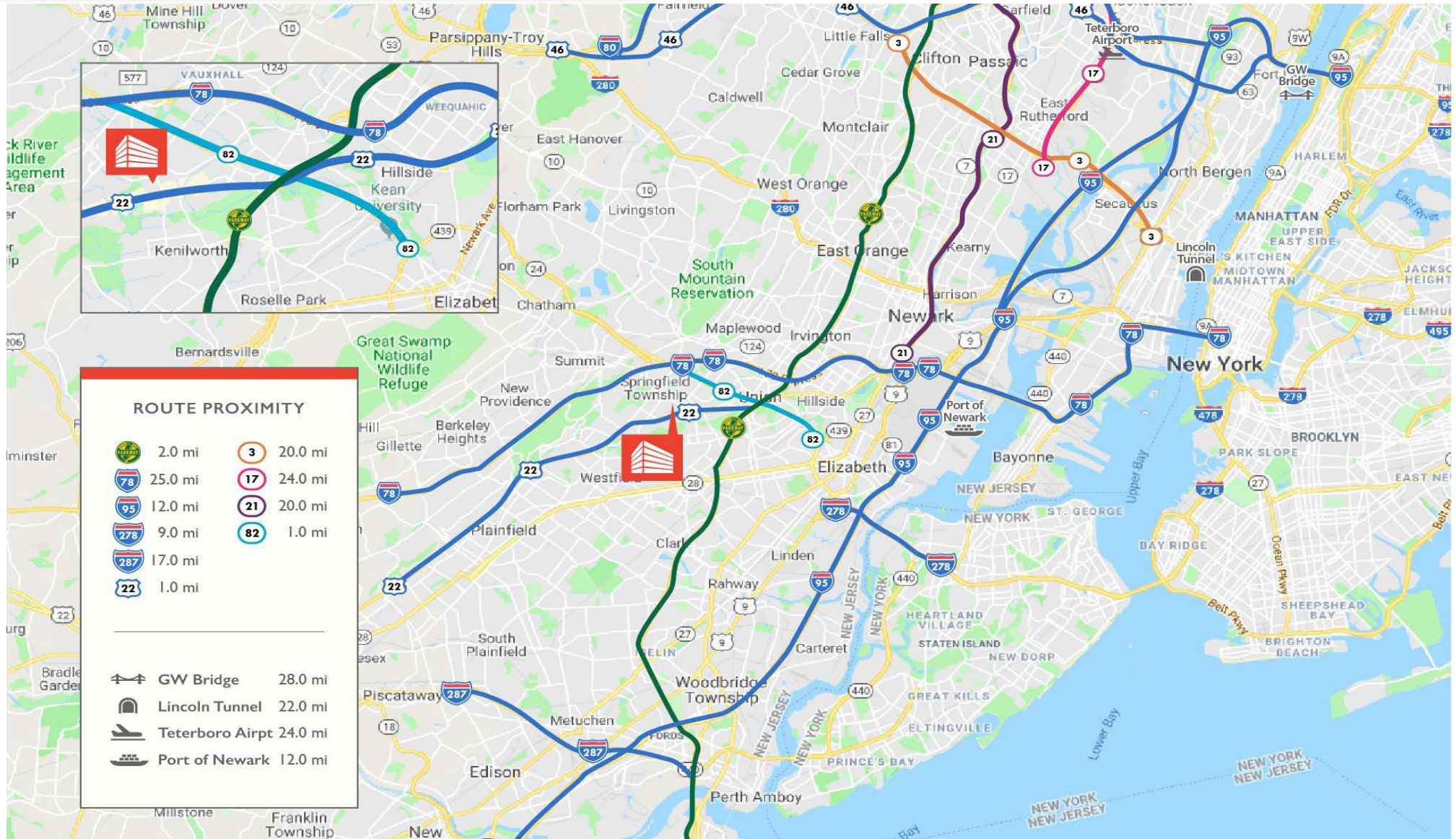
Milltown Road



# STRATEGICALLY LOCATED

# 1110 Springfield Road

## Union, New Jersey



For further information please contact Exclusive Broker:

Kyle Gerace  
Vice President

732 985 3000 ext. 229  
[kgerace@naidb.com](mailto:kgerace@naidb.com)

Christopher Chiusolo  
Vice President

732 985 3000 ext. 210  
[cchiusolo@naidb.com](mailto:cchiusolo@naidb.com)

**THE STRO**  
COMPANIES

**NAIDiLeo-Bram&Co.**  
Commercial Real Estate Services, Worldwide.

The information contained herein has been given to us by the owner of the property or other sources we deem reliable. We have no reason to doubt its accuracy, but we do not guarantee it. All information should be verified prior to purchase or lease.