

**SYCAMORE CENTER**  
**17022 - 17044 MONTANERO STREET.**  
**CARSON, CA 91746**  
**(818) 519-0592**



**Well maintained business-park adjacent to 405, 110 & 91 freeways. Dock high and ground level loading, approx. 24-foot clear height, ample power, and fire sprinkler system.**

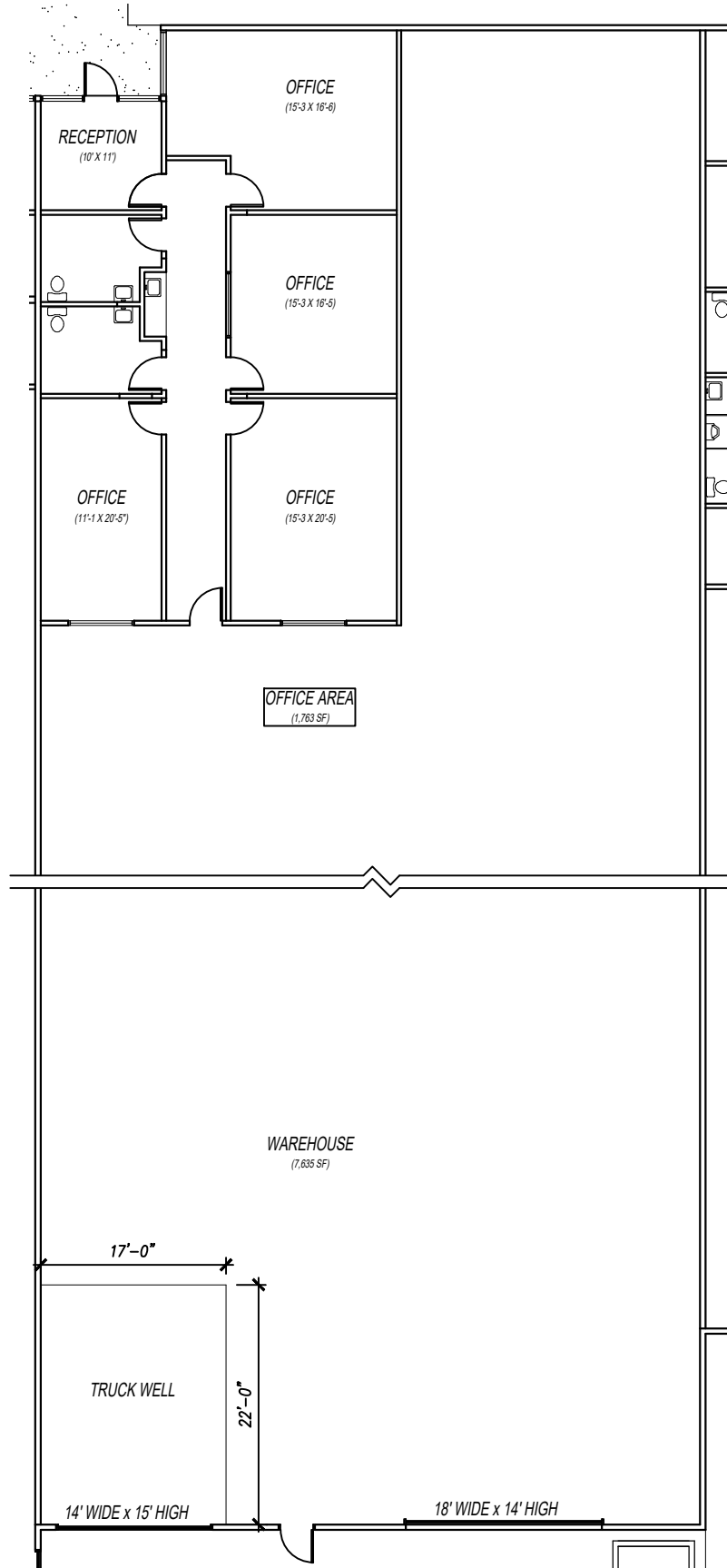
**SPACE AVAILABLE**

<u>BUILDING/SUITE</u>	<u>RENTABLE SF</u>	<u>RATE/SF</u>	<u>DATE AVAILABLE</u>	<u>DESCRIPTION</u>
<b>17022 Montanero</b> Suite 5	9,000	\$1.70	Jan 1, 2025	Nice industrial unit with reception, 4 private offices, 2 restrooms and warehouse. Dock high & ground level loading. Sprinklered. 24 foot clear height. Skylights. Oversize loading doors.
<b>17044 Montanero</b> Nothing Available				

For More Information Call:  
 Ned Geoghegan, Director of Leasing  
 (818) 519-0592 Cell

CAM = \$0.13 PSF

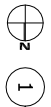
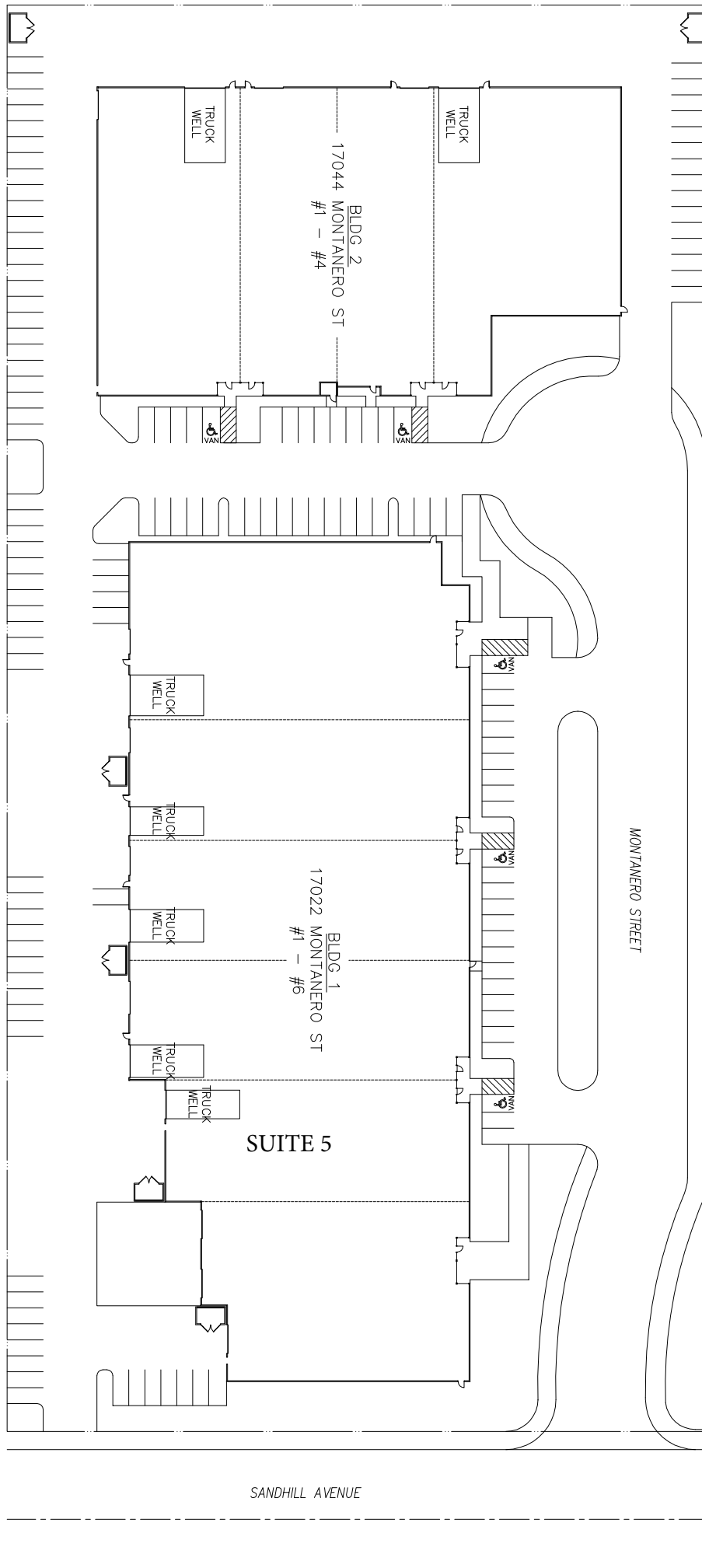
No warranty, express or implied, is made as to the accuracy of the information contained herein. This information has not been verified and is submitted subject to errors, omissions, change of price, rental or other conditions, including withdrawal without notice. No liability of any kind is to be imposed on the brokers herein. Edward Geoghegan DRE# 01262292, Sandhill Management Inc. DRE# 00965053



# SYCAMORE BUSINESS PARK - SUITE 5

17022 Montanero Street CARSON, CA

Scale: 1/16"=1'-0"



SITE PLAN - Sycamore Center Business Park, Carson CA

Scale: NONE