

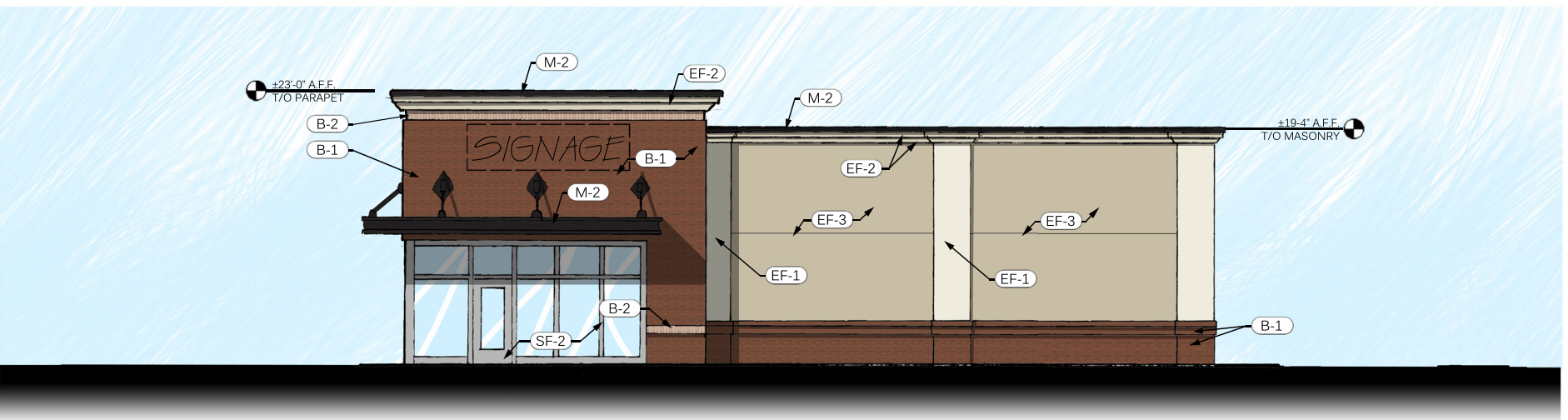


RETAIL BUILDING 'A' PARKING LOT ELEVATION

TENANT SIGNAGE NOT INCLUDED IN THIS SUBMITTAL. INDIVIDUAL TENANTS WILL SUBMIT THEIR OWN SIGNAGE TO MUNICIPALITY FOR APPROVAL.



RETAIL BUILDING 'A' DRIVE-THRU ELEVATION



RETAIL BUILDING 'A' PATIO ELEVATION



RETAIL BUILDING 'A' REAR ELEVATION

EXTERIOR FINISH SCHEDULE

MARK	CATEGORY	MANUFACTURER	DESCRIPTION / FINISH
B-1	MODULAR BRICK	GENERAL SHALE	COLOR: ST, LOUIS w/ ARGOS RED MORTAR, TOOLED JOINTS
B-2	MODULAR BRICK	GENERAL SHALE	COLOR: ARCADIA w/ ARGOS IVORY BUFF MORTAR, TOOLED JOINTS
EF-1	EIFS	DRYVIT	FINISH SANDBLAST, COLOR TO MATCH: SW 6385 "DOVER WHITE"
EF-2	EIFS	DRYVIT	FINISH SANDBLAST, COLOR TO MATCH: SW 6148 "WOOL SKEIN"
EF-3	EIFS	DRYVIT	FINISH SANDBLAST, COLOR TO MATCH: SW 6149 "RELAXED KHAKI"
DFS-2	STUCCO	DRYVIT	FINISH SANDBLAST, COLOR TO MATCH: SW 6148 "WOOL SKEIN"
P-2	PAINT	SHERWIN WILLIAMS	COLOR TO MATCH: SW 6148 "WOOL SKEIN"
F-1	FABRIC	SUNBRELLA	FABRIC AWNING, COLOR TO MATCH: SUNBRELLA "BLACK"
LT-1	LIGHT FIXTURE	T.B.D.	ARCHITECTURAL LIGHT FIXTURE
M-1	METAL	PAC-CLAD	METAL COPING & STANDING SEAM ROOF, COLOR: "AGED COPPER"
M-2	METAL	PAC-CLAD	METAL COPING & METAL CANOPY, COLOR: "MATTE BLACK"
M-3	METAL	PAC-CLAD	METAL COPING, COLOR: "STONE WHITE"
SF-1	STOREFRONT	YKK	STOREFRONT SYSTEM, COLOR: "DARK BRONZE"
SF-2	STOREFRONT	YKK	STOREFRONT SYSTEM, COLOR: "ANODIZED ALUMINUM"

DEVELOPED BY:



MURRAY LANDING RETAIL BUILDING 'A'

IRMO, SOUTH CAROLINA



Architecture - Planning - Interiors

Project Number: D19-132
24 SEPTEMBER 2021