

107,642 SF FREESTANDING WAREHOUSE

with 16,727 SF office



Seagis Logistics Center
Freestanding cross-dock facility

FOR LEASE

10100 NW 25th Street | Doral, FL 33172



Highlights

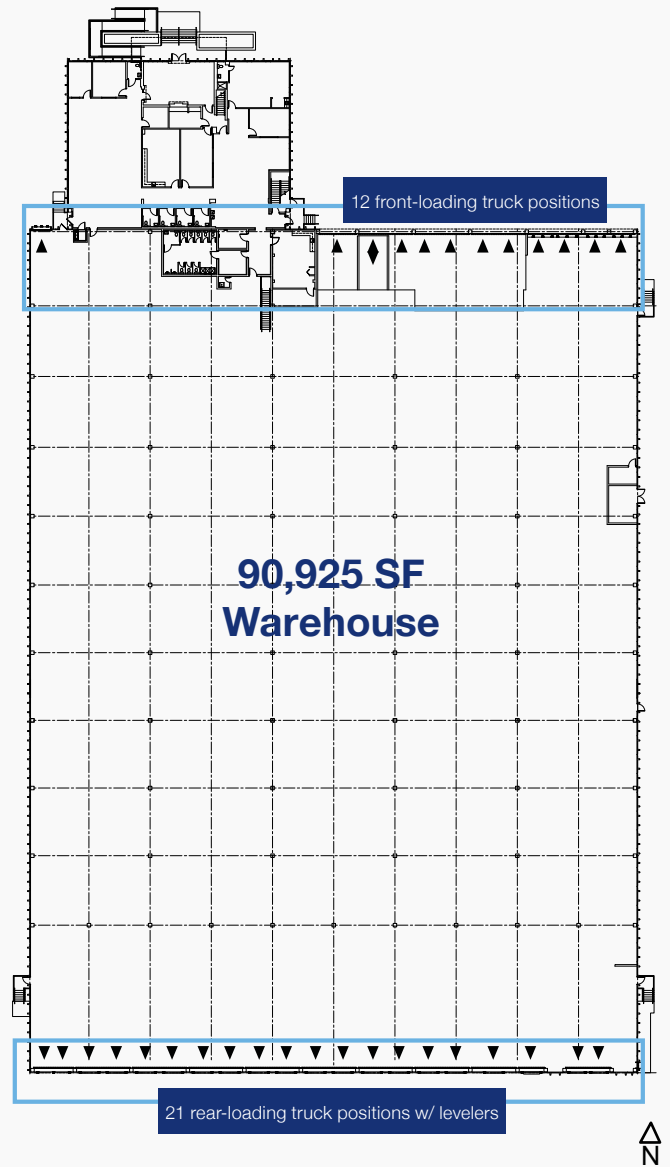
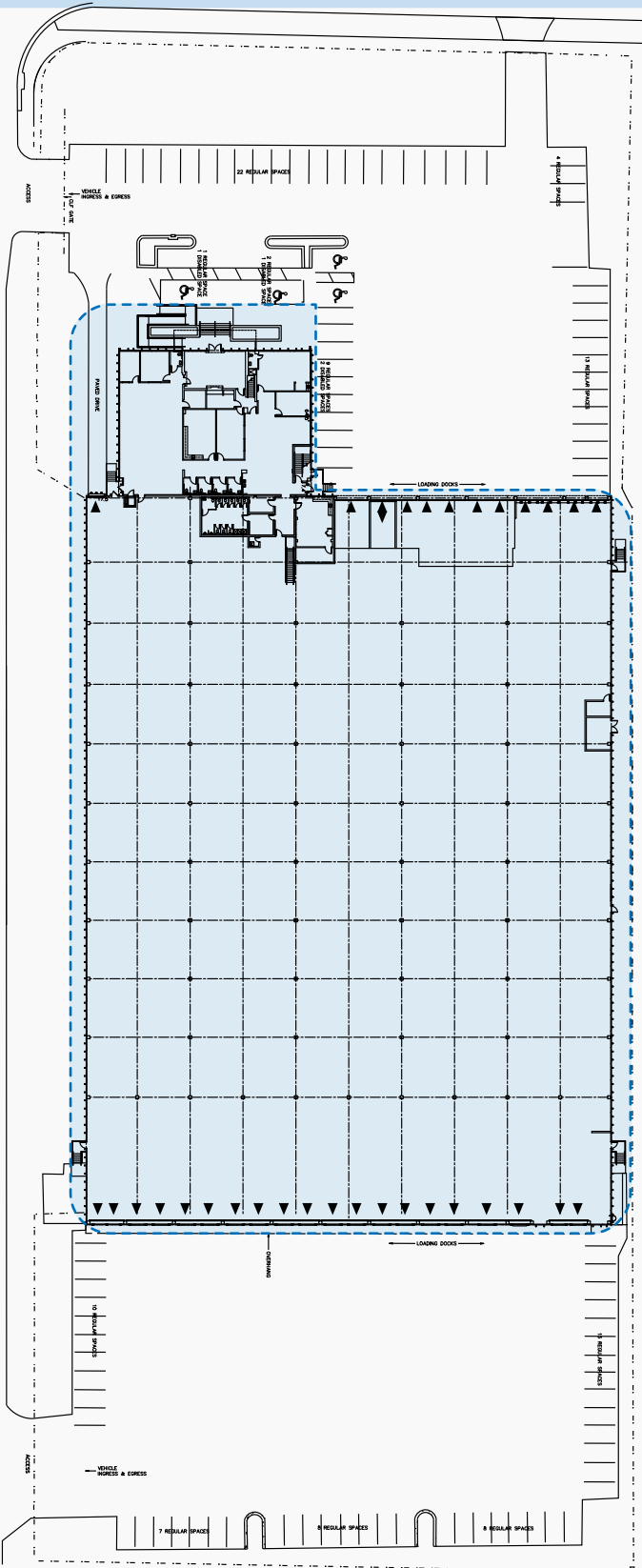
- 107,642 SF total
- 90,925 SF warehouse
- 8,292 SF ground floor office
- 8,425 SF mezzanine
- Heavy power
1,000A, 3Phase, 480V
- 26' x 30' typical column spacing
- 21 rear-loading truck positions
with dock-height doors and pit
levelers
- 12 front-loading truck positions
with dock-height doors
- 1 drive-in ramp
- 22' clear height
- 57 car parking spaces
- Available Q3 2026

PROPERTY DETAILS

Seagis Logistics Center site plan overview

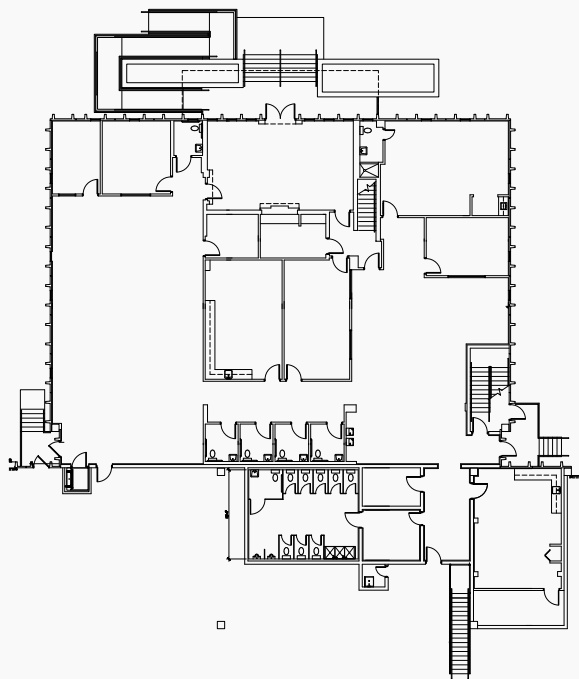
10101 NW 25th Street, | Doral, FL 33172

NW 25th Street

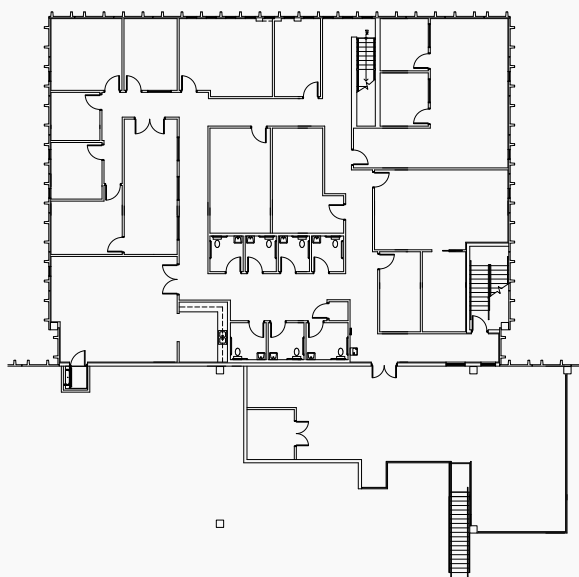


- ▼ Truck position
- ◆ Drive-in ramp

107,642 SF Total



8,292 SF ground floor office



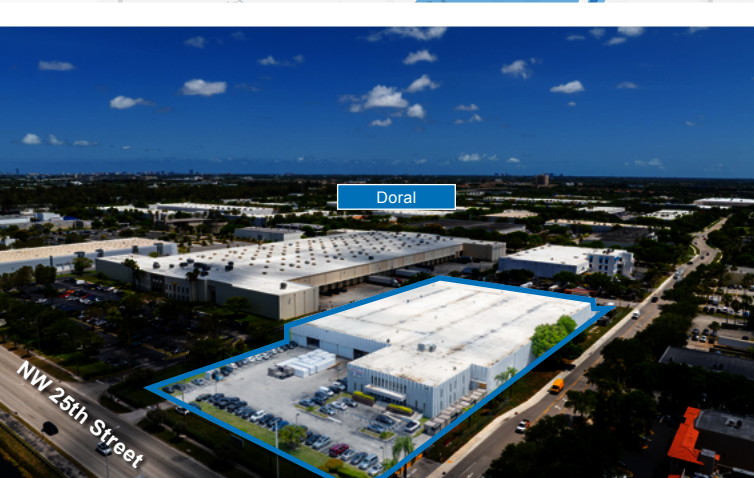
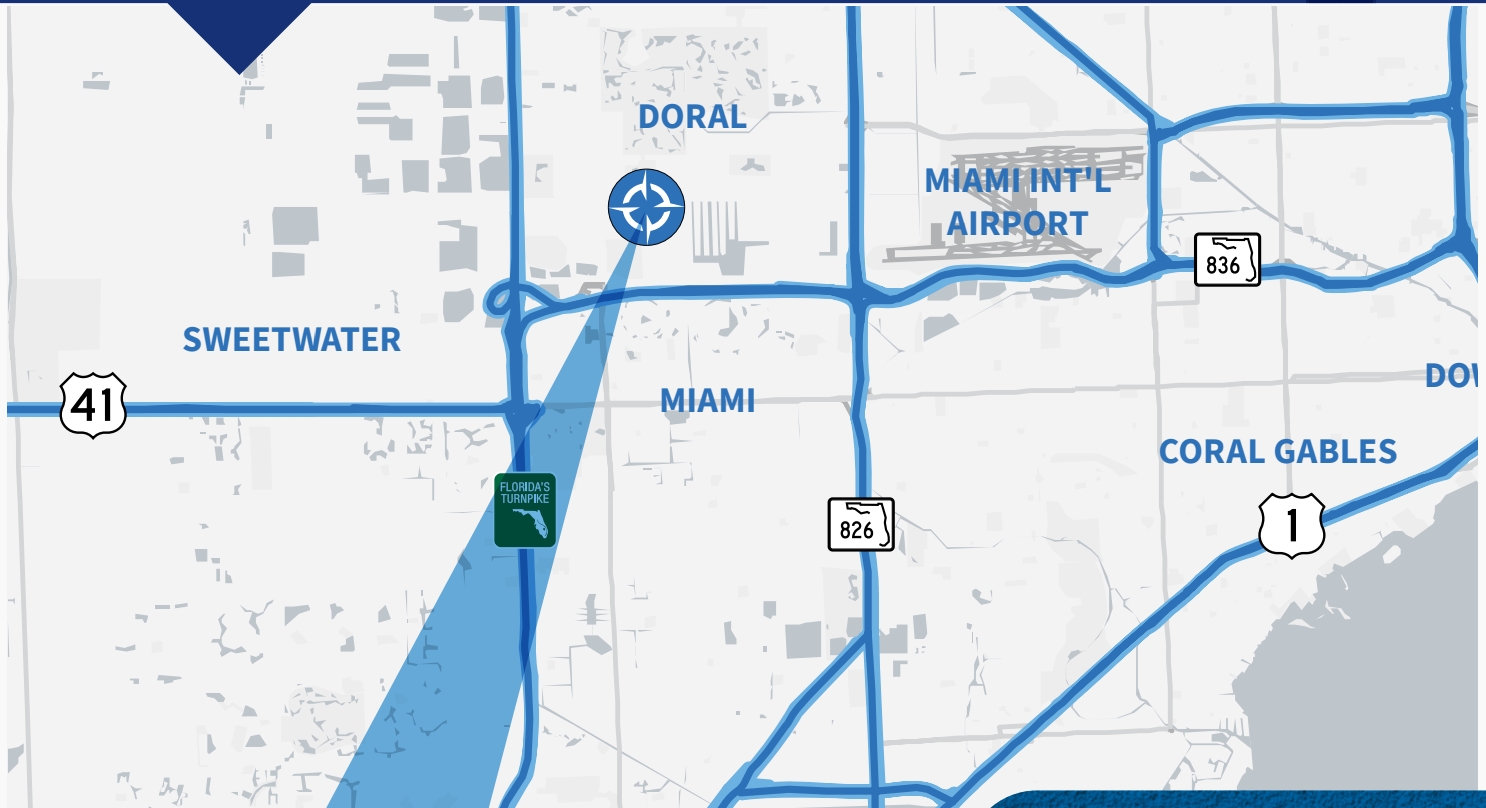
8,425 SF mezzanine



PROPERTY DETAILS

Seagis Logistics Center location overview

10101 NW 25th Street, | Doral, FL 33172



Location details

- Direct access to NW 25th Street
- NW 25th Street viaduct provides immediate access to major throughfares
- Proximity to Miami International Airport enhances connectivity and distribution efficiency

FOR LEASING INQUIRIES, PLEASE CONTACT:

Ana Rivera
305 778 7652
ana.rivera@jll.com

Brian Smith
305 960 8403
smith.brian@jll.com

Audley Bosch
305 960 8404
audley.bosch@jll.com

