

# MOUNTAIN VIEW CORRIDOR LAND



FOR SALE

## PROPERTY DETAILS

6170 WEST 7800 SOUTH (APPROX), WEST JORDAN, UT 84081

- **Approx North 44 Acres of the Existing 86 Acres**
- **Parcel ID: 20263010040000**
- **Interchange Overlay Zone (IOZ) Information**
- **Link to November 2022 Survey of Entire Parcel**
- **Link to November 2022 Phase I**
- **Updated Survey Being Performed for Parcel to be Sold**

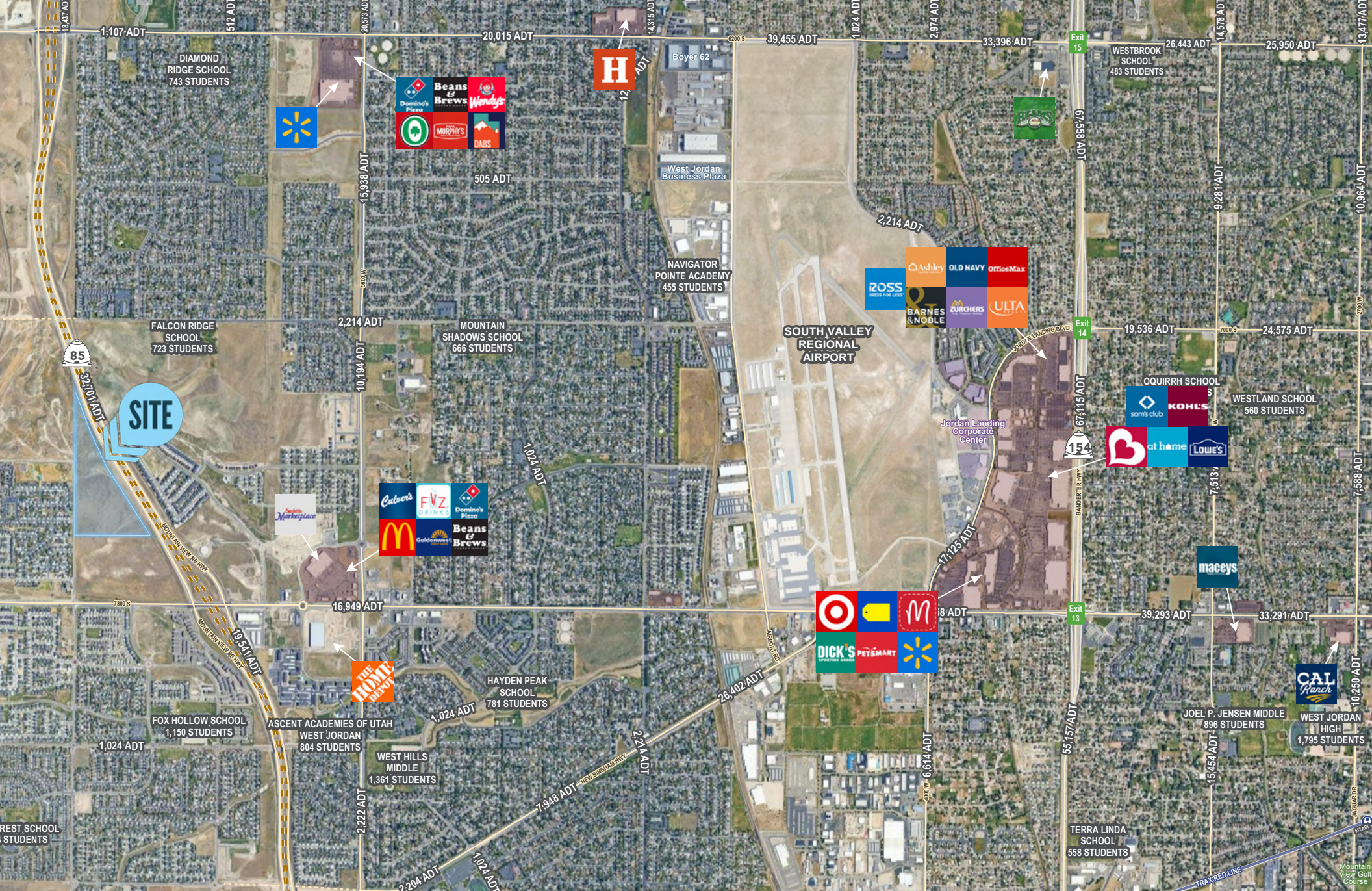


**MOUNTAIN WEST**  
COMMERCIAL REAL ESTATE

**CHRIS FALK, CCIM, SIOR**  
cfalk@mwcre.com  
direct 385.429.5500  
[View Profile](#)

**BRAXTON WILLIE, CCIM**  
bwillie@mwcre.com  
direct 385.429.5501  
[View Profile](#)

**FULL SERVICE  
COMMERCIAL REAL ESTATE**  
1755 East 1450 South  
Clearfield, UT 84015  
Office 801.578.5580  
[www.mwcre.com](http://www.mwcre.com)



**BRAXTON WILLIE, CCIM**  
 bwillie@mwcre.com  
 direct 801.803.3334  
[View Profile](#)

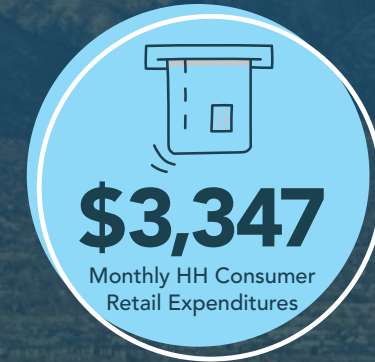
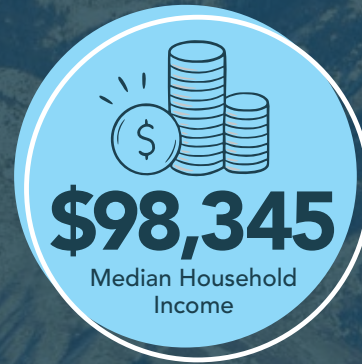
**CHRIS FALK, CCIM, SIOR**  
 cfalk@mwcre.com  
 direct 801.499.6514  
[View Profile](#)

**FULL SERVICE  
 COMMERCIAL REAL ESTATE**  
 1755 East 1450 South  
 Clearfield, UT 84015  
 Office 801.456.8800  
[www.mwcre.com](http://www.mwcre.com)

# WASATCH FRONT

The Wasatch Front, situated in northern Utah, is a vibrant and bustling region characterized by its booming economy and growing population. Anchored by major cities like Salt Lake City, Provo, and Ogden, the area serves as the state's economic powerhouse, boasting diverse industries such as technology, healthcare, finance, and outdoor recreation. Its robust job market and entrepreneurial spirit attract talent from

across the nation. With a population steadily increasing due to both natural growth and inward migration, the Wasatch Front continues to evolve into a dynamic hub of innovation and opportunity, nestled against the stunning backdrop of the Wasatch Mountain Range.



**MOUNTAIN WEST**  
COMMERCIAL REAL ESTATE

**BRAXTON WILLIE, CCIM**  
bwillie@mwcre.com  
direct 801.803.3334  
[View Profile](#)

**CHRIS FALK, CCIM, SIOR**  
cfalk@mwcre.com  
direct 801.499.6514  
[View Profile](#)

**FULL SERVICE  
COMMERCIAL REAL ESTATE**  
1755 East 1450 South  
Clearfield, UT 84015  
Office 801.456.8800  
[www.mwcre.com](http://www.mwcre.com)

# WHY UTAH?



## OVERVIEW OF THE UTAH ECONOMY

In 2022, the state of Utah has a population of 3,399,940, having grown an annualized 1.8% over the five years to 2022, which ranks it 2nd out of all 50 US states by growth rate. Utah's gross state product (GSP) in 2022 reached \$185.2b, with growth of 3.7% over the 5 years to 2022. Businesses in Utah employed a total of 1,930,947 people in 2022, with average annual employment growth over the past five years of 2.5%.

The top three sectors by total employment are Manufacturing, Real Estate and Rental and Leasing, Professional, Scientific and Technical Services, while the unemployment rate across the state in 2022 was 2.2%.

source: ibisworld.com



**MOUNTAIN WEST**  
COMMERCIAL REAL ESTATE

**BRAXTON WILLIE, CCIM**  
bwillie@mwcre.com  
direct 801.803.3334  
[View Profile](#)

**CHRIS FALK, CCIM, SIOR**  
cfalk@mwcre.com  
direct 801.499.6514  
[View Profile](#)

**FULL SERVICE  
COMMERCIAL REAL ESTATE**  
1755 East 1450 South  
Clearfield, UT 84015  
Office 801.456.8800  
[www.mwcre.com](http://www.mwcre.com)