



INDUSTRIAL SPACE | FOR LEASE

2304 NORTH CHESTER STREET | GASTONIA, NC

Freestanding building, fronting the highly-trafficked Highway 321 at a stoplight, is perfect for trades, parts and sales, and a multitude of additional industrial concepts.

SAM KLINE, CCIM
c 704 777 6003
skline@mecacommercial.com





PROPERTY INFORMATION

SF*

8,000 SF

ACREAGE*

0.49 Acres

PID#

100209

ZONING

I2 in Gastonia

FEATURES

- Located on Highway 321 at a stoplight
- Excellent traffic counts and proximity to I-85
- Fenced in yard
- Perfect for Trades, Parts and Sales and a multitude of other industrial uses

LEASE RATE

\$10.50 per SF, NNN + \$0.75/SF TICAM



SAM KLINE, CCIM

c 704 777 6003

skline@mecacommercial.com

MECA Commercial Real Estate

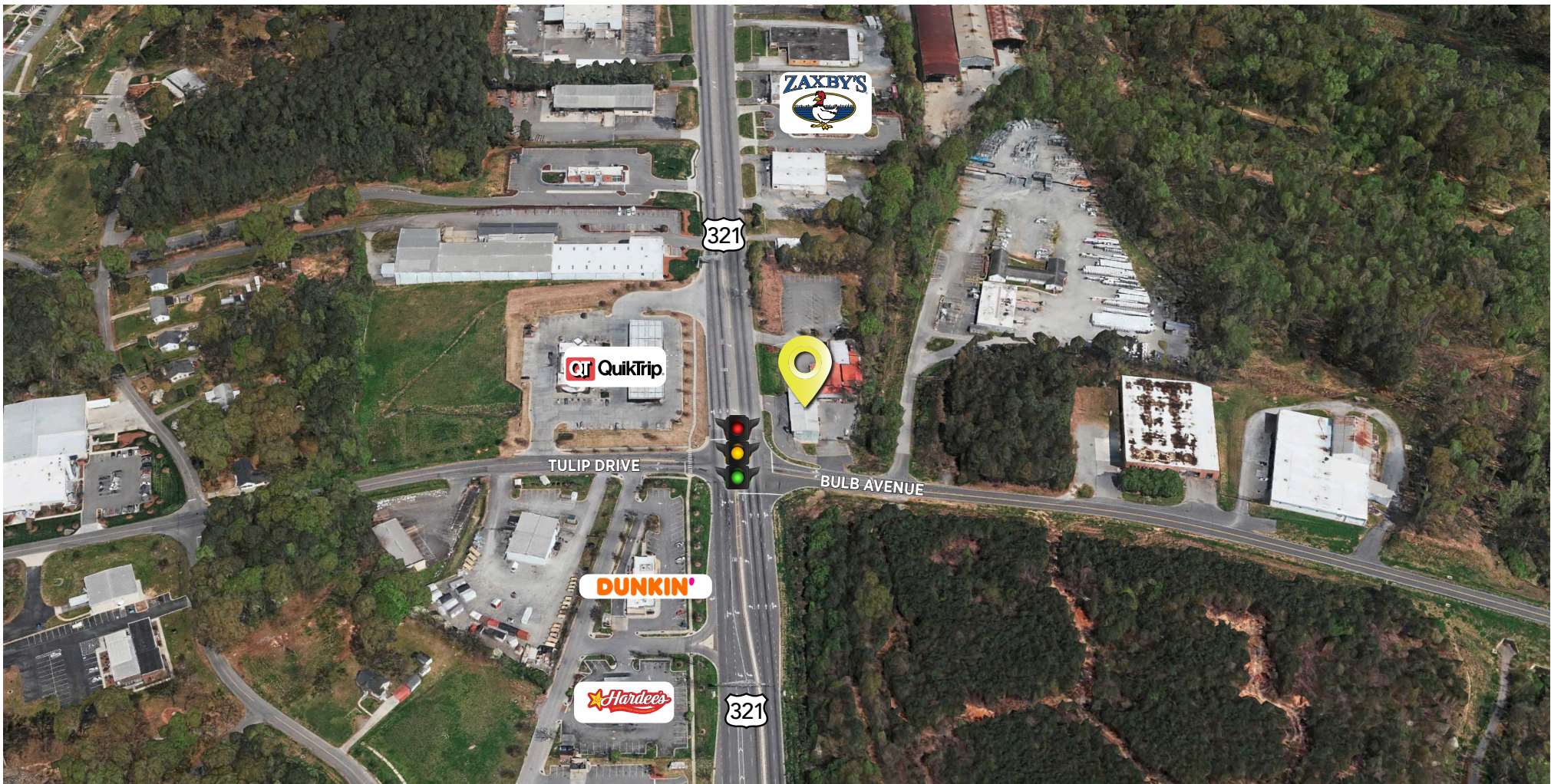
102 Main Street, Suite 110

McAdenville, NC 28101

704 971 2000



MECA
COMMERCIAL REAL ESTATE



SAM KLINE, CCIM
c 704 777 6003

skline@mecacommercial.com

MECA Commercial Real Estate
102 Main Street, Suite 110
McAdenville, NC 28101
704 971 2000



MECA
COMMERCIAL REAL ESTATE



3RD

LARGEST CITY IN
THE CHARLOTTE-
CONCORD-GASTONIA
NC-SC MSA

30+

INTERNATIONAL
COMPANIES

3^Y

ALL-AMERICAN CITY
& RECIPIENT OF THE
U.S. CONFERENCE
OF MAYORS TOP
LIVABILITY AWARD

22

MILES WEST
OF CHARLOTTE

25

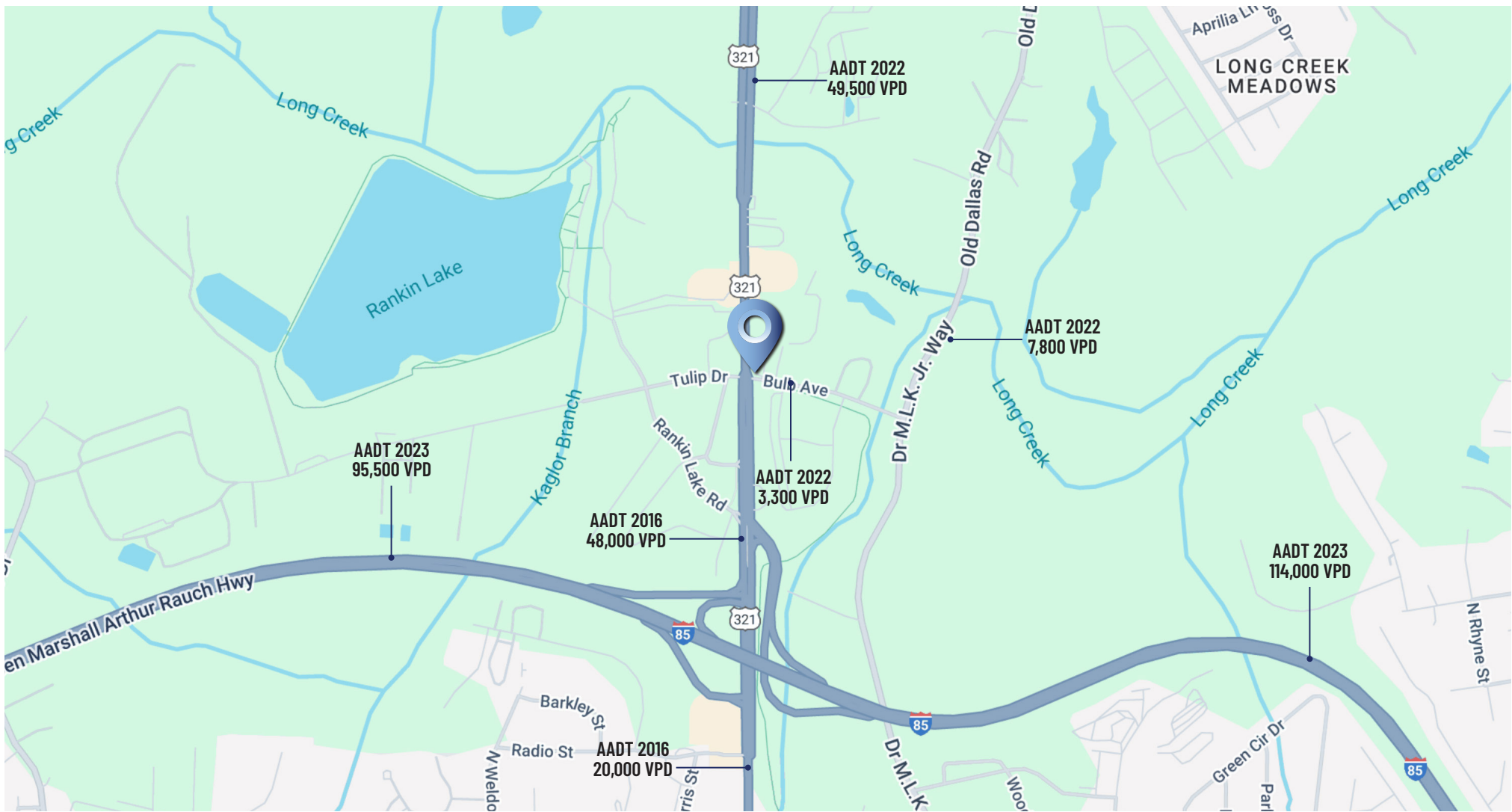
MILE VIEWS
FROM CROWDERS
MOUNTAIN

GASTONIA, NC

Gastonia is recognized as one of the area's best places to live and work with an ideal combination of location, size, and quality of life. Those factors, combined with the City's strategic location, just minutes west of Charlotte and midway between Atlanta and North Carolina's Research Triangle, attracts business and industry looking for an ideal site to locate, re-locate, or expand.

With major highways, interstates, railroads, and airports all within a 15-minute drive, Gastonia understands the importance in ease of transportation for its local businesses and residents. They continue to stay proactive by pushing plans for light rail and commuter trains.

Additionally, the city is investing in the FUSE District, Franklin Urban Sports and Entertainment District, between Loray Mills and our revitalized Historic Downtown. The FUSE District is the heart of a growing commercial district that features the best of urban living: residential choices, sports and entertainment options, offices, restaurants, retail shops, services, green spaces and more. The FUSE sports and entertainment complex will be home to a variety of venues and events, accommodating an array of sports as well as concerts, fairs, and more.



	1 MILE	3 MILES	5 MILES
DEMOGRAPHICS			
Population	2,360	39,631	91,194
Households	914	16,115	37,371
Families	543	9,609	22,920
Median Age	34.1	38.6	39.5
Average HH Size	2.52	2.38	2.39
Median HH Income	\$47,124	\$53,369	\$58,632
Average HH Income	\$69,028	\$68,961	\$76,334
Per Capita Income	\$28,053	\$28,134	\$31,441

mecacommercial.com

© 2026 Metro Realty, LLC. All rights reserved. Metro Realty, LLC fully supports the principles of the Fair Housing Act and the Equal Opportunity Act.
 *The land acreage and/or building square footage was obtained from the County's Geographical Information System or other electronic resources. For exact square footage and/or acreage, we recommend that prior to purchase, a prospective Buyer/Tenant obtain a boundary survey or have the building measured professionally.

