



STANTON ROAD  
CAPITAL

Regus

NOW LEASING

# UNION PARK4

6975 UNION PARK AVENUE  
SALT LAKE CITY, UTAH



CUSHMAN &  
WAKEFIELD

UNION PARK 4  
6975 UNION PARK AVENUE  
SALT LAKE CITY, UTAH

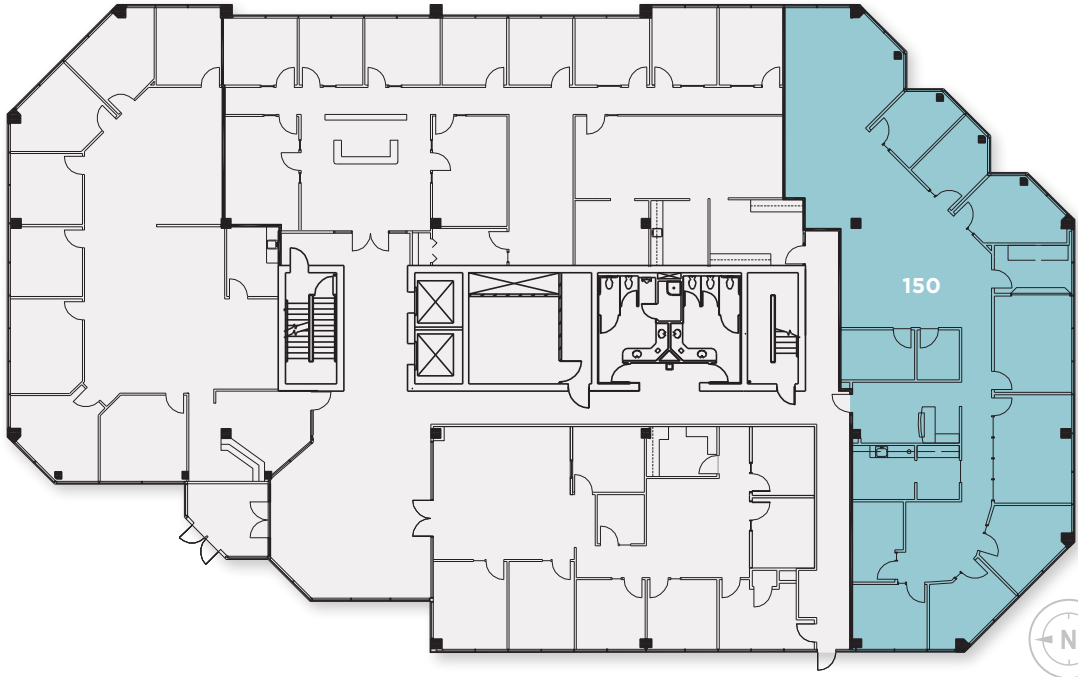


Each **Union Park** building has a two-story open atrium lobby. The buildings have stunning views of the Salt Lake Valley. Covered parking is available and the buildings are equipped with high-speed fiber optic network and Internet connectivity, as well as centralized security and surveillance.

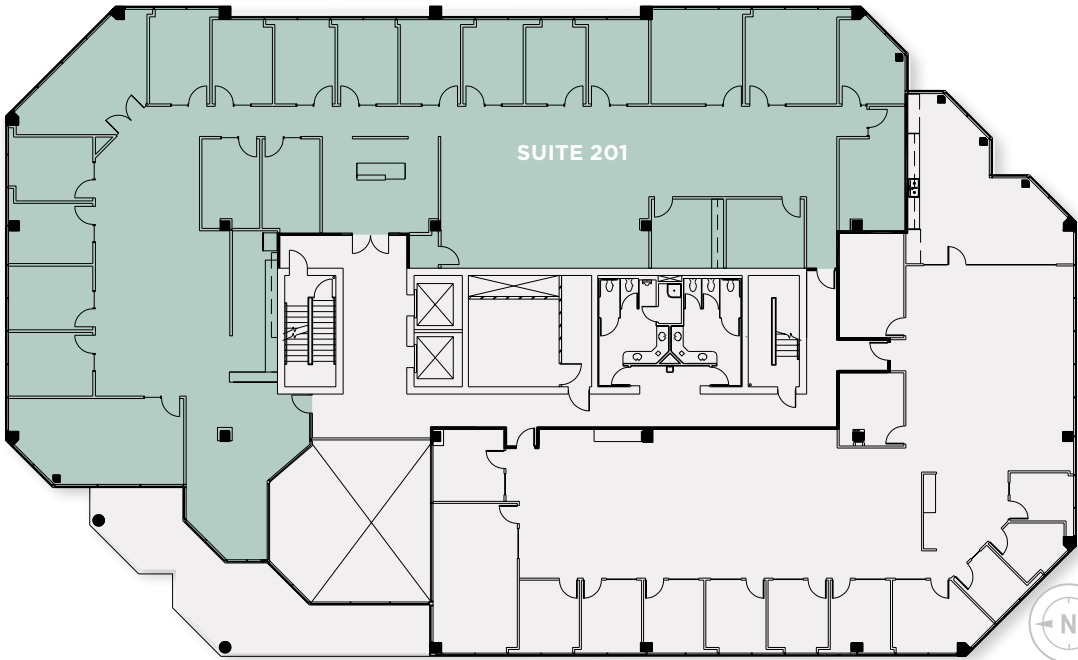
\$28.<sup>50</sup>  
PSF, FULL SERVICE  
CLASS A  
FINISHES



FIRST FLOOR	
SUITE:	150
SIZE:	2,326 RSF
AVAILABLE:	Immediately



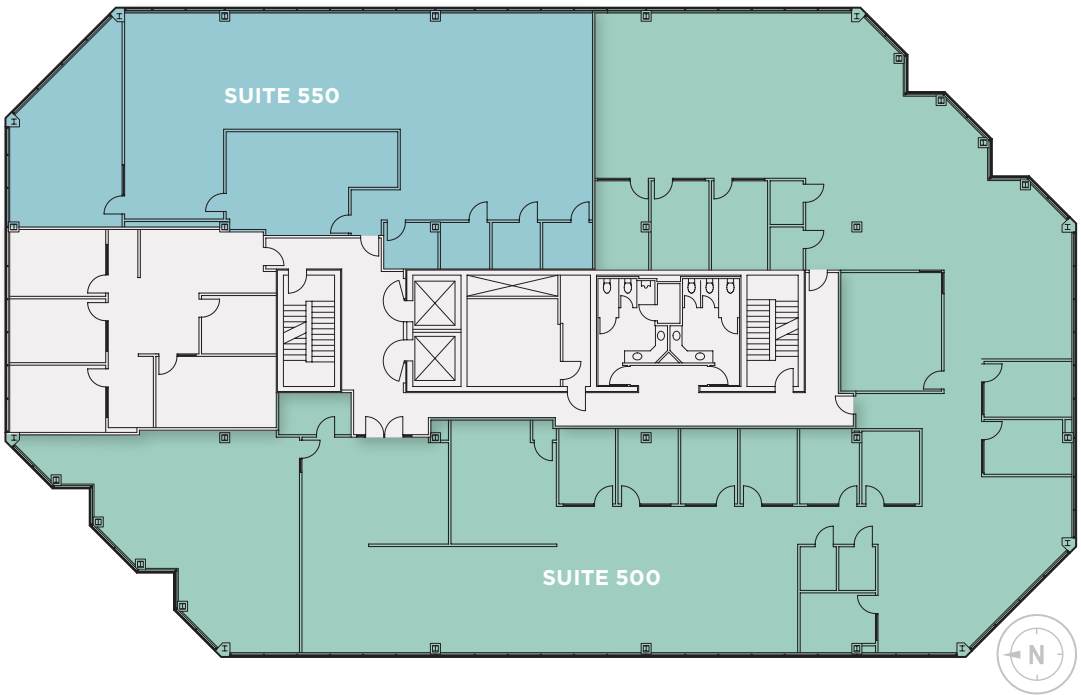
SECOND FLOOR	
SUITE:	201
SIZE:	9,560 RSF
AVAILABLE:	Immediately



FOURTH FLOOR	
SUITE:	460
SIZE:	3,377 RSF
AVAILABLE:	Immediately
SUITE:	470
SIZE:	6,814 RSF
AVAILABLE:	Immediately



FIFTH FLOOR	
SUITE:	500
SIZE:	11,241 RSF
AVAILABLE:	11/1/2025
SUITE:	550
SIZE:	3,575 RSF
AVAILABLE:	Immediately







## SURROUNDING AREA

Conveniently located in the center of Salt Lake, within minutes of fine residential neighborhoods as well as the major freeway system, Fashion Place Mall and numerous restaurants and lodging.

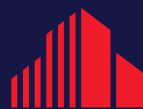
### Contact Info

#### Dana Baird, CCIM

Executive Managing Director  
+1 801 303 5526  
dana.baird@cushwake.com

#### Mike Richmond

Executive Managing Director  
+1 801 303 5434  
mike.richmond@cushwake.com



## CUSHMAN & WAKEFIELD

170 South Main Street, Suite 1600  
Salt Lake City, UT 84101  
+1 801 322 2000  
cushmanwakefield.com



STANTON ROAD  
CAPITAL

©2025 Cushman & Wakefield. All rights reserved. The information contained in this communication is strictly confidential. This information has been obtained from sources believed to be reliable but has not been verified. NO WARRANTY OR REPRESENTATION, EXPRESS OR IMPLIED, IS MADE AS TO THE CONDITION OF THE PROPERTY (OR PROPERTIES) REFERENCED HEREIN OR AS TO THE ACCURACY OR COMPLETENESS OF THE INFORMATION CONTAINED HEREIN, AND SAME IS SUBMITTED SUBJECT TO ERRORS, OMISSIONS, CHANGE OF PRICE, RENTAL OR OTHER CONDITIONS, WITHDRAWAL WITHOUT NOTICE, AND TO ANY SPECIAL LISTING CONDITIONS IMPOSED BY THE PROPERTY OWNER(S). ANY PROJECTIONS, OPINIONS OR ESTIMATES ARE SUBJECT TO UNCERTAINTY AND DO NOT SIGNIFY CURRENT OR FUTURE PROPERTY PERFORMANCE. G:\SLT\Shared\Apps\Gigas\1 - Projects\Richmond, Mike\1 - Flyers\Union Park\\_2025Update