



RETAIL SPACE AVAILABLE FOR LEASE

# VILLAGE GROVE

1927 N Gilbert Rd | Mesa, AZ 85203

## Space Available:

Suite 9 ±720 SqFt

Suite 13 ±5,595 SqFt (rate negotiable)

Space offered at: **\$22/sf NNN**

For more information please contact:

**Heather Knoke**

Property Manager

602.252.9300 | heatherk@casehuff.com

Professionally Managed & Leased by



**CASE  
HUFF  
& ASSOCIATES**

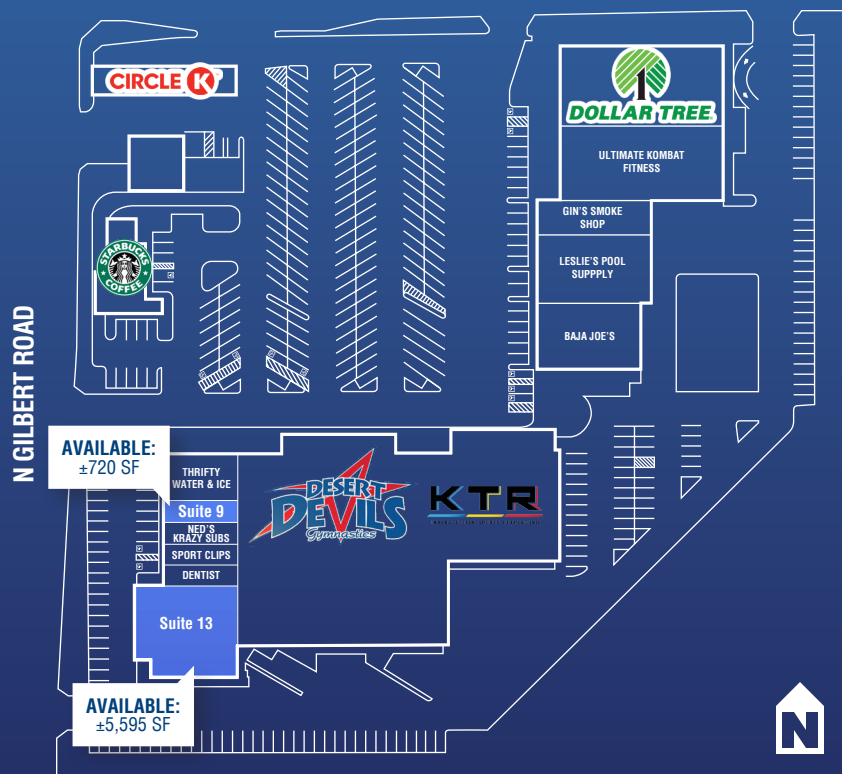
www.casehuff.com

## SEC of Gilbert Road and McKellips Road

- Located next to a dense residential area
- Signage available on Gilbert Road
- 1 mile south of Loop 202

## SITE PLAN:

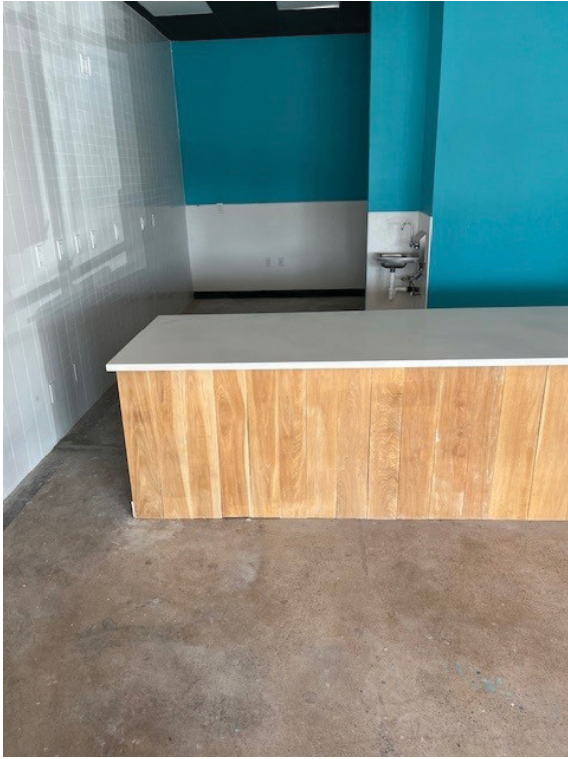
E MCKELLIPS ROAD





# VILLAGE GROVE

## SUITE 9 PHOTOS



Professionally Managed & Leased by



[www.casehuff.com](http://www.casehuff.com)

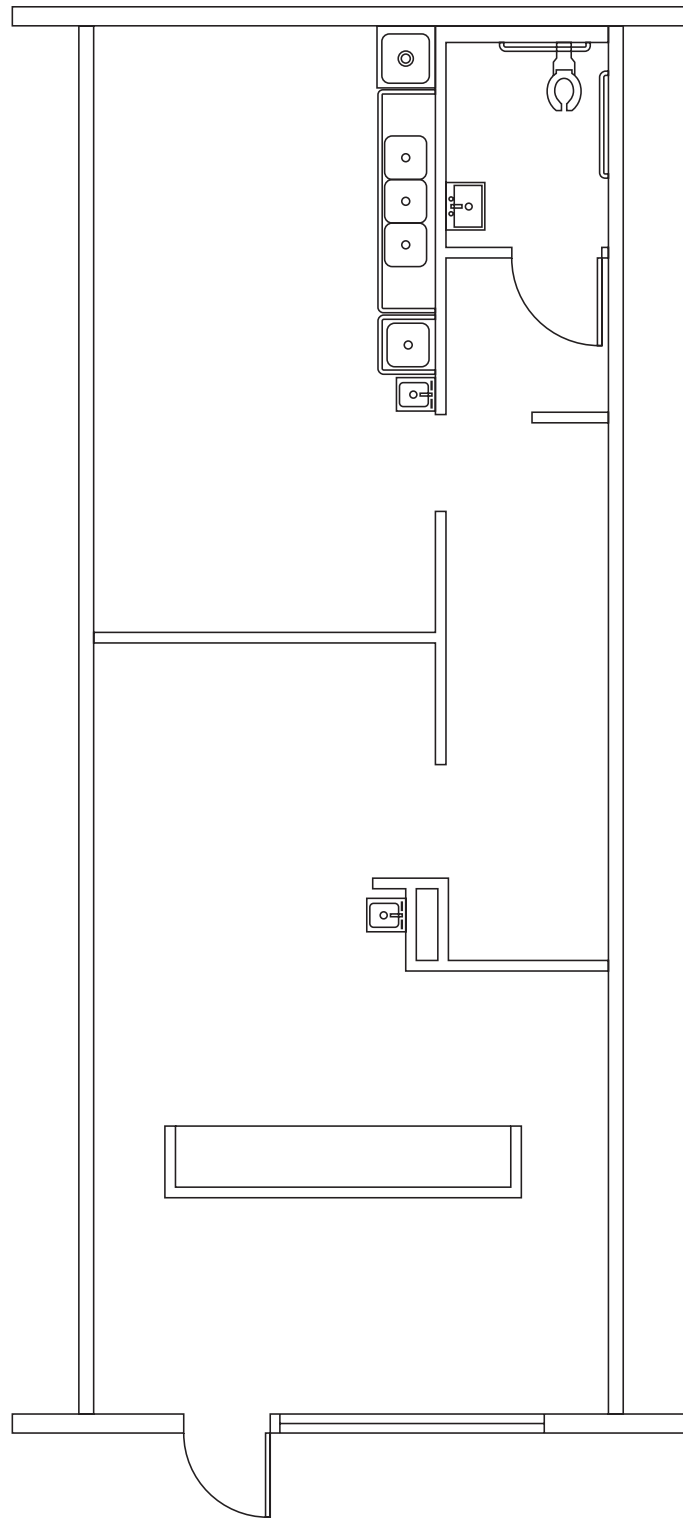
DISCLAIMER: No warranty or representation, express or implied, is made to the accuracy of the information contained herein and same is submitted subject to errors, omissions, change of price, rental or other conditions, withdrawal without notice and to any special listing conditions imposed by our principals.

# VILLAGE GROVE

## SUITE FLOORPLAN



**Suite 9 - ±720 SF**



Professionally Managed & Leased by



[www.casehuff.com](http://www.casehuff.com)

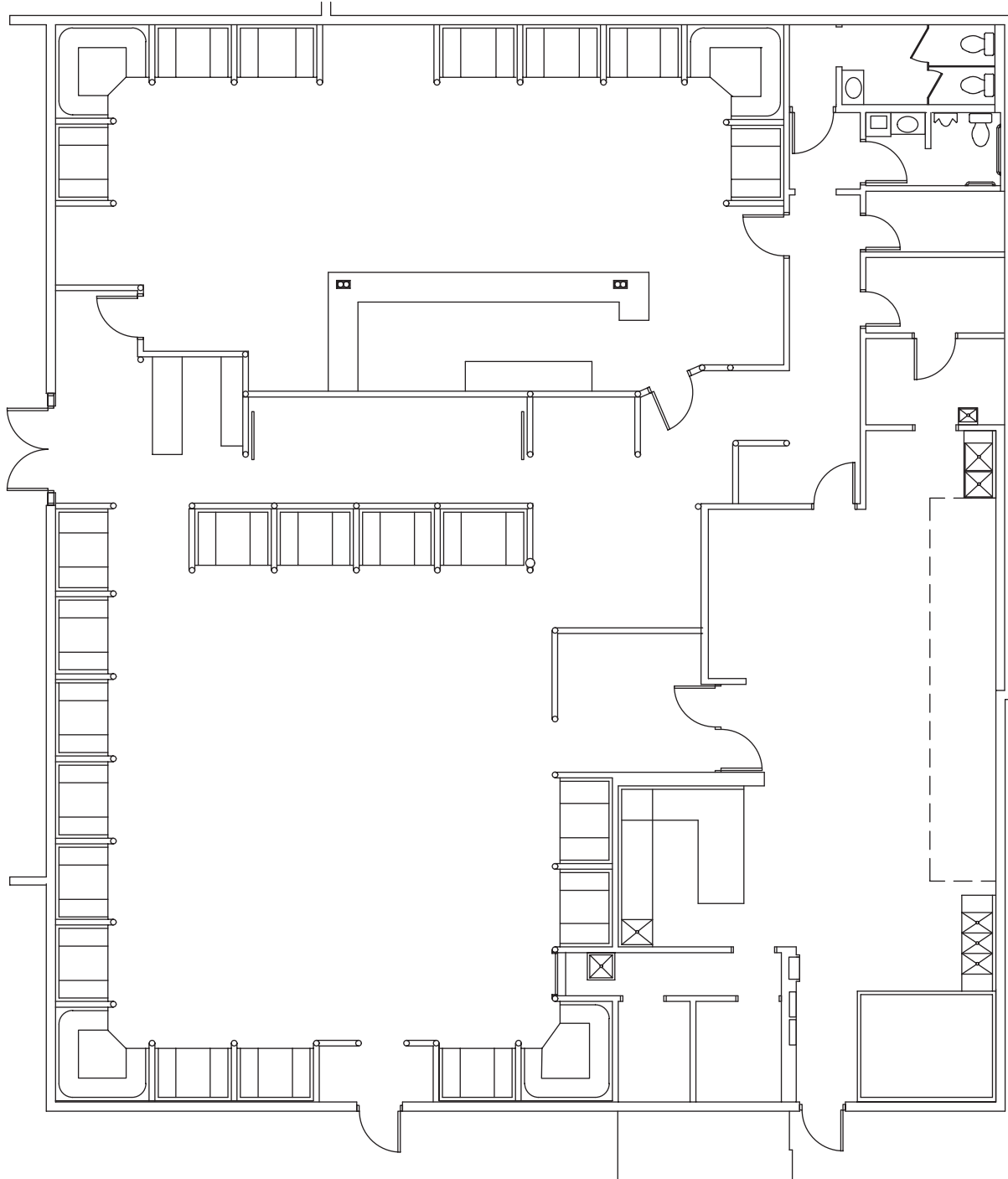
DISCLAIMER: No warranty or representation, express or implied, is made to the accuracy of the information contained herein and same is submitted subject to errors, omissions, change of price, rental or other conditions, withdrawal without notice and to any special listing conditions imposed by our principals.

# VILLAGE GROVE

## SUITE FLOORPLAN



**Suite 13 - ±5,595 SF**



Professionally Managed & Leased by



[www.casehuff.com](http://www.casehuff.com)

DISCLAIMER: No warranty or representation, express or implied, is made to the accuracy of the information contained herein and same is submitted subject to errors, omissions, change of price, rental or other conditions, withdrawal without notice and to any special listing conditions imposed by our principals.

# VILLAGE GROVE

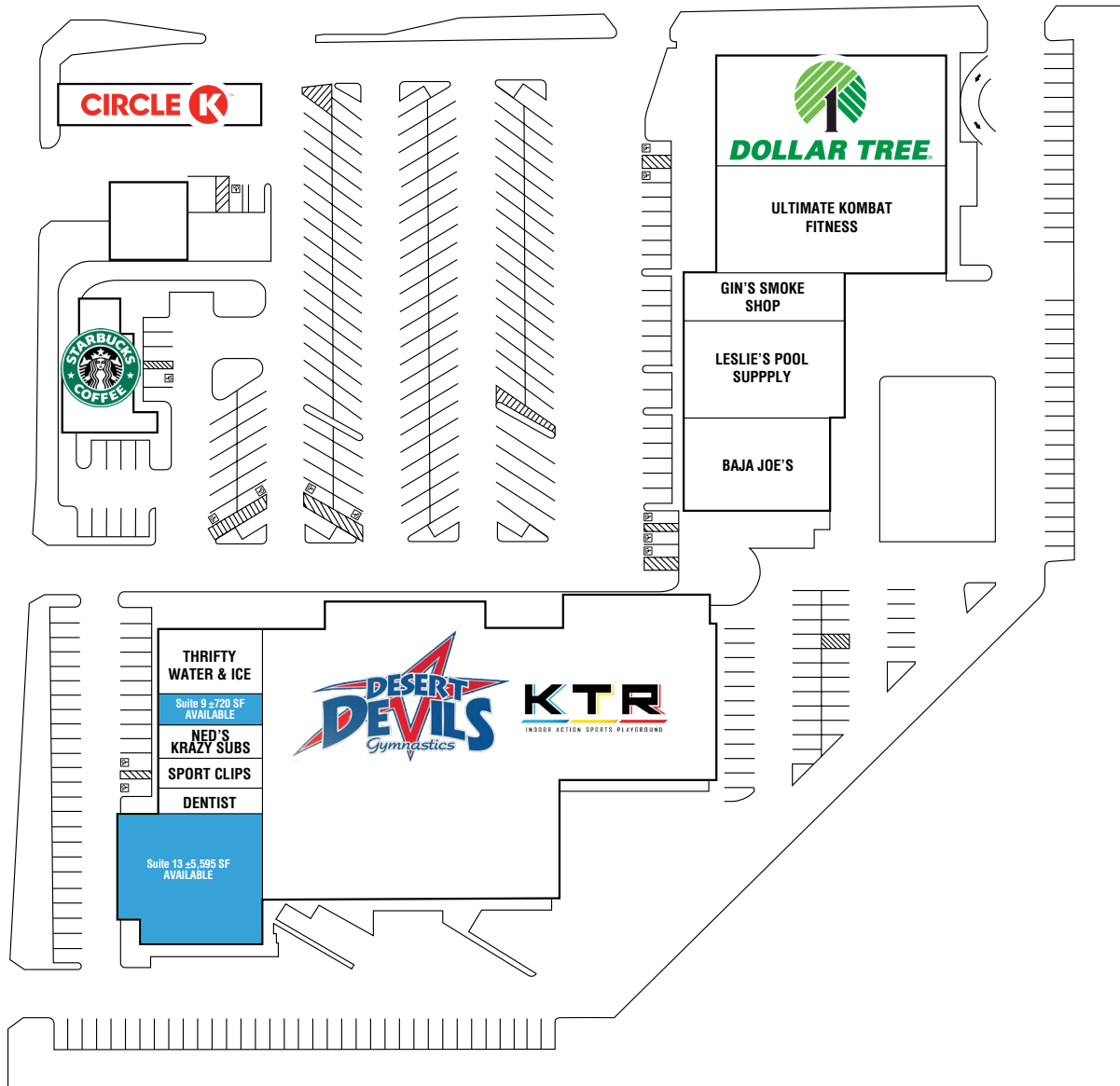
## SPACE PLAN

☐ OCCUPIED SPACE  
☒ AVAILABLE SPACE



E McKELLIPS ROAD

N GILBERT ROAD



### Space Available for Lease:

Suite 9            ±720 SqFt  
 Suite 13           ±5,595 SqFt (rate negotiable)

Space offered at: **\$22/sf NNN**

For more information please contact:

**Heather Knoke**

Property Manager  
602.252.9300 | [heatherk@casehuff.com](mailto:heatherk@casehuff.com)

OR

**Jeremy Johnson**

Senior Property Manager  
602.252.9300 | [jj@casehuff.com](mailto:jj@casehuff.com)

Professionally Managed & Leased by



[www.casehuff.com](http://www.casehuff.com)

DISCLAIMER: No warranty or representation, express or implied, is made to the accuracy of the information contained herein and same is submitted subject to errors, omissions, change of price, rental or other conditions, withdrawal without notice and to any special listing conditions imposed by our principals.