

# INDUSTRIAL CONDOMINIUM FOR SALE

## STOCKTON AIRPORT BUSINESS PARK

4646 QANTAS LANE, B11, STOCKTON, CA



**AVAILABLE SF:** 3,840± SF  
**POWER:** 200 AMP, 277/480 V, 3 Phase  
**DOORS:** One (1) grade level (12' x 14')  
**ZONING :** I-G Industrial General (City of Stockton)

### COMMENTS:

- Approximately 700± square feet of office space
- Concrete Tilt Up construction with 24± min. clear height
- Fully sprinklered with T-8 lighting and skylights in warehouse
- Mezzanine/storage above office space
- Power/electrical outlets and airlines distributed throughout shop area
- Clear span - no interior columns
- Professionally managed/maintained industrial center



- Access to I-5 Arch/Sperry Connector
- Located at Arch Road/Hwy 99 interchange in South Stockton

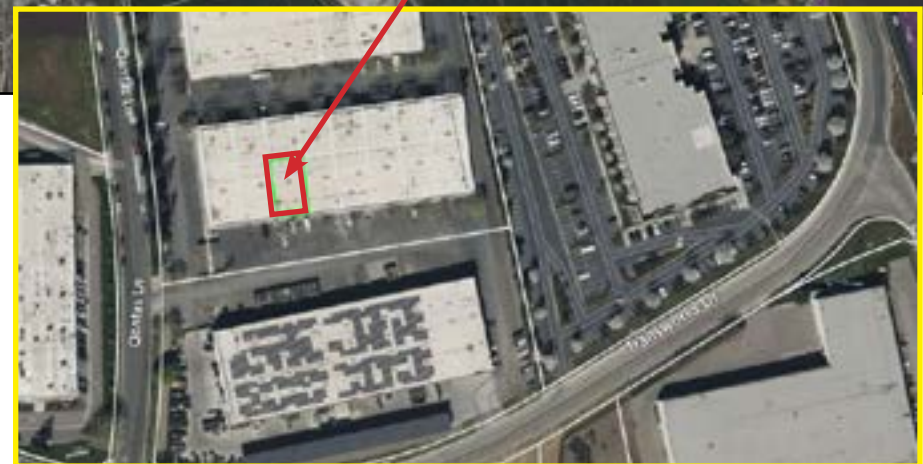
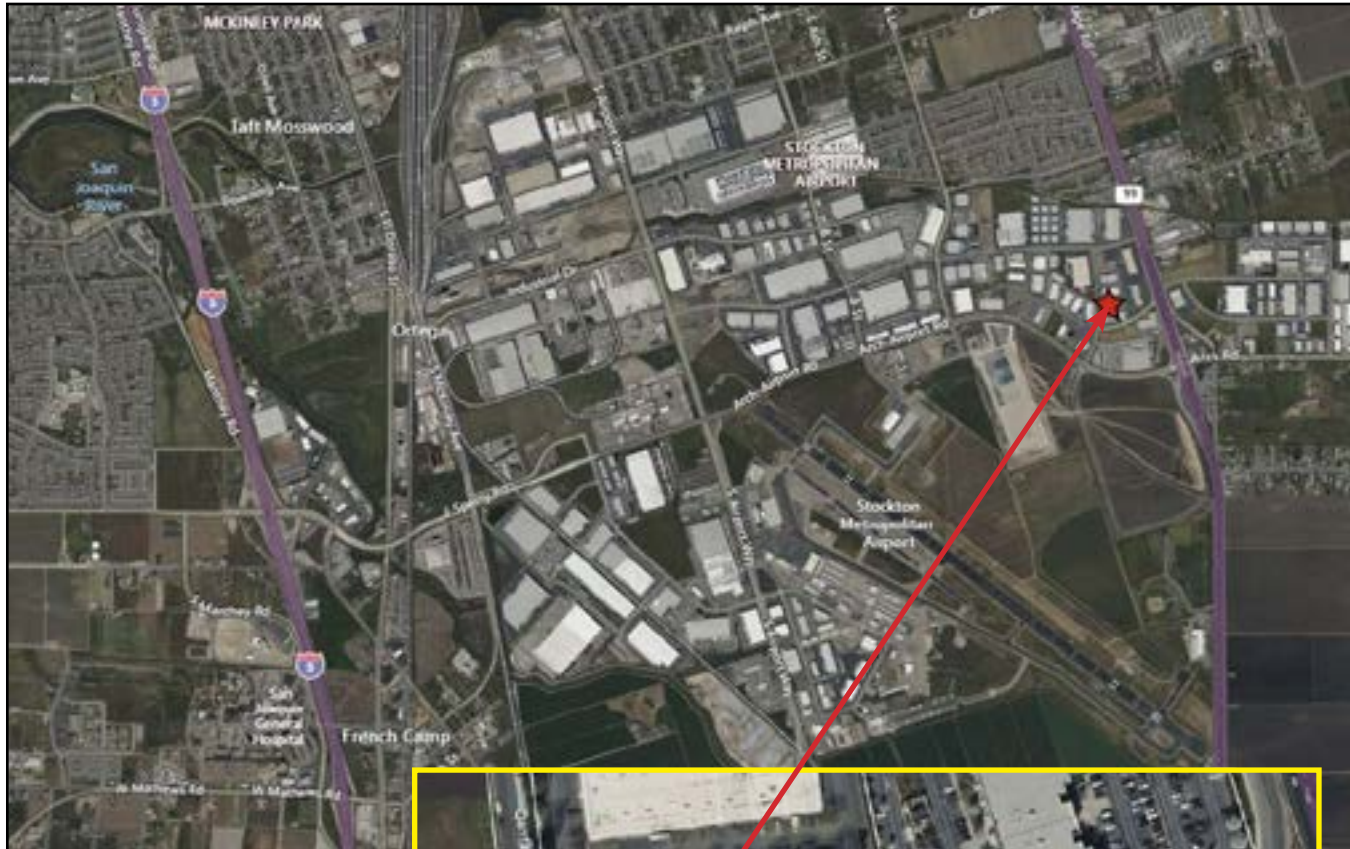
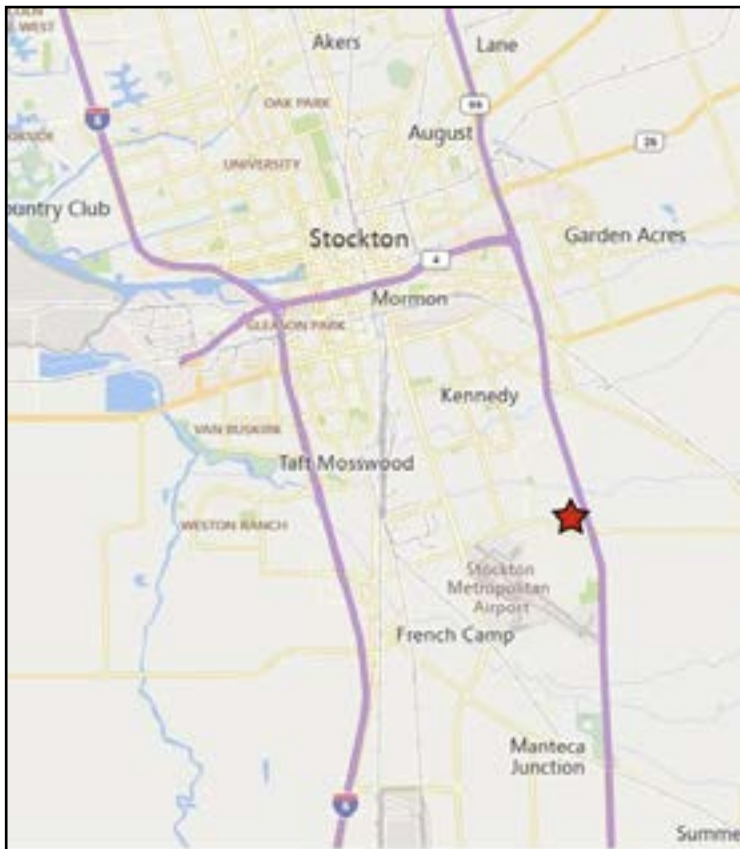
**SALE PRICE: \$633,600.00**

### Jim Martin, SIOR

BRE #01214270  
jmartin@lee-associates.com  
D 209.983.4088  
C 925.352.6948

All information furnished regarding property for sale, rental or financing is from sources deemed reliable, but no warranty or representation is made to the accuracy thereof and same is submitted to errors, omissions, change of price, rental or other conditions prior to sale, lease or financing or withdrawal without notice. No liability of any kind is to be imposed on the broker herein.

# INDUSTRIAL CONDOMINIUM FOR SALE STOCKTON AIRPORT BUSINESS PARK 4646 QANTAS LANE, B11, STOCKTON, CA



**Jim Martin, SIOR**  
BRE #01214270  
jmartin@lee-associates.com  
D 209.983.4088  
C 925.352.6948

All information furnished regarding property for sale, rental or financing is from sources deemed reliable, but no warranty or representation is made to the accuracy thereof and same is submitted to errors, omissions, change of price, rental or other conditions prior to sale, lease or financing or withdrawal without notice. No liability of any kind is to be imposed on the broker herein.