



# 544

LAKEVIEW  
PARKWAY

VERNON HILLS, IL

## A New Era

**Transformation**  
underway in a vibrant  
mixed-use destination

CBRE



# In With the New



## Upgraded Office Experience

Step into a modernized lobby and common areas that set the tone for innovation and community. Enjoy our new tenant lounge and game room, perfect for relaxation and socializing. Unwind on our outdoor patio with stunning views, or break a sweat in our state-of-the-art fitness center. Plus, impress clients and colleagues with our cutting-edge conference center. Join us and be part of an enhanced workplace experience in the middle of the transformed and dynamic Vernon Hills!



## New Capital Improvements

- › Modernized lobby and common areas
- › Tenant lounge and game room
- › Outdoor patio with a lake view
- › State of the art fitness center
- › Cutting edge conference center

**544 LAKEVIEW PARKWAY**

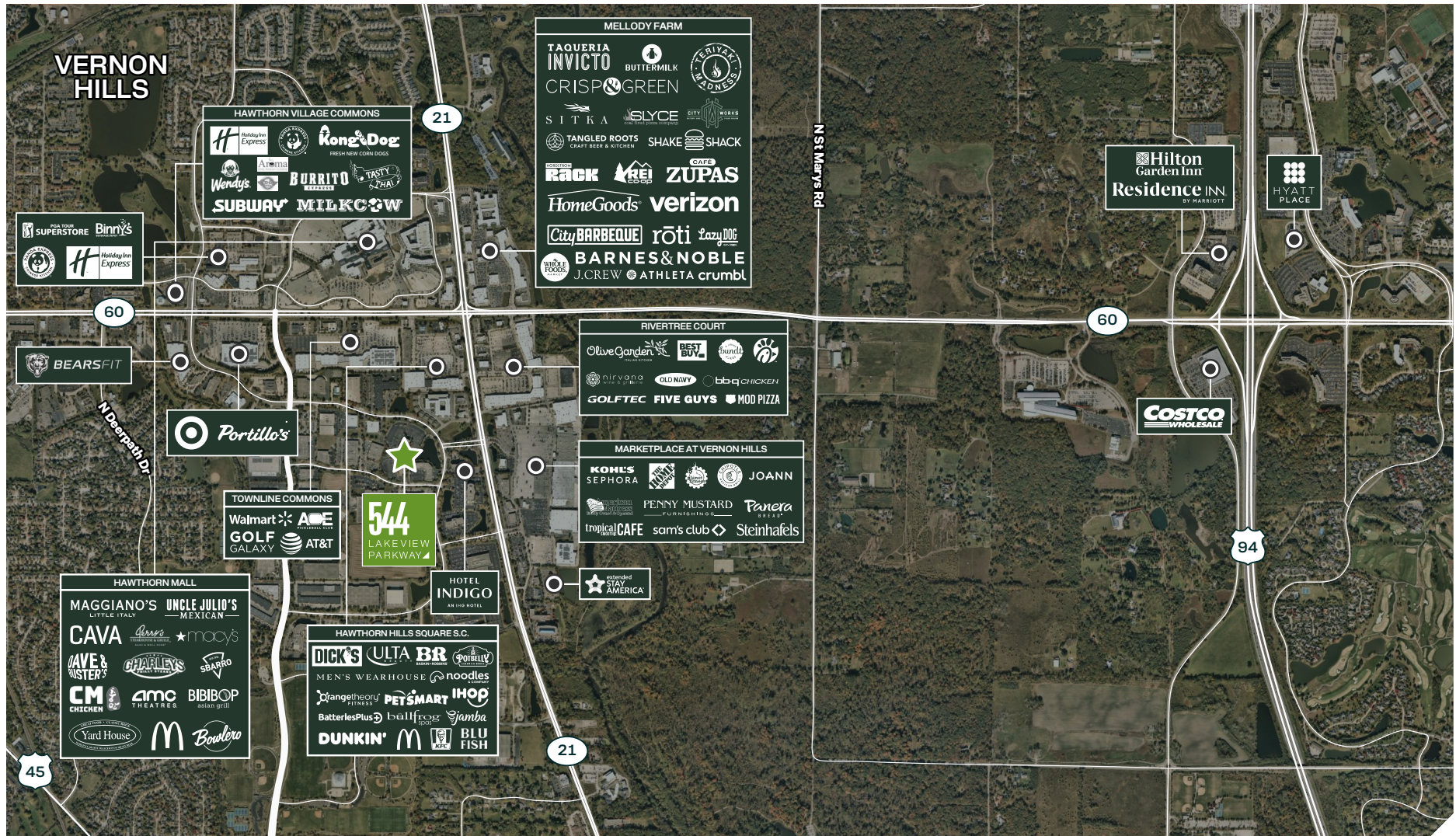




# The Place to Be

## 544 Lakeview Parkway

The surrounding Vernon Hills area is also undergoing a transformation, drawing in new residents with access to premier retail, dining, and entertainment. 544 Lakeview is at the center of the Lake County retail hub and also offers convenient access to major roads and expressways, putting all of Chicagoland at reach.





# 544

## LAKEVIEW PARKWAY

VERNON HILLS, IL

# A New Era

### LEASING CONTACTS

**Dan Graham**

+1 847 706 4032

[dan.graham@cbre.com](mailto:dan.graham@cbre.com)

**Rob Graham**

+1 847 706 4034

[rob.graham@cbre.com](mailto:rob.graham@cbre.com)

**Michael Graham**

+1 847 706 4033

[michael.graham@cbre.com](mailto:michael.graham@cbre.com)

© 2025 CBRE, Inc. All rights reserved. This information has been obtained from sources believed reliable but has not been verified for accuracy or completeness. CBRE, Inc. makes no guarantee, representation or warranty and accepts no responsibility or liability as to the accuracy, completeness, or reliability of the information contained herein. You should conduct a careful, independent investigation of the property and verify all information. Any reliance on this information is solely at your own risk. CBRE and the CBRE logo are service marks of CBRE, Inc. All other marks displayed on this document are the property of their respective owners, and the use of such marks does not imply any affiliation with or endorsement of CBRE. Photos herein are the property of their respective owners. Use of these images without the express written consent of the owner is prohibited. PMSStudio\_February2025

# CBRE

Zeon Partners  
Capital Investments

