

TLG

COMMERCIAL REAL ESTATE

RESTAURANT PROPERTY FOR LEASE



Day's Inn Restaurant Lease Space

2900 N Monroe St.

Tallahassee, FL 32303

MARK BEAUDOIN

Broker/Sales Associate
850.545.0395
mbeaudoin@tlgproperty.com

TLG REAL ESTATE SERVICES

3520 Thomasville Road, Suite 200
Tallahassee, FL 32309
O: 850.385.6363



EXECUTIVE SUMMARY

DAY'S INN RESTAURANT LEASE SPACE

2900 N MONROE ST, TALLAHASSEE, FL 32303



OFFERING SUMMARY

Available SF: 3,500 SF

Lease Rate: \$12.00 SF/yr (NNN)

Year Built: 1985

APN: 21-14-51-000-0330

Zoning: CP (Commercial Parkway)

PROPERTY OVERVIEW

Great location for a family restaurant, bar and grille. Located inside of the current Days Inn and Suites this space is suitable for many restaurant uses. Previously used for a bar and lounge, the space is ready to go with upgrades. Sports Bar, Pizza Kitchen, Hamburger Bar. Take advantage of the many customers staying at the Days Inn and utilizing their conference and meeting rooms. Great catering opportunity!

Traffic counts: 40,500 AADT at N Monroe St. & Lakeshore Dr. & 39,500 AADT at N Monroe St. & I-10.

LOCATION OVERVIEW

Located in the heavily traveled N. Monroe Corridor adjacent to I-10. Surrounded by retail, hospitality and offices, this location offers high visibility.

[Click for Zoning Information](#)

Mark Beaudoin
850.545.0395
mbeaudoin@tlgproperty.com

TLG REAL ESTATE SERVICES
3520 Thomasville Road, Suite 200, Tallahassee, FL 32309
850.385.6363

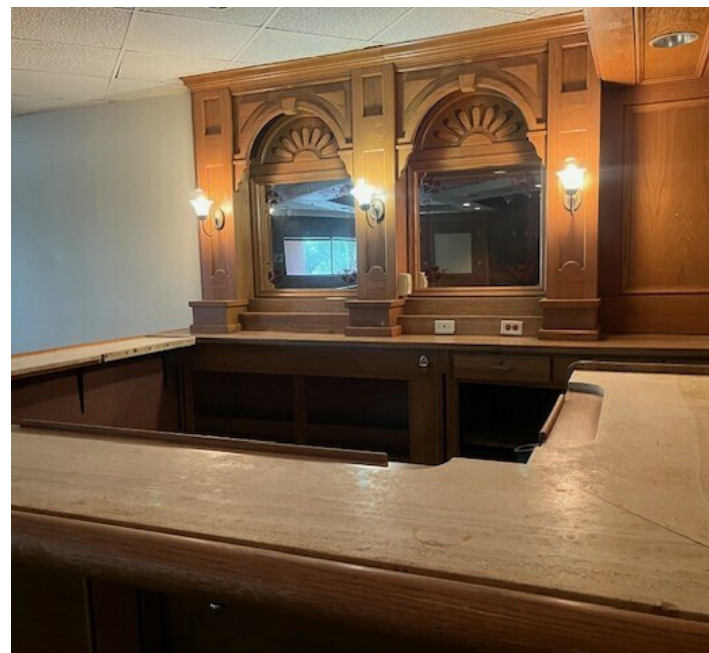




ADDITIONAL PHOTOS

DAY'S INN RESTAURANT LEASE SPACE

2900 N MONROE ST, TALLAHASSEE, FL 32303



Mark Beaudoin
850.545.0395
mbeaudoin@tlgproperty.com

TLG REAL ESTATE SERVICES
3520 Thomasville Road, Suite 200, Tallahassee, FL 32309
850.385.6363

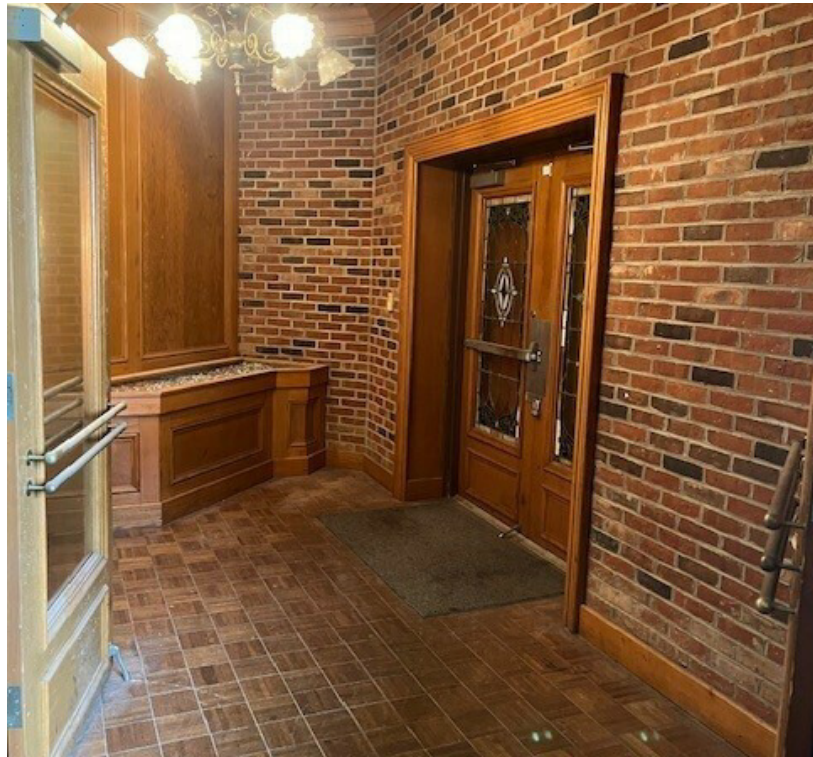




ADDITIONAL PHOTOS

DAY'S INN RESTAURANT LEASE SPACE

2900 N MONROE ST, TALLAHASSEE, FL 32303



Mark Beaudoin
850.545.0395
mbeaudoin@tlgproperty.com

TLG REAL ESTATE SERVICES

3520 Thomasville Road, Suite 200, Tallahassee, FL 32309

850.385.6363

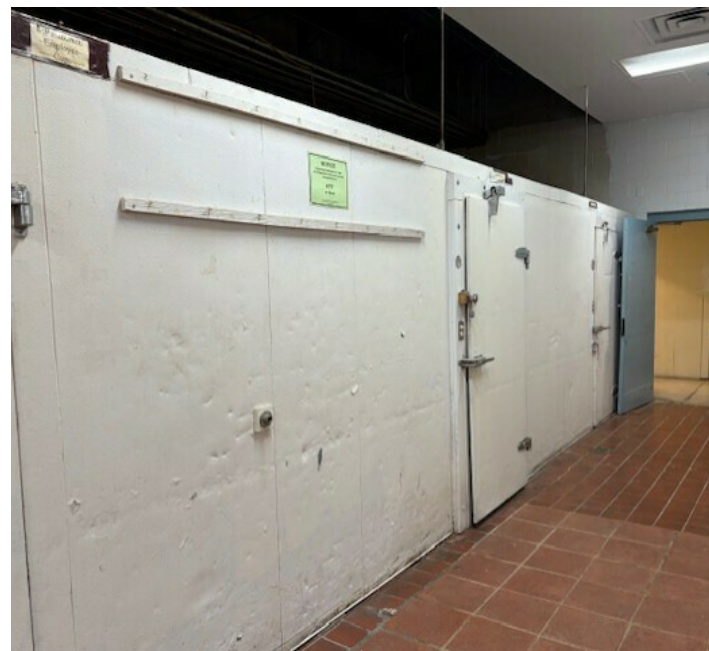




ADDITIONAL PHOTOS

DAY'S INN RESTAURANT LEASE SPACE

2900 N MONROE ST, TALLAHASSEE, FL 32303



Mark Beaudoin
850.545.0395
mbeaudoin@tlgproperty.com

TLG REAL ESTATE SERVICES
3520 Thomasville Road, Suite 200, Tallahassee, FL 32309
850.385.6363





RETAILER MAP

DAY'S INN RESTAURANT LEASE SPACE

2900 N MONROE ST, TALLAHASSEE, FL 32303



Mark Beaudoin
850.545.0395
mbeaudoin@tlgproperty.com

TLG REAL ESTATE SERVICES
3520 Thomasville Road, Suite 200, Tallahassee, FL 32309
850.385.6363

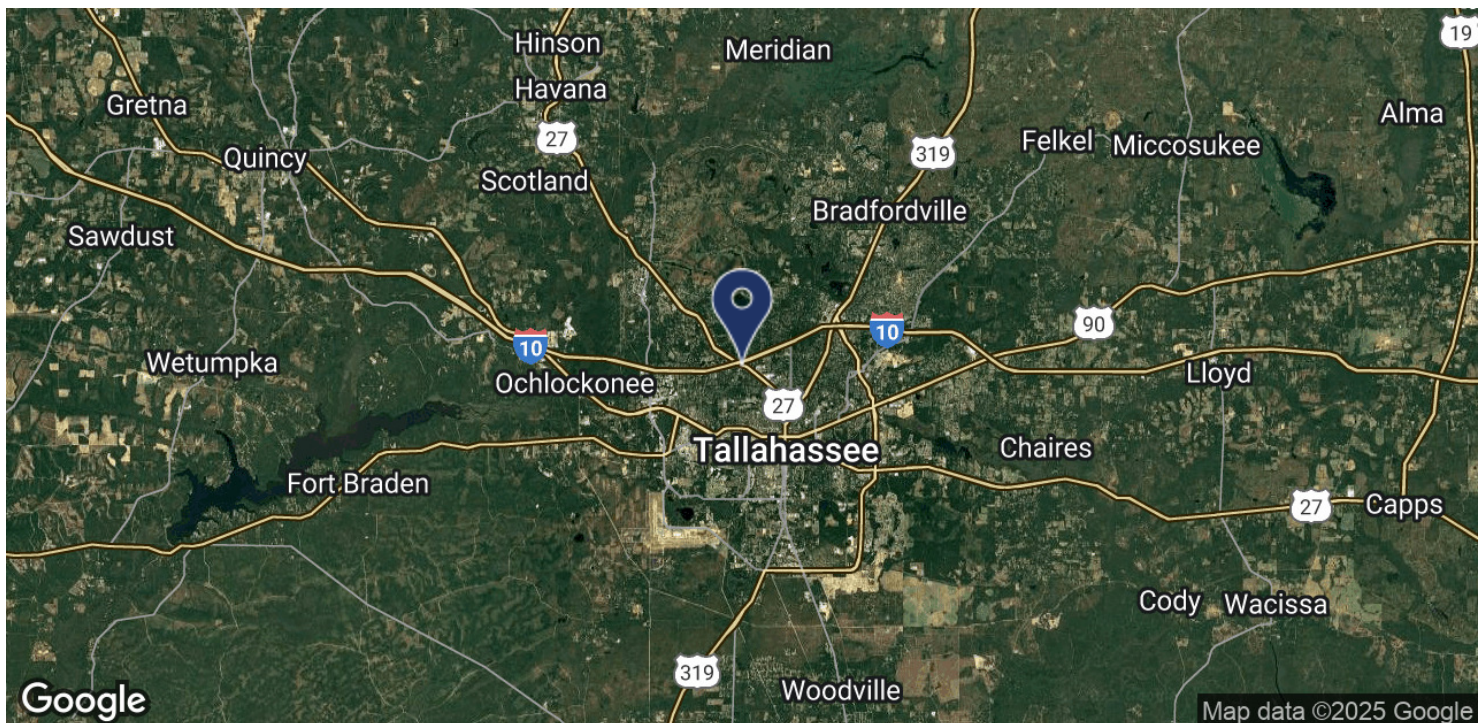
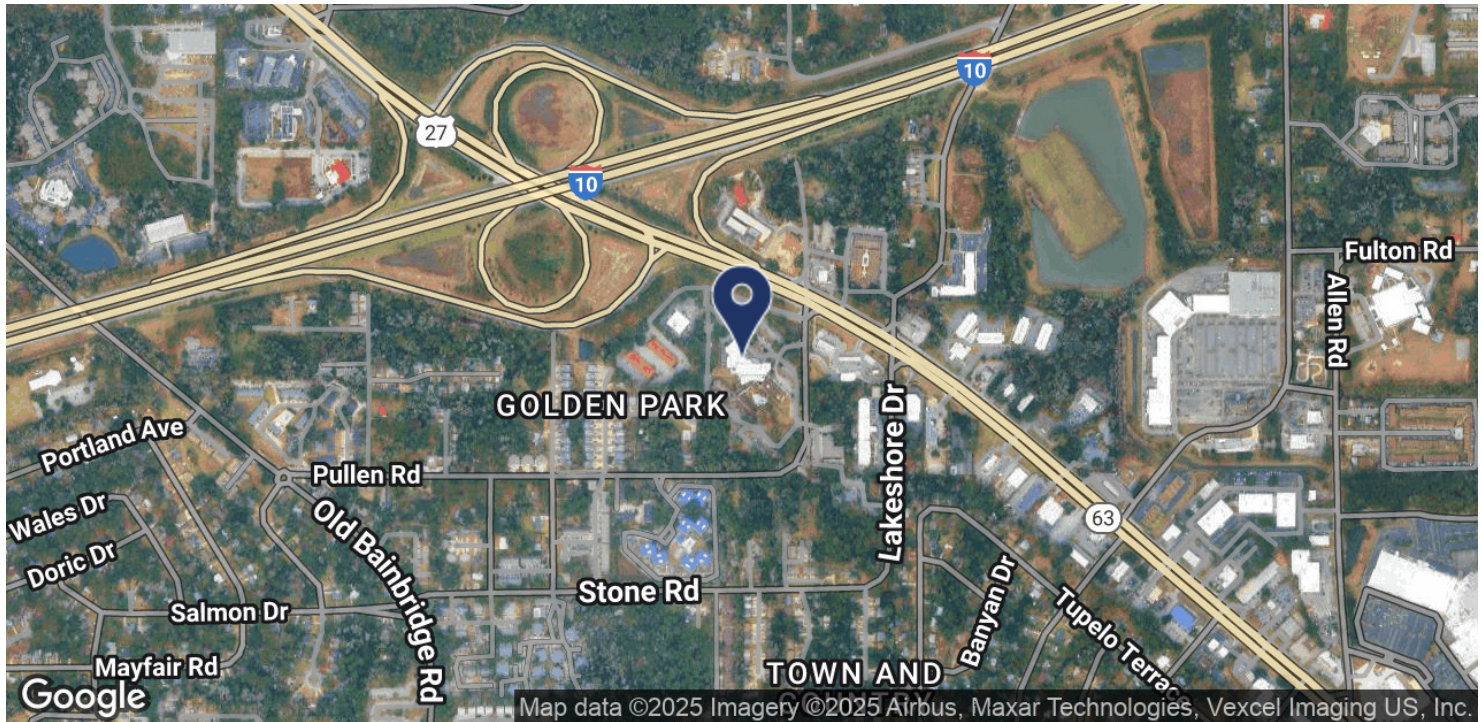




LOCATION MAP

DAY'S INN RESTAURANT LEASE SPACE

2900 N MONROE ST, TALLAHASSEE, FL 32303



Mark Beaudoin
850.545.0395
mbeaudoin@tlgproperty.com

TLG REAL ESTATE SERVICES

3520 Thomasville Road, Suite 200, Tallahassee, FL 32309

850.385.6363

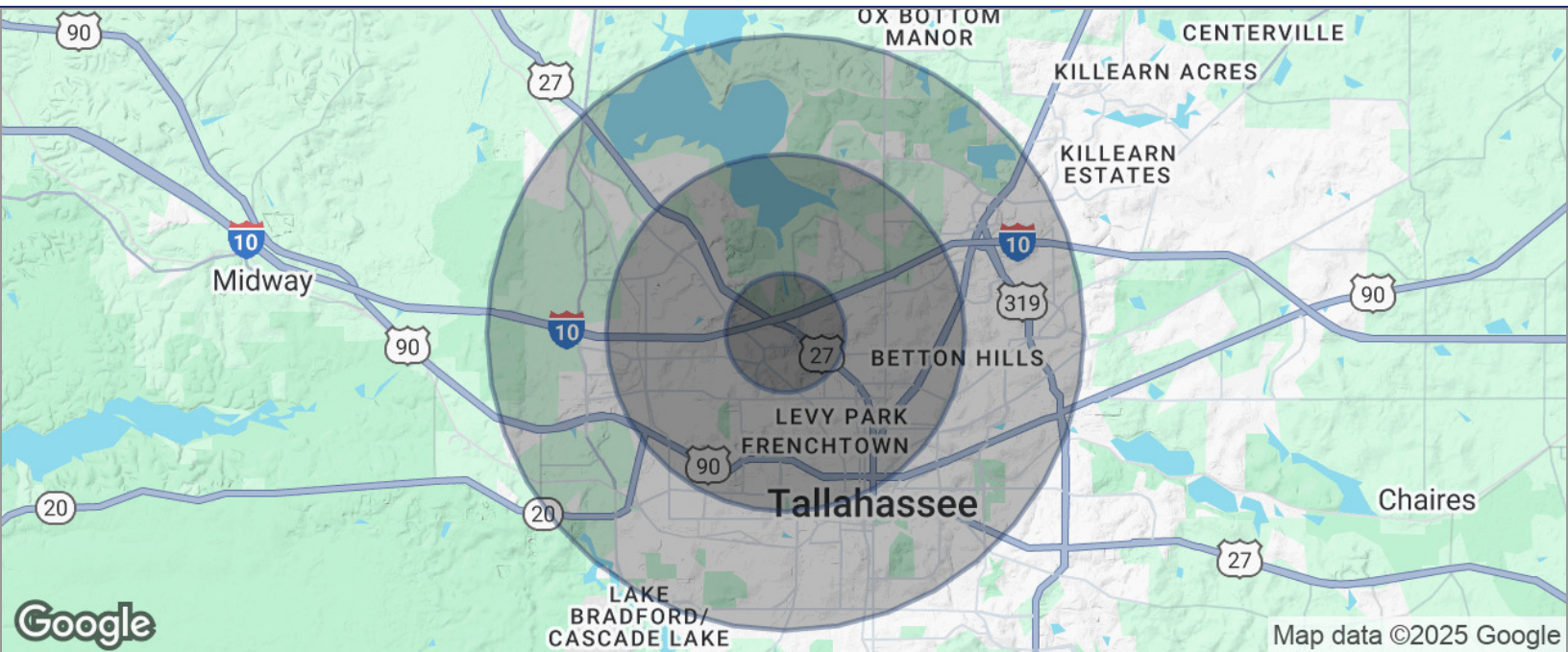




DEMOGRAPHICS MAP

DAY'S INN RESTAURANT LEASE SPACE

2900 N MONROE ST, TALLAHASSEE, FL 32303



POPULATION	1 MILE	3 MILES	5 MILES
TOTAL POPULATION	8,614	89,507	153,275
MEDIAN AGE	37	33	35
MEDIAN AGE (MALE)	36	32	34
MEDIAN AGE (FEMALE)	38	33	35
HOUSEHOLDS & INCOME	1 MILE	3 MILES	5 MILES
TOTAL HOUSEHOLDS	3,714	37,078	64,809
# OF PERSONS PER HH	2.3	2.4	2.4
AVERAGE HH INCOME	\$82,507	\$72,390	\$72,898
AVERAGE HOUSE VALUE	\$224,311	\$243,694	\$269,344

* Demographic data derived from 2020 ACS - US Census

Mark Beaudoin
 850.545.0395
mbeaudoin@tlgproperty.com

TLG REAL ESTATE SERVICES
 3520 Thomasville Road, Suite 200, Tallahassee, FL 32309
 850.385.6363

