

A 3,264 SQUARE FOOT
BUILDING FOR SALE

200
MONTEREY AVENUE

CAPITOLA, CA

Do not
Disturb Tenants


View Video

CAPITAL MARKETS
NEWMARK

GABE REGALADO
408.455.4913
gabe.regalado@nmrk.com
RE Lic. #02008286

PAUL ZECH
831.247.3007
paul.zech@cbnorcal.com
RE Lic. #01965059

>> Description

200
MONTEREY AVENUE

CAPITOLA, CA

A once in a lifetime fantastic opportunity for anyone looking to invest in a prime commercial location with a rich history and multiple potential uses. Its proximity to the beach, ample private parking, and diverse mix of tenant spaces makes it quite attractive. The historical connection to Major League Baseball player Harry Hooper who, is a well-known figure in town adds an extra layer of charm and intrigue.

With the possibility of converting the top floor back into residential space, there's flexibility for different types of buyers, whether they're interested in continuing with commercial tenants or exploring the option of vacation rentals. The ocean, beach, and village views from the top floor only enhance its appeal.

Overall, extremely unique and valuable property that offers both a solid investment opportunity and a chance to be a part of Capitola's vibrant community.



Newer:

- Flooring
- Refinished the facade
- Exterior electrical and lighting package
- Paint
- Awnings
- Landscaping



>> Property Highlights

200
MONTEREY AVENUE

CAPITOLA, CA



Prime retail building opportunity in a bustling coastal town



Located in a high-traffic area



Excellent visibility and accessibility for businesses looking to capitalize on the vibrant local and tourist market.



Ample square footage



Flexible interior layouts



Modern amenities, making it suitable for a variety of retail ventures



Proximity to the beach, local shops, and dining establishments

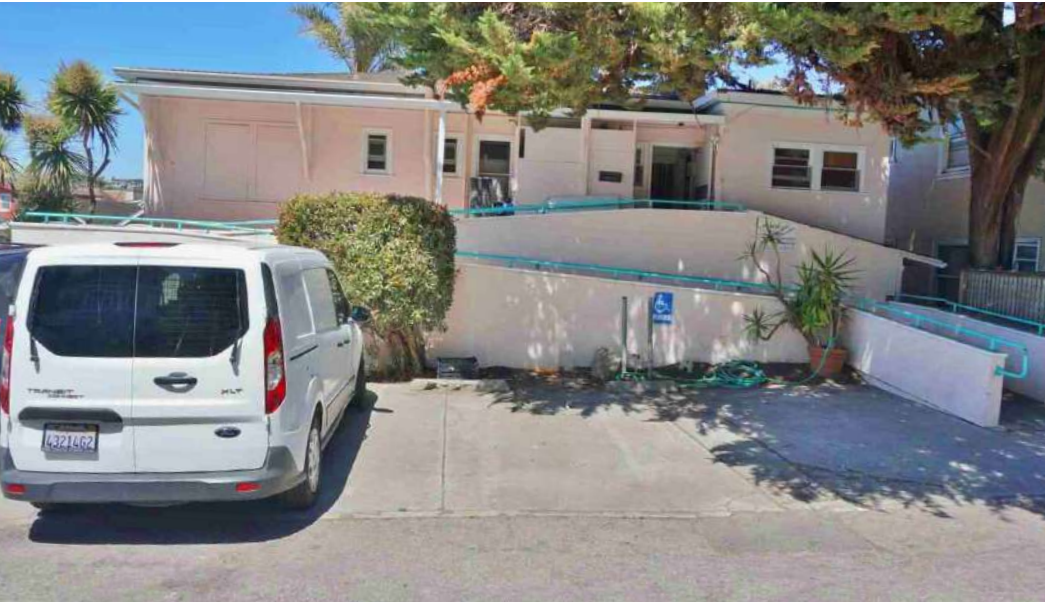


Perfectly positioned to attract both residents and visitors



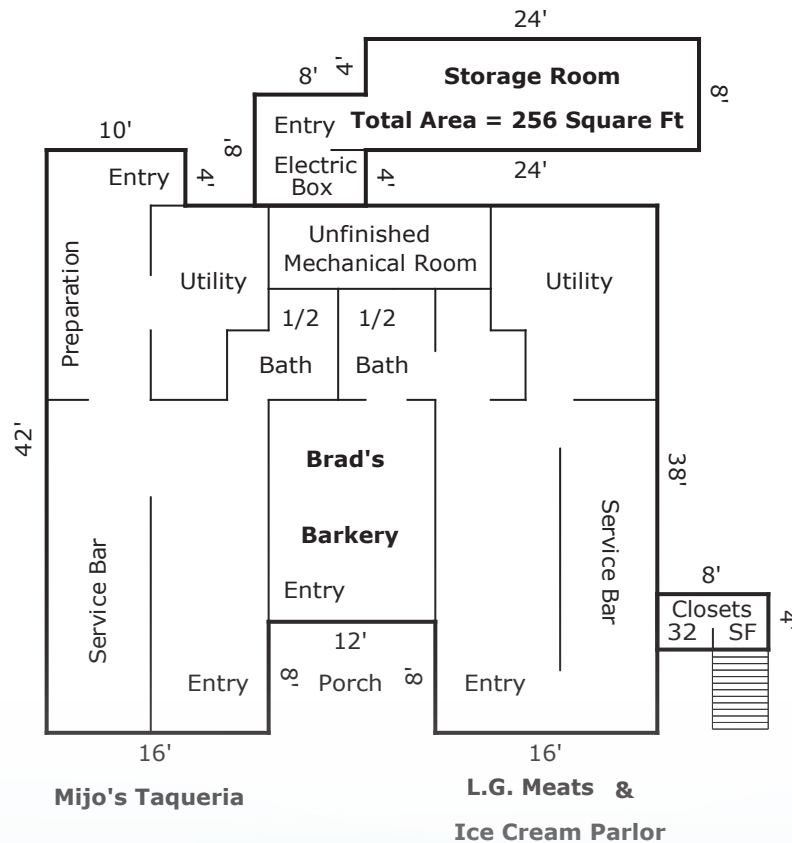
Significant potential for growth and success in a thriving community



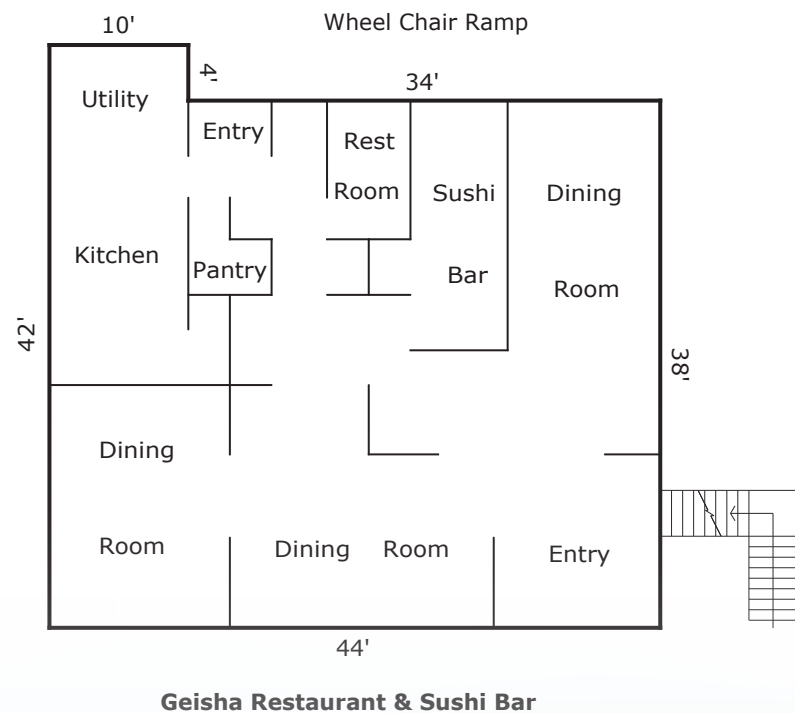


First Floor Gross Building Area = 1,616 Square feet

Total Gross Building Area does not include Storage Room and Closets



Second Floor Gross Building Area = 1,712 Square Feet





» Amenities Map





200 MONTEREY AVENUE

CAPITOLA, CA

The distributor of this communication is performing acts for which a real estate license is required. The information contained herein has been obtained from sources deemed reliable but has not been verified and no guarantee, warranty or representation, either express or implied, is made with respect to such information. Terms of sale or lease and availability are subject to change or withdrawal without notice. MP-1056 • 07/24

CAPITAL MARKETS
NEWMARK

GABE REGALADO
408.455.4913
gabe.regalado@nmrk.com
RE Lic. #02008286

PAUL ZECH
831.247.3007
paul.zech@cbtnorcal.com
RE Lic. #01965059