

2300

CHESTNUT AVE, SUITE 100 | GLENVIEW, IL

**BERKSHIRE
HATHAWAY**
HOMESERVICES

CHICAGO

COMMERCIAL DIVISION



IOANNIS RESS

773.818.5536

IRess@BHHSChicago.com



JOANN CASALI

847.308-1408

JCasali@BHHSChicago.com

**DISCOVER YOUR IDEAL FULLY
BUILT OUT MEDICAL SPACE!**

This premier medical facility offers 12 fully-equipped treatment rooms, each equipped with plumbing to cater to a variety of uses, with 2 rooms featuring showers. Additional amenities include a dedicated laundry room, two ADA-compliant bathrooms, a holding room, and both minor and full-sized procedure rooms, the latter boasting its own HVAC system and HEPA filters for optimal air quality/pressure.

Patients will appreciate the comfort of two recovery pods, while staff benefit from a well-designed nurses’ station, sterilization area, and a spacious break room complete with lockers. The reception area welcomes visitors with 2 spacious check-in counters and a comfortable waiting area.

Every treatment room is wired for surround sound, providing a soothing experience for patients. A separate battery backup storage unit is available for peace of mind, and three efficient HVAC units ensure consistent comfort throughout the building.

Don’t miss this opportunity to own a versatile and patient-friendly medical space that prioritizes safety, accessibility, and modern healthcare needs!

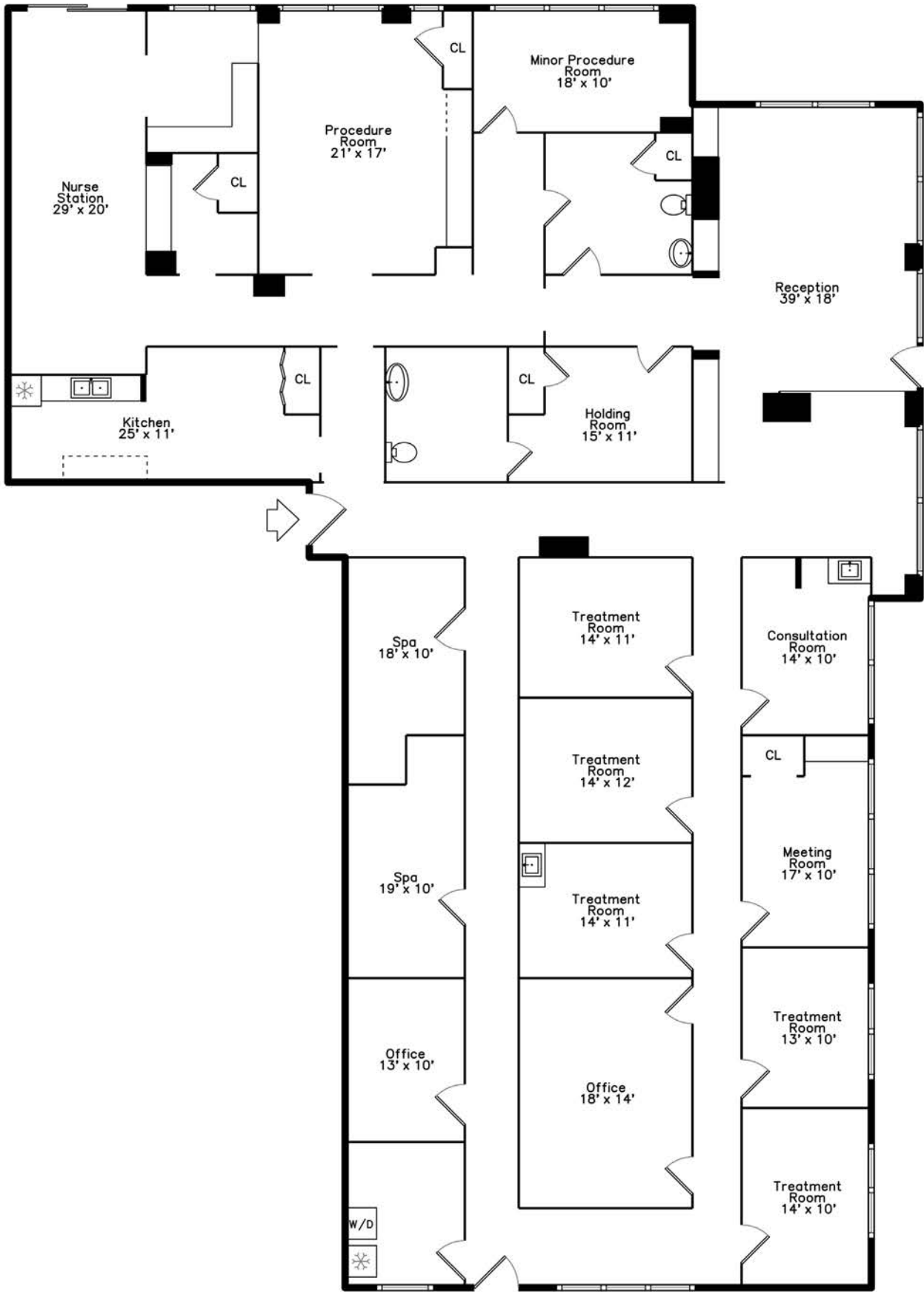
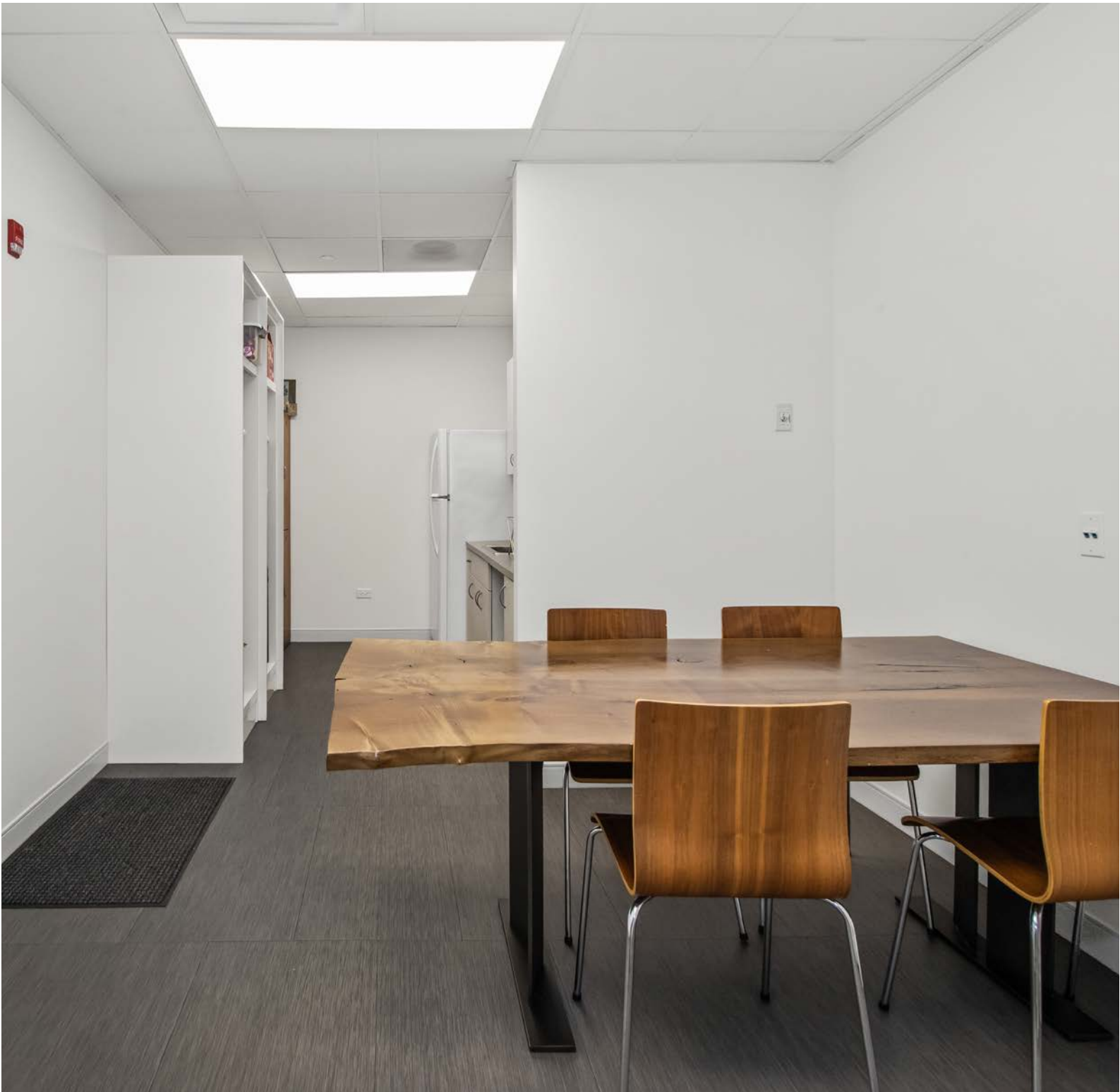
**BERKSHIRE
HATHAWAY**
HOMESERVICES
CHICAGO
COMMERCIAL DIVISION





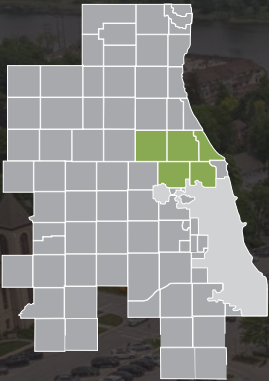








GLENVIEW, IL



DISTANCE TO DOWNTOWN

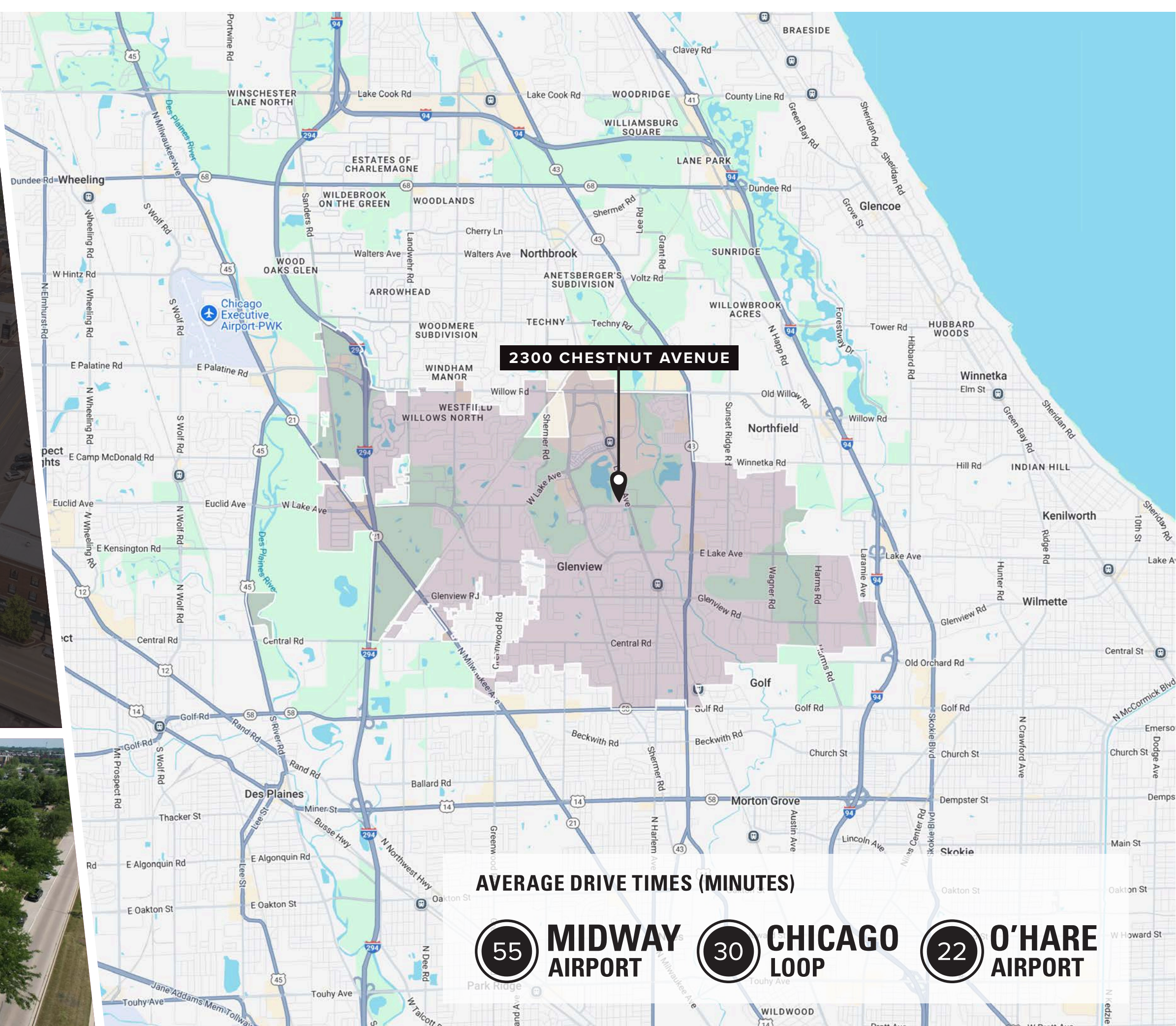


20 MILES



Metra trains offer service in Glenview via two station on the Milwaukee District North Line.

Incorporated as a village in 1899, Glenview was originally a small farming community. Today, Glenview is a spacious and quiet residential community with tree-lined streets and an award-winning school system. The village covers about 14 square miles and is home to approximately 45,000 residents. Glenview is home to a wide variety of shopping and dining attractions. Students can attend school in Glenview District 34 and the Glenbrook High Schools in District 225, which are amongst the highest rated in the Chicagoland area. Glenview's award-winning Park District includes 30 parks and playgrounds, skating rinks, 28 outdoor and eight indoor tennis courts, two swimming pools, and an 18-hole public golf course. Cook County Forest Preserve biking and horseback riding trails run through Glenview. The Glen Town Center, on the site of the U.S. Naval Air Station, is a shopping and dining destination.





SCAN QR CODE TO VIEW
PROPERTY VIDEO



IOANNIS RESS

773.818.5536

IRess@BHHSChicago.com



JOANN CASALI

847.308-1408

JCasali@BHHSChicago.com

**BERKSHIRE
HATHAWAY**
HOMESERVICES

CHICAGO

COMMERCIAL DIVISION

