



UNION PROMENADE

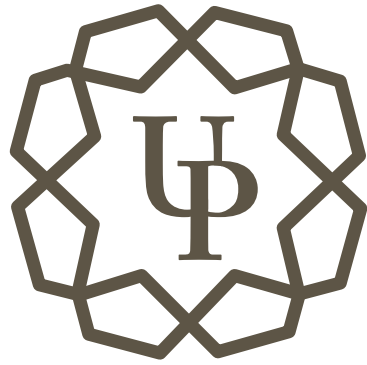
US 42, Union, KY 41091

Prime Retail Development - Up to 15,000 SF

For Lease, Ground Lease and/or BTS



**CUSHMAN &
WAKEFIELD**



*Union Promenade is Kentucky's
newest and most exciting
entertainment district.*

PROPERTY HIGHLIGHTS



New mixed-use development coming
in Q3 2023



Up to 133,000 SF of street-level retail/
restaurant space with patio dining



Surrounded by over 100,000 people in
a 5 mile radius with several new housing
developments planned



Development features 298 Apartment units
and 44 Patio Homes



Neighbors include: Kroger Marketplace,
Boom Town Biscuits, Panera Bread,
Chipotle, and Cincinnati Children's Hospital





StoryPoint Union
Senior Living
162 Units



30,000 VPD

42

42

The Villas of
Fowler's Creek
78 Units

Luxury Apartments
Coming Soon
298 Units

drees
HOMES
44 Patio Homes



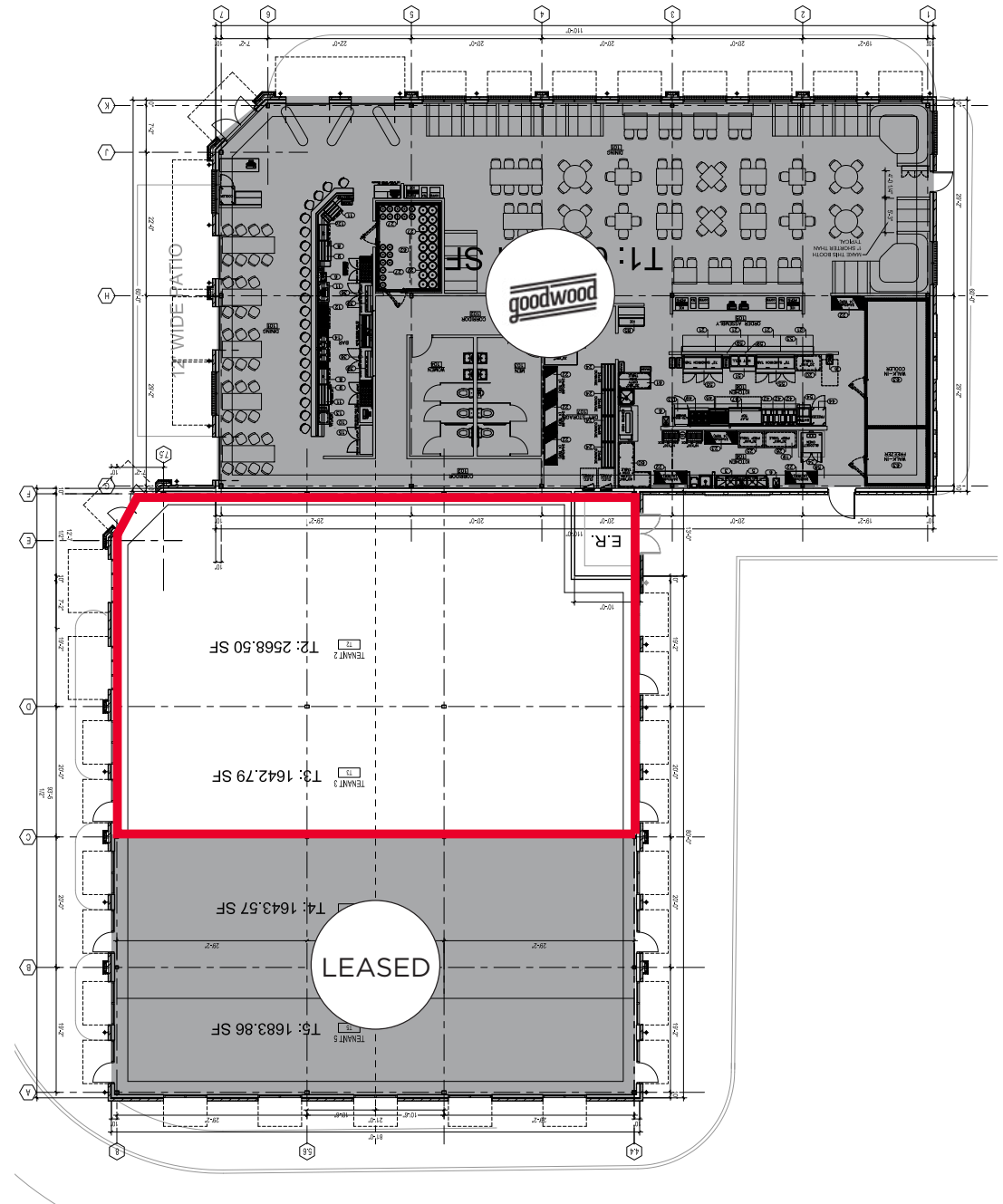
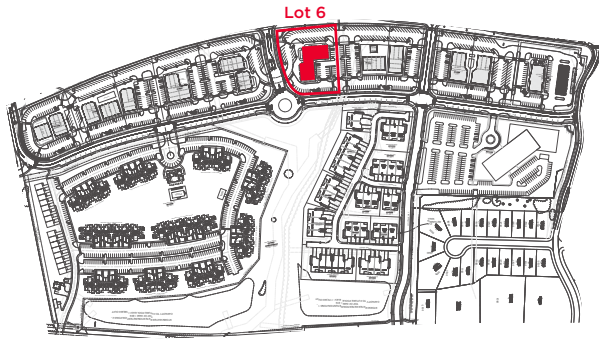
Master Plan



LOT 6

1,600 - 3,200 SF

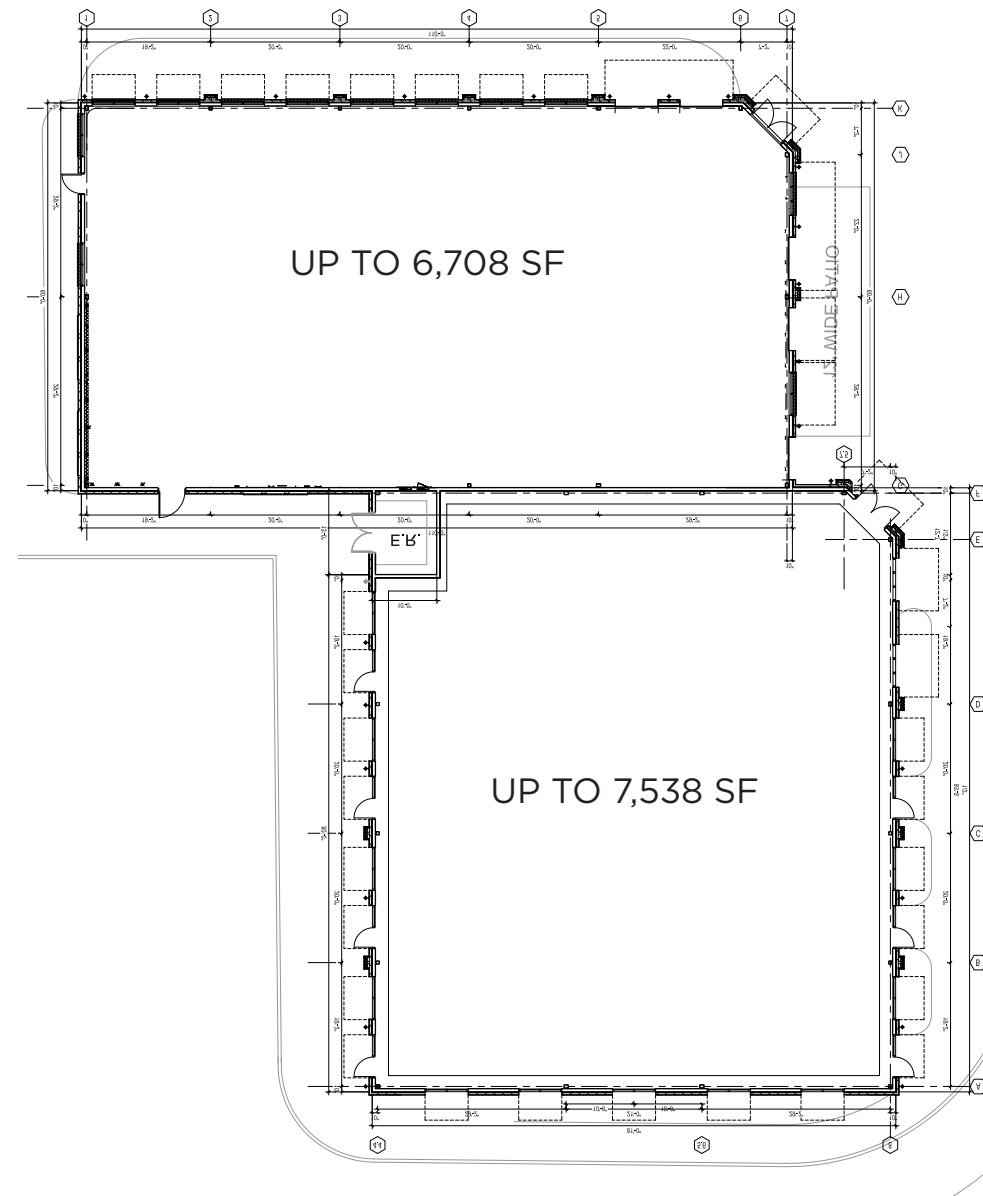
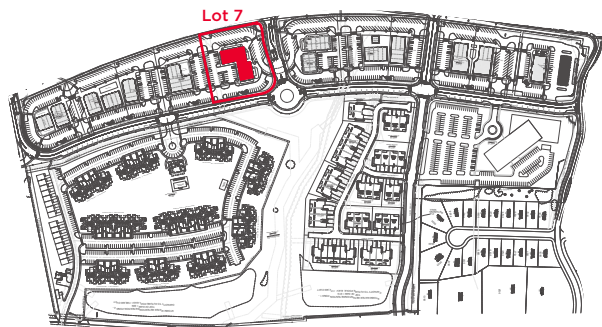
Available Q3 2023



LOT 7

1,600 - 14,000 SF

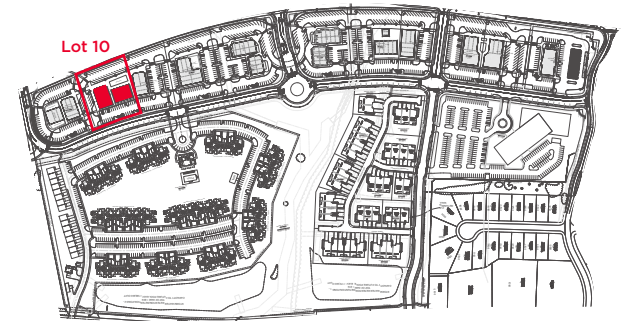
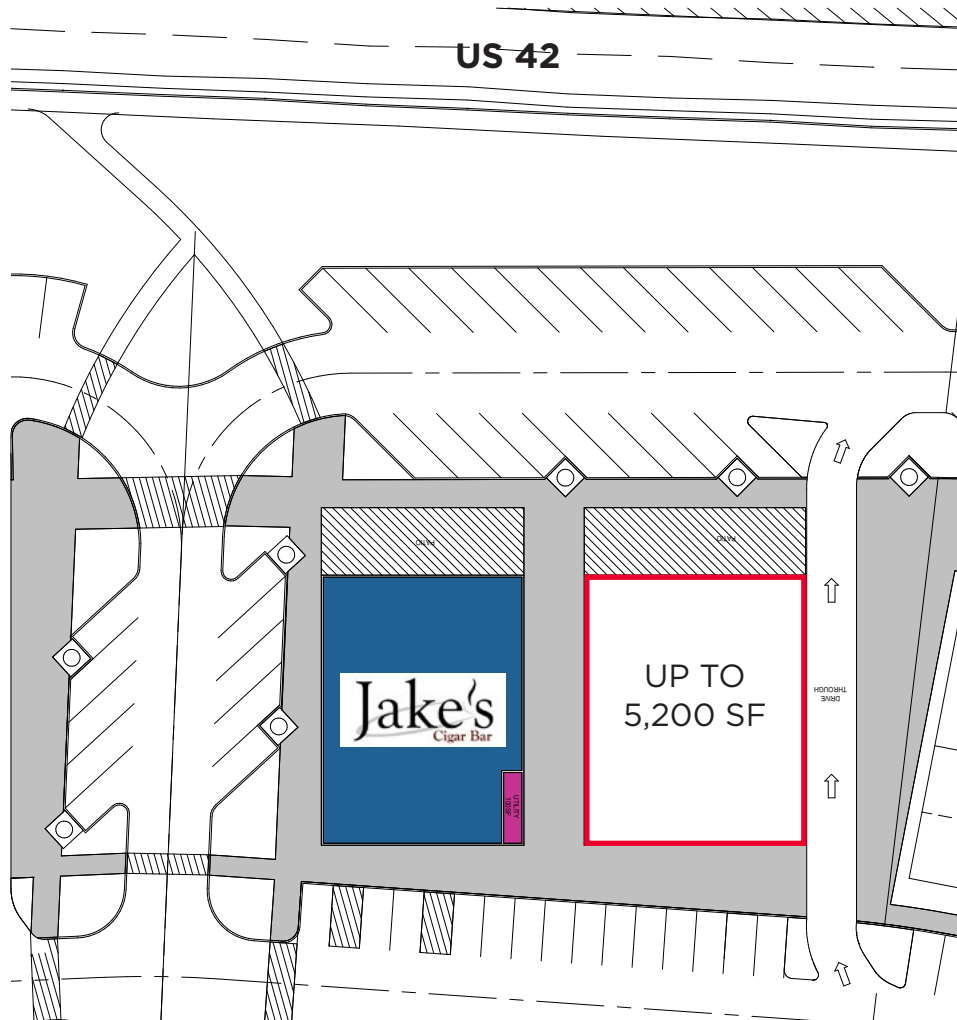
Available Q3 2023



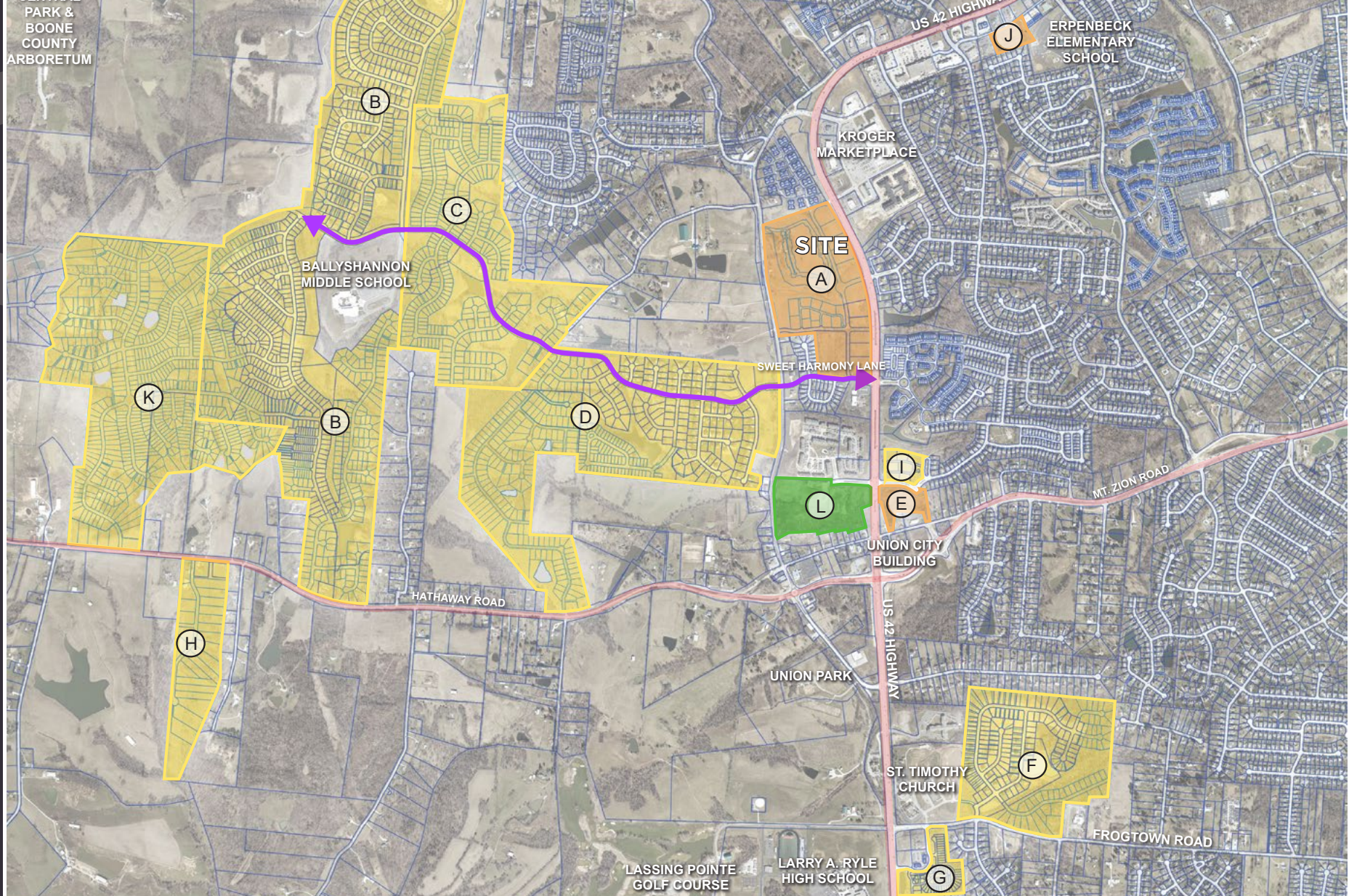
LOT 10

5,200 SF

Available Q3 2023







Union, KY (Boone County) New Housing Development

A. Union Promenade Development

- B. Ballyshannon (926 Units)
- C. Aberdeen Properties Residential Community (322 Units)
- D. Westbrook Estates (354 Units)

- E. Union Mixed Use Development (105 Units)

- F. Traemore (172 Units)
- G. Villas of Union Pointe (52 Units)
- H. Enclave (26 Units)

- I. Harmony Phase E (48 Units)
- J. Plantation Pointe (48 Units)
- K. Woodvale (530 Units)
- L. Future Union City Building & Park



Union Promenade is a 62-acre mixed use development located in Union, Kentucky located along State Highway US 42. The project incorporates multiple uses in a horizontal fashion - the uses coexist harmoniously next to each other.



POPULATION



AVERAGE
HOUSEHOLD INCOME



DAYTIME
POPULATION

MILE	1	9,440	\$102,472	3,813
	3	56,841	\$104,560	25,330
	5	107,885	\$93,884	78,249





TERRY OHNMEIS

Director
+1 513 763 3059
terry.ohnmeis@cushwake.com

ANDREW SELLET

Managing Director
+1 513 763 3053
andrew.sellet@cushwake.com

Cushman & Wakefield Copyright 2023. No warranty or representation, express or implied, is made to the accuracy or completeness of the information contained herein, and same is submitted subject to errors, omissions, change of price, rental or other conditions, withdrawal without notice, and to any special listing conditions imposed by the property owner(s). As applicable, we make no representation as to the condition of the property (or properties) in question.

