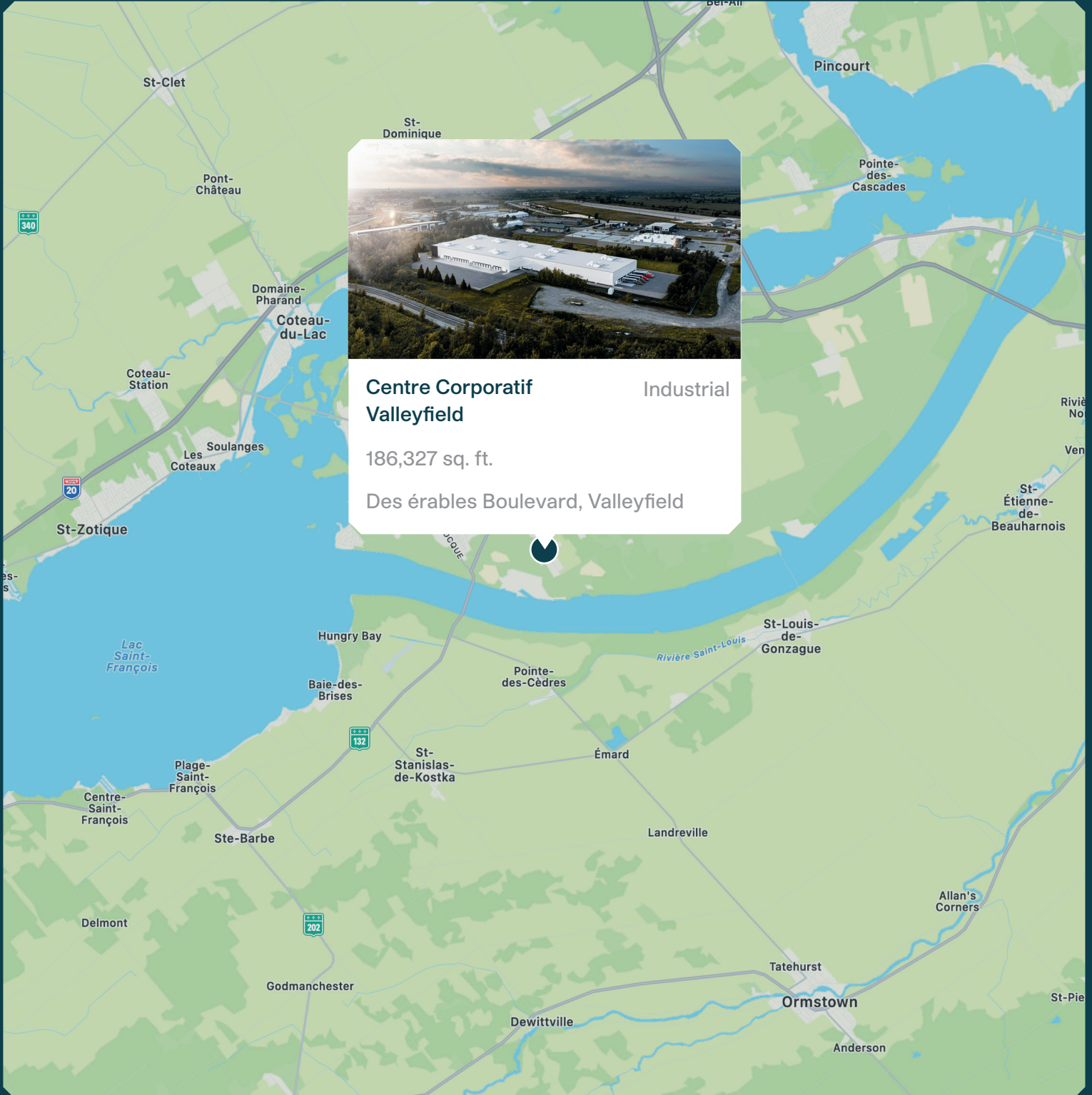


# Centre Corporatif Valleyfield



**MONTONI**

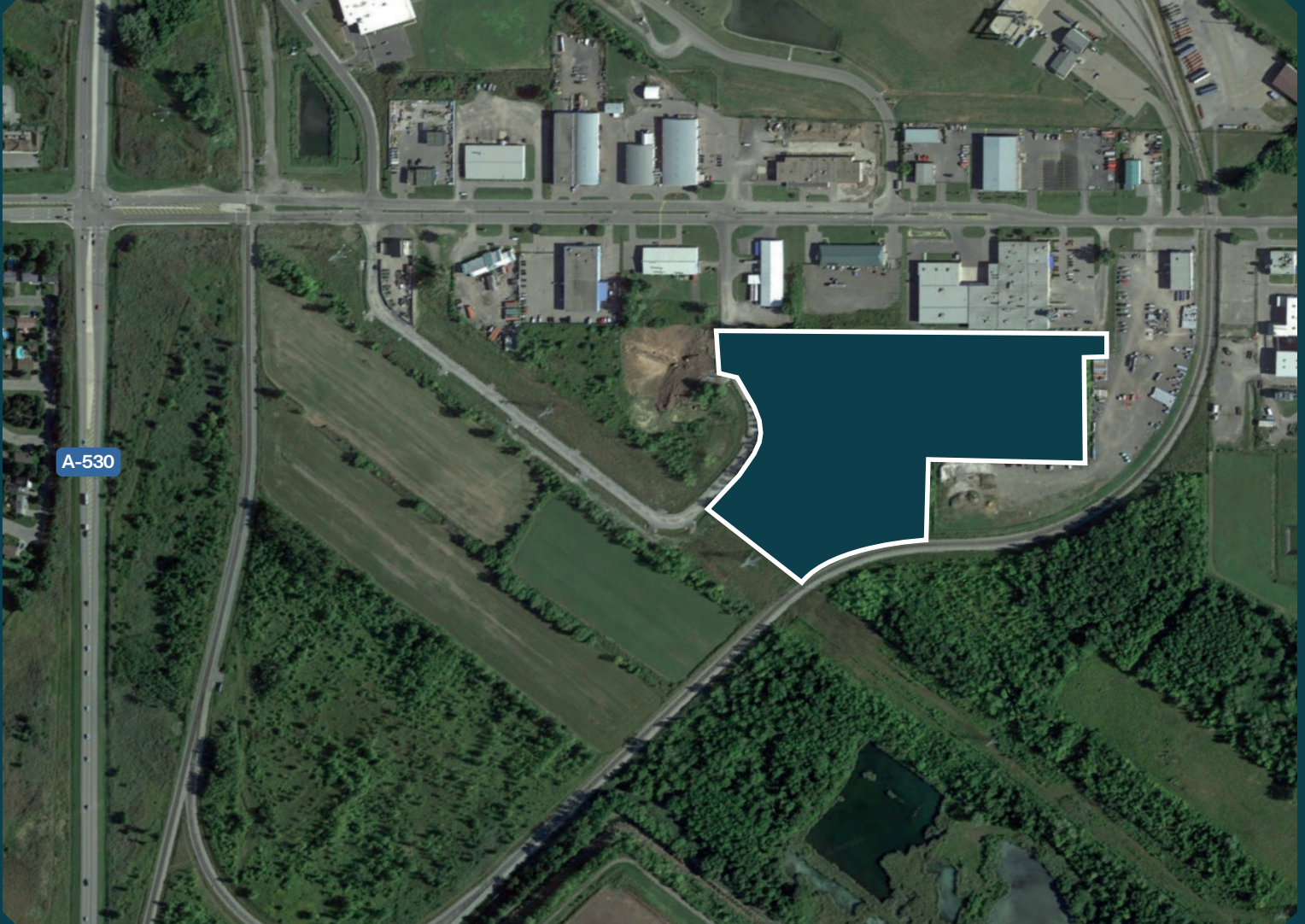
Building on our word  
for tomorrow



**Centre Corporatif Valleyfield** Industrial  
186,327 sq. ft.  
Des érables Boulevard, Valleyfield



# Neighborhood Map



## LAND

---

Total area - 499,074 sq. ft.

## BUILDING

---

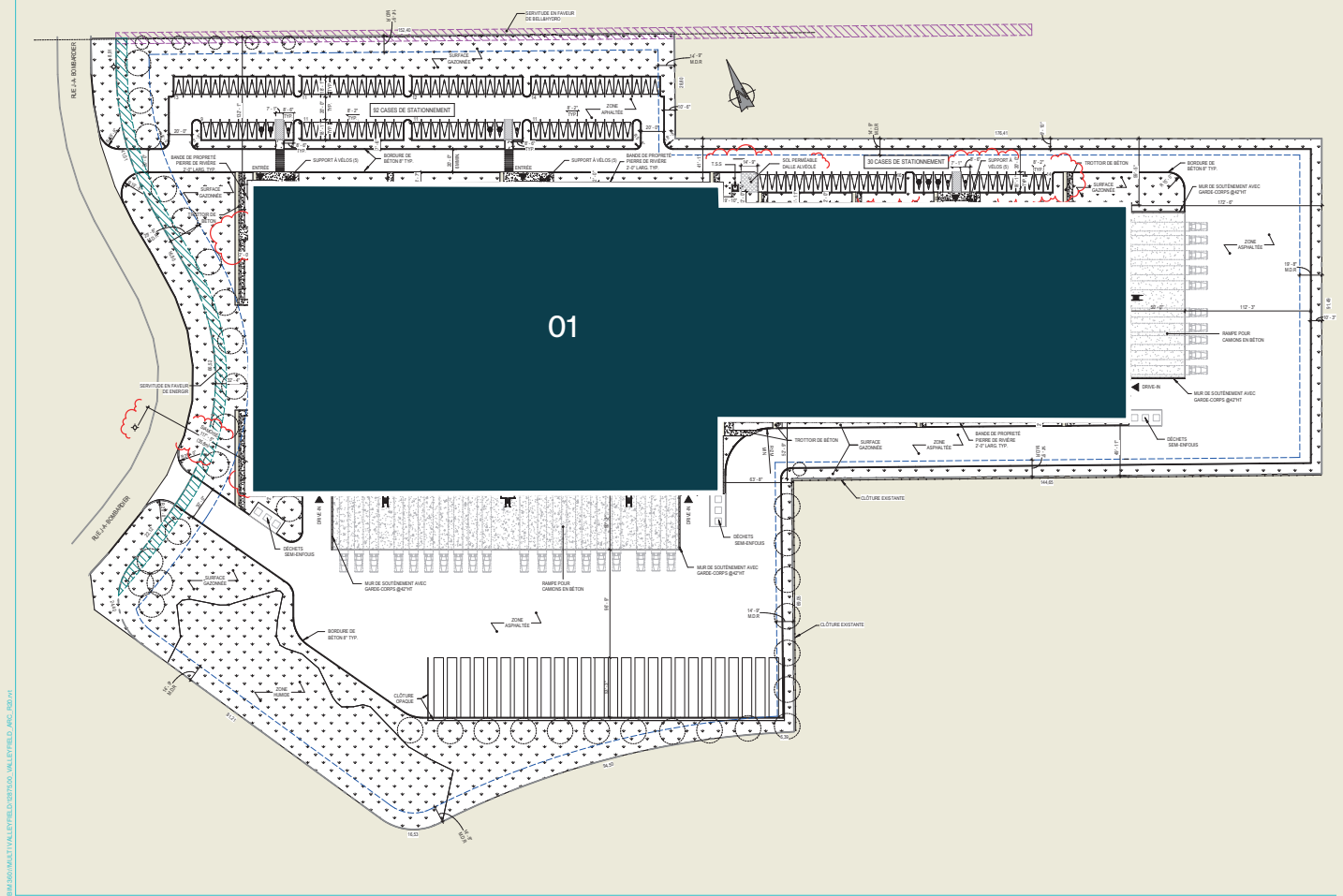
Available area - 186,327 sq. ft.

## ACCESS

---

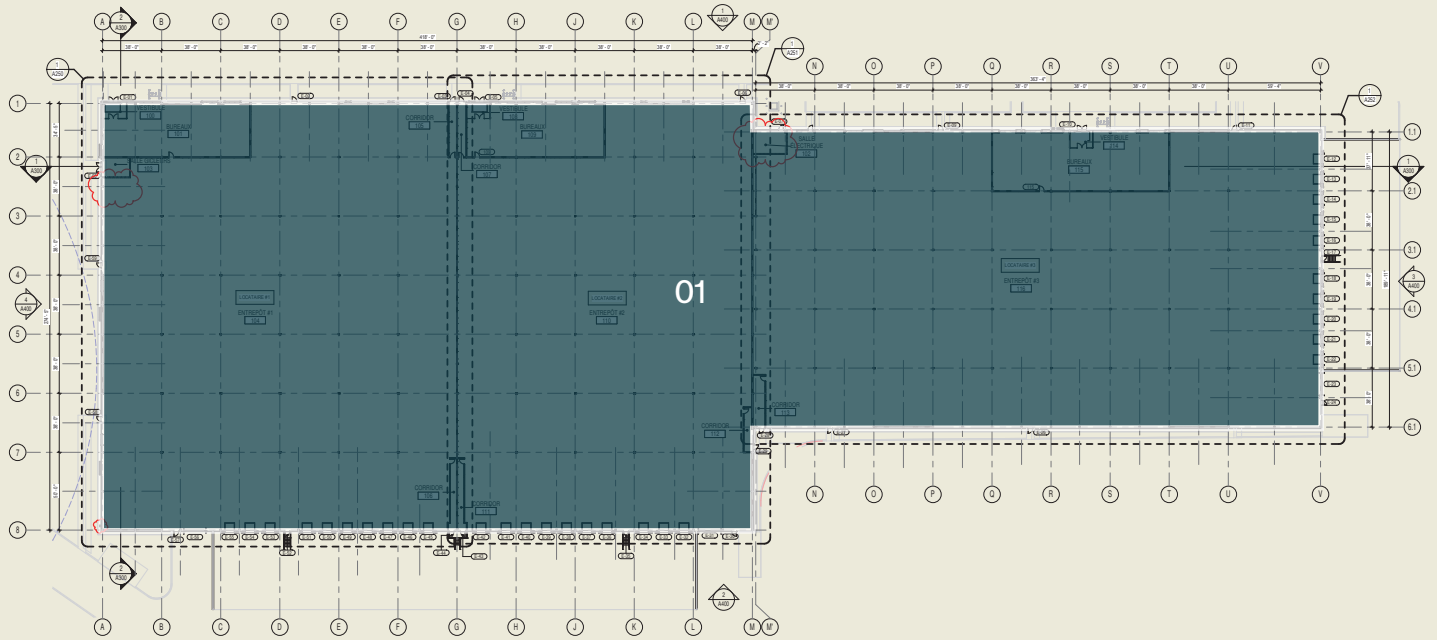
Des érables Boulevard, Valleyfield,  
Parking spaces available  
Easy access to highways 530, 132

# Site plan



01 - 186,327 sq. ft.

# Ground floor plan



01 - 186,327 sq. ft.



# Summary



## Certifications aimed

## Relevant Information



### LEED Gold

(Leadership in Energy and Environmental Design) is a rating system recognized in 150 countries and is designed to leave a legacy of high-quality, environmentally friendly buildings with a reduced impact on the environment.

- Number of potential units: Three (3)
- Total land area: 499,074 sq. ft.
- Total building area: 186,327 sq. ft.
- Available space: 186,327 sq. ft.
- Drive-in garage doors:  
Total of three (3) doors - Dim : 14'-0" x14'-0"
- Loading dock doors :  
Total de thirty one (31) doors -  
Dim : 9'-0" x 10'-0"
- Electrical entry to building : 1 200 A
- Bay sizes : 38' x 38'

# MONTONI

For any questions related to this  
presentation, please contact:  
[abouchard@groupemontoni.com](mailto:abouchard@groupemontoni.com)