



ESSEX
PROPERTY TRUST, INC

GALLOWAY

OWENS DRIVE & WILLOW ROAD
PLEASANTON, CA



A mixed use development featuring prime retail spaces directly across from Pleasanton BART

Contact Info:

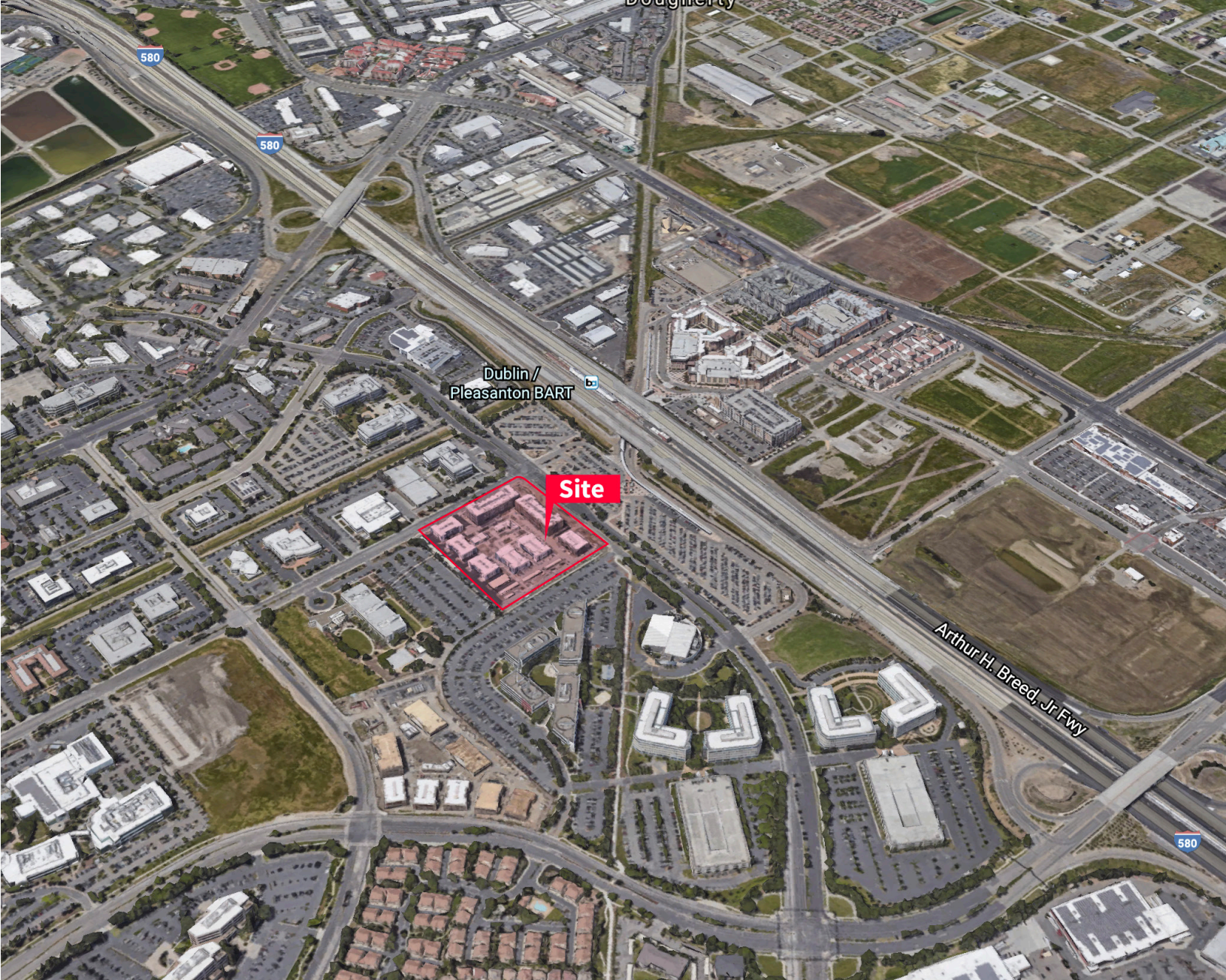
Jeff Badstubner
Managing Director
+ 415-395-4900
jeff.badstubner@jll.com
RE License # 01155279

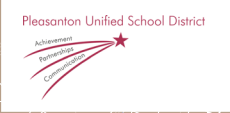
Justin Choi
Vice President
+ 415-395-7262
justin.choi@jll.com
RE License # 02107928



Property Description

- Located in the heart of Pleasanton are The Galloway at Owens and The Galloway at Hacienda – two brand new luxury apartment communities featuring 510 apartment units
- Two (2) 3,071 SF retail spaces (potentially divisible to 1,200 SF) with excellent line of sight from Owens Drive
- Hard corner identity with dedicated street parking stalls
- Adjacent to Dublin/Pleasanton BART, John Muir Urgent Care, Kaiser Permanente, 24 Hour Fitness, Starbucks Drive-Thru, Oracle and more!
- East Dublin BART ridership: 8,023 weekday exits, business station between Downtown Oakland and East Bay communities





Neighborhood Demographics

	1 mile	3 mile	5 mile
Total Population	11,412	117,405	190,575

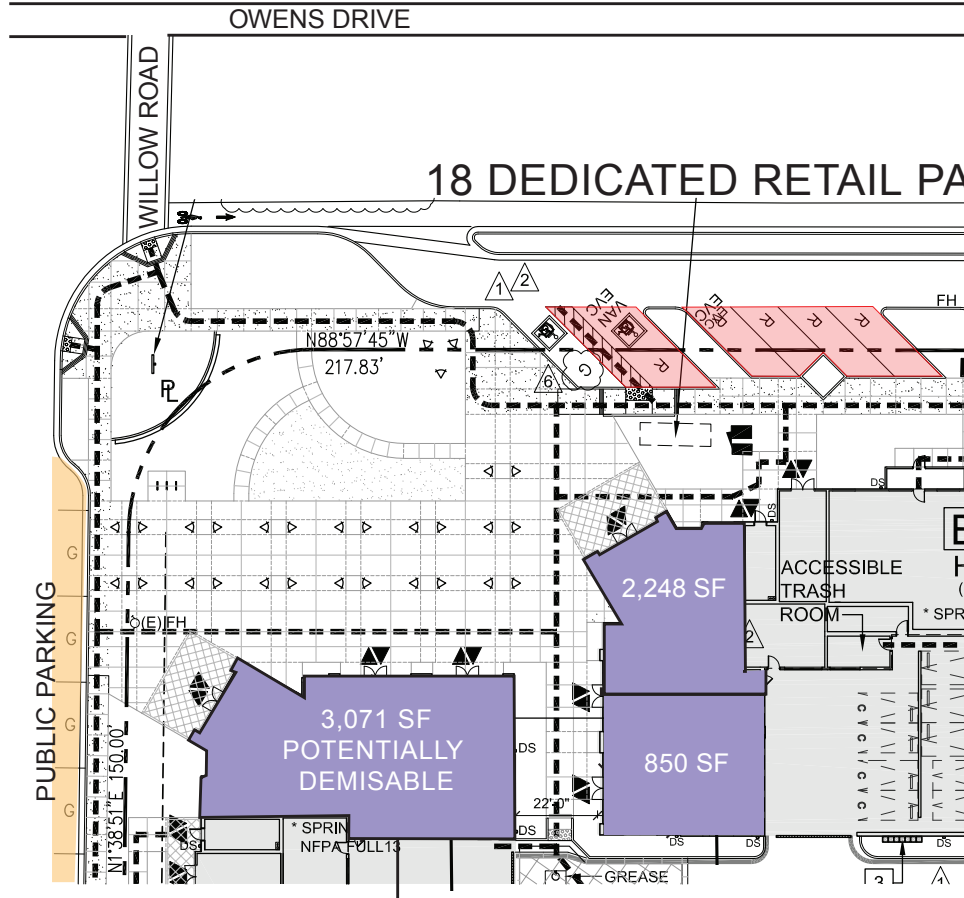
	1 mile	3 mile	5 mile
Median Household Income	\$157,141	\$157,232	\$162,952

	1 mile	3 mile	5 mile
Total Employees	5,865	54,169	87,725

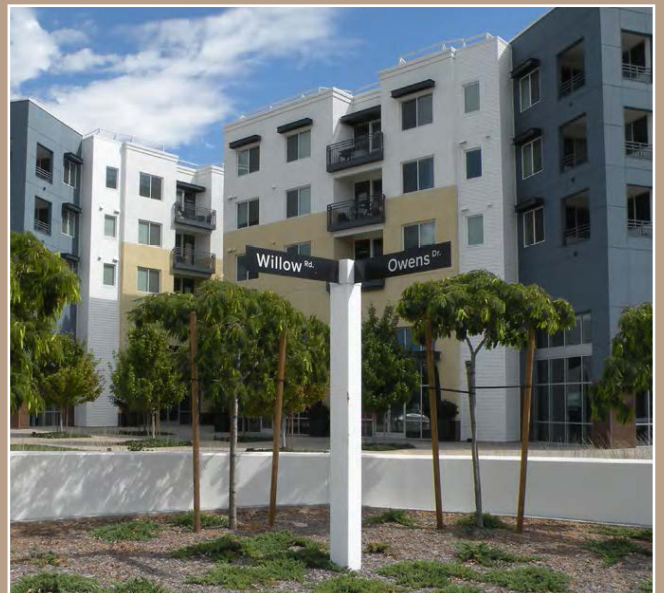
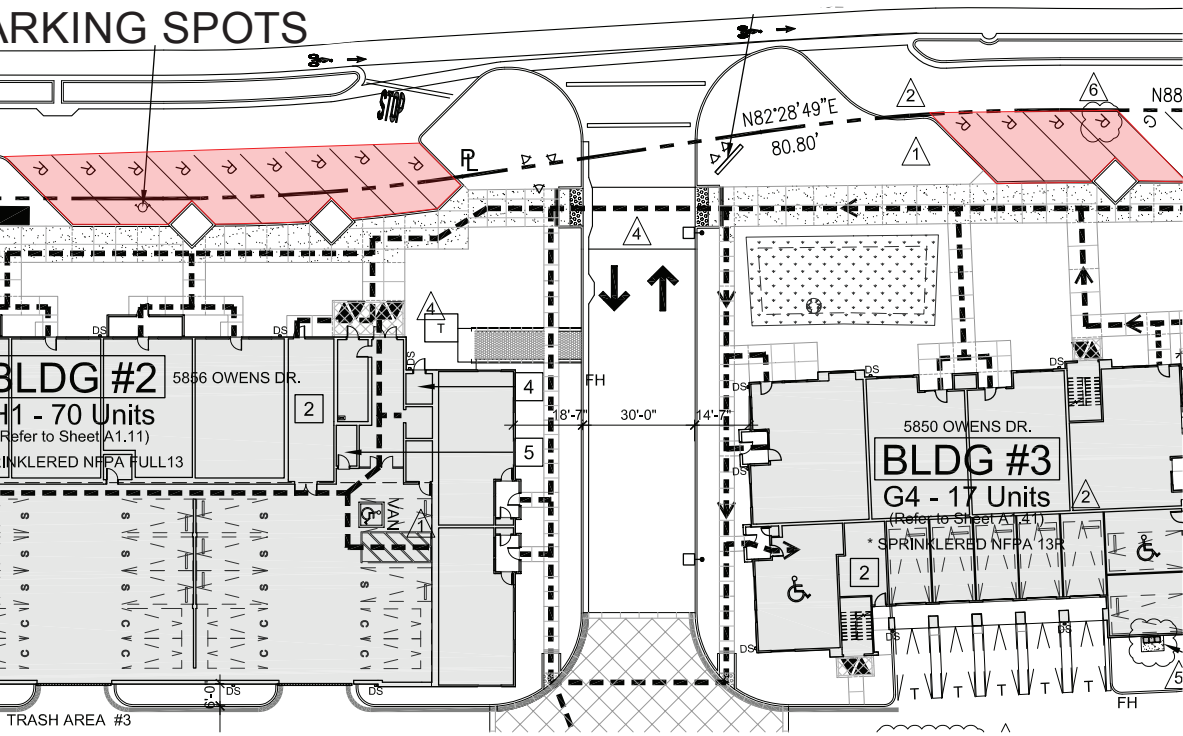


■ BART Station

Floor Plan



PARKING SPOTS





For more information or inspection,
please contact Exclusive Agents:

Jeff Badstubner

Managing Director
+ 415-395-4900
jeff.badstubner@jll.com
RE License # 01155279

Justin Choi

Vice President
+ 415-395-7262
justin.choi@jll.com
RE License # 02107928

ESSEX
PROPERTY TRUST, INC