



THE
RANTSGROUP
COMMERCIAL REAL ESTATE

FOR LEASE

CLASS A WATERFRONT OFFICE BUILDING (TOP FLOOR)



724 COLUMBIA STREET NW, OLYMPIA, WA | MARKET PLACE OFFICE BUILDING

Premier waterfront office building next to Anthony's Homeport, the Olympia Farmer's Market, and the Port of Olympia. Ample parking with open, visitor, and additional free Market District parking on the capitol campus' free Dash transit line. Utilities and janitorial are included in the base rent. A large shared conference room on the 2nd floor is available by appointment. Professional on-site building management.

LISTING INFORMATION

- ▶ 4th-floor space with views of the water, mountain, and capital.
- ▶ Space can be split in a variety of ways.
- ▶ The current split is Suite 410: 1,714 RSF and Suite 420: 3,300 RSF.
- ▶ Many private offices, kitchenettes, balconies, and meeting rooms.

1,714 - 5,014 SF

\$28.50/SF
MODIFIED GROSS

CBA# 38360990



This information, while obtained from sources we deem reliable, is not guaranteed. It is provided without any representation, warranty or guarantee, expressed or implied as to its accuracy. Prospective buyer or tenant should conduct an independent investigation and verification of all matters deemed to be material, including, but not limited to, statements of income and expenses. Consult your attorney, accountant, or other professional advisor.



Carolyn Graden, CCIM
MANAGING BROKER
(360) 763-4994
carolyn@rantsgroup.com

360-943-8060
RANTSGROUP.com

724 COLUMBIA STREET NW, OLYMPIA, WA | MARKET PLACE OFFICE BUILDING

FOURTH FLOOR



THIS FLOORPLAN IS NOT TO SCALE



CONTACT

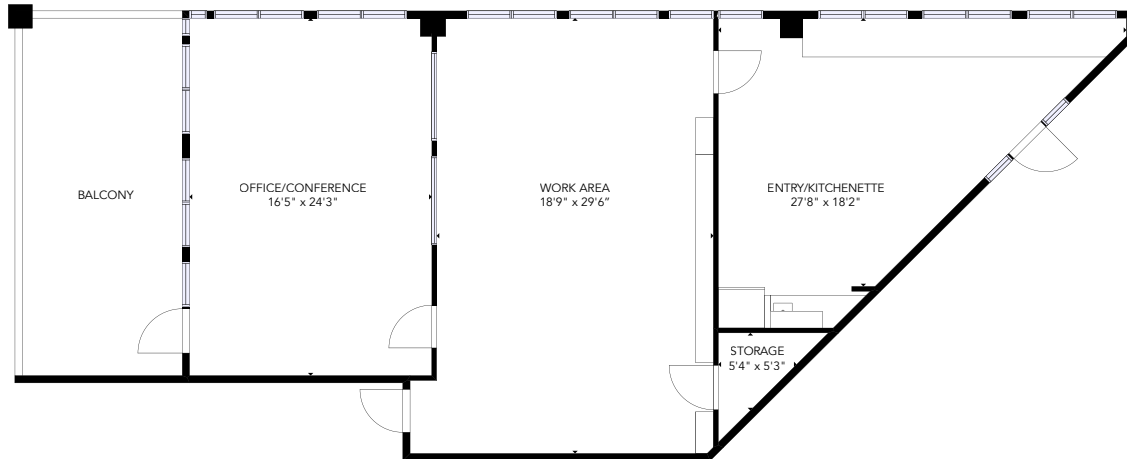
Carolyn Graden, CCIM
MANAGING BROKER
(360) 763-4994
carolyn@rantsgroup.com

This information, while obtained from sources we deem reliable, is not guaranteed. It is provided without any representation, warranty or guarantee, expressed or implied as to its accuracy. Prospective buyer or tenant should conduct an independent investigation and verification of all matters deemed to be material, including, but not limited to, statements of income and expenses. Consult your attorney, accountant, or other professional advisor.

360-943-8060 | RANTSGROUP.com

724 COLUMBIA STREET NW, OLYMPIA, WA | MARKET PLACE OFFICE BUILDING

SUITE 410: 1,714 SF | \$28.50/SF, MODIFIED GROSS



THIS FLOORPLAN IS NOT TO SCALE
SIZES AND DIMENSIONS ARE APPROXIMATE, ACTUAL MAY VARY.



OPEN WORK AREA



SECONDARY WORK AREA



BALCONY



KITCHENETTE



WORK AREA NEAR ENTRY



ENTRY/KITCHENETTE

CONTACT

Carolyn Graden, CCIM
MANAGING BROKER
(360) 763-4994
carolyn@rantsgroup.com



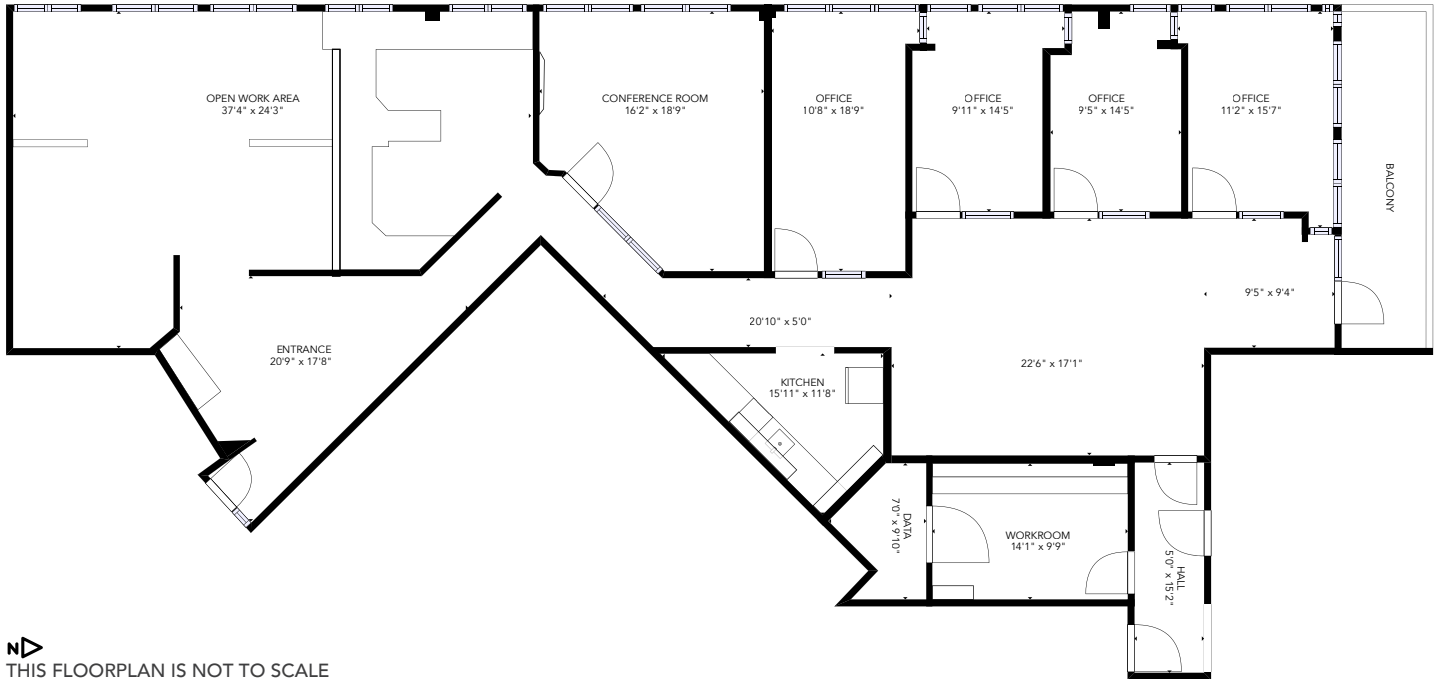
rantsgroup.com/MarketPlace410

This information, while obtained from sources we deem reliable, is not guaranteed. It is provided without any representation, warranty or guarantee, expressed or implied as to its accuracy. Prospective buyer or tenant should conduct an independent investigation and verification of all matters deemed to be material, including, but not limited to, statements of income and expenses. Consult your attorney, accountant, or other professional advisor.

360-943-8060 | RANTSGROUP.com

724 COLUMBIA STREET NW, OLYMPIA, WA | MARKET PLACE OFFICE BUILDING

SUITE 420: 3,330 SF | \$28.50 / SF, MODIFIED GROSS



THIS FLOORPLAN IS NOT TO SCALE
SIZES AND DIMENSIONS ARE APPROXIMATE, ACTUAL MAY VARY.



OPEN WORK AREA



CONFERENCE ROOM



BALCONY



ENTRY



KITCHEN



WORK AREA & OFFICES

CONTACT

Carolyn Graden, CCIM
MANAGING BROKER
(360) 763-4994
carolyn@rantsgroup.com



rantsgroup/MarketPlace420

This information, while obtained from sources we deem reliable, is not guaranteed. It is provided without any representation, warranty or guarantee, expressed or implied as to its accuracy. Prospective buyer or tenant should conduct an independent investigation and verification of all matters deemed to be material, including, but not limited to, statements of income and expenses. Consult your attorney, accountant, or other professional advisor.

360-943-8060 | RANTSGROUP.com