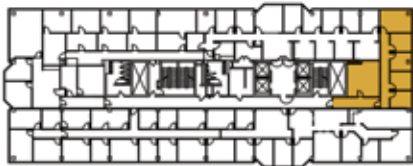




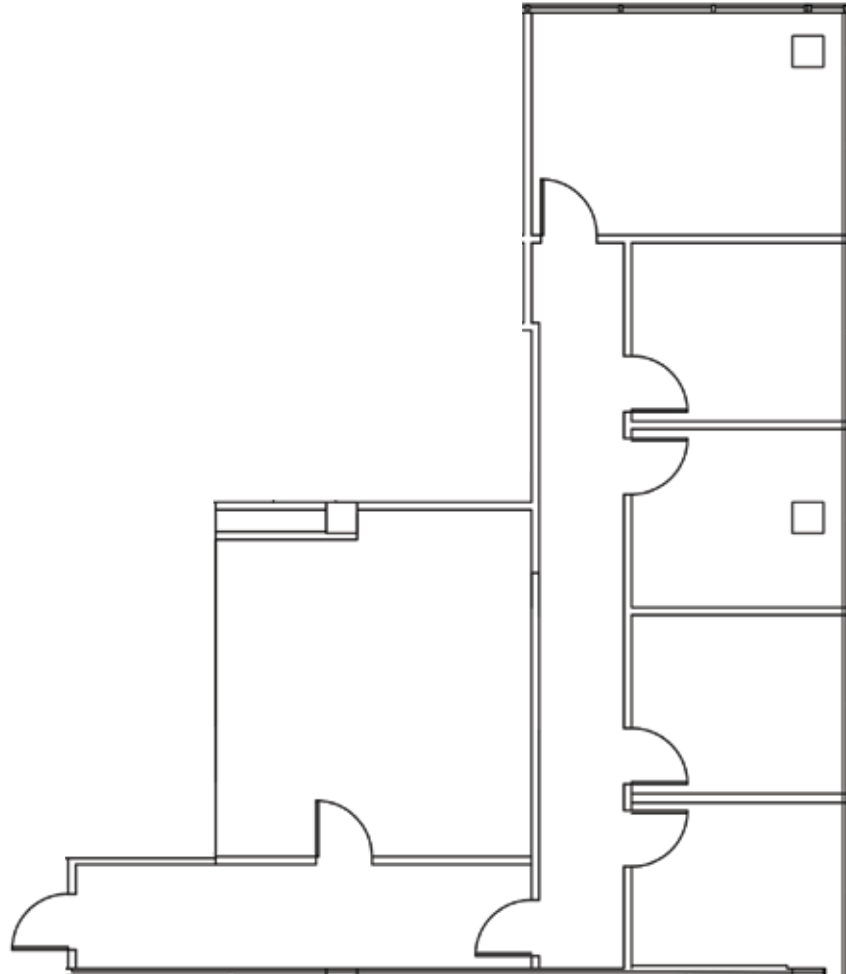
**301
NORTH
ELM**

**Suite 205
1,544 RSF**



Site Key *Note: Drawing not to scale*

Primary Entrance



Richard Mossman
Richard.Mossman@cbre.com | +1 336 499 9956

Christy Crouch Smith
Christy.Smith@cbre.com | +1 336 544 2726

CBRE | CentrePort III | 101 Centreport Drive, Suite 160, Greensboro, NC 27409

© 2024 CBRE, Inc. The information contained in this document has been obtained from sources believed reliable. While CBRE, Inc. does not doubt its accuracy, CBRE, Inc. has not verified it and makes no guarantee, warranty or representation about it. It is your responsibility to independently confirm its accuracy and completeness. Any projections, opinions, assumptions or estimates used are for example only and do not represent the current or future performance of the property. The value of this transaction to you depends on tax and other factors which should be evaluated by your tax, financial and legal advisors. You and your advisors should conduct a careful, independent investigation of the property to determine to your satisfaction the suitability of the property for your needs. Photos herein are the property of their respective owners and use of these images without the express written consent of the owner is prohibited.






301
NORTH
ELM

Suite 238
1,208 RSF



Site Key *Note: Drawing not to scale*

 **Primary Entrance**



Richard Mossman
Richard.Mossman@cbre.com | +1 336 499 9956

Christy Crouch Smith
Christy.Smith@cbre.com | +1 336 544 2726



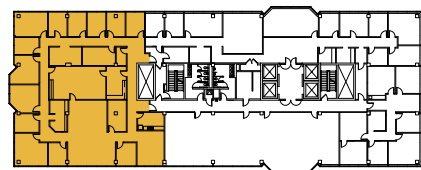
CBRE | CentrePort III | 101 Centreport Drive, Suite 160, Greensboro, NC 27409

© 2024 CBRE, Inc. The information contained in this document has been obtained from sources believed reliable. While CBRE, Inc. does not doubt its accuracy, CBRE, Inc. has not verified it and makes no guarantee, warranty or representation about it. It is your responsibility to independently confirm its accuracy and completeness. Any projections, opinions, assumptions or estimates used are for example only and do not represent the current or future performance of the property. The value of this transaction to you depends on tax and other factors which should be evaluated by your tax, financial and legal advisors. You and your advisors should conduct a careful, independent investigation of the property to determine to your satisfaction the suitability of the property for your needs. Photos herein are the property of their respective owners and use of these images without the express written consent of the owner is prohibited.



**301
NORTH
ELM**

**Suite 300
6,442 RSF**



Site Key *Note: Drawing not to scale*

Richard Mossman
Richard.Mossman@cbre.com | +1 336 499 9956

Christy Crouch Smith
Christy.Smith@cbre.com | +1 336 544 2726

CBRE | CentrePort III | 101 Centreport Drive, Suite 160, Greensboro, NC 27409

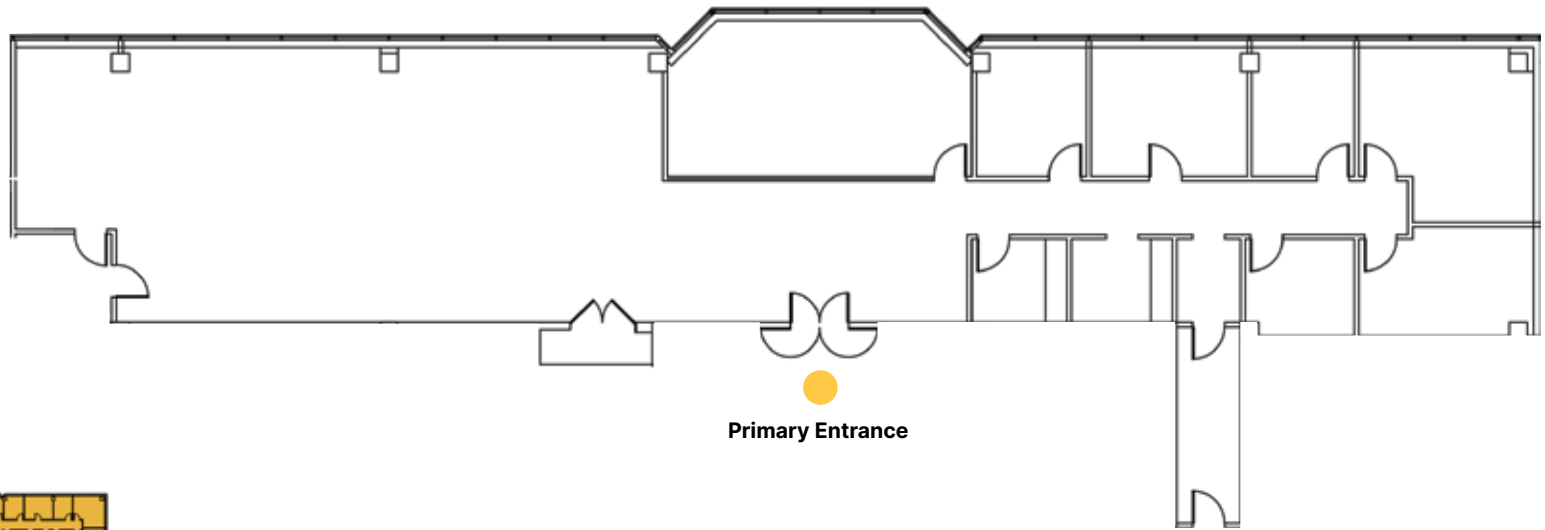
© 2024 CBRE, Inc. The information contained in this document has been obtained from sources believed reliable. While CBRE, Inc. does not doubt its accuracy, CBRE, Inc. has not verified it and makes no guarantee, warranty or representation about it. It is your responsibility to independently confirm its accuracy and completeness. Any projections, opinions, assumptions or estimates used are for example only and do not represent the current or future performance of the property. The value of this transaction to you depends on tax and other factors which should be evaluated by your tax, financial and legal advisors. You and your advisors should conduct a careful, independent investigation of the property to determine to your satisfaction the suitability of the property for your needs. Photos herein are the property of their respective owners and use of these images without the express written consent of the owner is prohibited.





**301
NORTH
ELM**

**Suite 303
4,531 RSF**



Primary Entrance



Site Key *Note: Drawing not to scale*

Richard Mossman
Richard.Mossman@cbre.com | +1 336 499 9956

Christy Crouch Smith
Christy.Smith@cbre.com | +1 336 544 2726

CBRE | CentrePort III | 101 Centreport Drive, Suite 160, Greensboro, NC 27409

© 2024 CBRE, Inc. The information contained in this document has been obtained from sources believed reliable. While CBRE, Inc. does not doubt its accuracy, CBRE, Inc. has not verified it and makes no guarantee, warranty or representation about it. It is your responsibility to independently confirm its accuracy and completeness. Any projections, opinions, assumptions or estimates used are for example only and do not represent the current or future performance of the property. The value of this transaction to you depends on tax and other factors which should be evaluated by your tax, financial and legal advisors. You and your advisors should conduct a careful, independent investigation of the property to determine to your satisfaction the suitability of the property for your needs. Photos herein are the property of their respective owners and use of these images without the express written consent of the owner is prohibited.

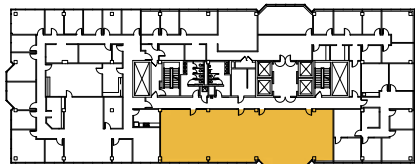
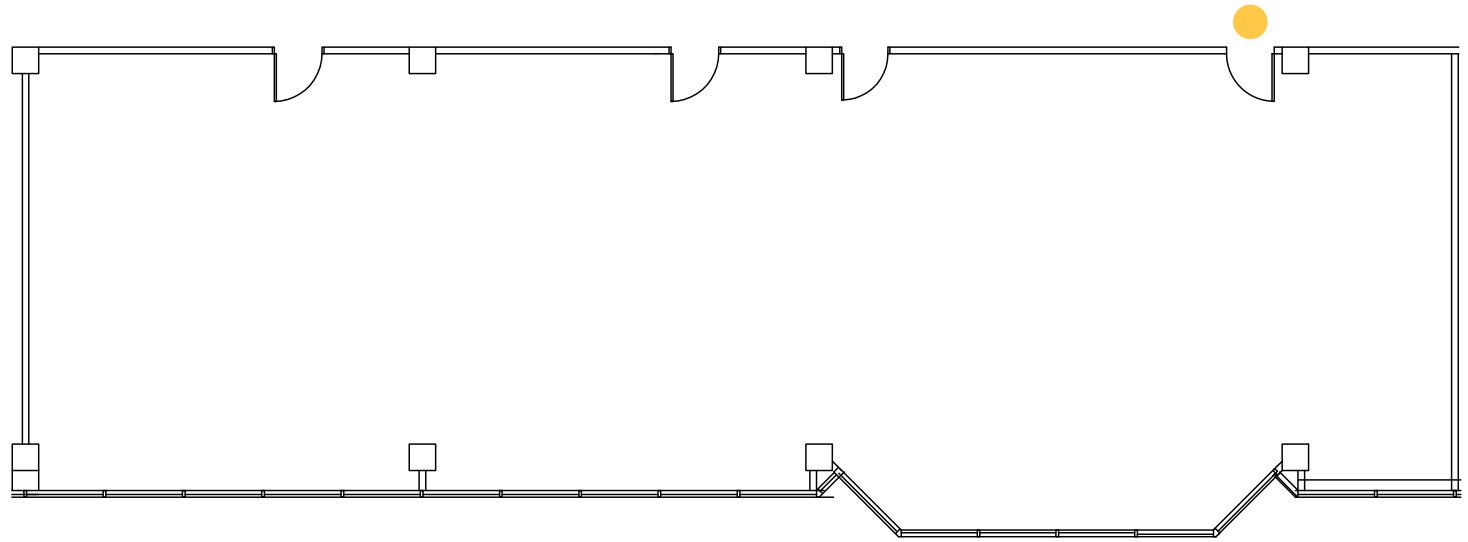




**301
NORTH
ELM**

**Suite 308
2,950 RSF**

Primary Entrance



Site Key *Note: Drawing not to scale*

Richard Mossman
Richard.Mossman@cbre.com | +1 336 499 9956

Christy Crouch Smith
Christy.Smith@cbre.com | +1 336 544 2726

CBRE | CentrePort III | 101 Centreport Drive, Suite 160, Greensboro, NC 27409

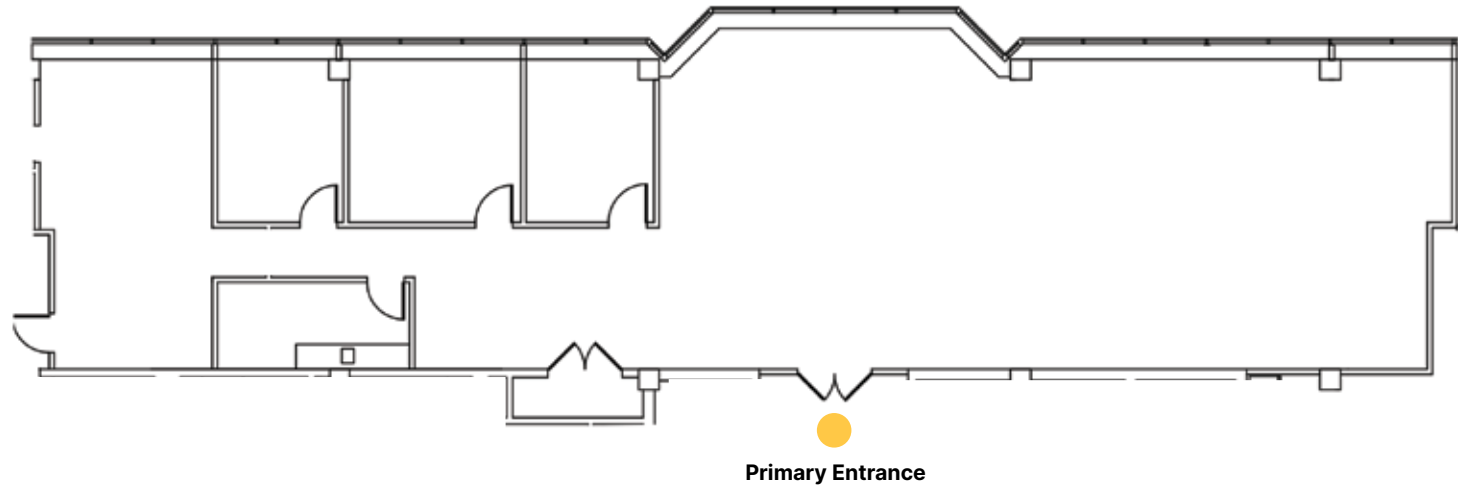
© 2024 CBRE, Inc. The information contained in this document has been obtained from sources believed reliable. While CBRE, Inc. does not doubt its accuracy, CBRE, Inc. has not verified it and makes no guarantee, warranty or representation about it. It is your responsibility to independently confirm its accuracy and completeness. Any projections, opinions, assumptions or estimates used are for example only and do not represent the current or future performance of the property. The value of this transaction to you depends on tax and other factors which should be evaluated by your tax, financial and legal advisors. You and your advisors should conduct a careful, independent investigation of the property to determine to your satisfaction the suitability of the property for your needs. Photos herein are the property of their respective owners and use of these images without the express written consent of the owner is prohibited.





**301
NORTH
ELM**

**Suite 426
3,708 RSF**



Site Key *Note: Drawing not to scale*

Richard Mossman
Richard.Mossman@cbre.com | +1 336 499 9956

Christy Crouch Smith
Christy.Smith@cbre.com | +1 336 544 2726

CBRE | CentrePort III | 101 Centreport Drive, Suite 160, Greensboro, NC 27409

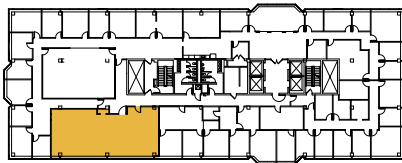
© 2024 CBRE, Inc. The information contained in this document has been obtained from sources believed reliable. While CBRE, Inc. does not doubt its accuracy, CBRE, Inc. has not verified it and makes no guarantee, warranty or representation about it. It is your responsibility to independently confirm its accuracy and completeness. Any projections, opinions, assumptions or estimates used are for example only and do not represent the current or future performance of the property. The value of this transaction to you depends on tax and other factors which should be evaluated by your tax, financial and legal advisors. You and your advisors should conduct a careful, independent investigation of the property to determine to your satisfaction the suitability of the property for your needs. Photos herein are the property of their respective owners and use of these images without the express written consent of the owner is prohibited.



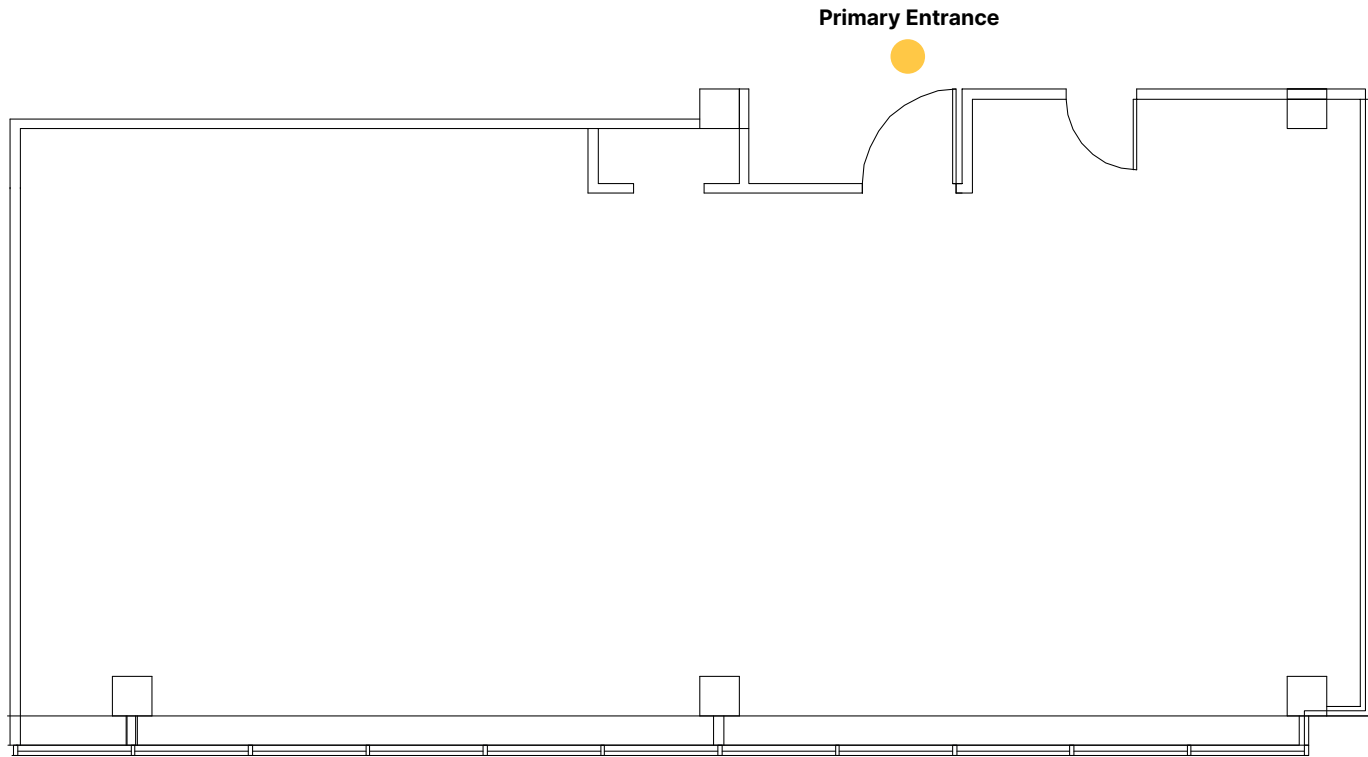


**301
NORTH
ELM**

**Suite 505
1,739 RSF**



Site Key *Note: Drawing not to scale*



Richard Mossman
Richard.Mossman@cbre-triad.com | +1 336 499 9956

Christy Crouch Smith
Christy.Smith@cbre-triad.com | +1 336 544 2726

CBRE | Triad | CentrePort III | 101 Centreport Drive, Suite 160, Greensboro, NC 27409

© 2023 CB Richard Ellis-Raleigh LLC, a Delaware limited liability company. The information contained in this document has been obtained from sources believed reliable. While CBRE, Inc. does not doubt its accuracy, CBRE, Inc. has not verified it and makes no guarantee, warranty or representation about it. It is your responsibility to independently confirm its accuracy and completeness. Any projections, opinions, assumptions or estimates used are for example only and do not represent the current or future performance of the property. The value of this transaction to you depends on tax and other factors which should be evaluated by your tax, financial and legal advisors. You and your advisors should conduct a careful, independent investigation of the property to determine to your satisfaction the suitability of the property for your needs. Photos herein are the property of their respective owners and use of these images without the express written consent of the owner is prohibited.

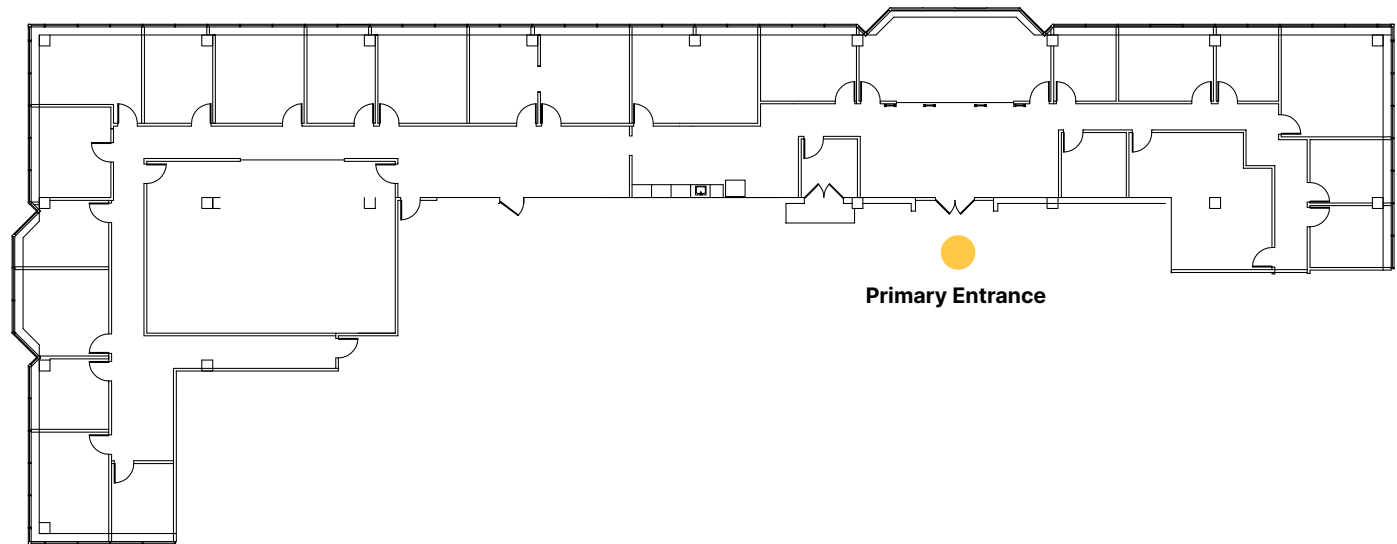


CBRE | Triad

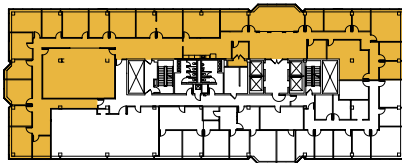


**301
NORTH
ELM**

**Suite 550
9,234 RSF**



Primary Entrance



Site Key *Note: Drawing not to scale*

Richard Mossman

Richard.Mossman@cbre-triad.com | +1 336 499 9956

Christy Crouch Smith

Christy.Smith@cbre-triad.com | +1 336 544 2726

CBRE | Triad | CentrePort III | 101 Centreport Drive, Suite 160, Greensboro, NC 27409

© 2023 CB Richard Ellis-Raleigh LLC, a Delaware limited liability company. The information contained in this document has been obtained from sources believed reliable. While CBRE, Inc. does not doubt its accuracy, CBRE, Inc. has not verified it and makes no guarantee, warranty or representation about it. It is your responsibility to independently confirm its accuracy and completeness. Any projections, opinions, assumptions or estimates used are for example only and do not represent the current or future performance of the property. The value of this transaction to you depends on tax and other factors which should be evaluated by your tax, financial and legal advisors. You and your advisors should conduct a careful, independent investigation of the property to determine to your satisfaction the suitability of the property for your needs. Photos herein are the property of their respective owners and use of these images without the express written consent of the owner is prohibited.

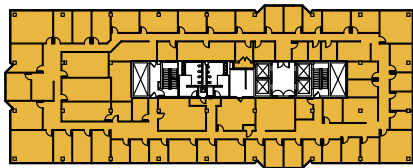
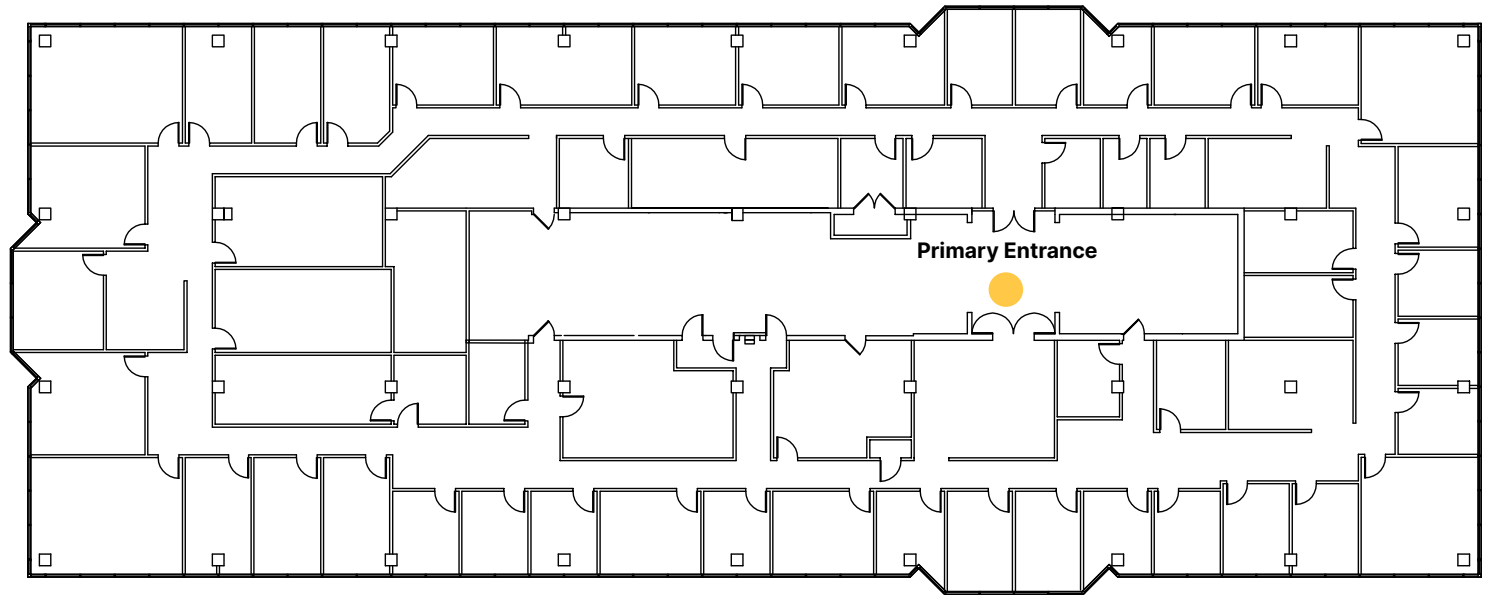


CBRE | Triad



**301
NORTH
ELM**

**Suite 600
16,787 RSF**



Site Key *Note: Drawing not to scale*

Richard Mossman
Richard.Mossman@cbre.com | +1 336 499 9956

Christy Crouch Smith
Christy.Smith@cbre.com | +1 336 544 2726

CBRE | CentrePort III | 101 Centreport Drive, Suite 160, Greensboro, NC 27409

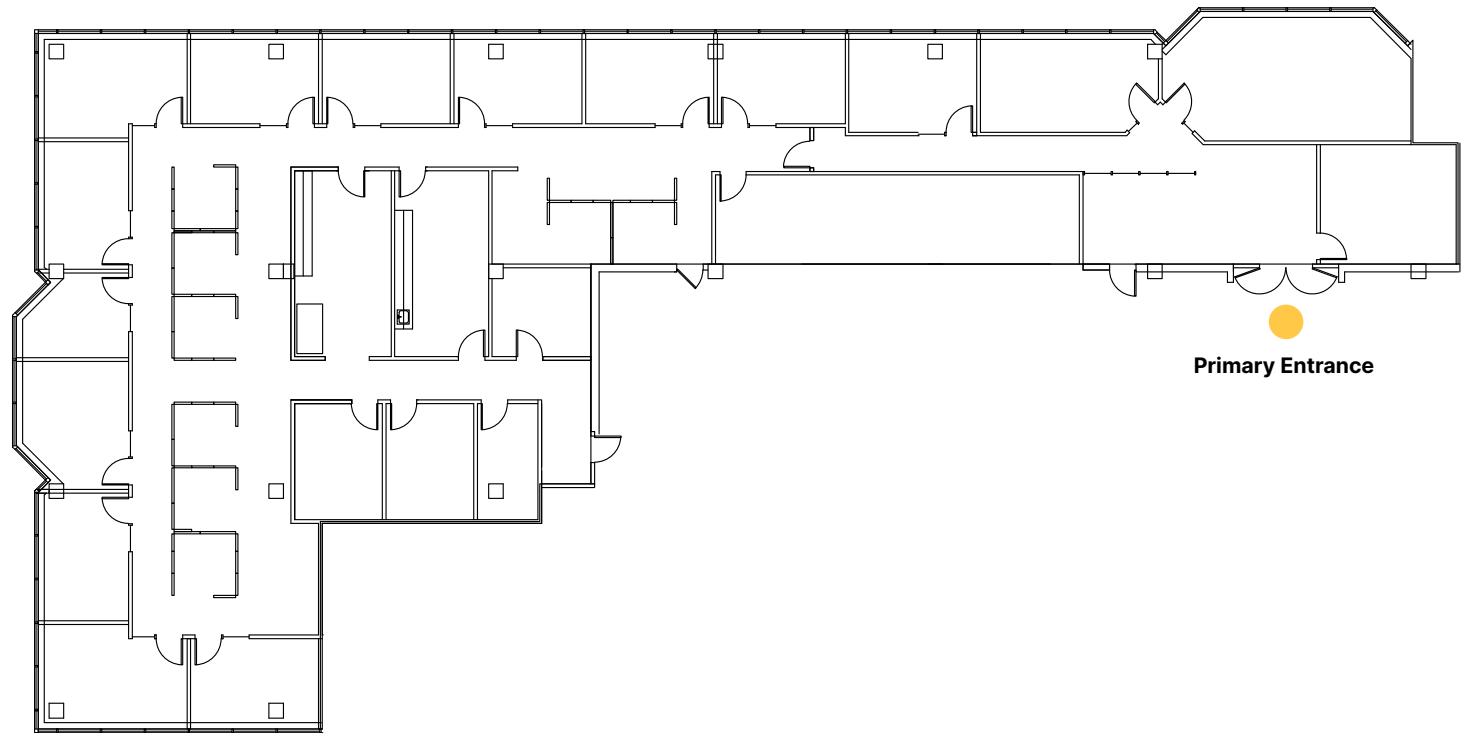
© 2024 CBRE, Inc. The information contained in this document has been obtained from sources believed reliable. While CBRE, Inc. does not doubt its accuracy, CBRE, Inc. has not verified it and makes no guarantee, warranty or representation about it. It is your responsibility to independently confirm its accuracy and completeness. Any projections, opinions, assumptions or estimates used are for example only and do not represent the current or future performance of the property. The value of this transaction to you depends on tax and other factors which should be evaluated by your tax, financial and legal advisors. You and your advisors should conduct a careful, independent investigation of the property to determine to your satisfaction the suitability of the property for your needs. Photos herein are the property of their respective owners and use of these images without the express written consent of the owner is prohibited.





**301
NORTH
ELM**

**Suite 700
7,872 RSF**



Site Key *Note: Drawing not to scale*

Richard Mossman
Richard.Mossman@cbre.com | +1 336 499 9956

Christy Crouch Smith
Christy.Smith@cbre.com | +1 336 544 2726

CBRE | CentrePort III | 101 Centreport Drive, Suite 160, Greensboro, NC 27409

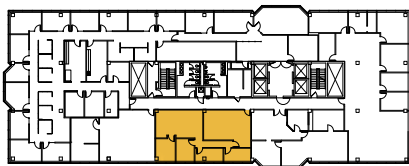
© 2024 CBRE, Inc. The information contained in this document has been obtained from sources believed reliable. While CBRE, Inc. does not doubt its accuracy, CBRE, Inc. has not verified it and makes no guarantee, warranty or representation about it. It is your responsibility to independently confirm its accuracy and completeness. Any projections, opinions, assumptions or estimates used are for example only and do not represent the current or future performance of the property. The value of this transaction to you depends on tax and other factors which should be evaluated by your tax, financial and legal advisors. You and your advisors should conduct a careful, independent investigation of the property to determine to your satisfaction the suitability of the property for your needs. Photos herein are the property of their respective owners and use of these images without the express written consent of the owner is prohibited.





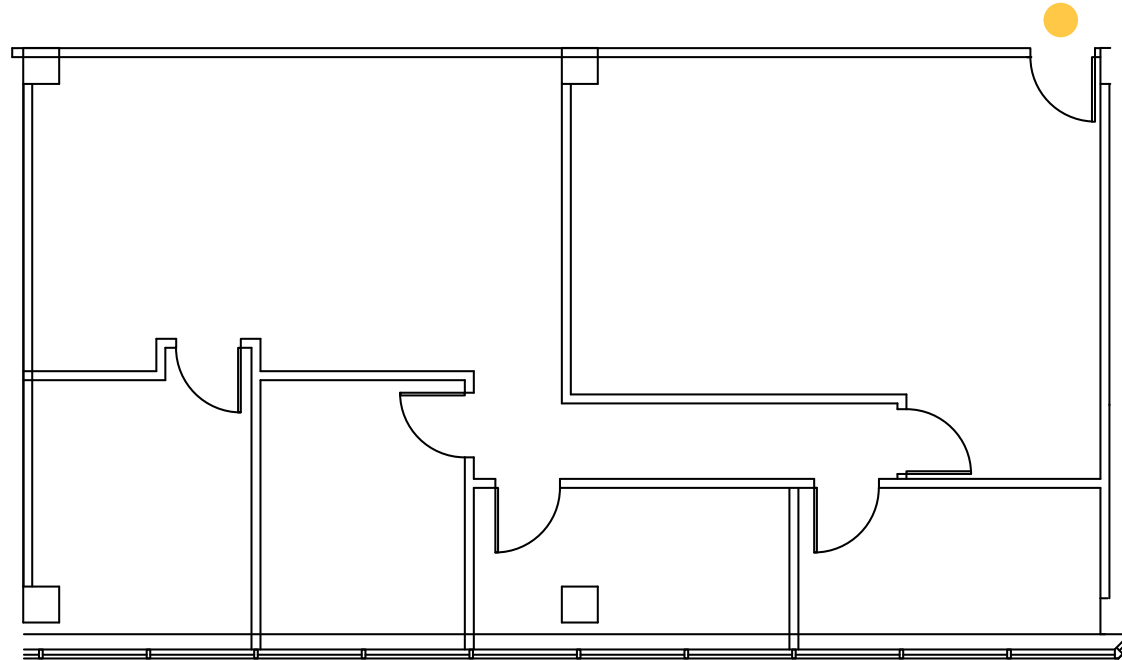
**301
NORTH
ELM**

**Suite 701
1,603 RSF**



Site Key *Note: Drawing not to scale*

Primary Entrance



Richard Mossman
Richard.Mossman@cbre.com | +1 336 499 9956

Christy Crouch Smith
Christy.Smith@cbre.com | +1 336 544 2726

CBRE | CentrePort III | 101 Centreport Drive, Suite 160, Greensboro, NC 27409

© 2024 CBRE, Inc. The information contained in this document has been obtained from sources believed reliable. While CBRE, Inc. does not doubt its accuracy, CBRE, Inc. has not verified it and makes no guarantee, warranty or representation about it. It is your responsibility to independently confirm its accuracy and completeness. Any projections, opinions, assumptions or estimates used are for example only and do not represent the current or future performance of the property. The value of this transaction to you depends on tax and other factors which should be evaluated by your tax, financial and legal advisors. You and your advisors should conduct a careful, independent investigation of the property to determine to your satisfaction the suitability of the property for your needs. Photos herein are the property of their respective owners and use of these images without the express written consent of the owner is prohibited.



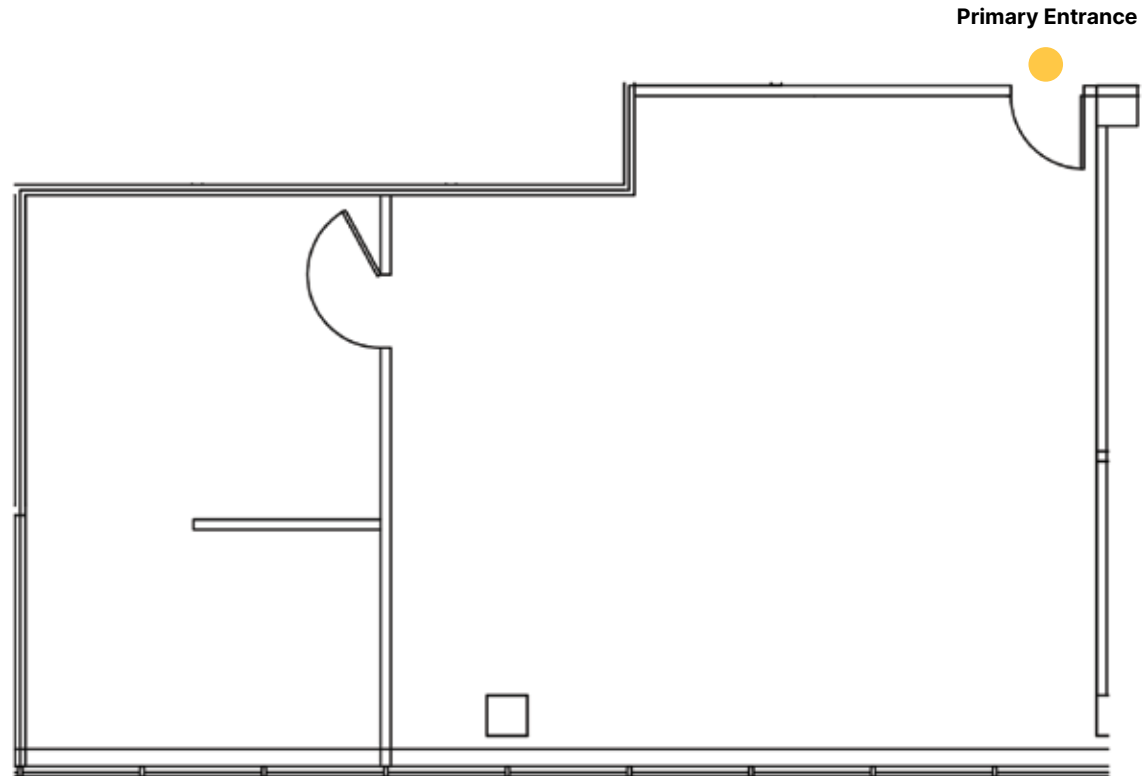


**301
NORTH
ELM**

**Suite 702
1,302 RSF**



Site Key *Note: Drawing not to scale*



Richard Mossman
Richard.Mossman@cbre.com | +1 336 499 9956

Christy Crouch Smith
Christy.Smith@cbre.com | +1 336 544 2726

CBRE | CentrePort III | 101 Centreport Drive, Suite 160, Greensboro, NC 27409

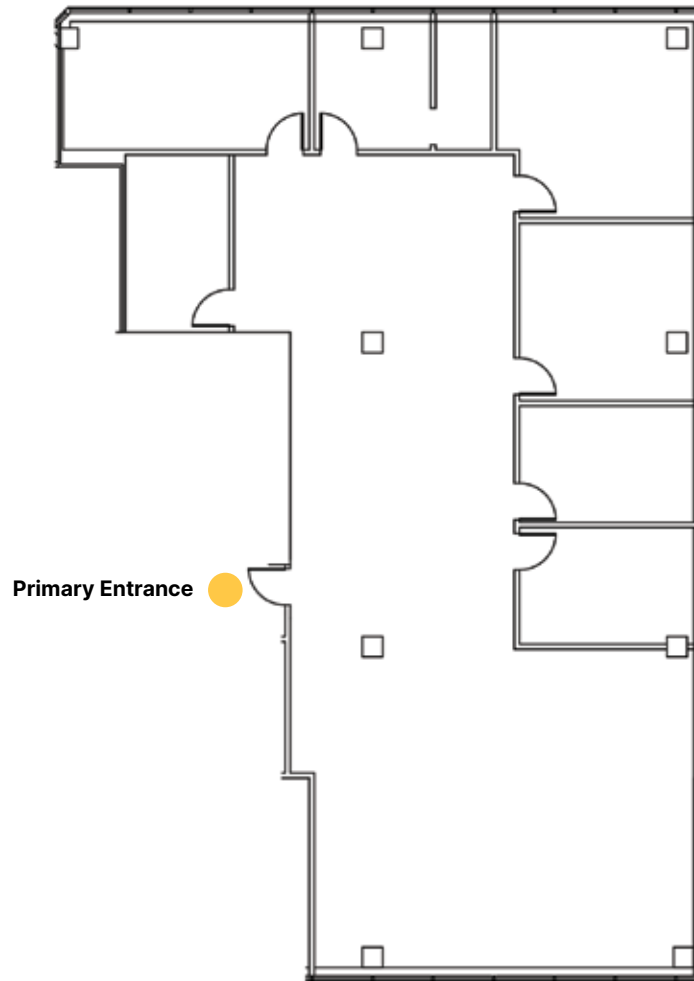
© 2024 CBRE, Inc. The information contained in this document has been obtained from sources believed reliable. While CBRE, Inc. does not doubt its accuracy, CBRE, Inc. has not verified it and makes no guarantee, warranty or representation about it. It is your responsibility to independently confirm its accuracy and completeness. Any projections, opinions, assumptions or estimates used are for example only and do not represent the current or future performance of the property. The value of this transaction to you depends on tax and other factors which should be evaluated by your tax, financial and legal advisors. You and your advisors should conduct a careful, independent investigation of the property to determine to your satisfaction the suitability of the property for your needs. Photos herein are the property of their respective owners and use of these images without the express written consent of the owner is prohibited.





**301
NORTH
ELM**

**Suite 707
3,541 RSF**



Site Key *Note: Drawing not to scale*

Richard Mossman
Richard.Mossman@cbre.com | +1 336 499 9956

Christy Crouch Smith
Christy.Smith@cbre.com | +1 336 544 2726



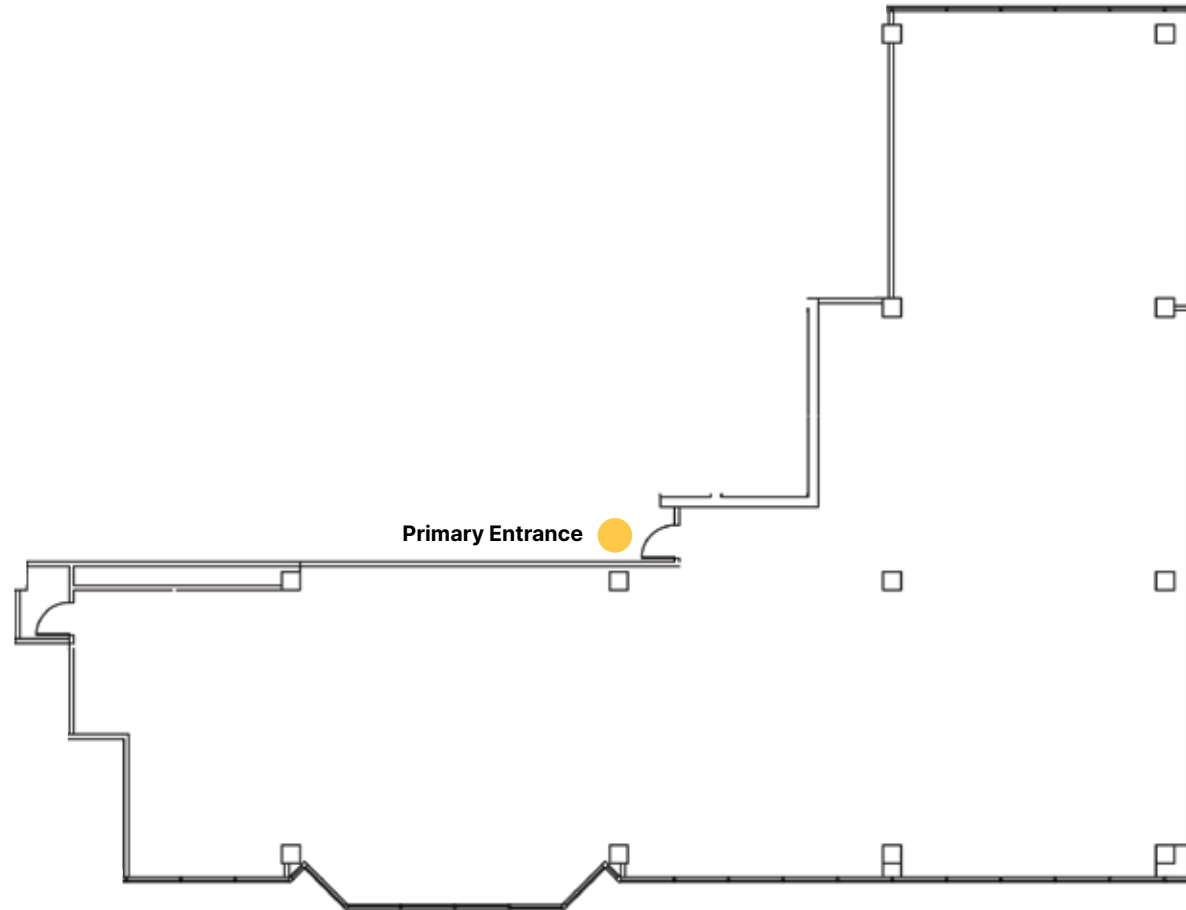
CBRE | CentrePort III | 101 Centreport Drive, Suite 160, Greensboro, NC 27409

© 2024 CBRE, Inc. The information contained in this document has been obtained from sources believed reliable. While CBRE, Inc. does not doubt its accuracy, CBRE, Inc. has not verified it and makes no guarantee, warranty or representation about it. It is your responsibility to independently confirm its accuracy and completeness. Any projections, opinions, assumptions or estimates used are for example only and do not represent the current or future performance of the property. The value of this transaction to you depends on tax and other factors which should be evaluated by your tax, financial and legal advisors. You and your advisors should conduct a careful, independent investigation of the property to determine to your satisfaction the suitability of the property for your needs. Photos herein are the property of their respective owners and use of these images without the express written consent of the owner is prohibited.



**301
NORTH
ELM**

**Suite 800
5,211 RSF**



Site Key *Note: Drawing not to scale*

Richard Mossman
Richard.Mossman@cbre.com | +1 336 499 9956

Christy Crouch Smith
Christy.Smith@cbre.com | +1 336 544 2726

CBRE | CentrePort III | 101 Centreport Drive, Suite 160, Greensboro, NC 27409

© 2024 CBRE, Inc. The information contained in this document has been obtained from sources believed reliable. While CBRE, Inc. does not doubt its accuracy, CBRE, Inc. has not verified it and makes no guarantee, warranty or representation about it. It is your responsibility to independently confirm its accuracy and completeness. Any projections, opinions, assumptions or estimates used are for example only and do not represent the current or future performance of the property. The value of this transaction to you depends on tax and other factors which should be evaluated by your tax, financial and legal advisors. You and your advisors should conduct a careful, independent investigation of the property to determine to your satisfaction the suitability of the property for your needs. Photos herein are the property of their respective owners and use of these images without the express written consent of the owner is prohibited.

