

OFFICE
CONDO

FOR LEASE

17916 MURPHY PARKWAY • LATHROP • CA • 95330-8771



CLICK TO VIEW
THE DRONE VIDEO



The information contained herein is deemed reliable, but is not guaranteed. To discuss this property or any other commercial need, please contact:

**HIGH
PRICE &
LEFFLER**
ASSOCIATES

PMZ COMMERCIAL
SINCE 1957 REAL ESTATE

RANDY HIGH JR., CCIM
CALBRE Lic. No. 01238404
(209) 491-3413
RANDYHIGHJR@GMAIL.COM

DANNY PRICE
CALBRE Lic. No. 01895497
(209) 491-3415
DPRICE@PMZ.COM

DESIREE HOLLAND
ADMINISTRATIVE & MARKETING ASSISTANT
(209) 672-6792
DES@PMZ.COM

ADDRESS: 17916 Murphy Road • Lathrop • CA
LEASE RATE: \$1.95 PSF plus CAM
AVAILABLE SF: ± 1,500 SF
PARCEL NUMBER: 198-250-060

YEAR BUILT: 2006
COUNTY: San Joaquin
PROPERTY TYPE: Industrial Condo
PROCURING BROKER FEE: 2.5%

PROPERTY DESCRIPTION:

17916 Murphy Parkway is a rare professional office condo located in the well-maintained D'Arcy Business Park, at the corner of D'Arcy Parkway and Murphy Parkway. The property offers excellent visibility from D'Arcy Parkway and is in close proximity to the River Island Master Plan Community. Additionally, it provides convenient access to both Highway 5 and Highway 120.

HIGHLIGHTS:

- Two (2) Offices
- Kitchen
- Restroom
- Storage Room
- Large Open Area



The information contained herein is deemed reliable, but is not guaranteed. To discuss this property or any other commercial need, please contact:

**HIGH
PRICE &
LEFFLER**
ASSOCIATES

PMZ COMMERCIAL
SINCE 1957 REAL ESTATE

RANDY HIGH JR., CCIM
CALBRE Lic. No. 01238404
(209) 491-3413
RANDYHIGHJR@GMAIL.COM

DANNY PRICE
CALBRE Lic. No. 01895497
(209) 491-3415
DPRICE@PMZ.COM

DESIREE HOLLAND
ADMINISTRATIVE & MARKETING ASSISTANT
(209) 672-6792
DES@PMZ.COM

OFFICE CONDO

LOCATION MAP



The information contained herein is deemed reliable, but is not guaranteed. To discuss this property or any other commercial need, please contact:

**HIGH
PRICE &
LEFFLER**
ASSOCIATES

PMZ COMMERCIAL
SINCE 1957 REAL ESTATE

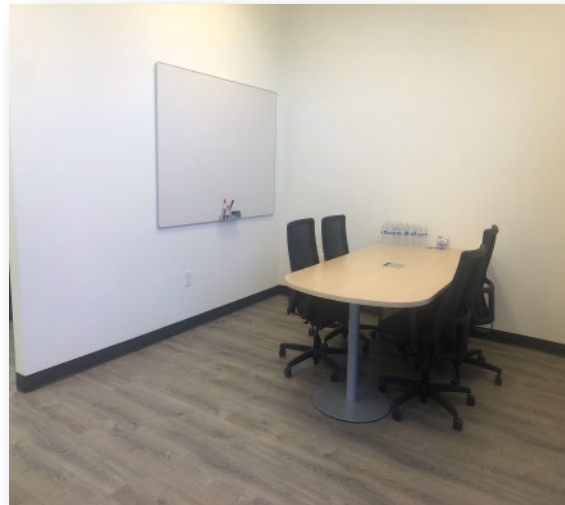
RANDY HIGH JR., CCIM
CALBRE Lic. No. 01238404
(209) 491-3413
RANDYHIGHJR@GMAIL.COM

DANNY PRICE
CALBRE Lic. No. 01895497
(209) 491-3415
DPRICE@PMZ.COM

DESIREE HOLLAND
ADMINISTRATIVE & MARKETING ASSISTANT
(209) 672-6792
DES@PMZ.COM

OFFICE CONDO

PHOTO GALLERY



The information contained herein is deemed reliable, but is not guaranteed. To discuss this property or any other commercial need, please contact:

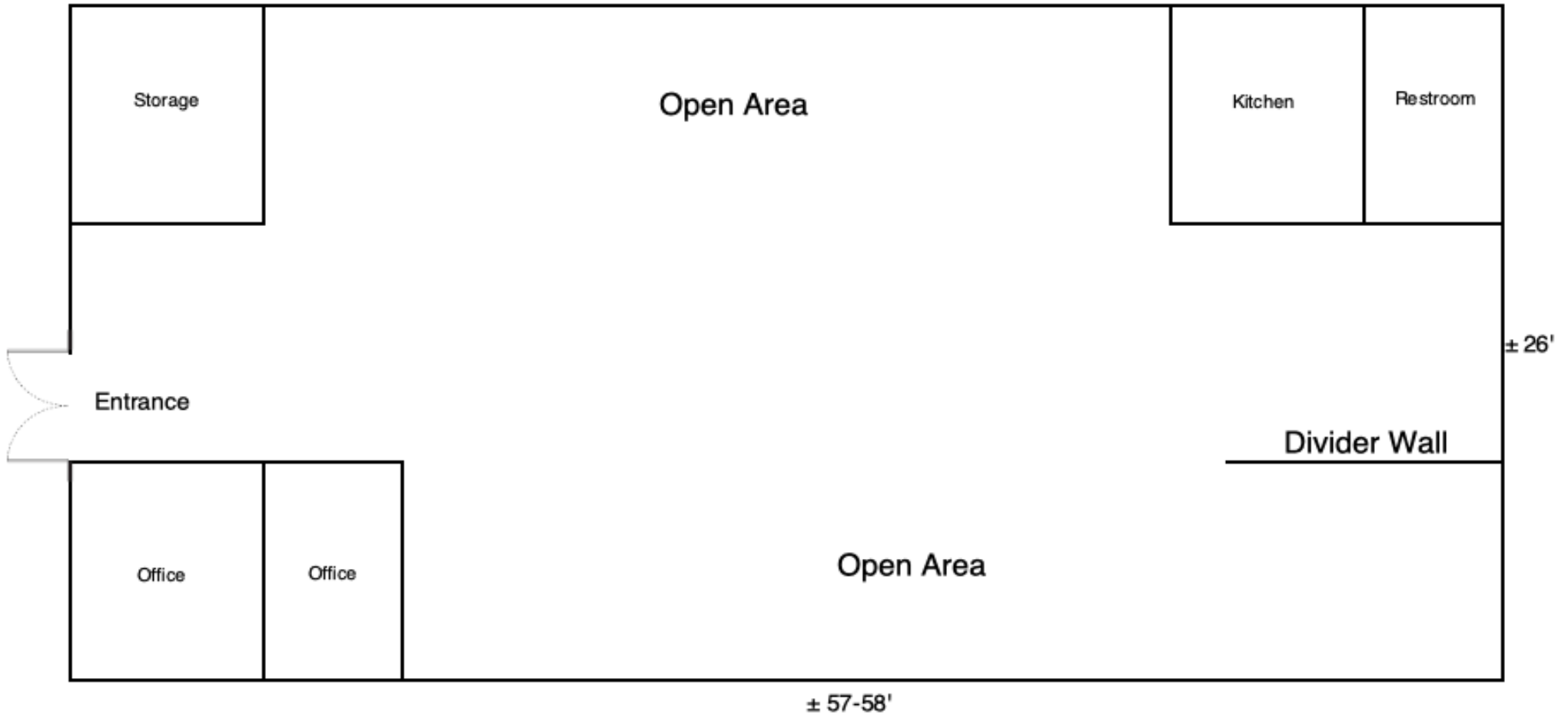
**HIGH
PRICE &
LEFFLER**
ASSOCIATES

PMZ COMMERCIAL
SINCE 1957 REAL ESTATE

RANDY HIGH JR., CCIM
CALBRE Lic. No. 01238404
(209) 491-3413
RANDYHIGHJR@GMAIL.COM

DANNY PRICE
CALBRE Lic. No. 01895497
(209) 491-3415
DPRICE@PMZ.COM

DESIREE HOLLAND
ADMINISTRATIVE & MARKETING ASSISTANT
(209) 672-6792
DES@PMZ.COM



The information contained herein is deemed reliable, but is not guaranteed. To discuss this property or any other commercial need, please contact:

**HIGH
PRICE &
LEFFLER**
ASSOCIATES

PMZ COMMERCIAL
SINCE 1957 REAL ESTATE

RANDY HIGH JR., CCIM
CALBRE Lic. No. 01238404
(209) 491-3413
RANDYHIGHJR@GMAIL.COM

DANNY PRICE
CALBRE Lic. No. 01895497
(209) 491-3415
DPRICE@PMZ.COM

DESIREE HOLLAND
ADMINISTRATIVE & MARKETING ASSISTANT
(209) 672-6792
DES@PMZ.COM

OFFICE
CONDO

AERIAL VIEW



The information contained herein is deemed reliable, but is not guaranteed. To discuss this property or any other commercial need, please contact:

**HIGH
PRICE &
LEFFLER**
ASSOCIATES

PMZ COMMERCIAL
SINCE 1957 REAL ESTATE

RANDY HIGH JR., CCIM
CALBRE Lic. No. 01238404
(209) 491-3413
RANDYHIGHJR@GMAIL.COM

DANNY PRICE
CALBRE Lic. No. 01895497
(209) 491-3415
DPRICE@PMZ.COM

DESIREE HOLLAND
ADMINISTRATIVE & MARKETING ASSISTANT
(209) 672-6792
DES@PMZ.COM

PARCEL MAP



The information contained herein is deemed reliable, but is not guaranteed. To discuss this property or any other commercial need, please contact:

**HIGH
PRICE &
LEFFLER**
ASSOCIATES

PMZ COMMERCIAL
SINCE 1957 REAL ESTATE

RANDY HIGH JR., CCIM
CALBRE Lic. No. 01238404
(209) 491-3413
RANDYHIGHJR@GMAIL.COM

DANNY PRICE
CALBRE Lic. No. 01895497
(209) 491-3415
DPRICE@PMZ.COM

DESIREE HOLLAND
ADMINISTRATIVE & MARKETING ASSISTANT
(209) 672-6792
DES@PMZ.COM