

# For sale or lease

2620 Fleur Drive, Des  
Moines, Iowa 50321

## ±10,816 RSF

*\*Divisible by 5,408 SF*

**Sale price: \$800,000**

**Lease rate: \$7.00 - \$8.25 PSF NNN**



### Property specifications

- Est. OPEX: Available upon request
- Located minutes to CBD and DSM Int'l Airport off Fleur Drive
- Ample parking field in front of building
- Two story block construction
- Currently built out with classroom setting (11 rooms)
- Newly remodeled, includes new breakroom and bathrooms
- Both floors accessible at grade level
- Area amenities include Water Works Park, Gray's Lake, and access to Des Moines CBD via Martin Luther King Dr. Parkway

**Contact broker for  
additional information**

[jll.com/des-moines](http://jll.com/des-moines)

Jones Lang LaSalle Brokerage, Inc.

**Lucas Hedstrom**

Vice President

+1 515 564 9269

[lucas.hedstrom@jll.com](mailto:lucas.hedstrom@jll.com)

**Justin Lossner, CCIM, SIOR**

Senior Managing Director

+1 515 499 8679

[justin.lossner@jll.com](mailto:justin.lossner@jll.com)

## Floor plans | Overall

Availability:  $\pm 10,816$  RSF (divisible by 5,408 SF)

Sale price: \$800,000

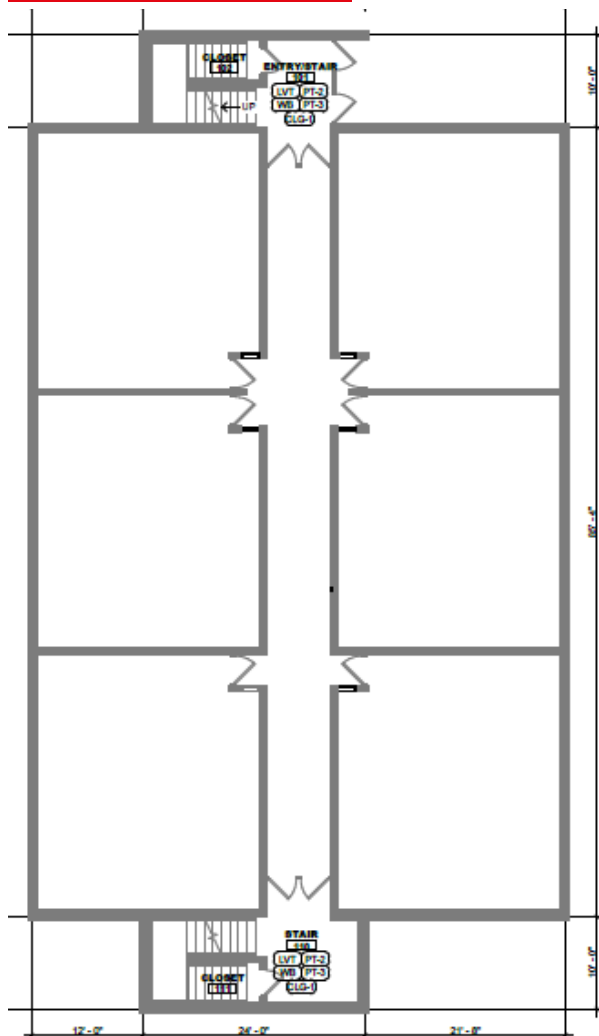
Lease rate: \$7.00 - \$8.25 PSF NNN

Est. OPEX: Available upon Request

### Garden level

5,408 SF

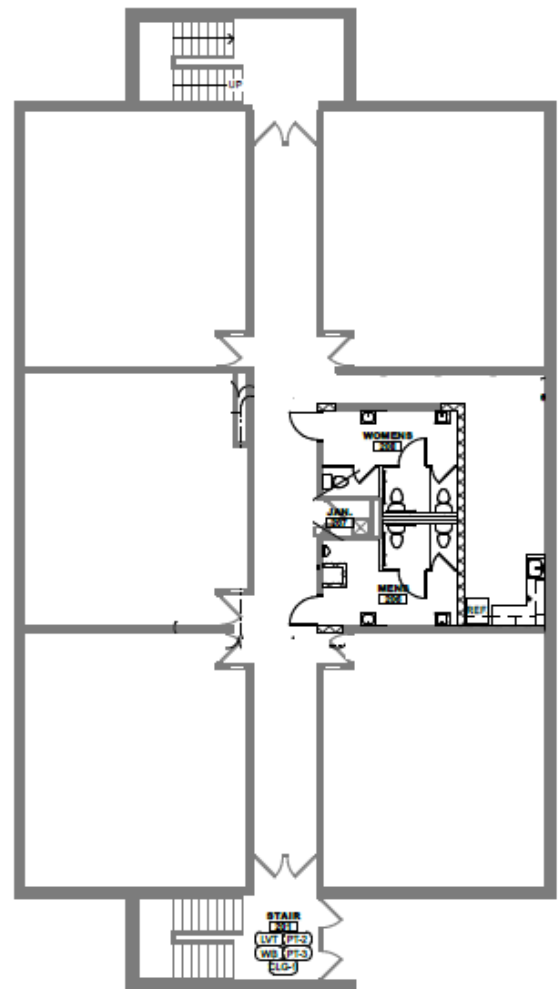
\$7.00 NNN



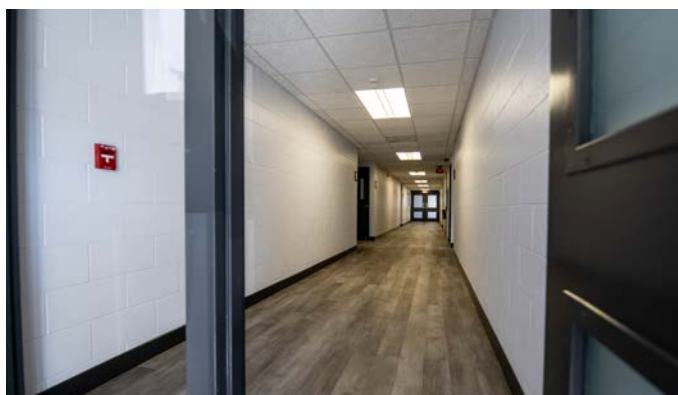
### Upper level

5,408 SF

\$8.25 NNN



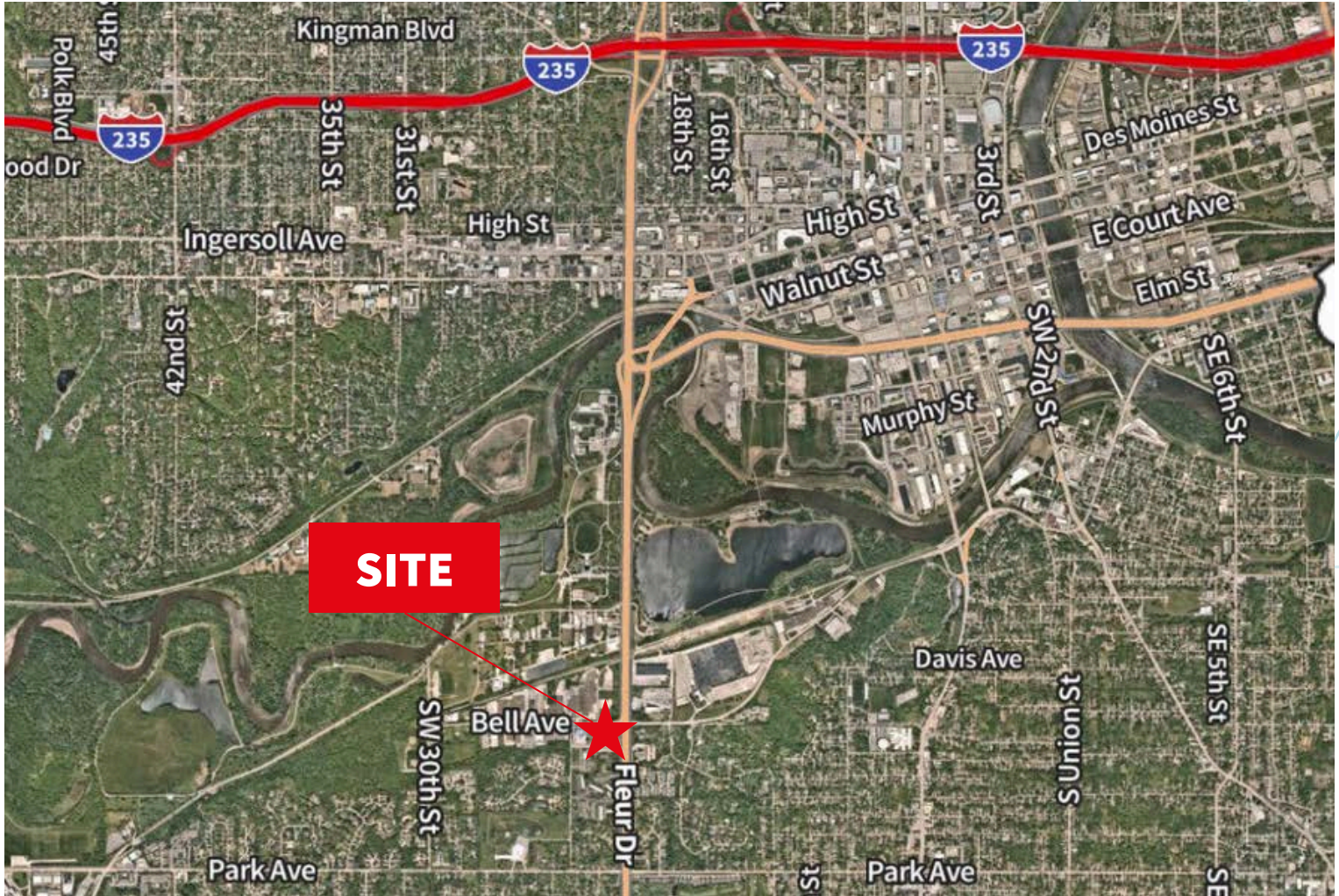
## Images





# For sale or lease

2620 Fleur Drive | Des Moines, Iowa 50321



**Contact broker for  
additional information**

[jll.com/des-moines](http://jll.com/des-moines)

**Lucas Hedstrom**

Vice President

+1 515 564 9269

[lucas.hedstrom@jll.com](mailto:lucas.hedstrom@jll.com)

**Justin Lossner, CCIM, SIOR**

Senior Managing Director

+1 515 499 8679

[justin.lossner@jll.com](mailto:justin.lossner@jll.com)