

3

HANOVER STREET

EAST BLOCK BETWEEN  
EXCHANGE PLACE & WALL STREET



SPACE A



SPACE B  
ENTRANCE TO LOWER



SPACE A + B  
ENTRANCE TO LOWER



INTERIOR LOWER LEVEL  
CONCEPTUAL RENDERING



## APPROXIMATE SIZE

<span style="color: #00AEEF;">■</span> SPACE A	GROUND FLOOR	876 SF
	CAN BE COMBINED WITH SPACE B	
<span style="color: #E67E22;">■</span> SPACE B	GROUND FLOOR	828 SF
	LOWER LEVEL	5,619 SF
	CAN BE COMBINED WITH SPACE A	
	VERTICAL TRANSPORTATION IN PLACE	

## FRONTAGE

<span style="color: #00AEEF;">■</span> SPACE A	15'
<span style="color: #E67E22;">■</span> SPACE B	15'

## CEILING HEIGHTS

<span style="color: #E67E22;">■</span> SPACE B	
LOWER LEVEL	16'

## POSSESSION

<span style="color: #00AEEF;">■</span> IMMEDIATE
<span style="color: #E67E22;">■</span> IMMEDIATE

## HIGHLIGHTS

- AMONGST FIDI'S BEST RETAIL AND FAST CASUAL LINEUP
- AT THE BASE OF 816 UNIT LUXURY RESIDENTIAL BUILDING
- MOST USES CONSIDERED

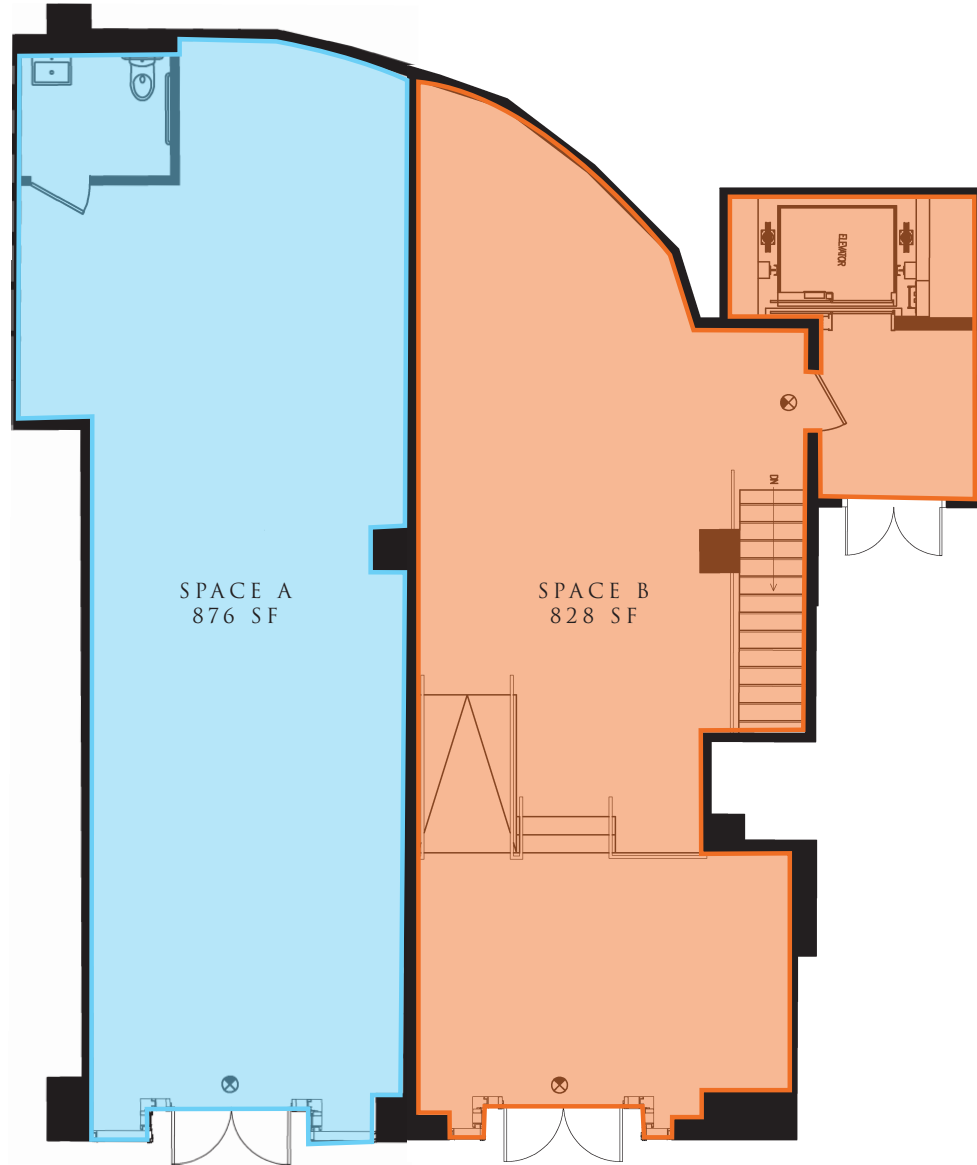
## TRANSPORTATION



## NEIGHBORHOOD TENANTS

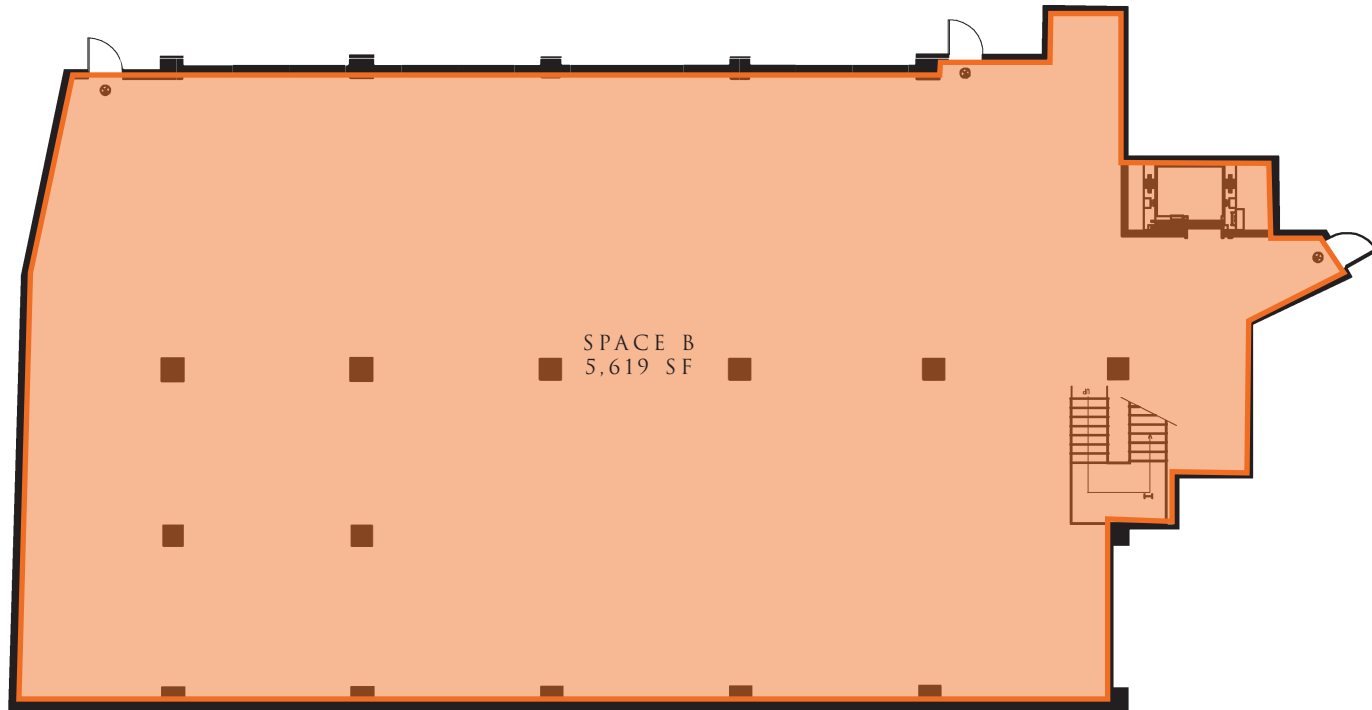


FLOOR PLANS  
GROUND FLOOR

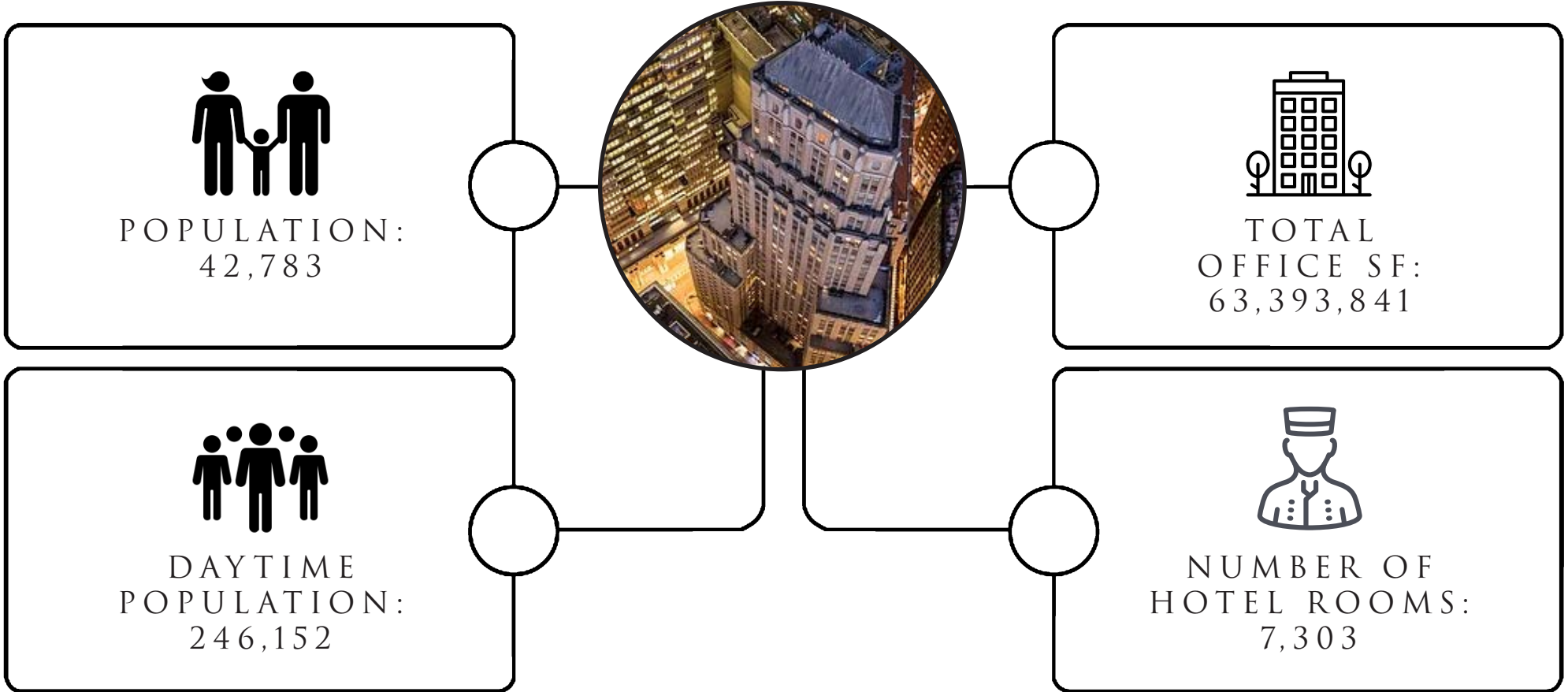


HANOVER STREET

FLOOR PLANS  
LOWER LEVEL



# NEIGHBORHOOD DEMOGRAPHICS





THE HEART OF  
THE FINANCIAL DISTRICT

FOR MORE INFORMATION,  
PLEASE CONTACT:

**BRANDON BERGER**

646.236.8525 | [BBerger@ksrny.com](mailto:BBerger@ksrny.com)

**ZACH NATHAN**

240.731.8333 | [ZNathan@ksrny.com](mailto:ZNathan@ksrny.com)

**MATT FOGEL**

203.962.5800 | [MFogel@ksrny.com](mailto:MFogel@ksrny.com)

