

Barta Bailey

RETAIL/OFFICE SPACE FOR LEASE
1 NORTHEAST 2ND STREET STE 210, OKC, OK 73104



Property Description

Deep Deuce retail/office available for lease. This suite is ideal for retail or open floor plan office use and includes finished restroom, storage area, white oak millwork and polished concrete floors. Dedicated parking is available for tenants in addition to street parking.

Neighbors include Blok Bar, Wheeze the Juice, Dental 32, Willow Coffee Company and Aloft Hotel.

Property Highlights

- Walkable, urban location
- Move-in ready
- Flexible lease term
- Elevated millwork and flooring finishes

Offering Summary

Lease Rate:	\$20.00 SF/yr (NNN)
Available SF:	1,286 SF

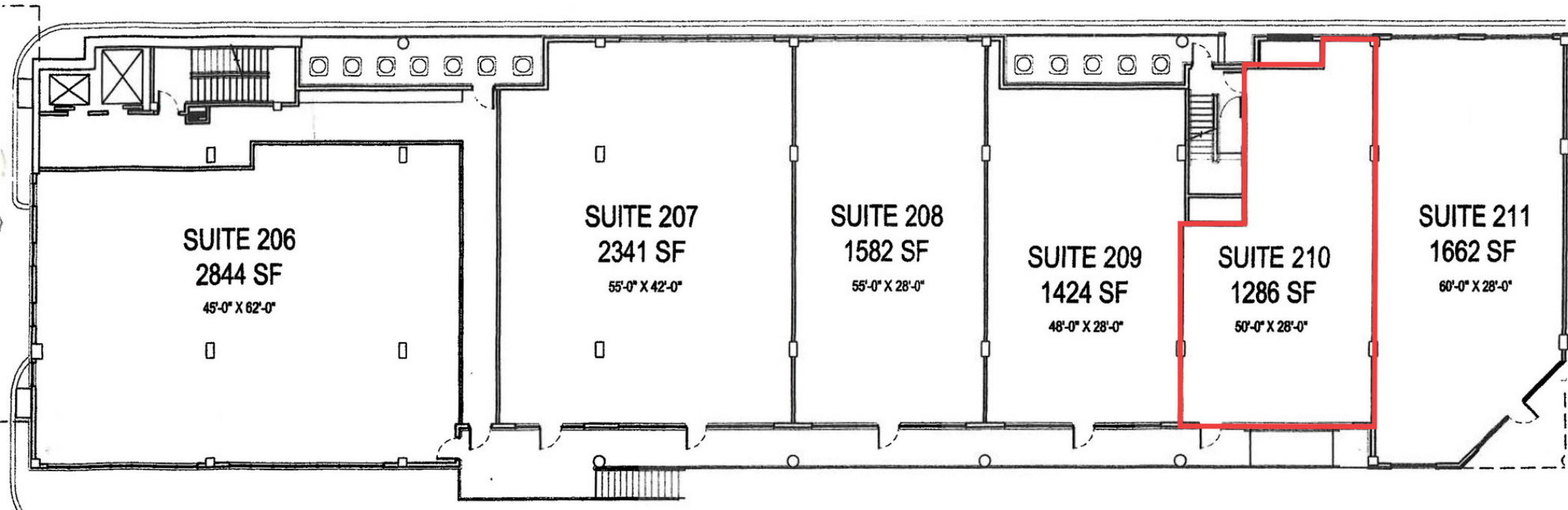
Barta Bailey

RETAIL/OFFICE SPACE FOR LEASE
1 NORTHEAST 2ND STREET STE 210, OKC, OK 73104



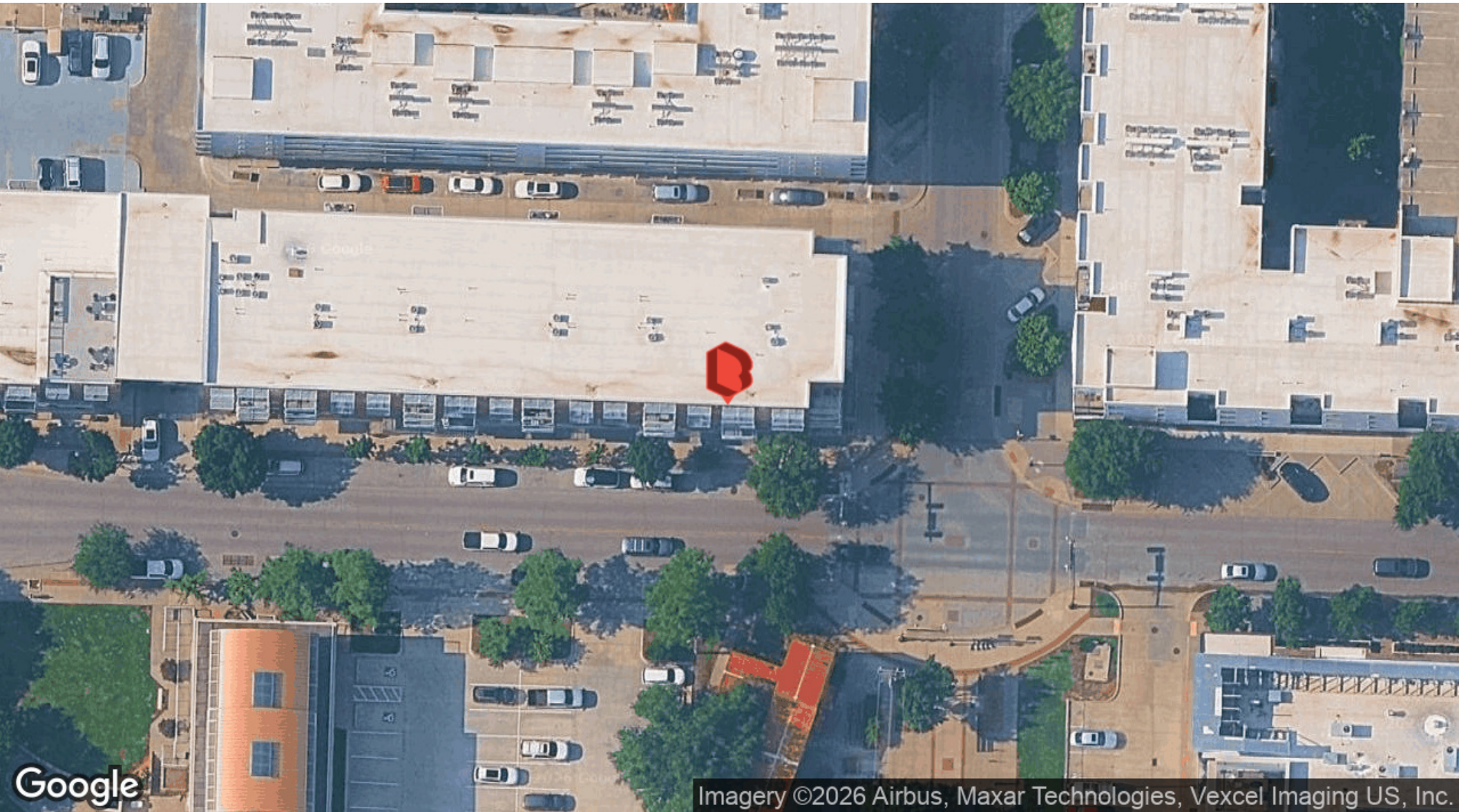
Barta Bailey

RETAIL/OFFICE SPACE FOR LEASE
APPROXIMATE FLOOR PLAN (DOESN'T INCLUDE EXISTING RESTROOM & STORAGE)



Barta Bailey

RETAIL/OFFICE SPACE FOR LEASE
1 NORTHEAST 2ND STREET STE 210, OKC, OK 73104



ALLISON BAILEY

405.620.3883

ALLISON@BARTABAILEY.COM

BARTABAILEY.COM
