

# LAKE PARK LOGISTICS CENTER

1100 Old Dixie Hwy | Lake Park, FL 33403

EXCELLENT LOCATION | TREMENDOUS VISIBILITY



## PROPERTY HIGHLIGHTS

- Class A Single Building Industrial Development
- Up to  $\pm 114,361$  SF Available, Including 2,900 SF Office Space
- Divisible From  $\pm 29,500$  SF to  $\pm 114,361$  SF
- $\pm 2$  Acres of Excess Land for Trailer Parking, Outside Storage or Auto Parking
- Excellent Eastern Palm Beach County Location with Many Surrounding Amenities

## AVAILABLE FOR IMMEDIATE OCCUPANCY

### ROBERT SMITH

Executive Vice President  
+1 561 707 5558  
robert.c.smith@cbre.com

### KIRK NELSON

Executive Vice President  
+1 561 716 9936  
kirk.nelson@cbre.com

**CBRE**

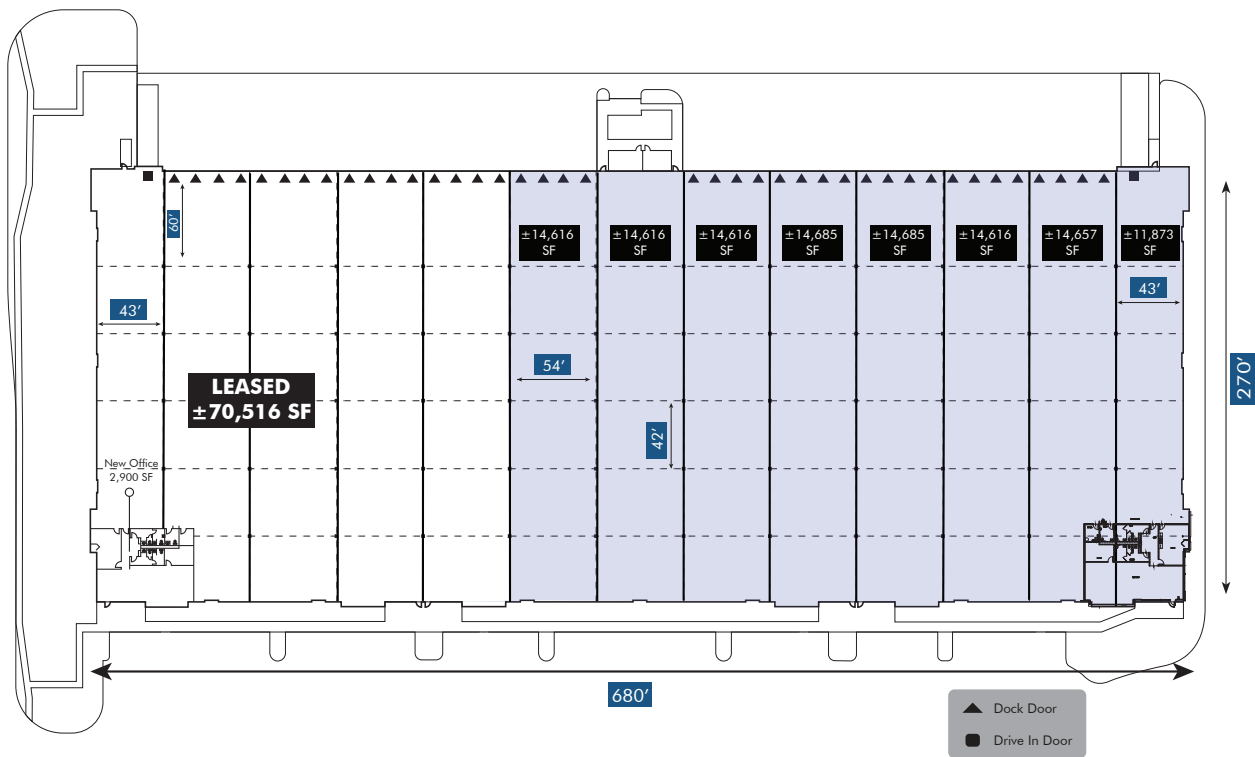
**Dalfen**  
INDUSTRIAL

# LAKE PARK LOGISTICS CENTER

1100 Old Dixie Hwy | Lake Park, FL 33403

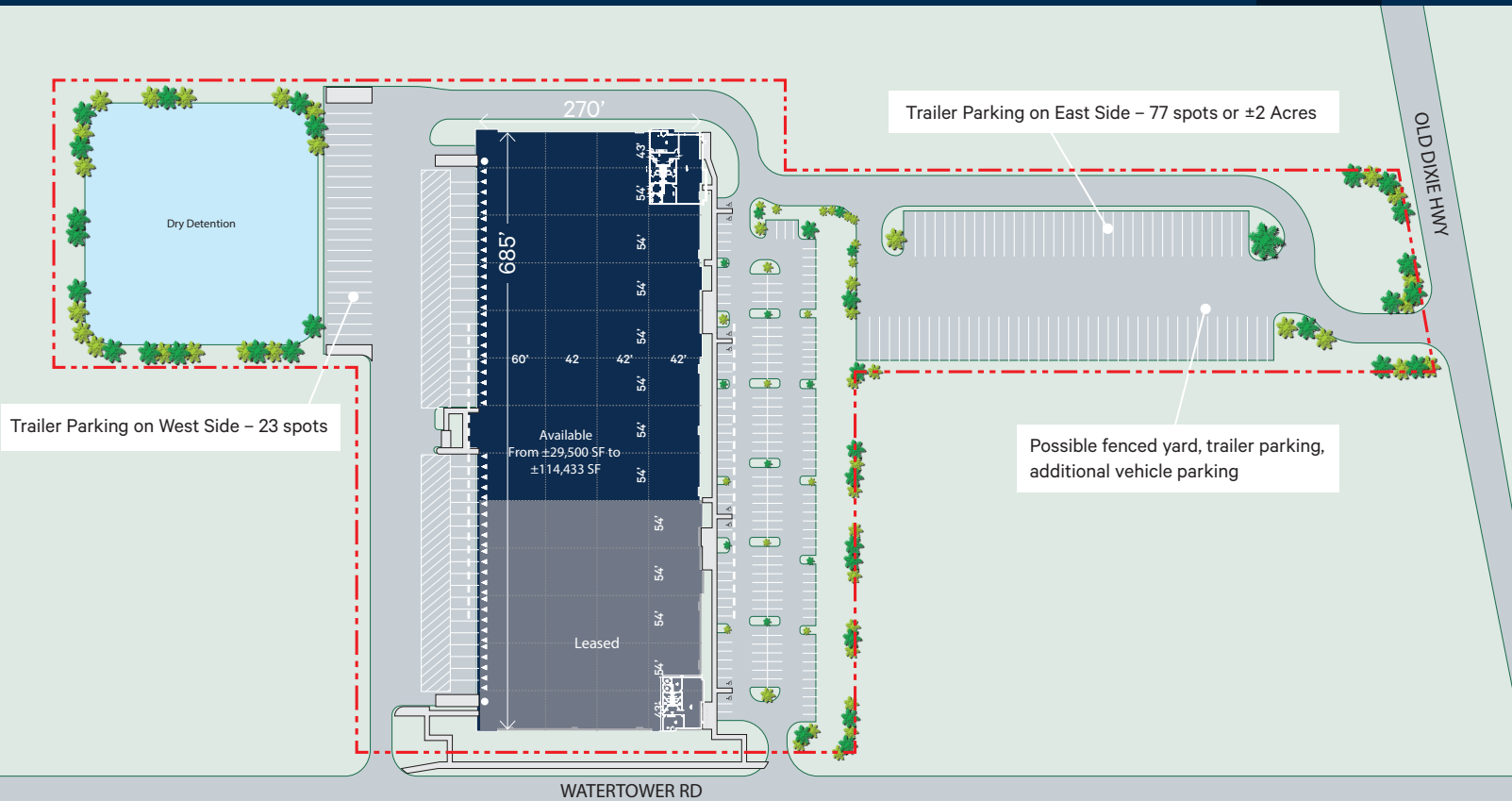


## FULL FLOOR PLAN



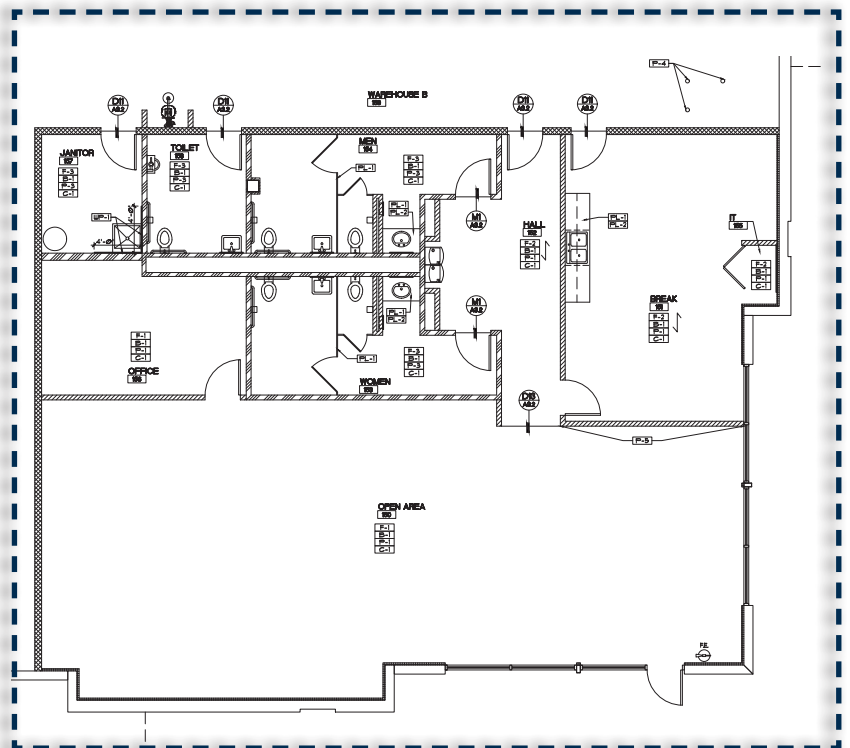
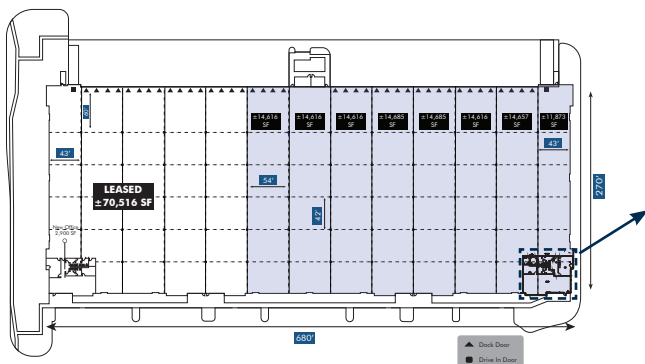


# FULL SITE PLAN



## AVAILABLE SPACE

±114,361 SF Available  
Divisible from ±29,500 SF  
Including 2,900 SF Office Space



**ROBERT SMITH**  
Executive Vice President  
+1 561 707 5558  
robert.c.smith@cbre.com

**KIRK NELSON**  
Executive Vice President  
+1 561 716 9936  
kirk.nelson@cbre.com

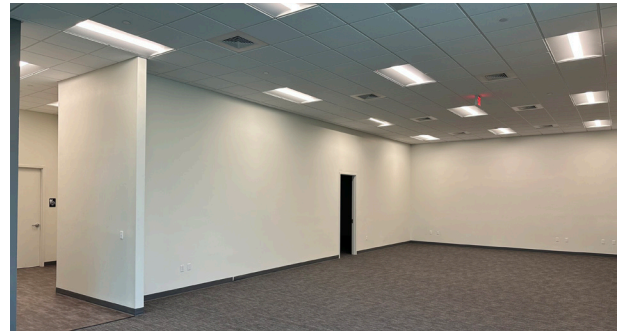


# LAKE PARK LOGISTICS CENTER

1100 Old Dixie Hwy | Lake Park, FL 33403



## INTERIOR PHOTOS



### ROBERT SMITH

Executive Vice President  
+1 561 707 5558  
robert.c.smith@cbre.com

### KIRK NELSON

Executive Vice President  
+1 561 716 9936  
kirk.nelson@cbre.com

**CBRE**

**Dalfen**  
INDUSTRIAL

CBRE © 2024 All Rights Reserved. All information included in this letter/proposal pertaining to CBRE—including but not limited to its operations, employees, technology and clients—is proprietary and confidential and supplied with the understanding that such information will be held in confidence and not disclosed to any third party without CBRE's prior written consent. This letter/proposal is intended solely as a preliminary expression of general intentions, is for discussion purposes only, and does not create any agreement or obligation by CBRE to negotiate or continue negotiations. CBRE shall have no contractual obligations with respect to the matters referred to herein unless and until a definitive, fully executed agreement has been delivered by the parties. Prior to delivery of a definitive executed agreement, and without any liability to the other party, either party may (1) propose different terms from those summarized herein, (2) enter into negotiations with other parties and/or (3) unilaterally terminate all negotiations with the other party hereto.