

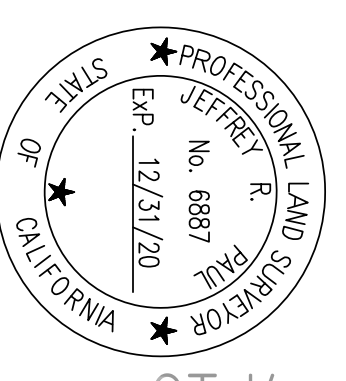
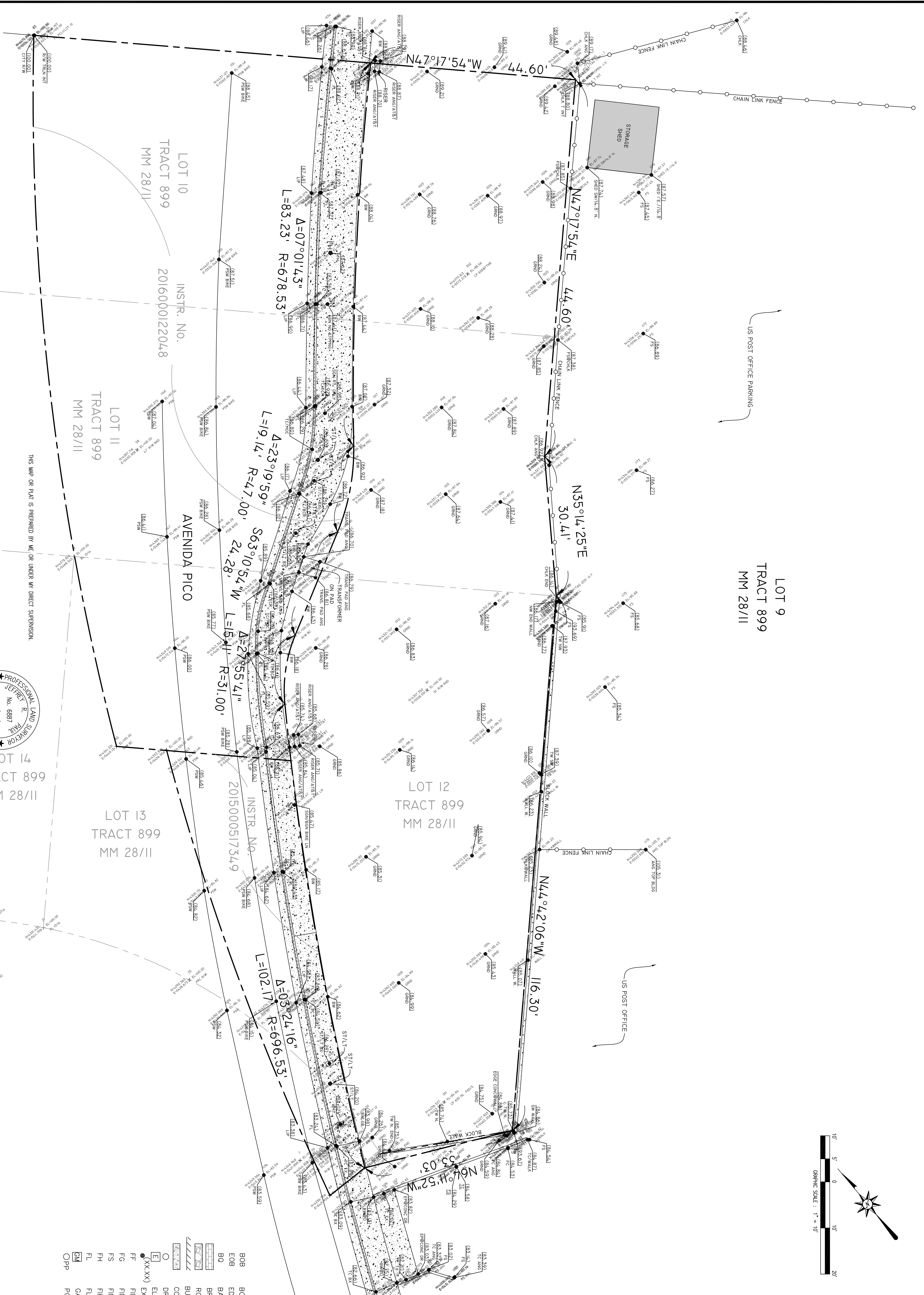
VICINITY MAP
N.T.S.

SITE ADDRESS:
524 E. AVENIDA PICO,
SAN CLEMENTE, CA 92672

LEGAL DESCRIPTION:
LOTS 10, 11, 12, 13, 4 TR 899, MM 28/11 - EXCEPTING THEREFROM
PER RECORD DOCUMENTS.

OCSBM DESCRIPTION:
DESCRIBED BY OCS 2003 - FOUND 3 3/4" OCS ALUMINUM
BENCHMARK DISK STAMPED "3Y-32-70", SET IN THE TOP OF
A 6 IN. BY 6 IN. CONCRETE POST MONUMENT IS LOCATED IN
THE SOUTHWESTERLY CORNER OF THE INTERSECTION
SOUTHWESTERLY CORNER OF THE INTERSECTION OF AVENIDA
PICO AND LOS MOLINOS. 31.5 FT. WESTERLY OF THE
CENTERLINE OF AVENIDA PICO. MONUMENT IS SET 0.3 FT.
ABOVE THE SIDEWALK IN A DIRT PLANTER.

BASIS OF BEARING:
XXXXXX
XXXXXX
XXXXXX



THIS MAP OR PLAT IS PREPARED BY ME OR UNDER MY DIRECT SUPERVISION
JEFFREY R. PAUL, D.L.S. 6887
LICENSE EXPIRES: 12/31/20

BY	REVISION	DESCRIPTION	APPROVED	DATE	SCALE: 1" = 10'	DESIGNED:	DRAWN:	CHECKED:	BENCHMARK	PLANS PREPARED BY:	TOPOGRAPHIC MAP
						PRIMA	JP		OCSBM: 3Y-32-70 ELEVATION = 70.502 ELEM. LEV. DED. 2003 NAND 89/D/AVUM	PETER and ASSOCIATES ENGINEERS & SURVEYORS, INC. WWW.PETERASSOC.COM 1519 CALLE VALE, SAN CLEMENTE, CA 92672 Tel: (949) 492-3735 Fax: (949) 492-1891	524 E. AVENIDA PICO, SAN CLEMENTE, CA 92672
											PREPARED FOR: BOO SUP CHAE/KYUNG SUK CHAE
											1 OF 1 SHEETS