

**92% LEASED** NEWLY COMPLETED GRANDE AT METROPARK  
FOUR BUILDINGS - 356 APARTMENTS



# 3 RONSON ROAD

METROPARK, NEW JERSEY  
THE GRANDE AT METROPARK

FOR LEASE **1,000 - 3,300 SF**

**SHANE WIERKS**  
swierks@jefferyrealty.com  
C: 908.581.7781  
O: 908.668.9600 x209



EXIT  
130 A-B

GARDEN STATE PARKWAY 209,088 VPD



← SOUTH  
→ NORTH



ROUTE 1  
62,744 VPD

PC  
RICHARD  
& SON  
APPLIANCES - ELECTRONICS - MATTRESSES

DSW  
HOME SENSE

Marshalls



43,500 SF  
OFFICE

RONSON RD. 2,225 VPD

88,426 SF  
OFFICE

112,449 SF  
OFFICE

113,022 SF  
OFFICE



85,336 SF  
OFFICE

HOBBY LOBBY  
Joe Canal's  
DISCOUNT Liquor Outlet

113,018 SF  
OFFICE

# 3 RONSON ROAD METROPARK, NEW JERSEY

# SITE INFORMATION

**GLA:** 11,110 SF GROUND FLOOR RETAIL

**VACANT:** 1,000 - 3,300 SF

**RENT:** CALL FOR QUOTE

**NNN:** EST. \$8.25 PSF

- NOTES:**
- Newly completed Grande at Metropark retail space (4 buildings -356 APTS)
  - Easy access to Routes 1, 9, 27, GSP
  - Shuttle to and from Metropark Train Station
  - Nearby both Menlo Park Mall and Woodbridge Center Mall
  - Venting capabilities for possible food use
  - +500k SF of office space within walking distance/30 second drivetime.

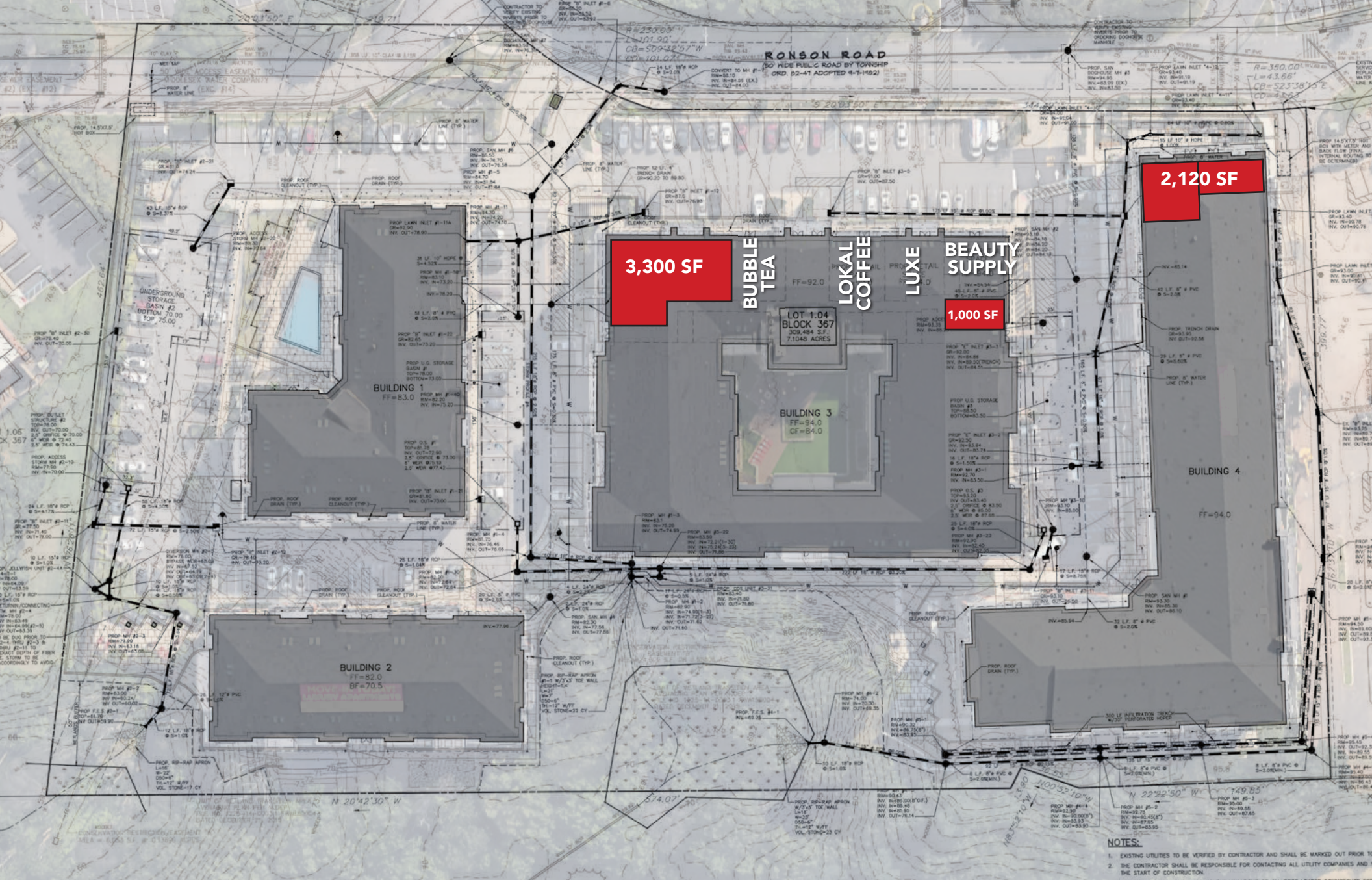


JEFFERY REALTY  
Retail Specialist

52 Millburn Ave. • Springfield, NJ 07081 • T: 908.668.9600 • F: 908.668.5225 • www.JefferyRealty.com

All information is from sources deemed reliable and is submitted subject to errors, omissions, change of price, terms, prior sales and withdrawals.





# 3 RONSON ROAD METROPARK, NEW JERSEY

# SITE PLAN

# HIGHLY VISIBLE PYLON SIGNAGE



# ELECTRONIC BILLBOARD FACING PARKWAY TRAFFIC



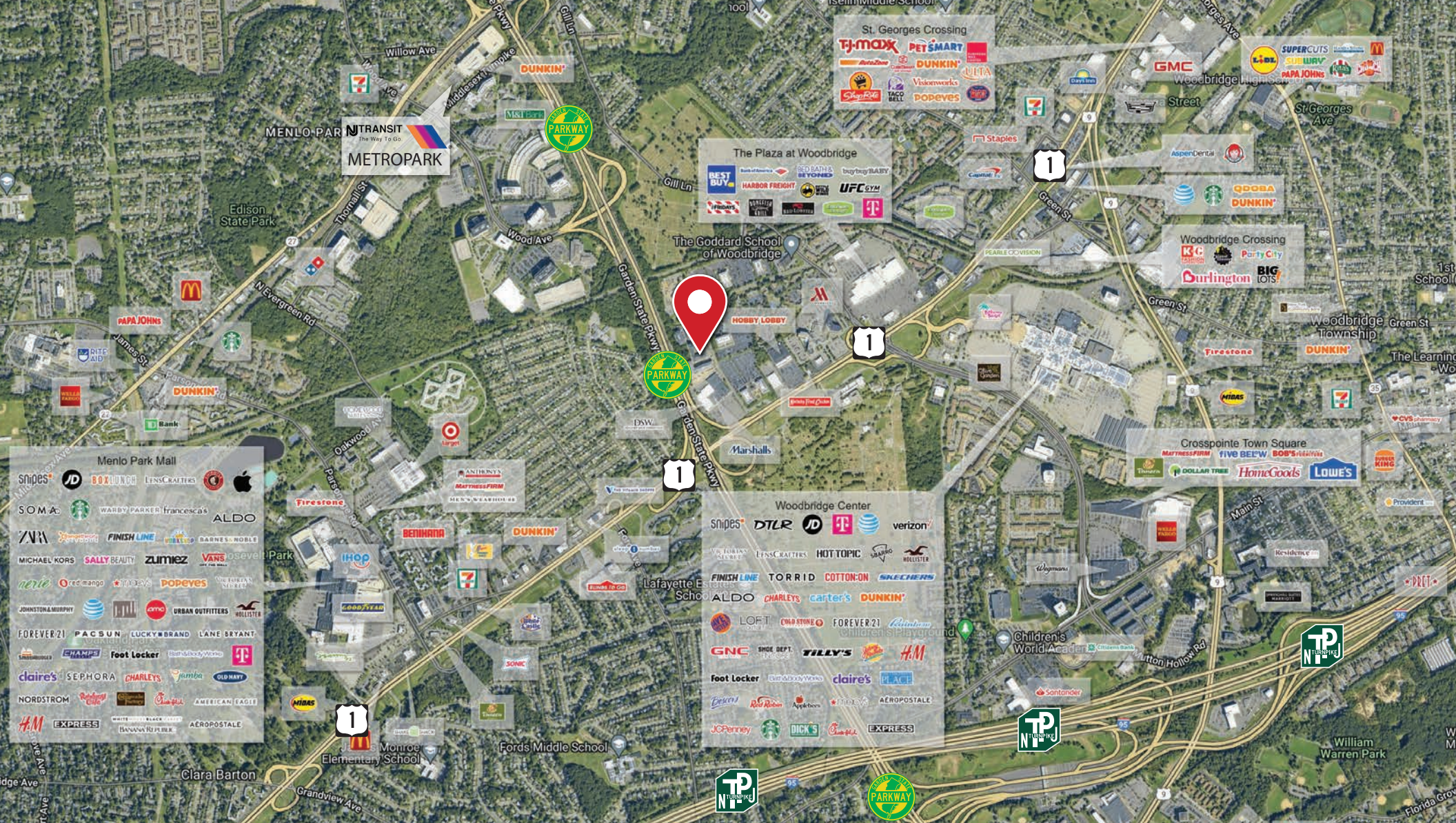
**3 RONSON ROAD** METROPARK, NEW JERSEY

**SITE PHOTOS**



# 3 RONSON ROAD METROPARK, NEW JERSEY

# SITE PHOTOS



**3 RONSON ROAD** METROPARK, NEW JERSEY

**MARKET AERIAL**