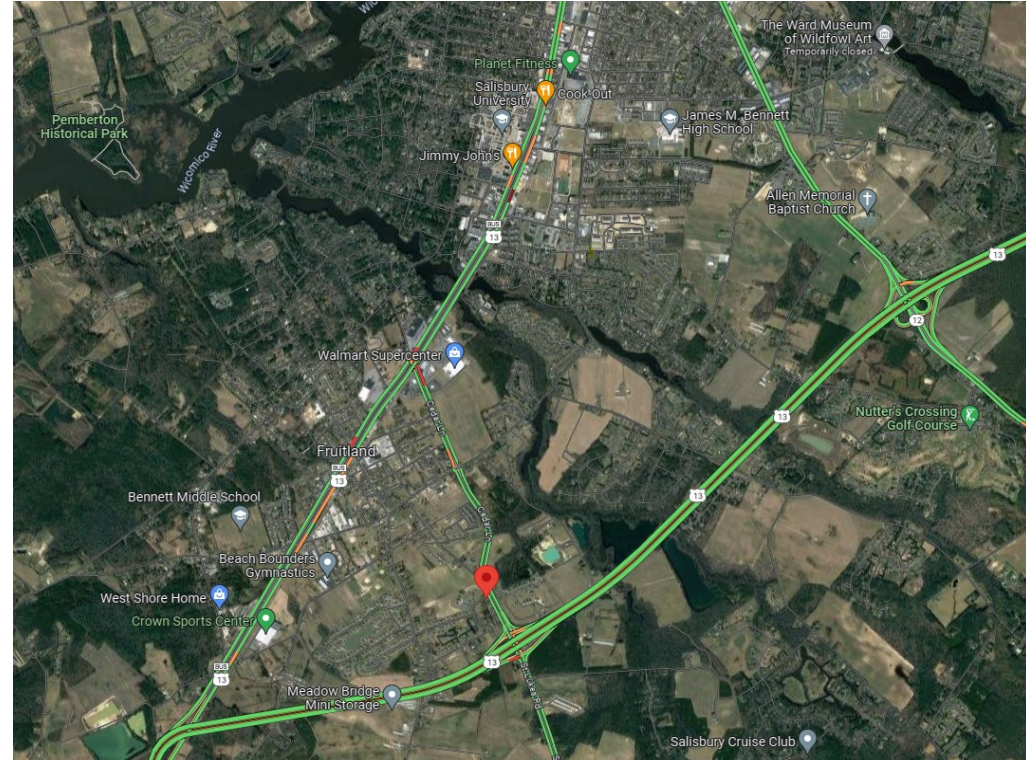
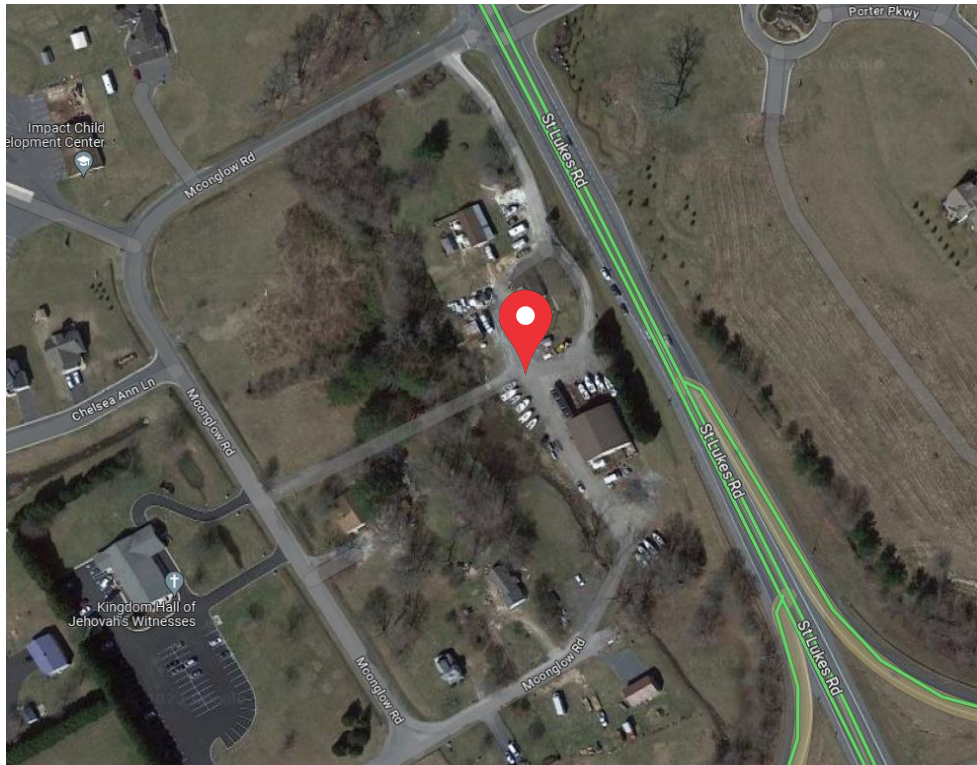


FOR SALE/LEASE

Land

225 Moonglow Rd | Fruitland, MD



Property Overview:

Land for sale or lease in Fruitland, MD. Located at the southwest corner of the Route 13 Bypass and St Lukes Road with great visibility and access to and from all areas of town. Large yard area and two warehouse buildings (3,600 SF w/ Office and 1,000 SF Storage).

Property Highlights:

- Great Visibility
- Convenient Location
- C4 - Commercial Zoning

**Price: \$350,000 Per Acre for Sale; or
\$30,000/Acre/Yr. Ground Lease; or
\$3,950 / Month Warehouse Lease**

Size: Up to 4.78 Acres



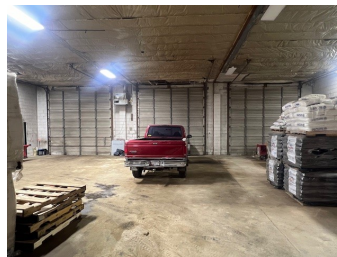
RINNIER
DEVELOPMENT COMPANY

218 East Main Street
Salisbury, MD 21801
www.rinnier.com

Blair Rinnier, CCIM, CPM
410.742.8151
brinnier@rinnier.com

FOR SALE/LEASE BUILDING

225 Moonglow Rd | Fruitland, MD



Building #1



FOR SALE/LEASE BUILDING

225 Moonglow Rd | Fruitland, MD



Building #2



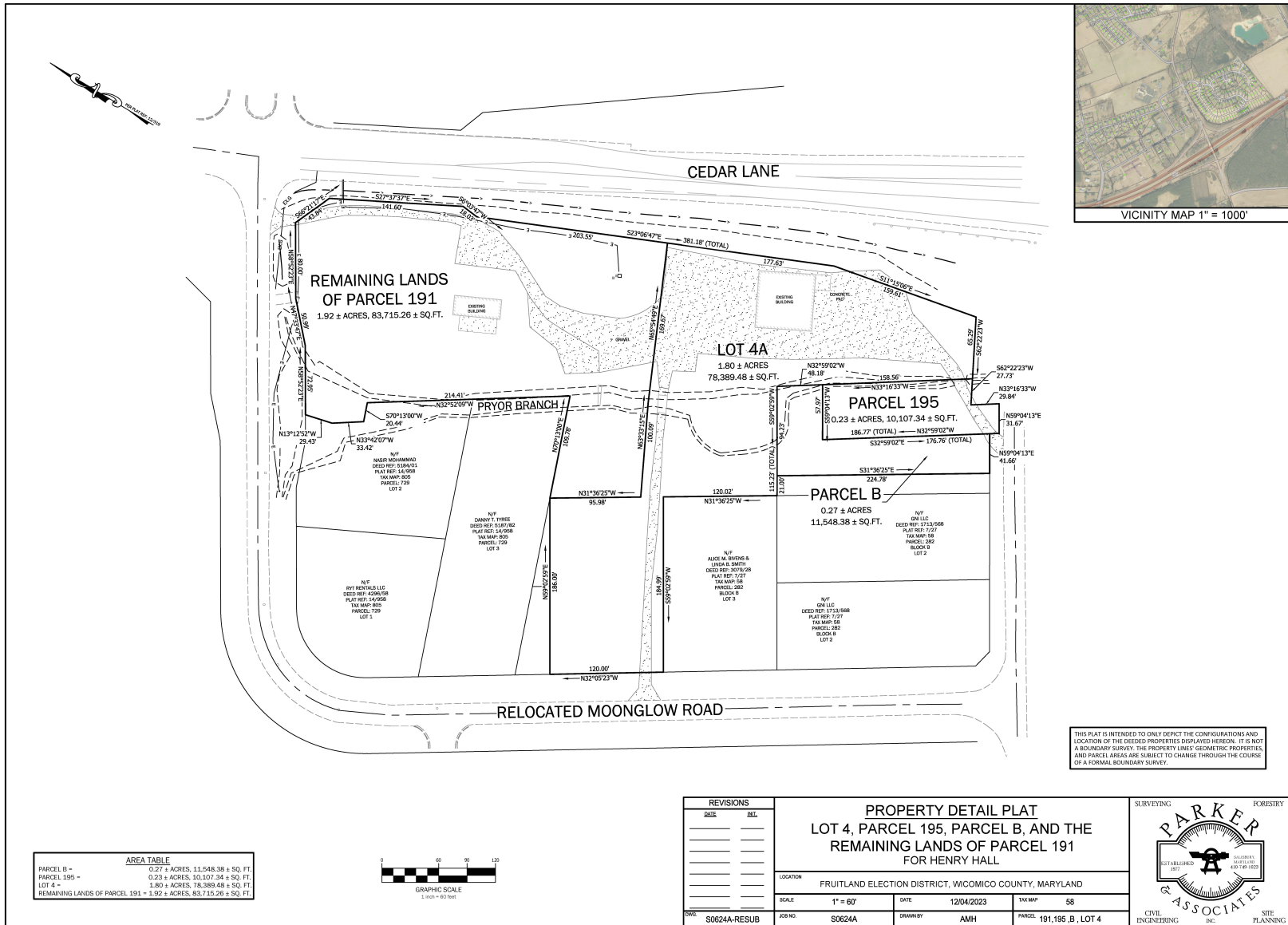
RINNIER
DEVELOPMENT COMPANY

218 East Main Street
Salisbury, MD 21801
www.rinnier.com

Blair Rinnier, CCIM, CPM
410.742.8151
brinnier@rinnier.com

SURVEY

225 Moonglow Rd | Fruitland, MD



RINNIER
DEVELOPMENT COMPANY

218 East Main Street
Salisbury, MD 21801
www.rinnier.com

Blair Rinnier, CCIM, CPM
410.742.8151
brinnier@rinnier.com

AERIAL

225 Moonglow Rd | Fruitland, MD



RINNIER
DEVELOPMENT COMPANY

218 East Main Street
Salisbury, MD 21801
www.rinnier.com

Blair Rinnier, CCIM, CPM
410.742.8151
brinnier@rinnier.com