

2212 GRAND COMMERCE DR.  
HOWELL, MICHIGAN

INDUSTRIAL FOR LEASE  
18,000 Square Feet Available



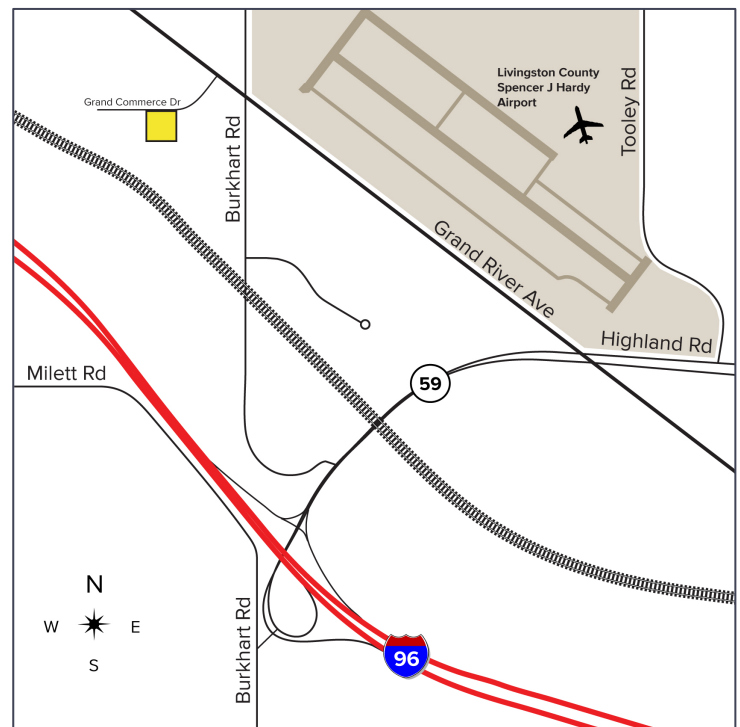
**SIGNATURE  
ASSOCIATES**  
KNOW SIGNATURE | KNOW RESULTS

## LIVINGSTON COMMERCE CENTER



### PROPERTY FEATURES

- 18,000 square feet available
- 24'-30' clear height
- (1) 12x14 grade level door, (1) truckwell
- ESFR fire suppression
- Lease Rate: \$8.25/sq.ft. NNN



For more information, please contact:

**JIM MONTGOMERY**  
(248) 359 0614  
jmontgomery@signatureassociates.com

**SIGNATURE ASSOCIATES**  
One Towne Square, Suite 1200  
Southfield, MI 48076  
www.signatureassociates.com

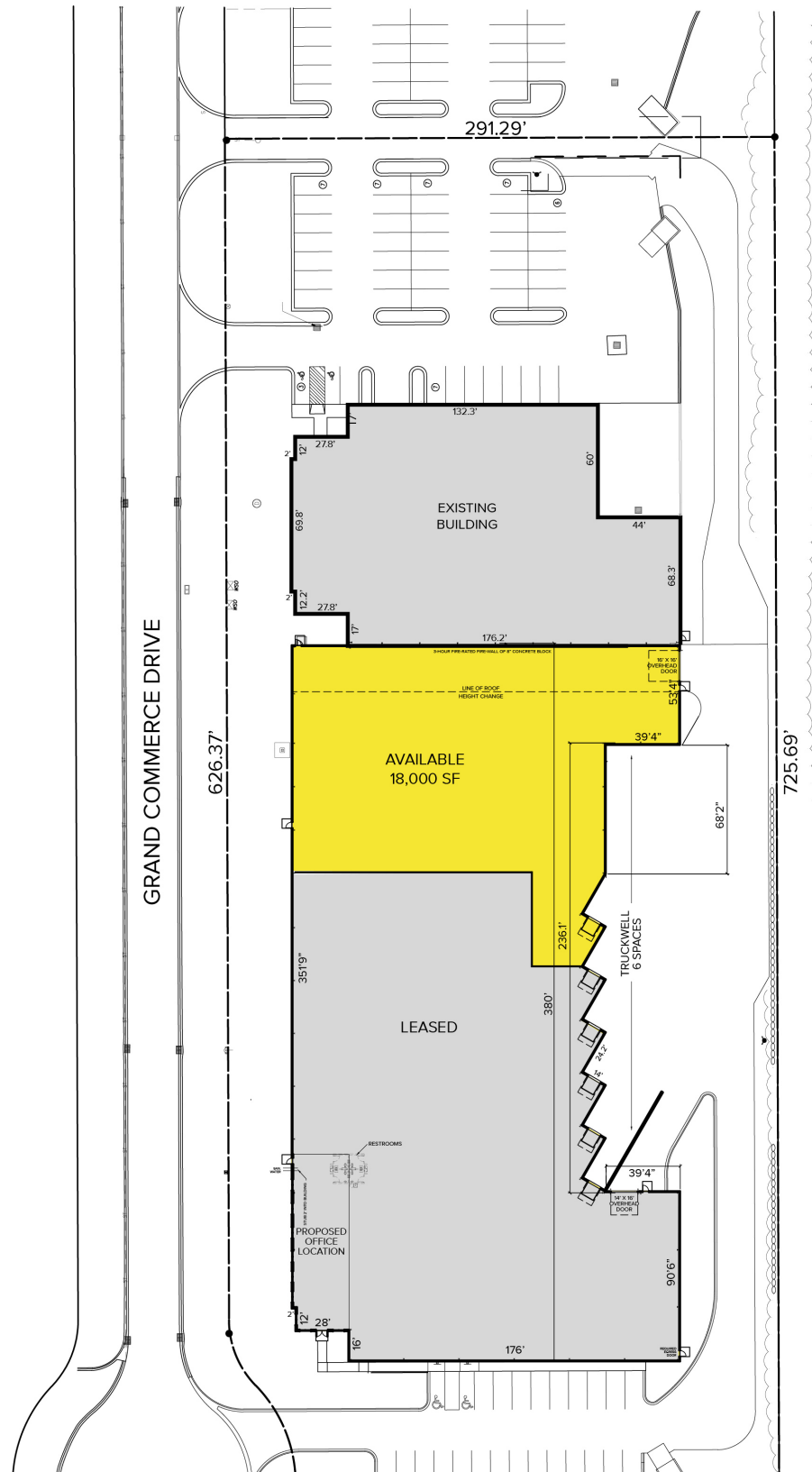
Information is subject to verification and no liability for errors or omissions is assumed. Price is subject to change and listing withdrawal.

# 2212 Grand Commerce Drive – Howell, Michigan

## Industrial For Lease

18,000  
Square Feet  
AVAILABLE

### Site Plan



For more information, please contact:

**JIM MONTGOMERY**  
(248) 359 0614  
jmontgomery@signatureassociates.com

**SIGNATURE ASSOCIATES**  
One Towne Square, Suite 1200  
Southfield, MI 48076  
www.signatureassociates.com

Information is subject to verification and no liability for errors or omissions is assumed. Price is subject to change and listing withdrawal.

# 2212 Grand Commerce Drive – Howell, Michigan

## Industrial For Lease

18,000  
Square Feet  
AVAILABLE

### Floor Plan



For more information, please contact:

**JIM MONTGOMERY**  
(248) 359 0614  
jmontgomery@signatureassociates.com

**SIGNATURE ASSOCIATES**  
One Towne Square, Suite 1200  
Southfield, MI 48076  
www.signatureassociates.com

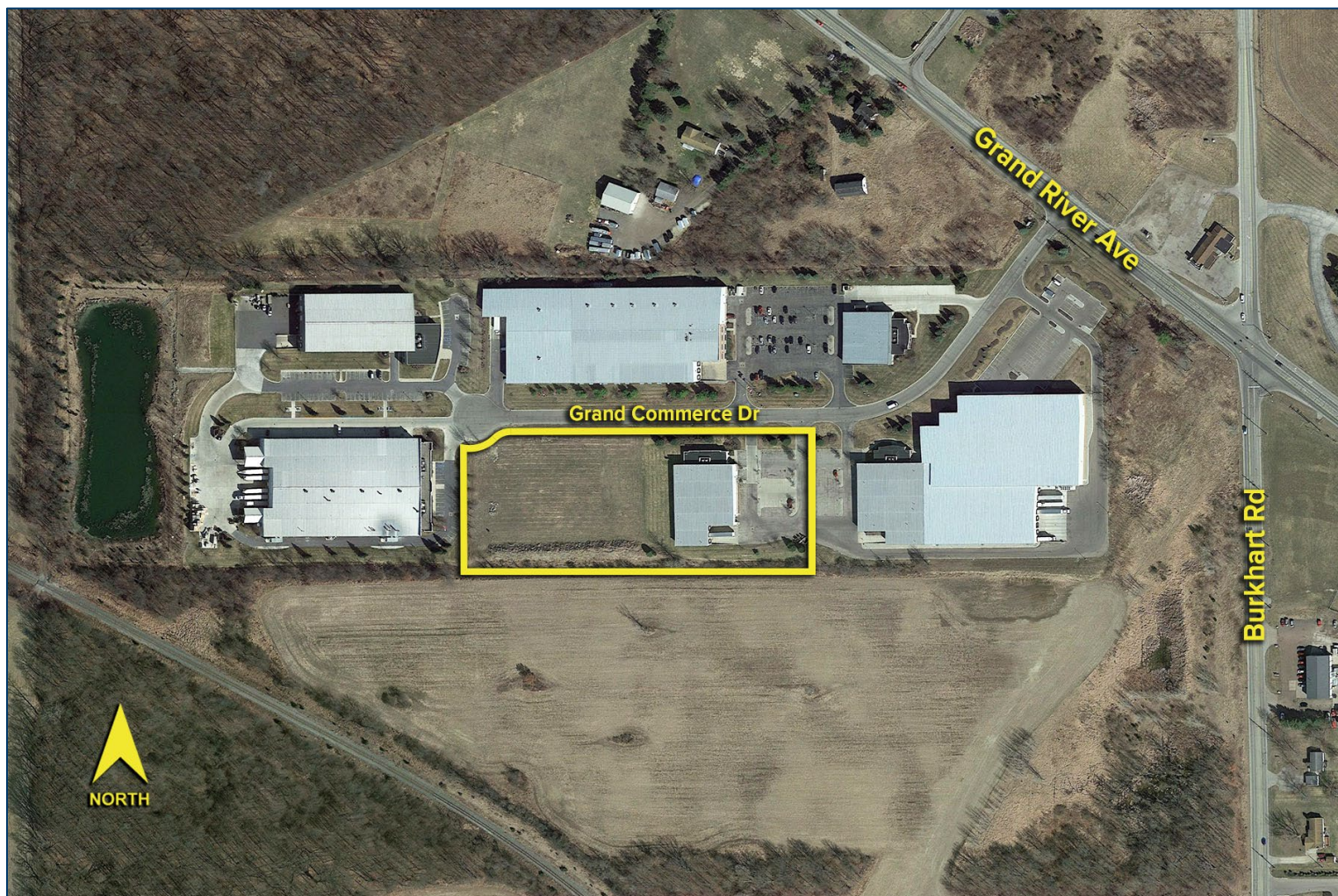


# 2212 Grand Commerce Drive – Howell, Michigan

## Industrial For Lease

18,000  
Square Feet  
AVAILABLE

Aerial



For more information, please contact:

**JIM MONTGOMERY**  
(248) 359 0614  
[jmontgomery@signatureassociates.com](mailto:jmontgomery@signatureassociates.com)

**SIGNATURE ASSOCIATES**  
One Towne Square, Suite 1200  
Southfield, MI 48076  
[www.signatureassociates.com](http://www.signatureassociates.com)

Information is subject to verification and no liability for errors or omissions is assumed. Price is subject to change and listing withdrawal.