

# INDUSTRIAL LAND FOR LEASE

*Just East of USC Campus*

LAND SQ.FT.: 5,500±



**230 W 33RD STREET, LOS ANGELES, CA 90007**

- Secure, gated and paved lot available
- Ideal for vehicle/truck/trailer parking, contractor's yard, etc.
- Located on the south side of 33rd St just west of Hill St
- 2 blocks east of the Harbor (110) Freeway — 4 blocks east of USC campus
- Just minutes south of Downtown Los Angeles
- Zoned LA M1 — Assessor's parcel number 5122-008-011
- Includes various structures which owner will demolish or credit tenant for demolition (call broker for details)
- Lease rental: \$3,850 per month (\$0.70 per sq.ft. gross)

*For More Information, Please Contact:*

**SION KHAKSHOUR**

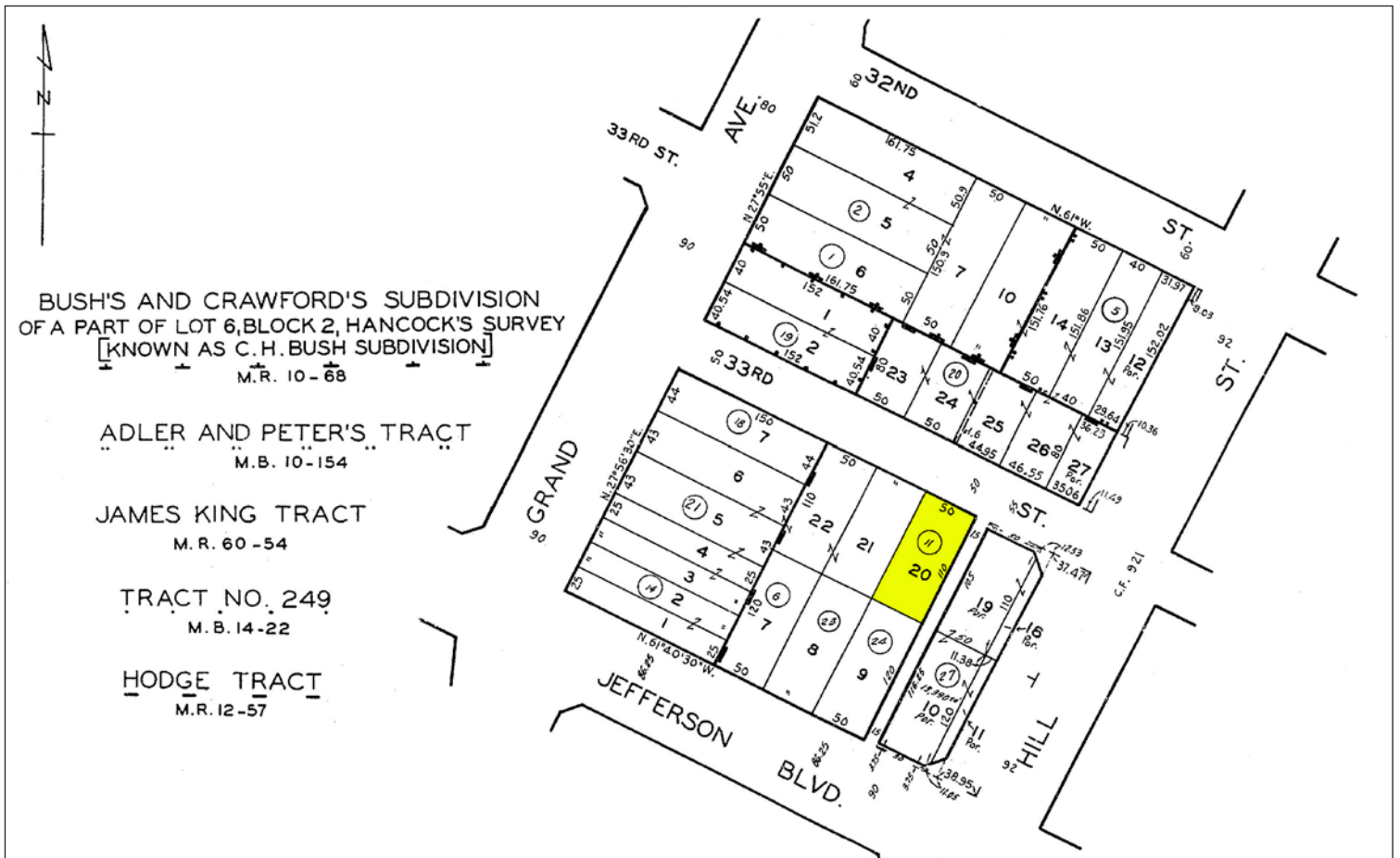
**213-210-7492**

**sion@majorproperties.com**

LIC. 00697373

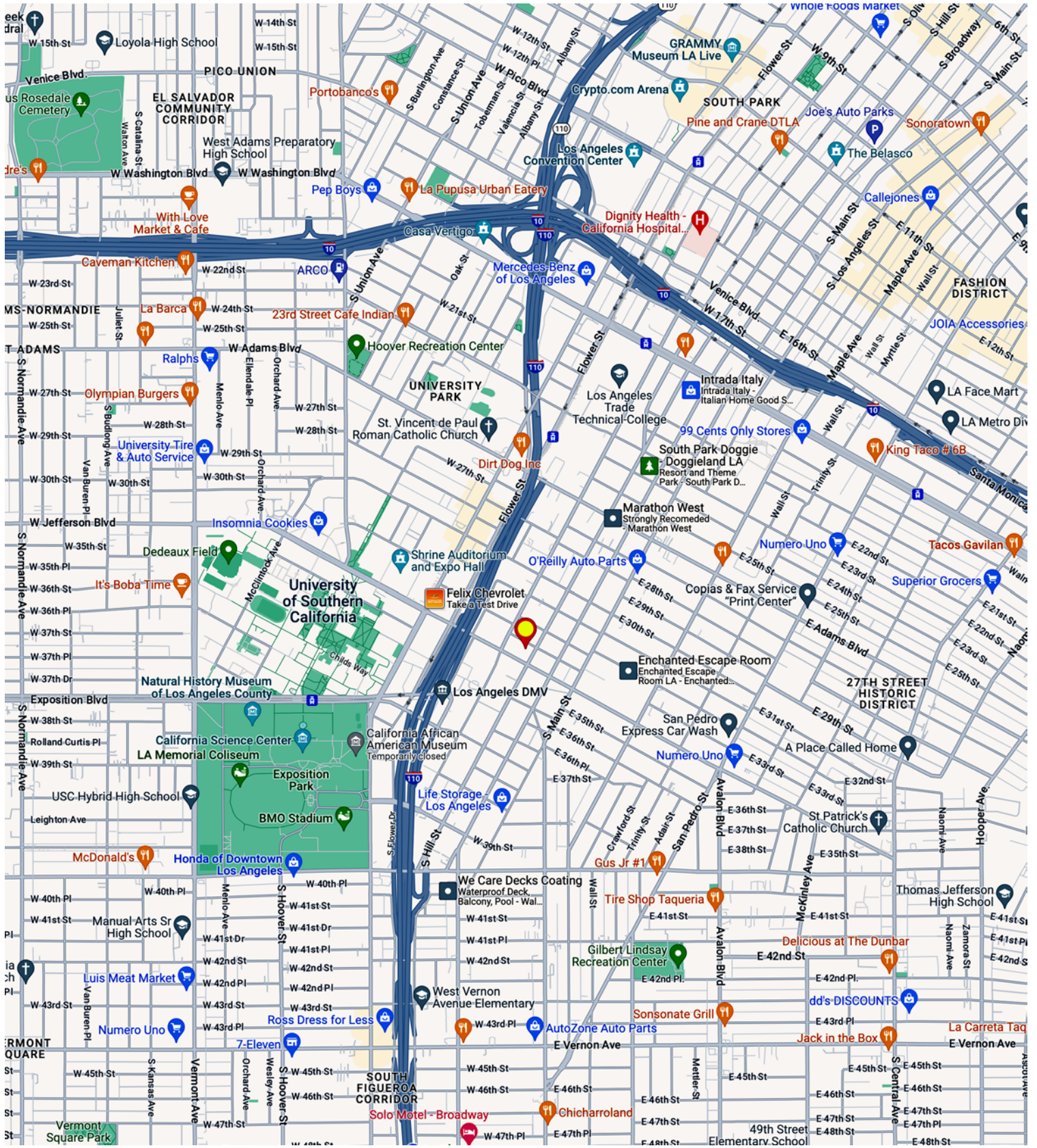
The information contained herein is furnished by sources we deem reliable, but for which we assume no liability. It is given in confidence and with the understanding that all negotiations pertaining to the property be handled through the listing office. All measurements are approximate.

# INDUSTRIAL LAND FOR LEASE





# INDUSTRIAL LAND FOR LEASE



**MAJOR PROPERTIES**  
REAL ESTATE  
Commercial • Industrial • Residential

1200 West Olympic Boulevard, Los Angeles, California 90015  
213.747.4151 • fax 213.749.7972 • [www.majorproperties.com](http://www.majorproperties.com)

