

7610

PENNSYLVANIA AVE.

FORESTVILLE, MD 20747



OFFICE & MEDICAL SPACE FOR LEASE

1,200 SF OF AVAILABLE SPACE

HIGHLIGHTS

- Space available in strategically located office building
- 69 parking spaces available [parking ratio of 3.01/1,000 SF]
- 7 rooms, 3 private offices, reception area and staff room
- Located half a mile from I-495
- Minutes from restaurants and shops
 - + Penn Mar Shopping center
 - + Forestville Plaza Shopping Center
 - + Centre at Forestville Mall
- 10 miles from Downtown Washington D.C.



301-337-4700

www.scheerpartners.com

 **Scheer Partners**
A Reputation for Results

AVAILABLE SPACE

UNIT

#307

SQUARE FOOTAGE

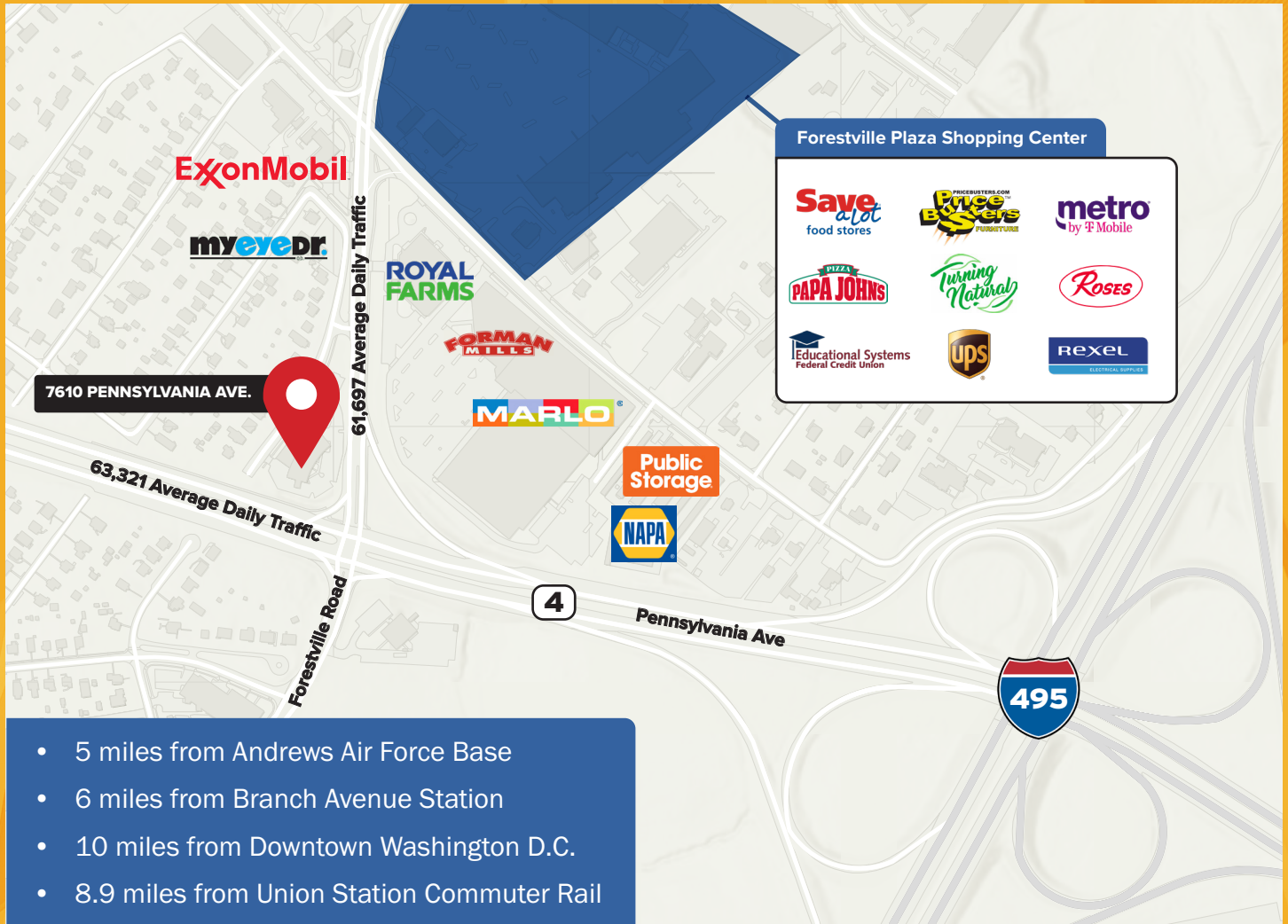
1,200

RATE

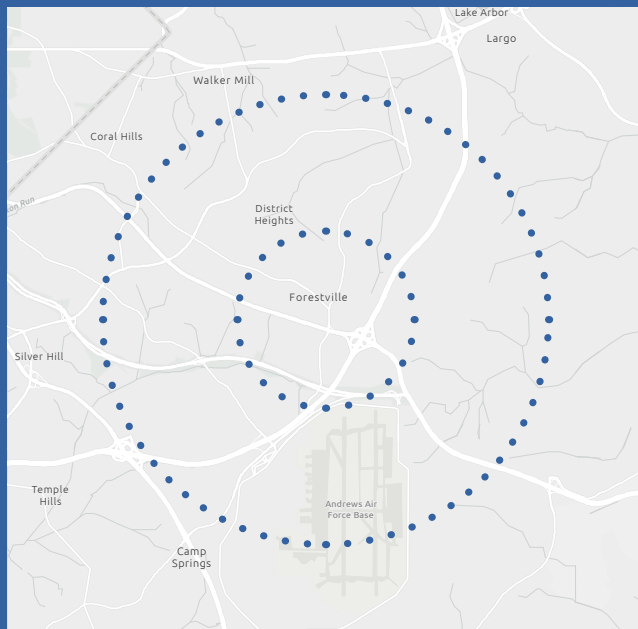
\$22.00/FS



LOCATION MAP



- 5 miles from Andrews Air Force Base
- 6 miles from Branch Avenue Station
- 10 miles from Downtown Washington D.C.
- 8.9 miles from Union Station Commuter Rail



DEMOGRAPHICS

1 Mile

POPULATION
10,796

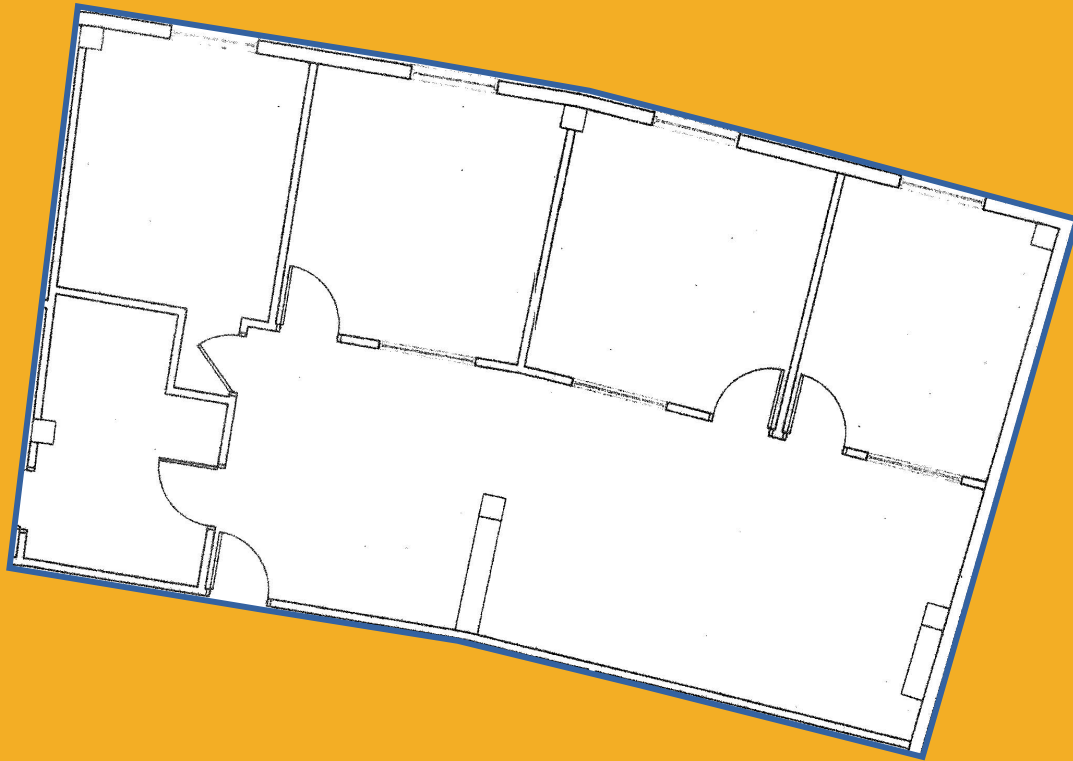
MEDIAN HH
INCOME
\$65,181

3 Miles

POPULATION
84,686

MEDIAN HH
INCOME
\$70,388

FLOOR PLAN



Suite 307

1,200 SF

For Leasing Opportunities:

David Edgerley

Senior Vice President

301.943.9762

dedgerley@scheerpartners.com

Aaron Gambini

Senior Vice President

703.472.3737

agambini@scheerpartners.com

301.337.4700

www.scheerpartners.com

15245 Shady Grove Rd, Suite 210 North, Rockville, MD 20850

 **Scheer Partners**
A Reputation for Results